



SHOP INDOOR GOLF
— America's Indoor Golf Store —



SCAN ME

SIG12 FLOORING

Assembly Instructions & User Manual



www.shopindoorgolf.com

THANK YOU!

Thank you for your purchase of the SIG12 PRO simulator flooring kit! In this guide, you will find everything you need to complete the assembly of the kit and a few helpful tips to help you make the best use of it.

TABLE OF CONTENT

Specifications.....	1
Safety Instructions.....	2
What's Included.....	2
Overview of SIG12 Simulator Flooring.....	3
Assembly Instructions of SIG12 Flooring.....	4
SIG12 Simulator Flooring Care and Use.....	10

Specifications

Product Name:	SIG12 PRO Simulator flooring
Size:	Large
Material:	Hard Plastic Flooring Panels
Capacity:	Simulated Golfing and Putting
Weight:	455lbs
Durability:	2 ¼" Polyurethane Plastic
Color:	Green
Dimensions:	13'6"W x 15'6"D x 2.375"H

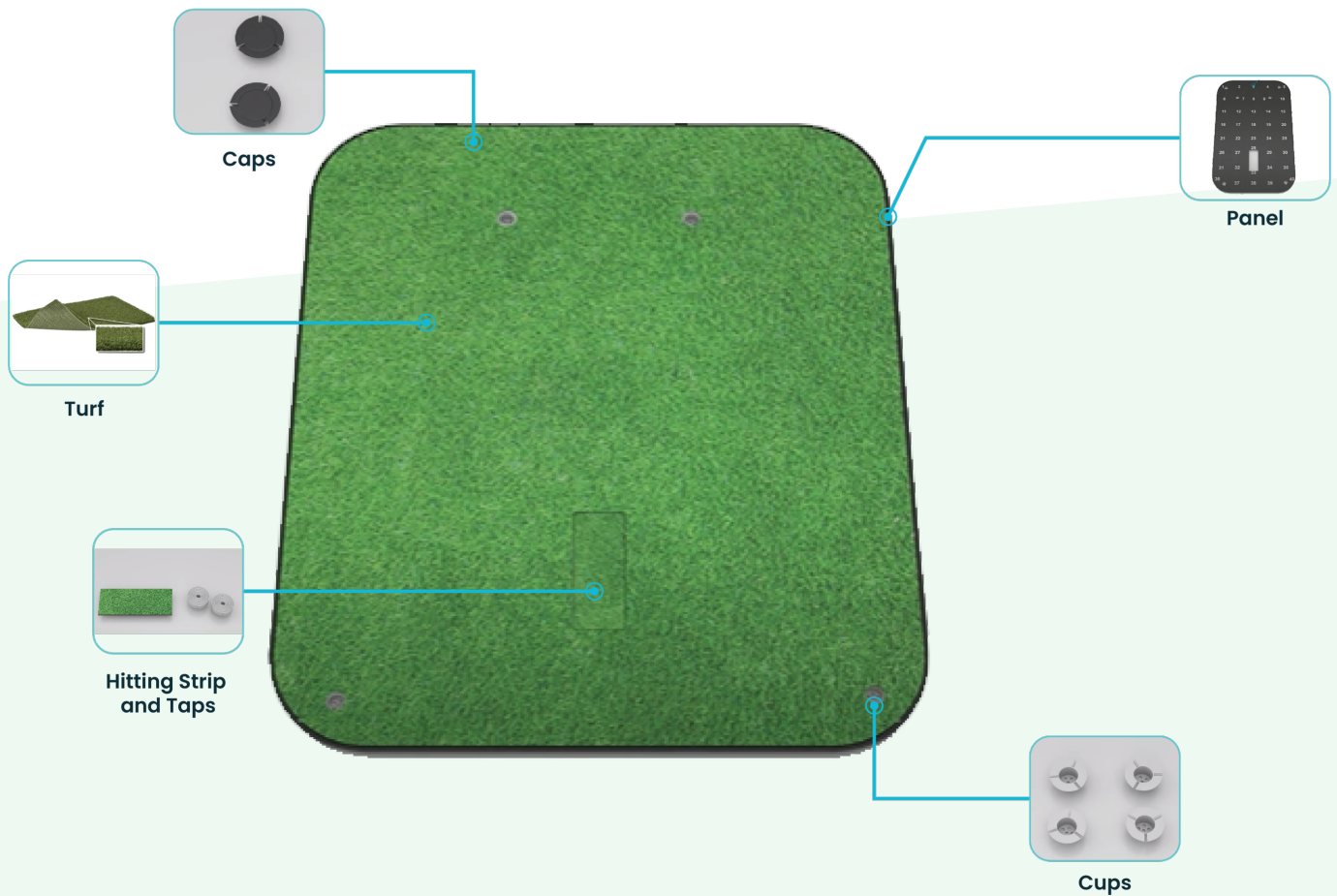
Safety Instructions

- Make sure to install the SIG12 pro simulator floor at the safe distance from the hazardous place.
- Avoid wearing high heels or walking aids on the simulator floor.
- Make sure the setup is far from the gas, electric heater, fireplace, or any other similar source of heat otherwise, it can cause serious injury.
- Take proper safety precautions when moving or arranging the assembly panels, use at least two people.
- When not in use, store the turf neatly in a cool or dry location, protected from sunlight.
- Please make sure to keep children, pets, and spectators away from the golf simulator flooring.
- Make sure to protect the area between the screen and the hitting mat from golf ball strikes.

What's Included

- 56-flooring panels that include 4 corner pieces, 22 border pieces, 26 regular middle pieces, 2 pieces designed to go around the mat, and 2 middle pieces for a cup.
- 4-putting cups
- 2-caps for corner pieces
- 1-hitting strip
- Putting turf designed to fit the simulator flooring
- 1-double sided carpet tape

Overview of SIG12 Simulator Flooring



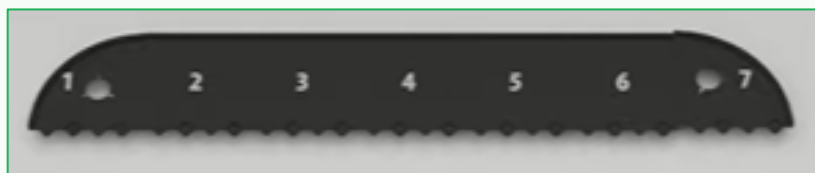
Assembly Instructions Of SIG12 Flooring

Step 1: Assemble The Row Of Panels

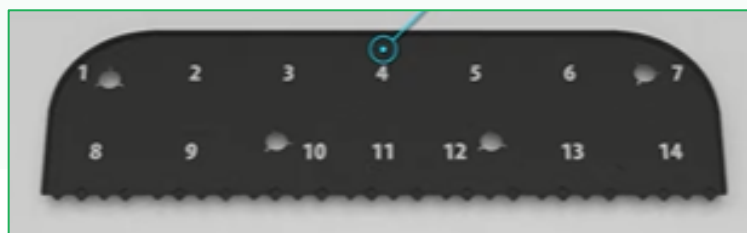
1. First, separate the panels and lay everything out by likeness.



2. Start assembling 1st row, numbered 1-7 with the back row that goes against the wall.



3. Now assemble the 2nd row of panels numbered 8-14 and connect them to row 1.

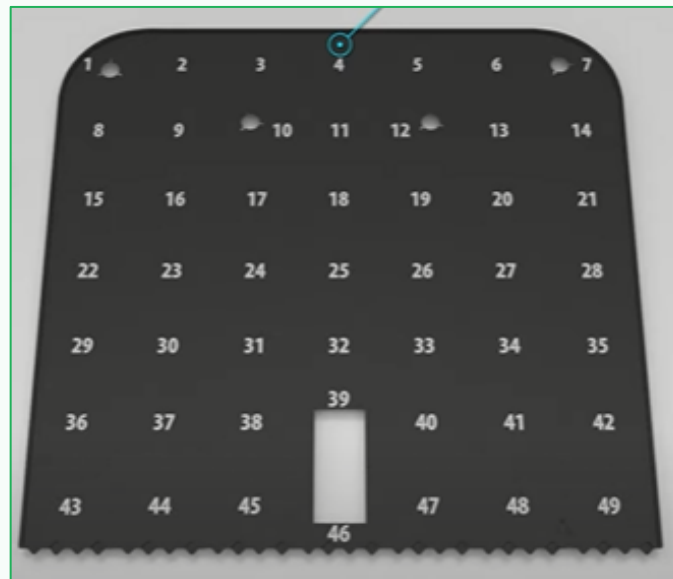


SIG12 Flooring (Assembly Instructions and User Manual)

4. Continue the process of connecting the rows until row 6 labeled 36-42.

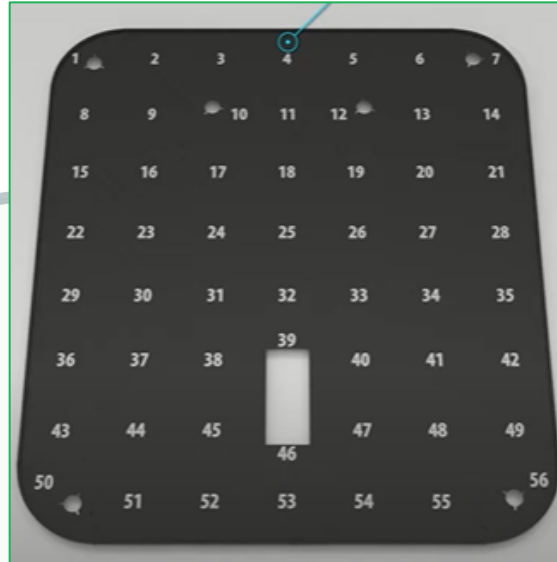


5. Assemble rows 6 and 7 and attach them in the same manner as the rest.



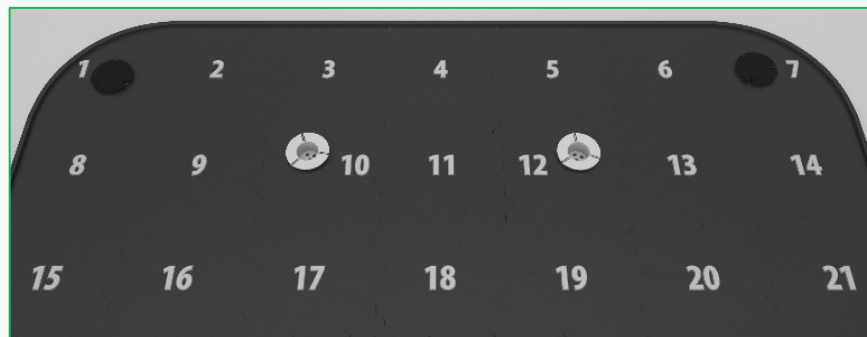
SIG12 Flooring (Assembly Instructions and User Manual)

6. Finally, put together row 8 and attach it to the rest of the simulator flooring.



Step 2: Insert the cap and Cups

- Insert the caps provided to cover the holes on the corner pieces.



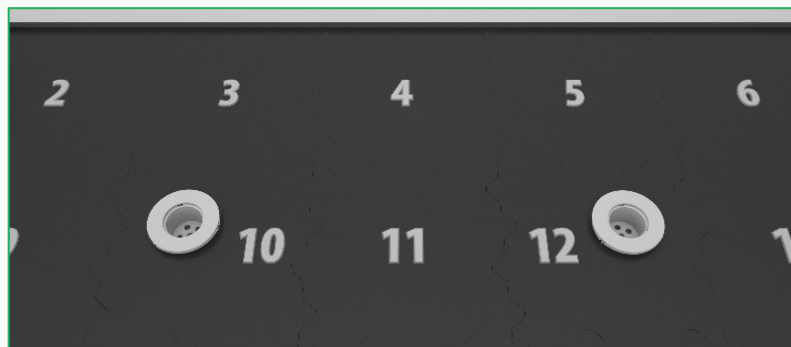
SIG12 Flooring (Assembly Instructions and User Manual)

- Take 4 cups and insert them to their designed locations, in panels 9, 10, 43, and 48.



Step 3: Place Tape on The Ring of The Cups

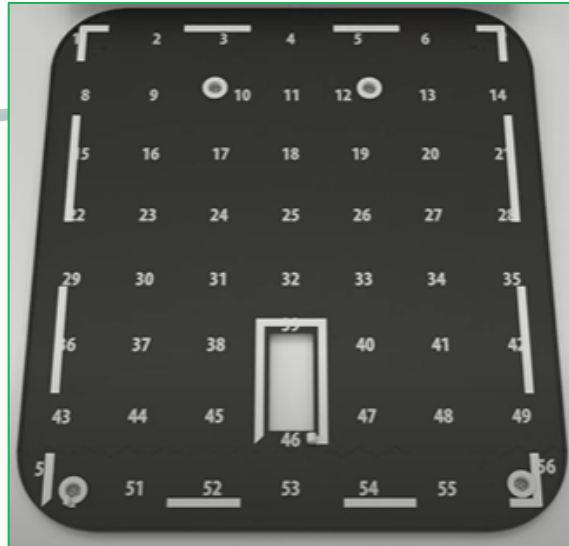
Give the cups a slight twist to lock them into place, then use the white circle and place that around the cups.



SIG12 Flooring (Assembly Instructions and User Manual)

Step 4: Place Tape Around the Border and Hitting Strip

Use the double-sided carpet tape around the mat, the cups, the corners, and anywhere for some extra support.



Step 5: Place the Turf Down

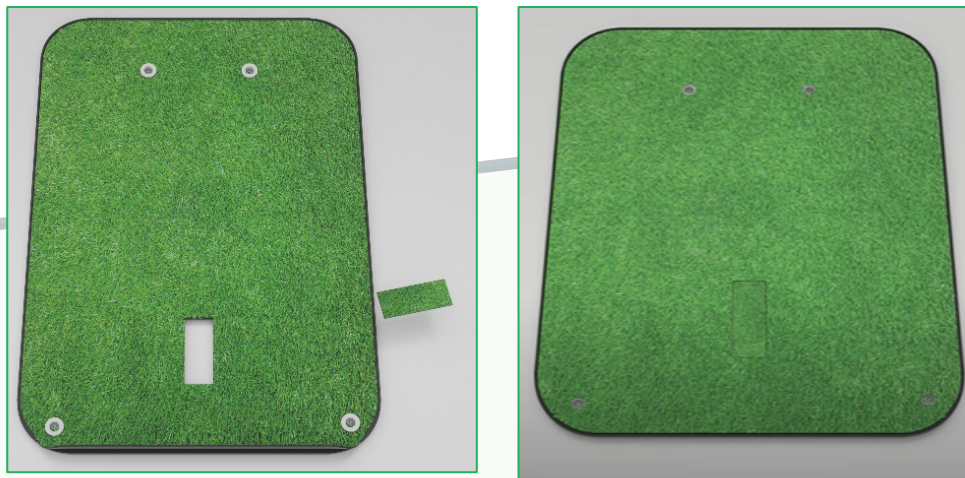
Lay out the carpet matching the putting cups with the designed cutouts for them.



SIG12 Flooring (Assembly Instructions and User Manual)

Step 6: Insert Hitting Strip

Lay the hitting strip into its designated location.



Note: This may be a snug fit.

Step 7: Place SIG12 Enclosure on The Top of The Flo

Put the SIG12 Enclosure to the back of the frame against the corner piece of the simulator flooring and enjoy a new indoor golf experience.



SIG12 Simulator Flooring Care And Use

- The golf turf should be pressure washed once per year to remove any sand or dirt that has accumulated in the nylon fibers.
- Never apply any cleaning or shining agents to the turf.
- Make sure to clean the panels with a soft, damp cloth.
- To keep the green looking new for years never crease the turf.
- If the turf will not be in use for an extended period, roll it loosely with the green side out and store it and accessory pieces indoors.
- Vacuum it weekly or after each use to remove a buildup of dust on it.
- Do not use a beater brush on the turf, it can cause damage.
- Make sure to place the SIG12 simulator flooring set up in a room or space that is larger than the minimum space.

We Welcome Your Feedback!

Please feel free to contact us if you have any questions or comments about using your new products. We can be reached on our website, via email, or by giving us a call. Please don't hesitate to let us know if there is anything we can do to make your purchase a great value!



SHOP INDOOR GOLF

— America's Indoor Golf Store —

Visit:

<https://youtu.be/u5IbXUqZ-rs> or

SCAN THE QR CODE TO VIEW A VIDEO ON HOW TO ASSEMBLE THE SIG12 Flooring

