

ERNESTSPORTS®
IMPROVING GOLF PERFORMANCE

ES15



» **ES15 User Manual**

TABLE OF CONTENTS

INTRODUCTION	4-5
Description	4
Specification	5
PACKAGE CONTENTS	6
Standard And Optional Parts	6
ASSEMBLY OF THE ES15	7-9
Attach Stabilizing Feet	7
Installation of Battery	8
Optional Power Source	9
Low Battery Prompt	9
REMOTE CONTROL KEY FOB	10
Uses of the Key Fob	11
INSTALLATION OF THE ES15	12-14

STARTING A RANGE SESSION	15-16
Data Provided	16
GETTING THE ES15 APP	17
ES15 APP	18-29
Bluetooth Connection	19
Range Session	20-21
Viewing Options	22-24
Club & Loft Selection	25
Default Information	26
Session Logs	27
Club Averages	28
Skills Challenge	29
WARRANTY	30

INTRODUCTION

Description

The ES15 Range Launch Monitor is a Doppler radar bay divider specifically designed for driving ranges and hitting bays. This launch monitor displays distance, club speed, smash factor, spin rate and ball speed of each shot hit on dual LCDs. (**NOTE:** launch angle is displayed on the free app). These statistics remain on the screens until the next shot is hit.

This versatile device may be installed on grass, artificial turf, hitting mats, and wooden or concrete flooring. Each ES15 features Bluetooth which allows connection of the golfer's smart device to the ES15. The free ES15 app records and stores each shot hit during a range session, allowing the golfer to review his progress.

The ES15 Range is powered by a rechargeable battery which provides up to 140 hours of use. There is an automatic shut off feature which powers the unit off after 8 minutes of idle time. This feature helps to save the battery life.

Specifications

FRONT



Stabilizing Foot

Ball Placement

Stabilizing Foot

Dimensions: Height: 30" Length: 48" Weight: 40 lbs.

BACK



Stabilizing Foot

Stabilizing Foot

PACKAGE CONTENTS

Standard Parts

The ES15 Range is packaged in its own box to prevent damage during shipping.

In addition to the ES15, every order includes:

1. Two (2) stabilizing feet
2. Two (2) bolts
3. One (1) battery
4. One (1) battery charger
5. One (1) battery panel door
6. Assembly Instructions

Optional Parts

1. Remote Control Key Fob
2. Stabilizing Weights
3. Customized Panels
4. Waterproof Cover
5. Optional Power Source

Remove contents of both boxes and locate packing slips. Make sure all parts are accounted for.

NOTE: IF ANY PART IS MISSING FROM YOUR ORDER, OR IF CONTENTS ARE DAMAGED, CONTACT ERNEST SPORTS AT 855-354-4653

ASSEMBLY OF THE ES15

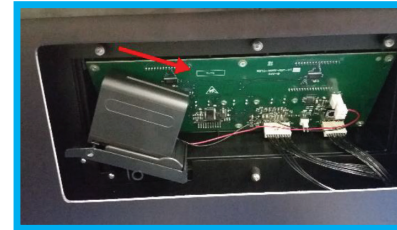
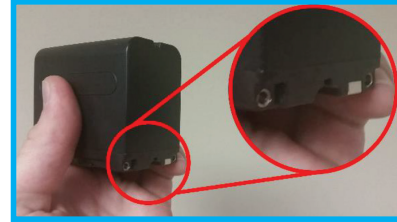
Attach Stabilizing Feet

1. Locate the two (2) feet and two (2) bolts from smaller box
2. Working on a flat surface, stand the ES15 on its end.
WARNING! DO NOT LAY THE ES15 ON THE LCD DISPLAY!
THIS COULD DAMAGE THE DISPLAY AND ELECTRONICS.
3. Match the center hole in the foot to the hole on the bottom of the ES15.
4. Insert the bolt in the **center** hole in the foot, then insert the bolt into one of the holes on the bottom of the unit.
5. Tighten the bolt by hand until it is snug, then use a 9/16 socket wrench to secure the bolt. **CAUTION: DO NOT OVERTIGHTEN THE BOLT. DAMAGE TO THE FOOT MAY OCCUR.**
6. Repeat steps 3 – 5 to attach the second foot.
7. Place unit in an upright position and check to see if feet are secure and unit is level.



Installation of Battery

1. Locate the **metal contacts** on the end of the battery.
2. Insert the battery with the contacts on the right into the battery tray.
3. Slide the battery into place until the battery is secure.
4. Insert the battery panel by placing the top of the panel in first (the latch is at the bottom).
5. Snap the panel in place.
6. Press the **power button** on the front of the unit to be sure battery has been inserted properly.





Battery



Battery charger

Low Battery Prompt

“Battery” in the lower corner of the display indicates when the battery is low and should be replaced. To remove battery panel door, push the latch up and lift the door up and out.
Remove battery and charge, then replace.

Optional Power Source

The ES15 can be configured to operate from electrical outlet. This is a special order feature. Contact Ernest Sports at 855-354-4653 for more information.

REMOTE CONTROL KEY FOB

An optional feature of the ES15 is the remote control key fob that allows you to enable or disable power to the unit remotely. The power button on the ES15 is still necessary to activate the unit.

The power button on the unit will not work until the key fob “A” button is pressed. The ES15 may be powered off by either the remote control key fob or the power button on the unit.

However, when installing or replacing the battery, the remote control key fob **MUST BE USED FIRST** to enable power for ES15.

PLEASE NOTE: IF YOU HAVE PURCHASED A **REMOTE CONTROL KEY FOB** WITH YOUR ES15, YOU MUST PRESS THE “A” BUTTON ON THE FOB TO ENGAGE THE ELECTRONICS **IN THE UNIT**, THEN PRESS THE POWER BUTTON **ON THE FRONT OF THE ES15**. ALWAYS FOLLOW THIS PROCEDURE WHEN INSERTING OR CHANGING THE BATTERY.

“A” BUTTON



Uses of the Remote Control Key Fob

Although an optional feature, the remote control key fob enhances the use of the ES15 in a number of ways:

1. The range of the remote control allows the manager to enable or disable the ES15 without having to physically touch the unit. If an instructor is working with a student and another golfer finishes his session on an adjacent ES15, the instructor can quickly check to see if the unit was powered off by pressing the “B” button on the key fob. This will save the life of the battery.
2. If a facility chooses to add a fee for the use of the ES15, the range manager will have the ability to enable or disable the unit remotely.
3. If a time limit is placed on the use of the ES15, the range manager is able to remotely enable or disable at the appropriate time.
4. The remote control key fob provides the facility manager the means to control the use of the ES15 easily and with little effort.

INSTALLATION OF THE ES15

The ES15 Range launch monitor may be used in a variety of settings: natural grass, artificial turf, hitting mats, concrete or wooden floors. The unit may be used in both indoor and outdoor settings, under covered bays or open ranges.

Grass

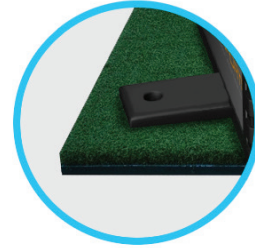
If your Club's Driving Range has a grass surface, simply place the ES15 on the hitting area. When deep divots occur, simply pick up the unit and adjust its position.

OPTION: Ernest Sports offers additional ten (10) pound weights that may be attached to the stabilizing feet. The weights have a pin that inserts in the exposed hole of the foot. If your area experiences strong winds, the added ten (10) to forty (40) pounds available would insure the stability of your ES15.



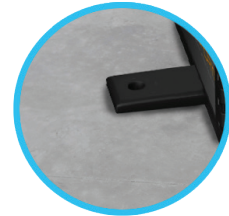
Artificial Turf

The ES15 may also be used on a hitting mat or artificial turf. The optional weights that affix to the feet of the unit can be used if extra stability is needed.



Wooden Floors or Cement

For permanent installation of the ES15, simply secure the unit onto the wooden floor or cement by attaching permanent anchors into the holes found on each stabilizing foot.



Waterproof Cover

For extra protection, Ernest Sports offers an optional waterproof cover. This cover, like the ES15 panels, may have the Ernest logo or be customized with special club branding.

Custom Panels

Enhance your facility's look through uniquely designed panels. Rent panels for local ads, promote events.



STARTING A RANGE SESSION

Start your session

1. Press the power button on
2. Use the arrow buttons to select the club you wish to use
3. Position your ball 12"-14" across from the orange circle, found on the lower part of the front panel
4. Begin your session

<i>CODE</i>	<i>CLUB</i>	<i>CODE</i>	<i>CLUB</i>
D WD	Driver	4 IR	4 Iron
3 WD	3 Wood	5 IR	5 Iron
5 WD	5 Wood	6 IR	6 Iron
7 WD	7 Wood	7 IR	7 Iron
2 HYB	2 Hybrid	8 IR	8 Iron
3 HYB	3 Hybrid	9 IR	9 Iron
4 HYB	4 Hybrid	P WDG	Pitching Wedge
5 HYB	5 Hybrid	G WDG	Gap Wedge
2 IR	2 Iron	S WDG	Sand Wedge
3 IR	3 Iron	L WDG	Lob Wedge

NOTE:

Each ES15 software is pre-programmed with the consumers altitude location 0 – 9,000 ft., choice of unit of measure (yds or meters) and 8 minutes of idle time before automatic shutoff.

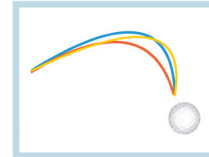
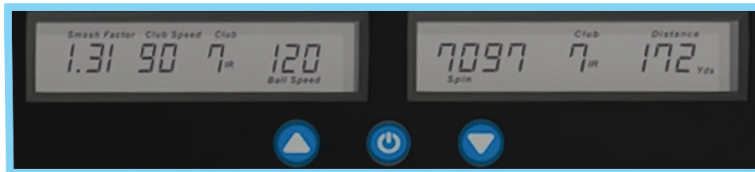
Data Provided

After each shot is hit, five data points will be displayed on the dual LCDs. The five statistics are:

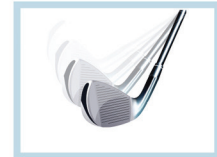
1. Distance
2. Ball Speed
3. Spin Rate
4. Smash Factor
5. Club Speed

These statistics will remain displayed until the next shot is taken.

Dual LCD



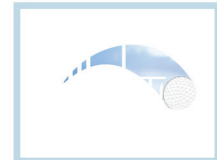
Distance



Club Speed



Spin Rate



Ball Speed



Smash Factor



Launch Angle

* Launch Angle only displayed in app.

GETTING THE ES15 APP

Find the App

Windows and iOS users search for ES14 app.

Another added feature of the ES15 Range is the ability of each unit to connect with a golfer's smart device and then record each range session. To take advantage of this feature:

1. For Apple devices go to the App Store and search ES14. Be sure to download the FREE APP. Ernest Sports also offers a Club Fitting app for iPads for a small fee.
2. For Android devices go the Play Store and search ES15.
3. For Windows devices using Windows 8 or Windows 10 go to Microsoft Store and search ES14.

ATTENTION:

iOS users: To download the app for the iPad, go to the app store.

1. Type in ES14 in the search bar and search.
2. At the top left of the page iPad Only will appear.
3. Click on iPad Only and change the selection from iPad Only to iPhone Only.
4. The correct app will then appear on screen to select and download.

ES15 APP

Range Session

Start a new range session or join a saved session.

Session Logs

View data from previously recorded sessions.

Club Averages

View averages of all statistical information for each club.

Settings

Change settings for Averages, Units, Distance Type and Links.

Tutorial

Digital version of the ES14 Quickstart Guide.

Skills Challenge

The purpose of the Skills Challenge is to test how well you know your distances.



Bluetooth Connection

Apple Connecting:

On your Apple device, go to “Settings” and then to “Bluetooth”. Turn Bluetooth ON. Scan for devices. Once found, select ES14 to connect. You will need to repeat these steps each time the ES15 is powered off.

Android Pairing:

On your Android device, go to “Settings.” Go to “Wireless and Network,” then “Bluetooth Settings.” Scan for devices and select ES15. Accept the pairing request when prompted. The ES15 will connect as needed after this point. However, It may be necessary to cycle the power for the ES15 between range sessions.

Location of Bluetooth Settings may vary between versions of Android devices. Not all Android operating systems are the same. Please call Ernest Sports for further assistance.

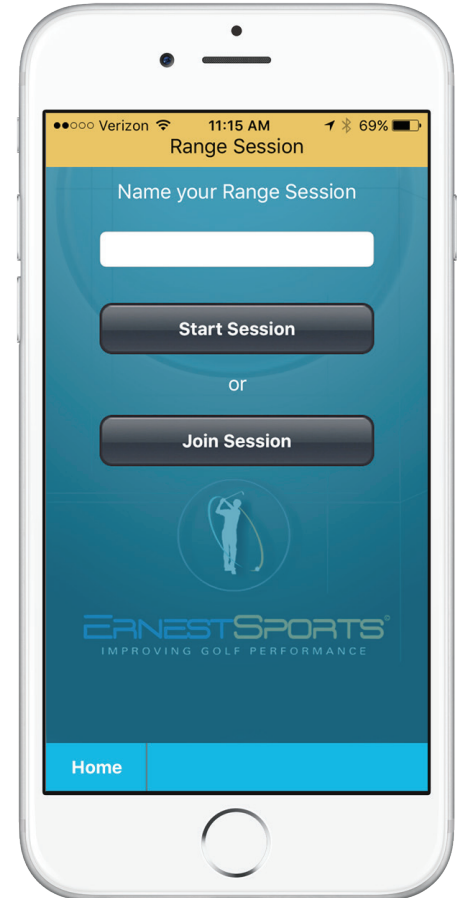
Windows Pairing:

On your Windows device go to “Settings” and then to “Bluetooth”. Turn Bluetooth On. Scan for devices. Once found, select ES14 then select Pair. The ES15 will connect as needed after this.

Range Session

To begin using the app with your ES15 device

1. Connect your smart device with the ES15 via Bluetooth.
2. Once device states it is connected, allow 5-6 seconds for connection to complete.
3. Select your club on your ES15.
4. Select RANGE SESSION on the Home Page of the App.
5. Select Start Session in the app and NAME THE SESSION.
6. You are ready to begin. Once you hit, the information for that shot will be displayed on the ES15 and then in the app.
7. When finished with your session, choose End/Save.

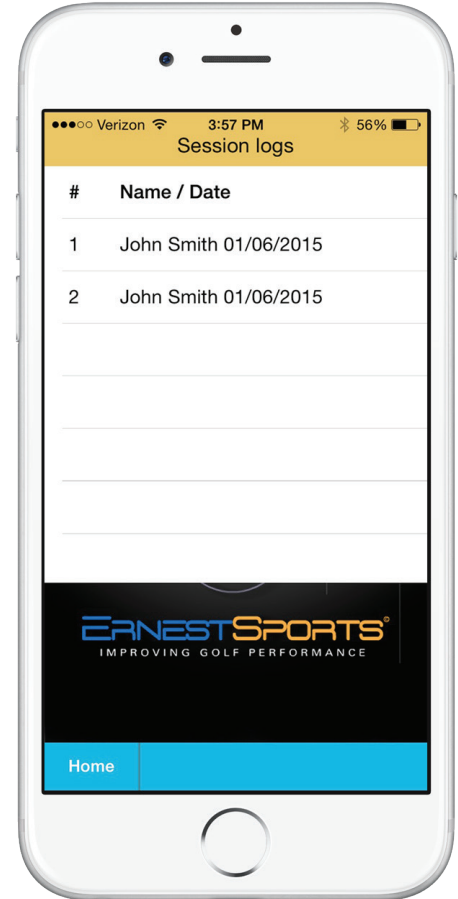


IMPORTANT:

THE APP WILL NOT AUTOMATICALLY RECORD THE DIRECTION OF YOUR SHOT. YOU HAVE THE OPTION TO MANUALLY RECORD THE DIRECTION. EACH SHOT WILL RECORD AS STRAIGHT, IF NOT MANUALLY ENTERED.

TO JOIN A SESSION

1. Select Join Session on the Range Session Screen.
2. Scroll through the log information and select a session.
3. You are ready to begin. Once you hit, the information for that shot will be displayed on the ES15 and then in the app.
4. When finished with your session, choose End/Save.



Viewing Options

Your Range Session information is displayed in four ways:

1. Shot by shot: Circular View
2. Shot by shot: Column View
3. Complete session: Scrolling View
4. Animated: Simulation View

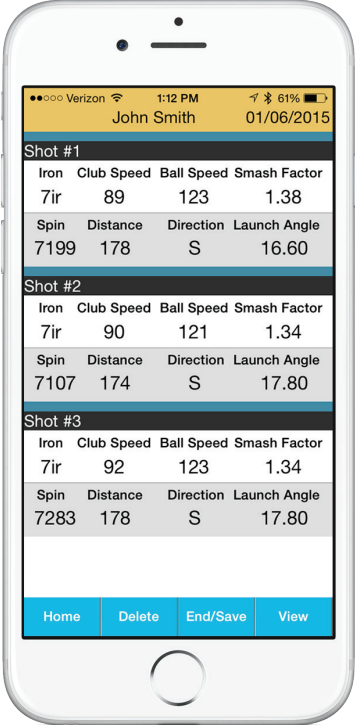
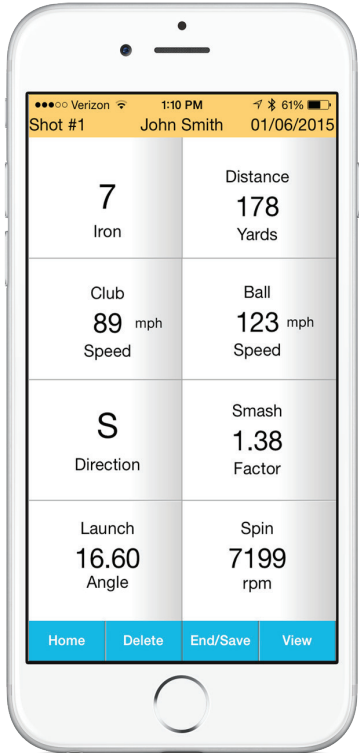
You may switch between the different views by pressing the View button in the bottom right corner of the screen.

The 1st view displays the club used and stats about the current shot in a CIRCULAR FORMAT.

NOTE: YOU SELECT THE DATA TO BE DISPLAYED IN THE LARGER CIRCLE BY TAPPING ON THAT OUTER CIRCLE.

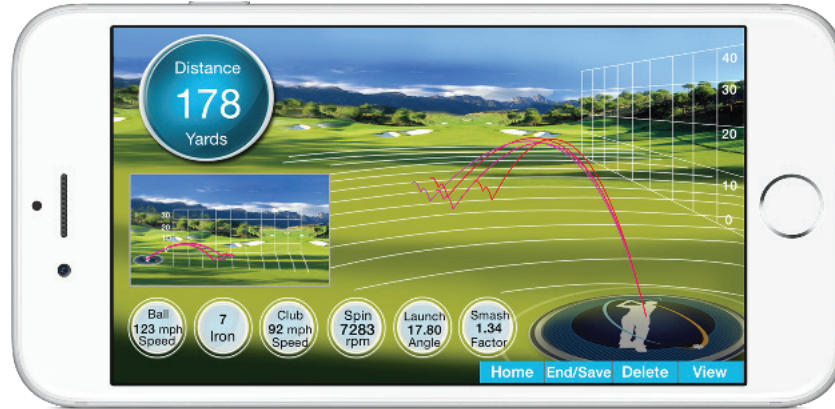


The 2nd view displays the club used and stats about the current shot in COLUMNS. The 2 columns have large, easy-to-read numbers.



The 3rd view displays every shot in your current session in a scrolling format.

The 4th view is a simulated view of your shots with statistics for the current shot.

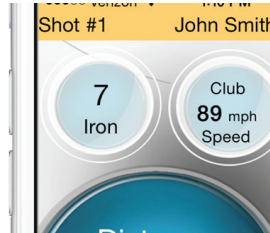


Your information may also be viewed on a monitor by connecting your smart device to the monitor using an HDMI cable and a multi-media adapter.

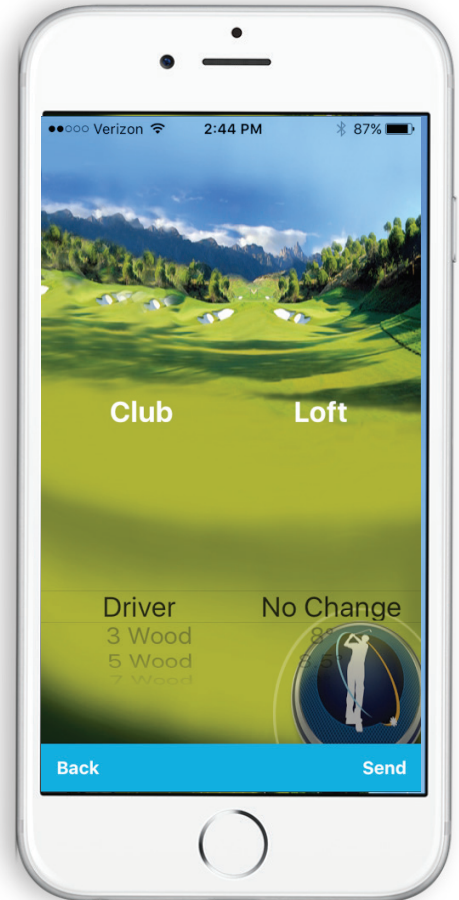
To create a studio effect, connect your smart device to a projector using the HDMI and adapter. Remember, all shot distances will be audible no matter the set up of the 4th view.

Club & Loft Selection

The Club/Loft page of the app is accessed by pressing the button identifying the club in your current range session (1st view display).



While on the Club/Loft page simply use the scrolling wheel to select the Club and you may also select the loft of club you are using. The Loft settings include a No Change option as well as a list of appropriate loft options with the default loft setting labeled as Std. After making your selections press the Send button at the bottom to send your changes to the ES15 and return to your session or press Back to return to your session without any changes.



Default Information

When ordering the ES15, the following information will be programmed into the unit:

Club	Degree of Loft	Club	Degree of Loft
Driver	10.5	2 Iron	17
3 Wood	13	3 Iron	19
5 Wood	16	4 Iron	22
7 Wood	19	5 Iron	25
2 Hybrid	17	6 iron	28
3 Hybrid	19	7 Iron	31
4 Hybrid	22	8 Iron	35
5 Hybrid	25	9 Iron	39
Club	Degree of Loft		
P Wedge	44		
G Wedge	49		
S Wedge	54		
L Wedge	59		

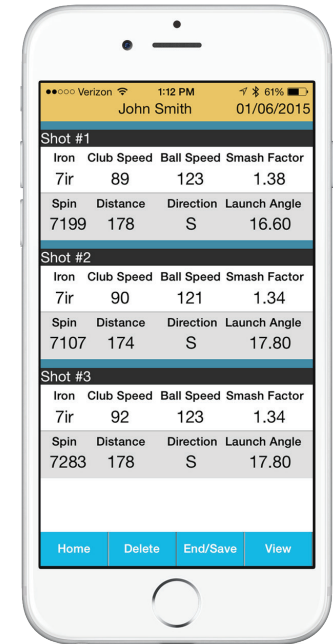
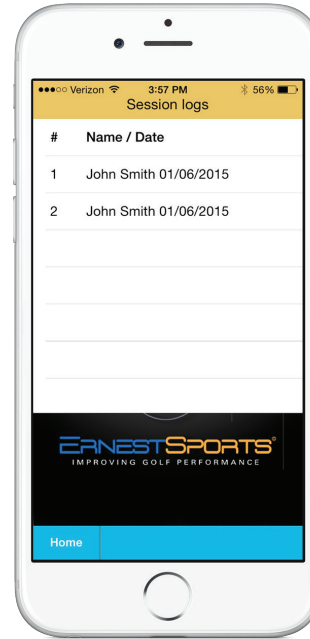
Session Logs

In this section of the app, you may view all previous range sessions.

First select the Session you want to see. The app will then open that Range Session, allowing you to view, edit, delete, or email data from your range session. You can delete shots by swiping right to left and tapping delete. The entire session can be deleted selecting delete from the blue bar.

You can also email the session log in the form of an Excel spreadsheet by selecting the email option from the blue bar.

WARNING: You must have the default email program for your smart device set up before using this feature.



Club Averages

This feature of the app displays all clubs used in your Range Sessions.

Select a club, and the app will open a smaller window with that club's info. That info shown will be an average of each of the following categories: Club Speed, Ball Speed, Smash Factor, Spin, Distance and Launch Angle.

Club averages can be viewed for all sessions or a single session. This option can be changed from the settings screen.



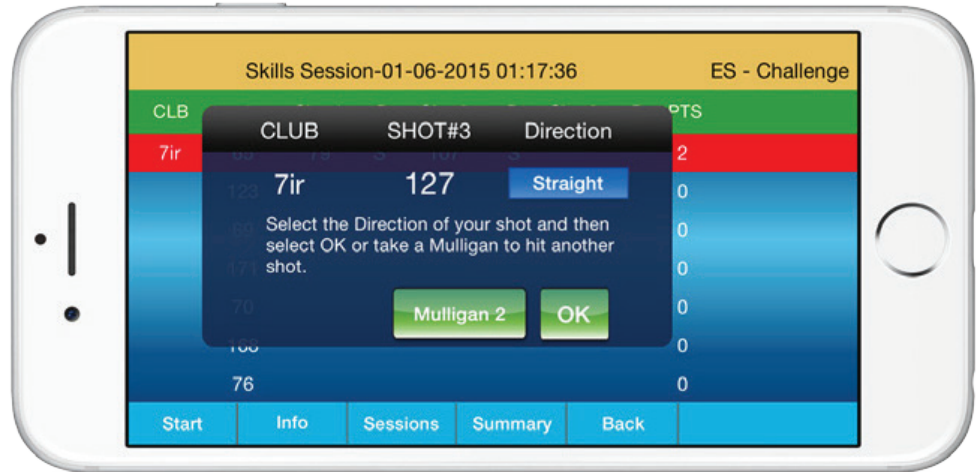
Skills Challenge

The purpose of the Skills Challenge is to test how well you know your distances.

To use, press start, then sessions. Select new. You then have the option of hitting even, odd, or random yardage shots. Skills Challenge gives you 10 distances with 3 tries to make each distance. There are also 2 mulligans available to improve your score. Your score is based on how close your ball comes to the target.

Info is a quick explanation of how the Skills Challenge works. Summary shows your total score for the current session.

If you do not finish a challenge, you can rejoin a session.



WARRANTY

The ES15 is warranted for twelve (12) months against any manufacturing defects in materials and workmanship, and for all parts and labor. The warranty applies only to the original purchaser of this product. Warranty work may be completed only by Ernest Sports. If the device is not found to be defective, no warranty work will be performed.

This warranty does not cover damage that is the result of modifications of the product, misuse, abuse, neglect, negligence, vandalism, accident, or abnormal conditions, including but not limited to war, flood, fire, wind or damage caused by occurrences over which Ernest Sports has no control.

For more information call 855-354-4653.



ERNESTSPORTS®
IMPROVING GOLF PERFORMANCE

855.354.GOLF » www.ernestsports.com » 5275 Triangle Parkway, Suite 150, Norcross GA 30092



[www.FACEBOOK.com/ernestsports](https://www.facebook.com/ernestsports)



[www.TWITTER.com/ernestsports](https://www.twitter.com/ernestsports)