

Your Wossner 8327D series piston was designed for high performance and reliability, using premium materials and manufacturing methods. This piston was designed to be installed with no modifications.

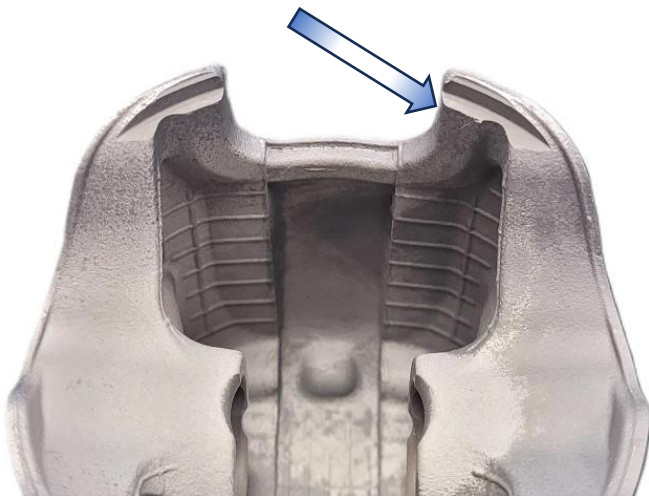
The Wossner Technical Department has received correspondence regarding non-Wossner pistons intake skirt making contact with the crankshaft during operation, leading to catastrophic engine failure. This document is meant to educate specifically about this condition.



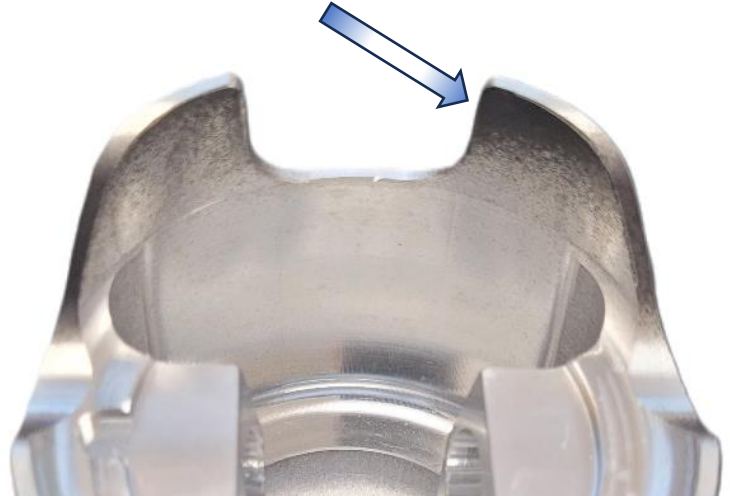
CAUTION: Any unintentional contact between a piston and other internal engine components, such as crankshafts, cylinder heads, connecting rods, etc., can lead to engine damage or catastrophic engine failure. Always inspect the final rotating assembly for proper clearance prior to starting an engine after rebuilding.

The intake piston skirt length of the Wossner piston is machined to be the same as the OEM piston. This length is important for piston support and port timing; therefore, it is important to maintain this relationship.

Some pistons are making contact with the crankshaft in an area this is located withing the inside wall of the intake piston skirt:



POTENTIAL CONTACT AREA



WOSSNER MACHINED AREA

Due to the machining process used in the manufacture of the Wossner 8327D series piston, this potential contact area provides the required clearance to the crankshaft.

TERMS AND CONDITIONS: Due to the nature of high performance and racing applications, Wossner components are sold without express warranty or any implied warranty of merchantability or fitness for a specific purpose. Wossner shall not, under any circumstances, be liable for any specific, incidental or consequential damages, including, but not limited to, damage, or loss of property or equipment, loss of profits or revenue(s), cost of purchased or replacement goods, or claims of customers of the purpose, which may arise and/or shall result from sale, installation or use of these parts. Installation of these parts may void vehicle manufacturers warranty coverage and/or may cause the vehicle to be illegal in some countries. Please check with local laws on the road use of your vehicle. Wossner reserves the right to make product improvements and changes without incurring liability with respect to similar products previously manufactured. By using these parts you are accepting these terms and conditions.