

Congratulations on your purchase of the Wossner WBC8147 Performance Replacement Cylinder for your KTM 85SX, Husqvarna TC85, or Gas Gas MC85. This cylinder was designed and manufactured using OEM level materials for reliable performance

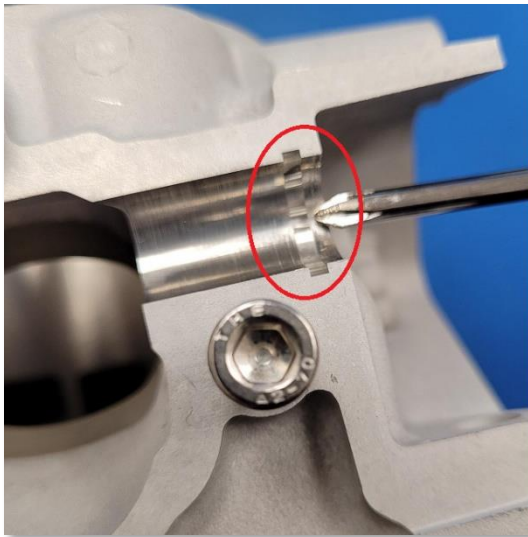
These instructions are intended to provide you important information for the proper preparation and installation of your new cylinder. Always refer to the OEM service manual for proper assembly sequence, methods, and assembly torque values for all fasteners. All mating components must be in proper working order for the cylinder and top end to operate properly



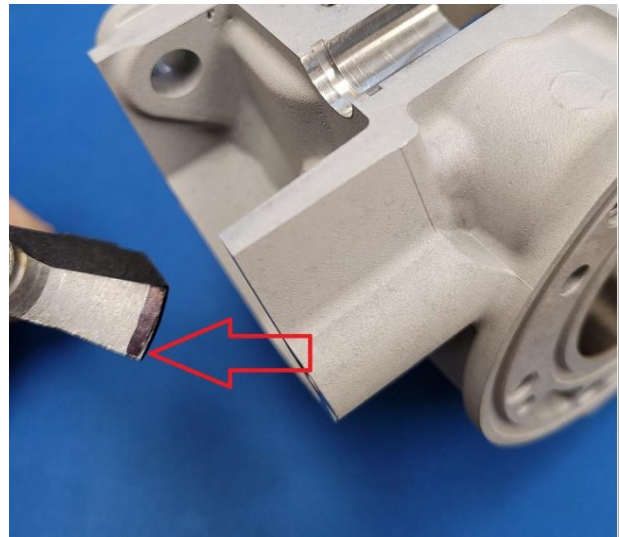
NOTE: Always refer to the OEM service manual for critical engine data. When installation is not clear, contact your dealer or professional engine builder before proceeding

- Inspect the cylinder for general cleanliness and burrs before assembly
- Closely inspect the exhaust valve area for burrs, remove any carefully using a small pick (see PIC A)
- Thoroughly clean all exhaust valve components before assembling onto your new cylinder. Remove any excess carbon and inspect for wear. Replace any components that are worn beyond service limits
- Due to manufacturing production tolerances, there may be small variations of fitment between the cylinder and the exhaust valve 47237020000. The valve must be able to move freely.
- Mark the exhaust valve 47237020000 with machinists die, magic marker, or equivalent (see PIC B)
- Loosely assemble the exhaust valve 47237020000 using the guide bushings, and check that the valve can move freely up and down
- Remove the valve and inspect the died area for contact – these areas may need a small amount of filing or sanding for the valve to move freely. It is recommended to do this with 320 – 400 grit emery paper, polishing only a small amount and test fitting, until proper free movement is achieved
- Thoroughly wash and clean the cylinder using hot soapy water, and dry thoroughly using compressed air. Apply a thin film of two stroke oil to the cylinder surface, and proceed with assembly following the OEM service manual steps

PIC A



PIC B



TERMS AND CONDITIONS: Due to the nature of high performance and racing applications, Wossner components are sold without express warranty or any implied warranty of merchantability or fitness for a specific purpose. Wossner shall not, under any circumstances, be liable for any specific, incidental or consequential damages, including, but not limited to, damage, or loss of property or equipment, loss of profits or revenue(s), cost of purchased or replacement goods, or claims of customers of the purpose, which may arise and/or shall result from sale, installation or use of these parts. Installation of these parts may void vehicle manufacturers warranty coverage and/or may cause the vehicle to be illegal in some countries. Please check with local laws on the road use of your vehicle. Wossner reserves the right to make product improvements and changes without incurring liability with respect to similar products previously manufactured. By using these parts, you are accepting these terms and conditions.