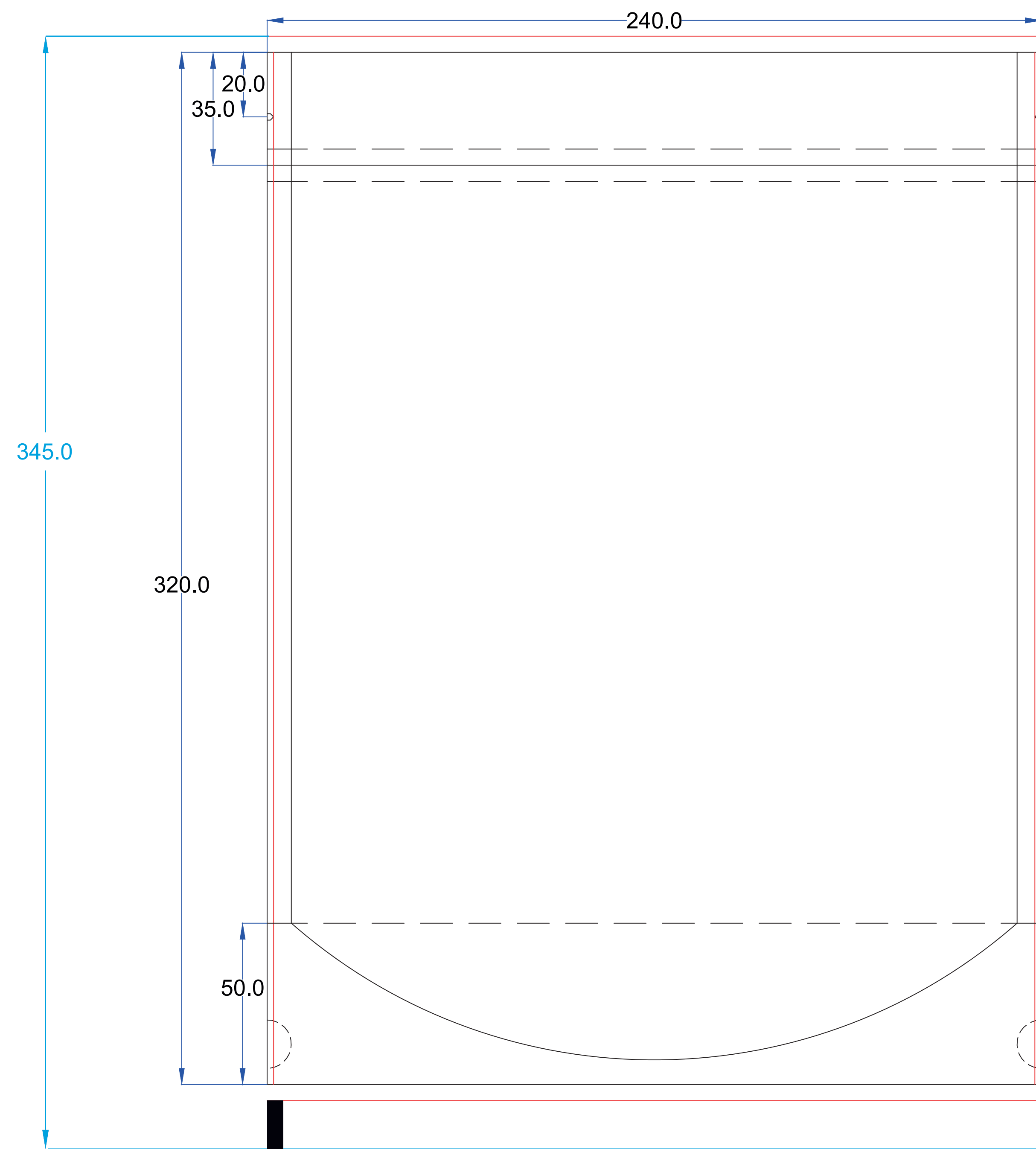
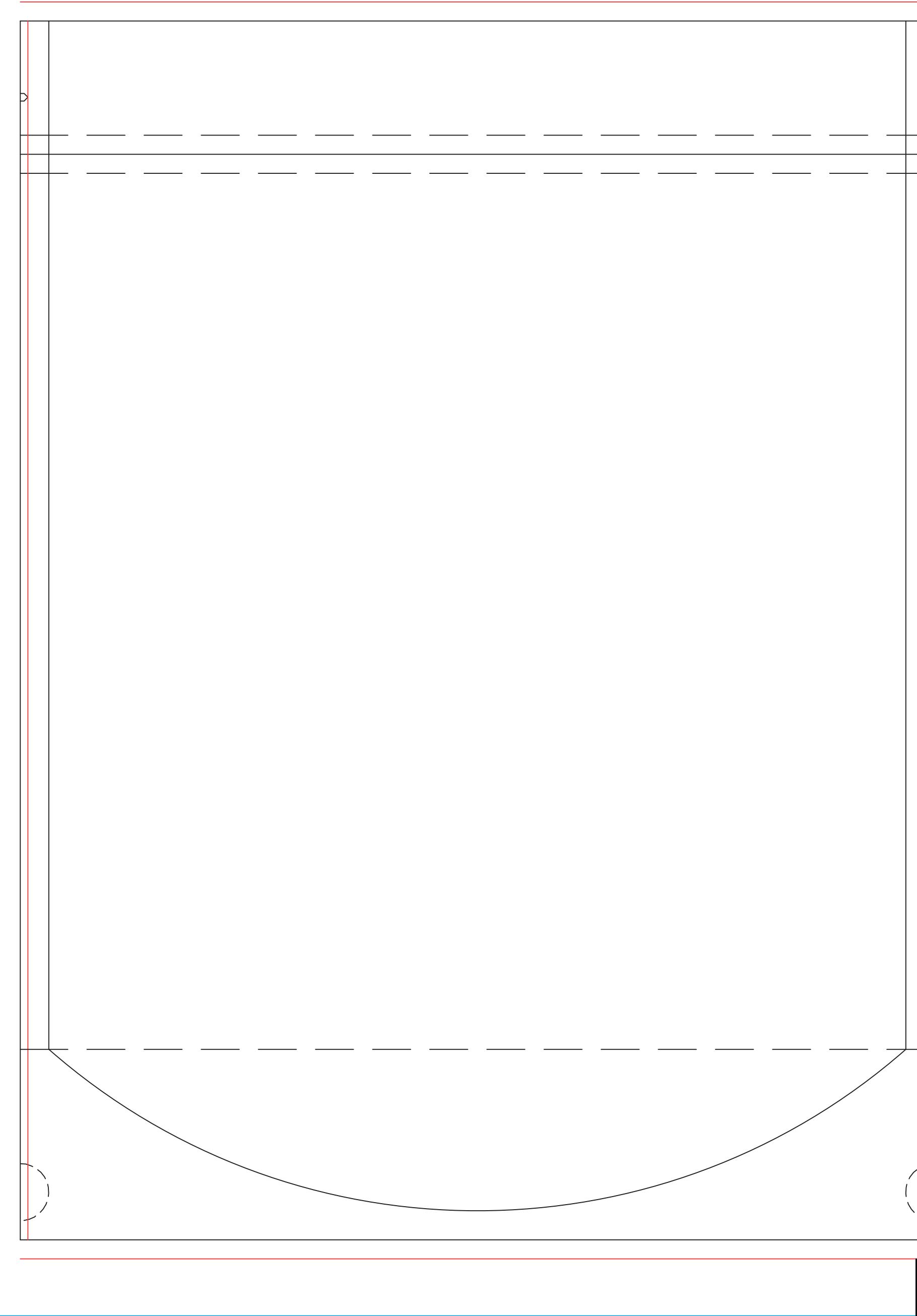


FRONT

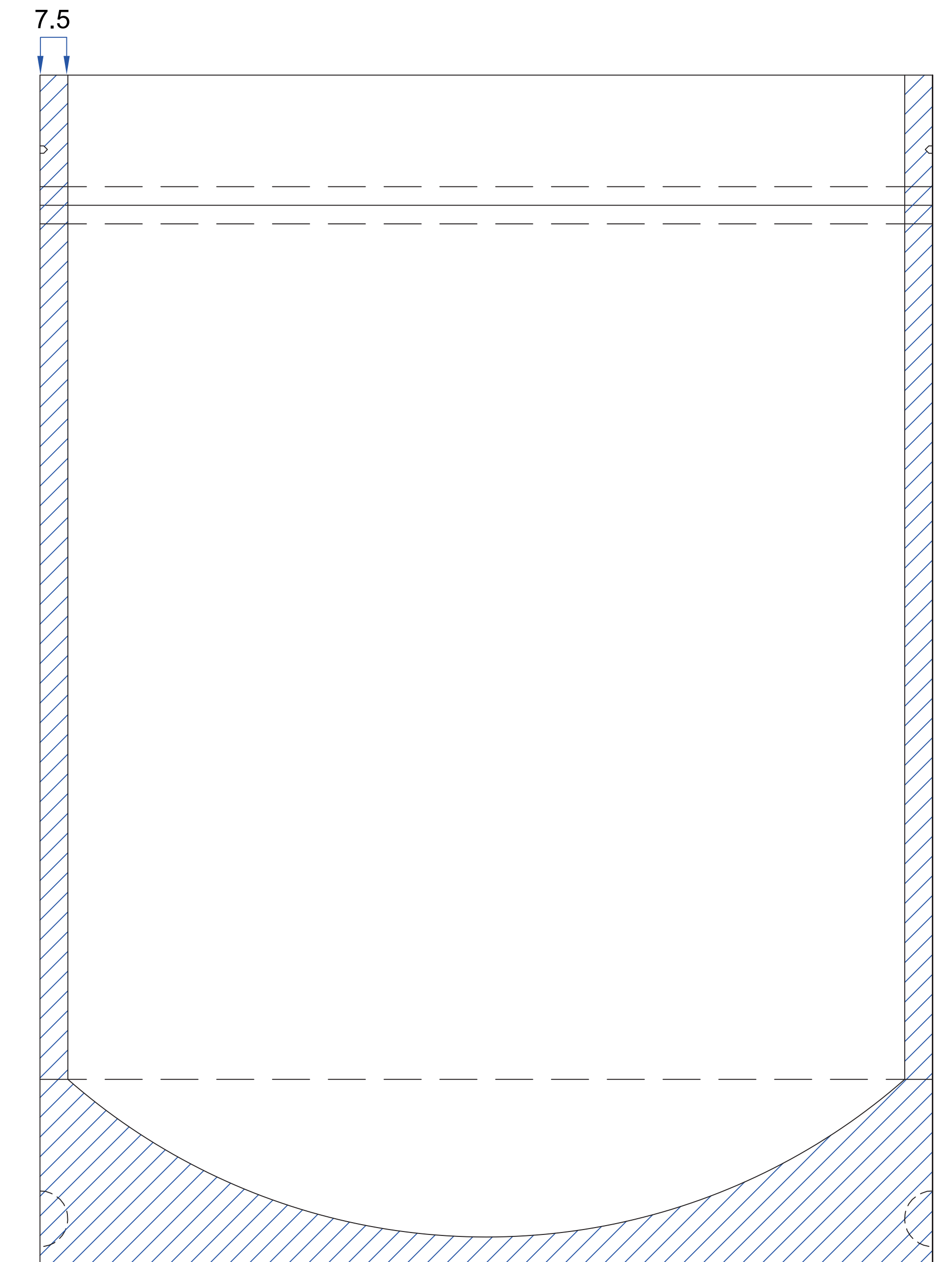


BACK



SEAL AREA

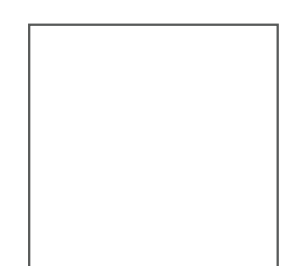
Diagram Only-
Please do not use for artwork.



All dimensions are in mm and outside dimensions unless otherwise noted



MAGENTA AREAS ON WHITE LAYER=
AREAS THAT WILL HAVE WHITE PRINTED UNDERNEATH ARTWORK.
SUPPLIED AS DEFAULT.



WHITE AREAS ON WHITE LAYER=
AREAS THAT WILL HAVE NO WHITE PRINTED UNDERNEATH ARTWORK
(SHOWS METALISED FINISH FROM UNDERNEATH OR
ALLOWS FOR A PRODUCT WINDOW IN CLEAR FILMS)

Bag Style	Stand Up Pouch	Scale	1:1
Pouch Size	240 x (320 + 100)	Zipper	35mm FROM TOP
Tear Notch	20mm FROM TOP	Sealing Width	7.5mm
Material Width inc. 5mm bleed top/bottom +15mm eyemark			345.00mm



PLEASE NOTE:

Artwork must reach the top and bottom 5mm **external** red bleed line. Final artwork length should be 10mm longer than finished pouch height.

Artwork designs within the left and right 2mm **internal** red bleed line must match side to side (solid background colour) to safe guard against any minor movements during production.