

# SAN JAMAR **Tear-N-Dry Essence** TOUCHLESS TOWEL DISPENSERS INSTRUCTIONS

## **MOUNTING INSTRUCTIONS (Dispenser must be mounted level)**

The user is responsible for the proper installation and use of this dispenser.

### **Equipment needed:**

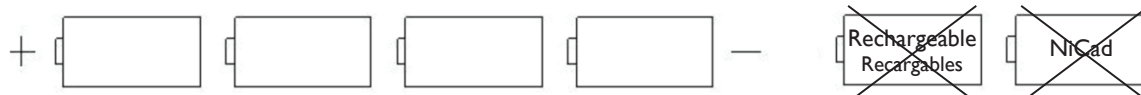
- Measuring tape
- Level
- Screwdriver
- Eye protection
- Pencil
- Drill and drill bit
- Assemble appropriate fasteners (screws, bolts, anchors, washers, etc.) for mounting.

1. Determine position on wall/surface with unit open. Through the holes at the back of the unit, use pencil to mark the spots where the drilling will be necessary. Be sure unit is level before marking holes. **WARNING: Proper function of this dispenser requires level mounting.** Try to mark spots as close as possible to the outer edges.
2. Drill the marked spots on the wall/surface with appropriate sized drill bit suitable for the wall material and fasteners used.
3. Complete the installation. Be sure to use fasteners (and anchors) in all mounting holes that are appropriate for the wall/surface to which the dispenser will be mounted. The installation should be done with a flat washer between the head of the fastener and the inside back of the dispenser.

## **BATTERY LOADING**

The Tear-N-Dry Essence is powered by 4 D-cell alkaline batteries or by the optional I01320 A/C adapter. Take care to load batteries in correct orientation as shown on the battery compartment inside door. After inserting batteries wait 5 seconds before closing cover. If the batteries are loaded incorrectly, the Tear-N-Dry Essence will not function. A flashing red indicator light indicates that batteries need to be replaced. **WARNING: Do not use rechargeable or NiCad batteries as these may cause damage to your dispenser or personal injury.**

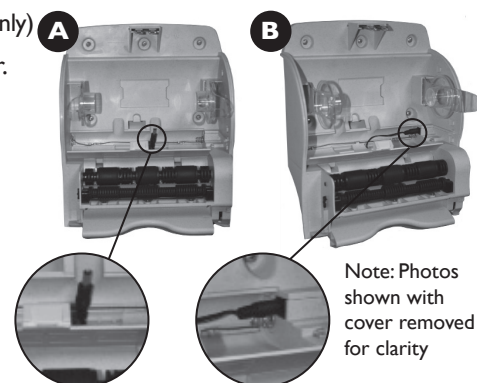
Take care to load batteries in correct orientation, with positive end of battery towards the left as you are facing the dispenser.  
(Tenga cuidado al instalar las baterías, oriéntelas con el lado positivo hacia su derecha cuando este de frente al dispensador).



Note: If batteries are loaded incorrectly, the unit will not function. (Nota: Si las baterías son instaladas incorrectamente, el unidad no funcionará.)

## **A/C ADAPTER INSTALLATION INSTRUCTIONS (for units with A/C Adapter units only)**

- Step 1 While dispenser remains mounted to the wall, open dispenser cover and remove paper.
- Step 2 Open battery cover.
- Step 3 If batteries are in place remove or remove plug of old adapter and unplug adapter from wall outlet.
- Step 4 Feed new adapter plug from underneath unit through hole as shown in image (A).
- Step 5 Plug into jack on right wall of battery compartment as shown in image (B). Plug A/C adaptor into wall outlet - red light should blink three times.
- Step 6 Close battery cover then install paper and close dispenser cover.



## **PAPER LOADING**

- Step 1 Open cover and load paper onto hubs.
- Step 2 Pull down and drape so that paper is hanging off the back of the roll.
- Step 3 Pinch paper by rolling between two rollers.
- Step 4 Close cover. Dispenser will feed the first sheet and is ready for use.

**SAN JAMAR**  
Smart ♦ Safe ♦ Sanitary

## USING THE DISPENSER

After loading paper and supplying power, simply close the dispenser cover. A towel will be dispensed, and the Tear-N-Dry Essence is now ready for use.

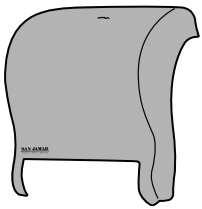
## PROBLEMS

Typical problems can be corrected by opening and closing the cover. If that fails to resolve the problem, try removing and then reinserting the batteries or A/C adapter. If that fails, try replacing with new batteries. If problems still persist, please call San Jamar Customer Care (1-800-248-9826).

## Thank you for your purchase of a San Jamar Tear-N-Dry Essence

We appreciate your business and are confident that you will benefit from the smart design and innovative features of your dispenser. San Jamar offers a variety of washroom dispenser solutions that are designed to improve the efficiency and image of your operation. If you would like any further information on these or other San Jamar products, please contact us at 1-800-248-9826.

## Other Accessories Available



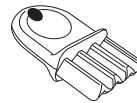
XI00916\* Classic Replacement Cover  
XI00916\* Couvercle de Rechange Classique  
XI00916\* Tapa de Reemplazo (Classic)

\* Please specify color: (TBK) Black Pearl, (TBL) Artic Blue, or (WH) White

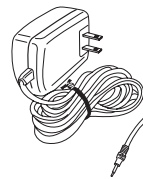


XI02194\* Oceans Replacement Cover  
XI02194\* Couvercle de Rechange Oceans  
XI02194\* Tapa de Reemplazo (Oceans)

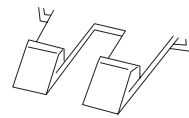
\* Please specify color: (TBK) Black Pearl or (TBL) Artic Blue



NI6 Replacement Key  
NI6 Clef De Remplacement  
NI6 Llave de Reemplazo

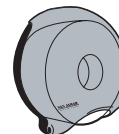
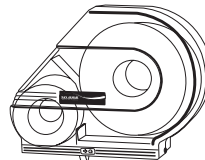
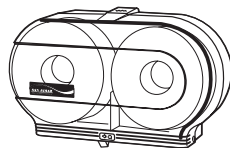
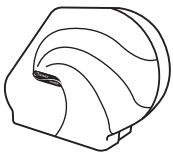


101320 AC Adapter  
101320 Adapteur À AC  
101320 Adaptador AC



T1438 Replacement Lock Fingers  
T1438 Doigts de serrure  
T1438 Dedos de la Cerradura de Reemplazo

## Matching Oceans® and Classic Dispensers Available



San Jamar  
Chef Revival  
555 Koopman Lane  
Elkhorn, Wisconsin 53121  
USA  
T: +1.262.723.6133  
F: +1.262.723.4204  
sanjamar@sanjamar.com

SJCR Canada  
3300 Bloor Street West  
Center Tower, 11th Floor,  
Suite 3140  
Toronto, ON M8X 2X3  
CANADA  
T: +1.416.760.7367  
F: +1.416.207.2071  
info@sjcrCanada.com

SJCR Europe  
Schoorstraat 26A  
Bus-1 B-2220 Heist op-den Berg  
BELGIUM  
T: +32 1522 8140  
F: +32 1522 8148  
sjcreurope@sjcrworld.com

SJCR México  
Av. Universidad #1377-701  
Colonia Axotla CP 01030  
Del. Álvaro Obregón  
MÉXICO, DF  
T: +52 (55) 3626 0772  
F: +52 (55) 5273 4495  
sjcrmexico@sjcrworld.com

**SAN JAMAR**  
Smart ♦ Safe ♦ Sanitary

I01327 Rev E