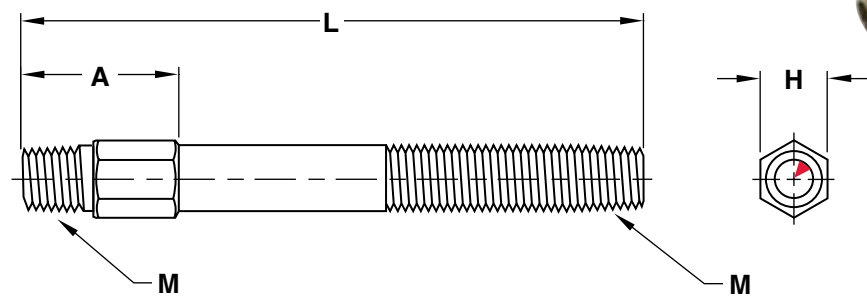




ADJUSTABLE HEX NIPPLES



M Brass

▶ CAD insertion point

CATALOG NUMBER	M Pipe NPT	A	H Hex Size	Available Overall Lengths (L)								
				2.5	4	5.5	7	8.5	10	11.5	13	
APN06	1/16	.68	.37	•	•	•	•	•	•	•	•	•
APN12	1/8	.75	.43	•	•	•	•	•	•	•	•	•
APN25	1/4	.87	.56	•	•	•	•	•	•	•	•	•
APN37	3/8	1.00	.68	•	•	•	•	•	•	•	•	•
APN50	1/2	1.37	.87	•	•	•	•	•	•	•	•	•

To Order:

Specify prefix and length. Ex. APN50L11.5

Alternative materials and configurations available:

For Hex Nipples manufactured from stainless steel, add an "-SS" to the end of the catalog number.
Ex. APN25L7-SS or APN50L4-SS

Hex Nipples can be ordered cut to any length, in any quantity. Specify the catalog number (for brass or stainless steel) with required length.
Ex. APN25L6.25 or APN37L5.75-SS

PIPE NIPPLES



M Brass or Galvanized Steel

Brass Catalog Number	Steel Catalog Number	Pipe Size NPT	Close Overall Length	Available Overall Lengths (L)																	
				Close*	1	1.5	2	2.5	3	3.5	4	4.5	5	5.5	6	7	8	9	10	11	12
BPN06	GPN06	1/16	.62	•	†	•	•	•	•	•	•	•	•	•	•	•	•	•	•	•	•
BPN12	GPN12	1/8	.75	•		•	•	•	•	•	•	•	•	•	•	•	•	•	•	•	•
BPN25	GPN25	1/4	.87	•		•	•	•	•	•	•	•	•	•	•	•	•	•	•	•	•
BPN37	GPN37	3/8	1.0	•		•	•	•	•	•	•	•	•	•	•	•	•	•	•	•	•
BPN50	GPN50	1/2	1.12	•		•	•	•	•	•	•	•	•	•	•	•	•	•	•	•	•

*Close is the shortest available nipple length.

†Available in BPN only.

Note: GPN06 is stainless steel.

To Order:

Specify Prefix and length. Ex. BPN37CLOSE or BPN12L3.5

Pipe Nipples can be ordered cut to any length, in any quantity. To order, specify the prefix (BPN##) and required length. Ex. BPN37L5.25 or GPN12L2.25