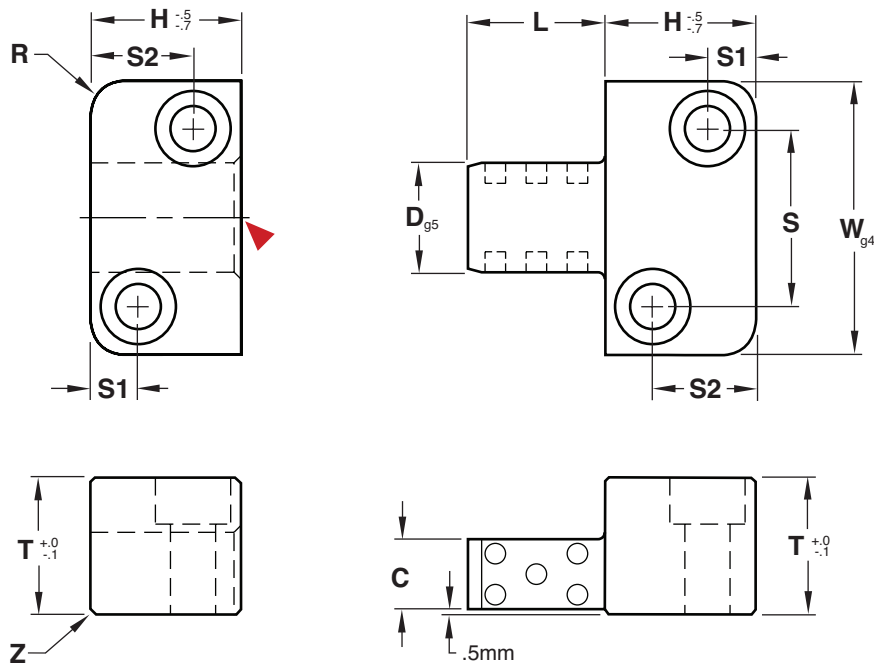




SIDE LOCKS GRAPHITE PLUGGED



M O-2 H 56-60 HRC

CAD insertion point

CATALOG NUMBER	L	D	T	W	C	H	S1	S2	S	R	Z	Screw Size
SLPM16X20	20	16	20	40	11	22	7	15	26	6	1	M6-1.0 x 25
SLPM16X40	40											
SLPM20X25	25	20	22	45	13	27	7	19	31	6	1	M6-1.0 x 25
SLPM20X50	50											
SLPM25X32	32	25	25	50	14	36	9	27	35	8	1	M6-1.0 x 30
SLPM25X63	63											
SLPM32X40	40	32	32	63	19	46	11	35	45	8	1	M8-1.25 x 35
SLPM32X80	80											
SLPM40X50	50	40	36	85	22	56	15	40	60	10	1.5	M10-1.5 x 40
SLPM40X100	100											
SLPM50X56	56	50	40	100	24	66	18	48	74	10	1.5	M12-1.75 x 45
SLPM50X112	112											

Screws included.

Using grease will inhibit the function of the graphite plugs. Instead, use a light 20 weight oil at startup to begin lubrication.