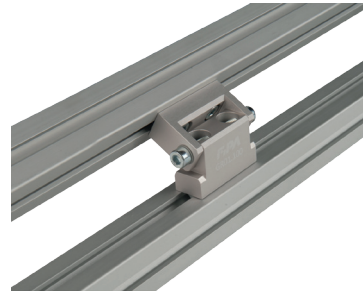
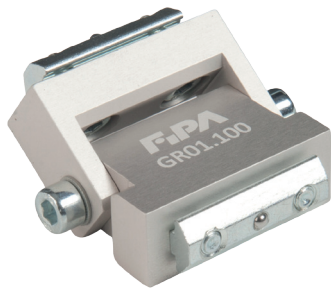




Profile connectors – rotatable



Product notes

- > Variable angle mounting of two parallel profiles
- > Rigid clamping through two opposing screws
- > 2x slot nut GR01.093A, with 2x M5 thread for length-ways mounting
- > 4x slot nut GR01.097A, with 2x M5 thread for horizontal mounting

Technical data

Item no.	Suitable for extrusion system	Weight [g]
GR01.100	SLine / MLine	78

Dimensions

