



### MLine extrusions



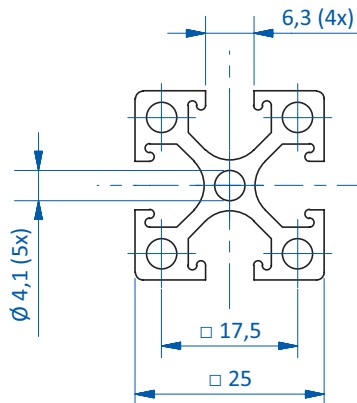
#### Product notes

- > Lightweight and rigid
- > Material: AlMgSi 0.5 F25
- > Special lengths over 2,000 mm on request

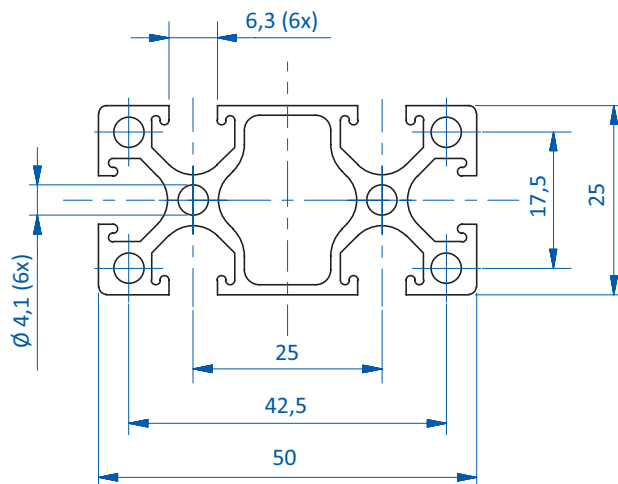
#### Technical data

Item no.	Length [mm]	Weight [kg/m]	Cross-section area [cm <sup>2</sup> ]	Moment of plane area axial Ix [cm <sup>4</sup> ]	Moment of plane area axial Iy [cm <sup>4</sup> ]	Moment of resistance axial Wx [cm <sup>3</sup> ]	Moment of resistance axial Wy [cm <sup>3</sup> ]	Suitable end caps
GR01.008.2000	1,960	0.61	2.48	1.58	1.58	1.26	1.26	GR01.017
GR01.009.2000	1,960	1.04	4.27	10.89	2.85	4.36	2.28	GR01.018

#### Dimensions



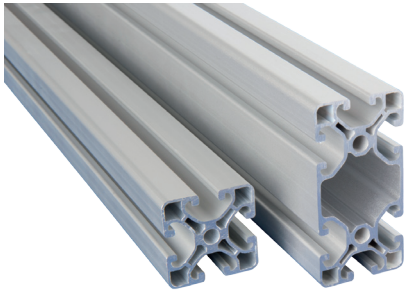
GR01.008.2000



GR01.009.2000



XLine extrusions



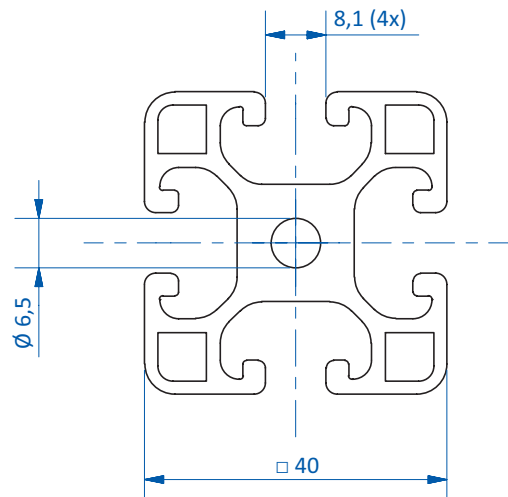
**Product notes**

- > High rigidity
- > Material: AlMgSi 0.5 F25
- > Special lengths over 2,000 mm on request

**Technical data**

Item no.	Length [mm]	Weight [kg/m]	Cross-section area [cm <sup>2</sup> ]	Moment of plane area axial Ix [cm <sup>4</sup> ]	Moment of plane area axial Iy [cm <sup>4</sup> ]	Moment of resistance axial Wx [cm <sup>3</sup> ]	Moment of resistance axial Wy [cm <sup>3</sup> ]	Suitable end caps
GR-XL01.003.2000	1,960	1.36	5.04	7.34	7.34	3.67	3.67	GR-XL01.012
GR-XL01.004.2000	1,960	2.37	8.73	14.7	57.7	7.37	14.4	GR-XL01.013
GR-XL01.005.2000	1,960	5.19	19.2	131	131	32.8	32.8	--

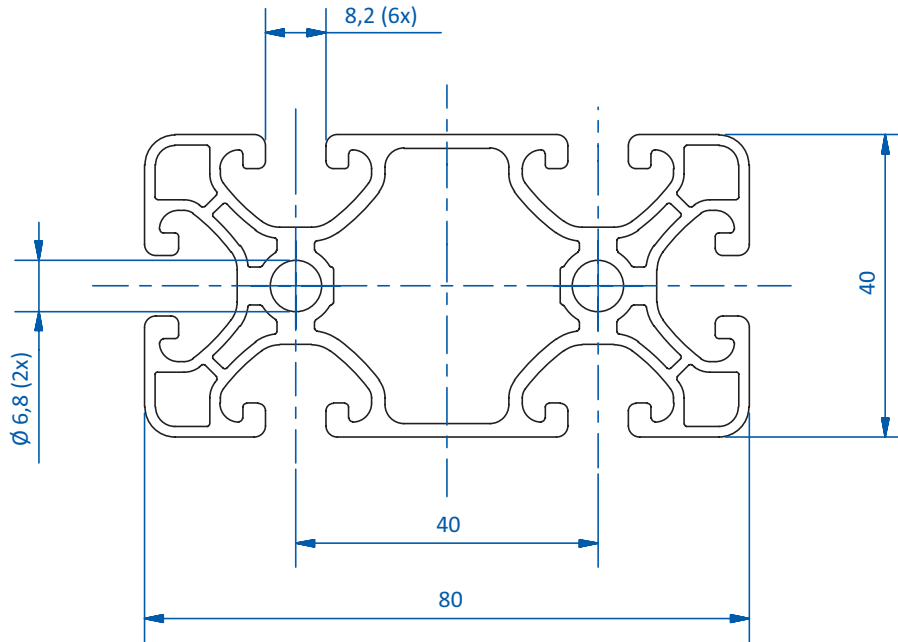
**Dimensions**



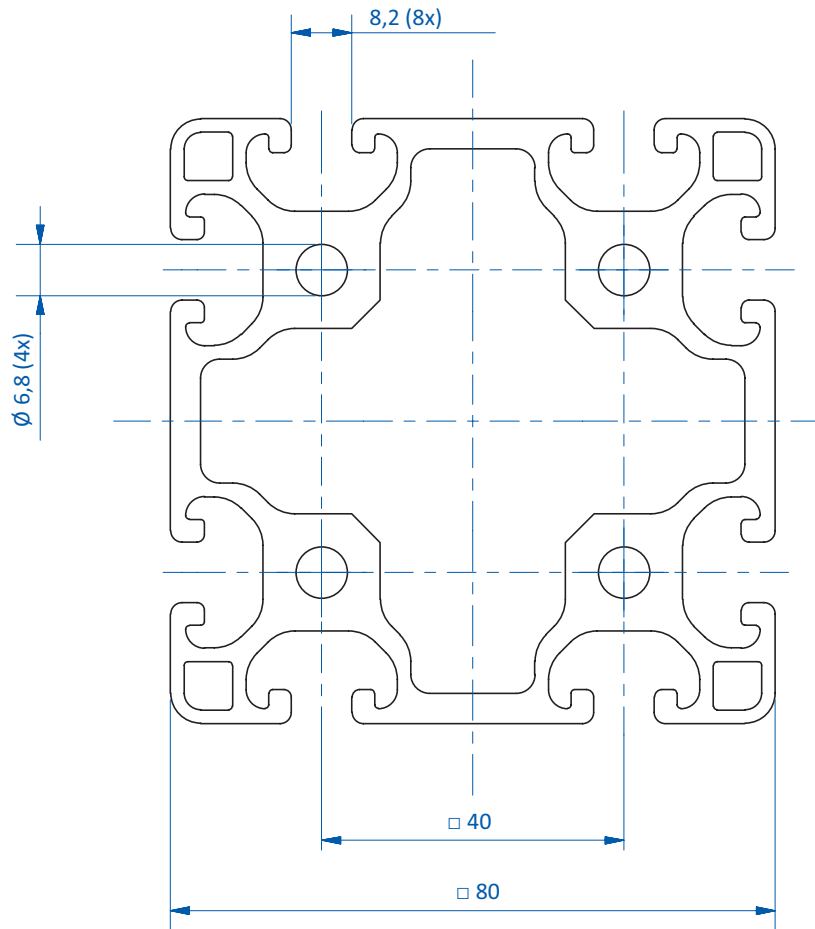
GR-XL01.003.2000



Dimensions



GR-XL01.004.2000



GR-XL01.005.2000



End caps



Product notes

- > For installation at the end of extrusion, reducing the risk of injury
- > Material: PA6 black

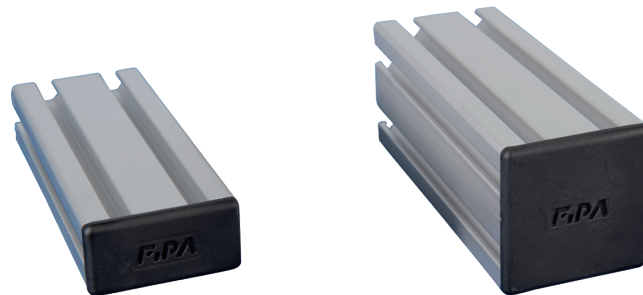
Technical data

Item no.	Suitable for extrusion system
GR01.010	SLine
GR01.011	SLine
GR01.012	SLine
GR01.013	SLine
GR01.015	SLine
GR01.016	SLine
GR01.017	MLine
GR01.018	MLine
GR-XL01.012	XLine
GR-XL01.013	XLine

Dimensions

A [mm]	B [mm]	C [mm]
10	20	3
10	40	3
20	20	3
20	40	3
20	80	3
40	40	3
25	25	3
25	50	3
40	40	4
40	80	4

Application examples



Dimensions

