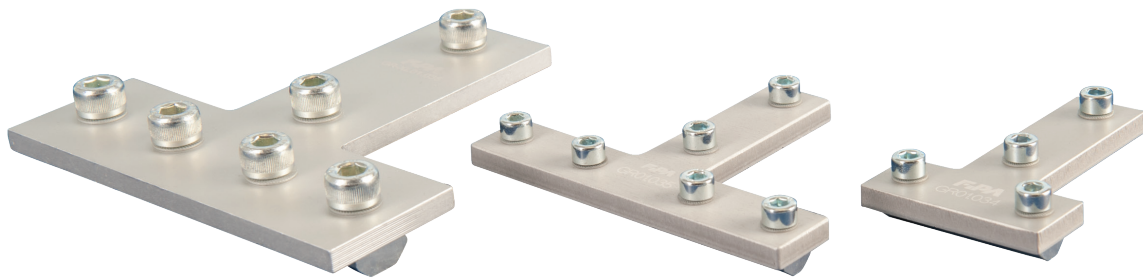




Flat connectors – T-form



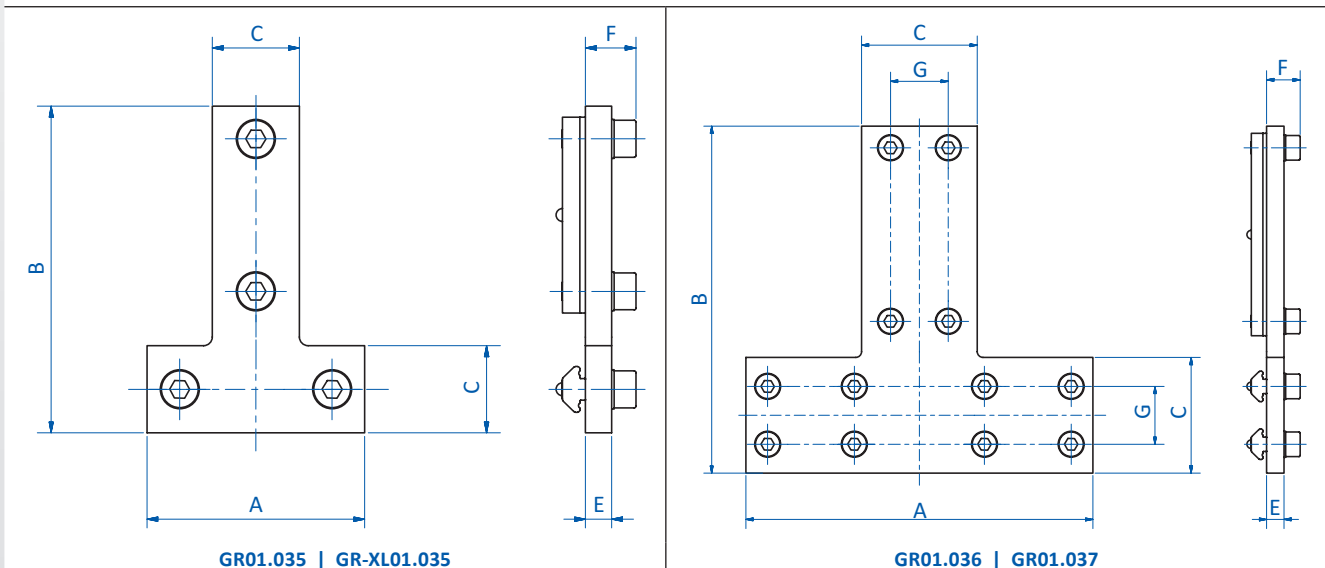
Product notes

> For rigid perpendicular connection of two profiles

Technical data

Item no.	Suitable for extrusion system	Weight [g]
GR01.035	SLine / MLine	95
GR01.036	SLine	123
GR01.037	MLine	268
GR-XL01.035	XLine	318

Dimensions



Item no.	A [mm]	B [mm]	C [mm]	E [mm]	F [mm]	G [mm]
GR01.035	100	75	20	3	9	--
GR01.036	120	120	40	3	9	20
GR01.037	120	130	50	3	9	25
GR-XL01.035	120	120	40	3	12	--