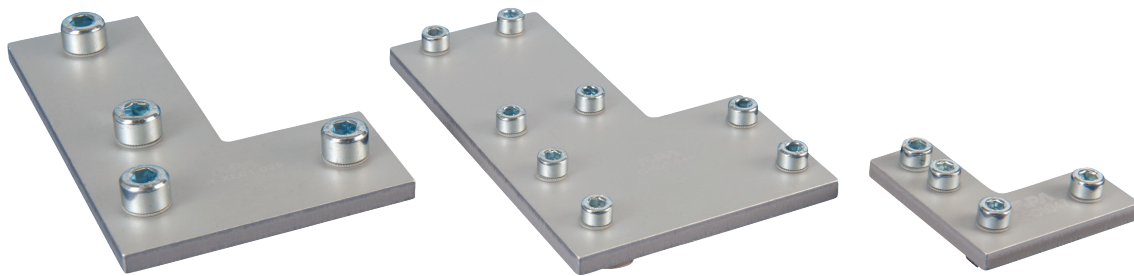




Flat connectors – L-form



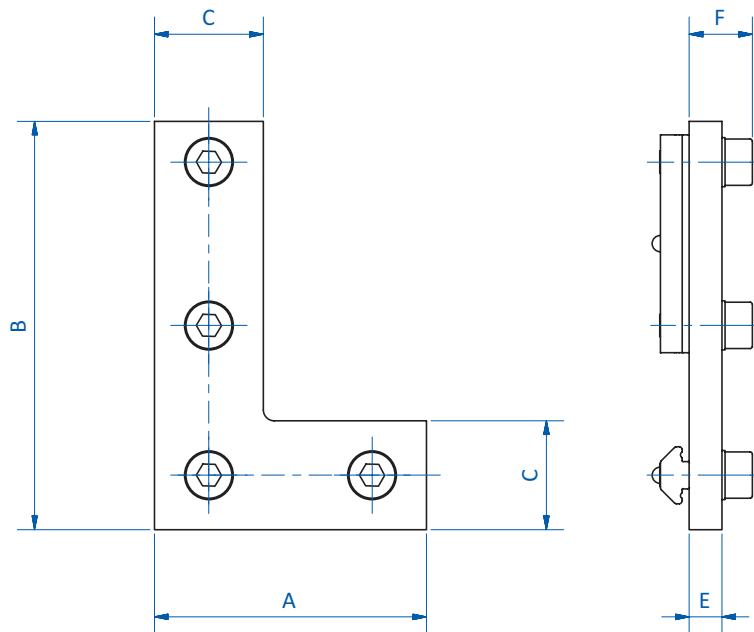
Product notes

> For rigid connection of two profiles at 90°

Technical data

Item no.	Suitable for extrusion system	Weight [g]
GR01.046	SLine / MLine	66
GR01.047	SLine / MLine	53
GR01.048	MLine	213
GR-XL01.029	XLine	260

Dimensions



Item no.	A [mm]	B [mm]	C [mm]	E [mm]	F [mm]
GR01.046	50	75	20	3	9
GR01.047	50	50	20	3	9
GR01.048	80	120	50	3	9
GR-XL01.029	80	120	40	3	12