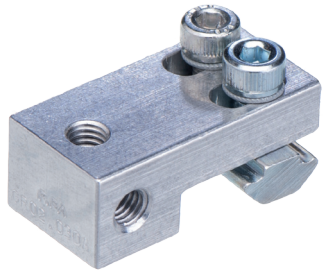




Angle connectors for vacuum cups



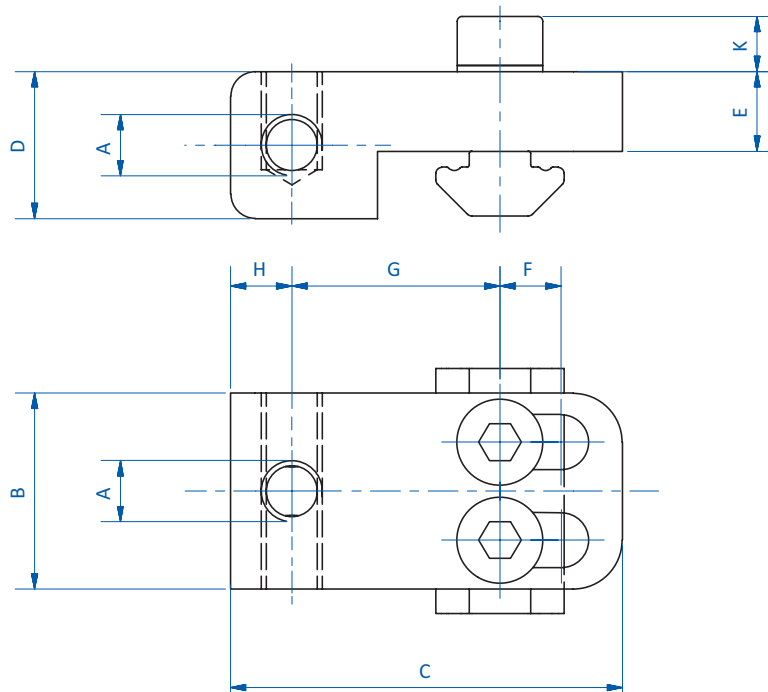
Product notes

- > Two vacuum ports
- > Slotted holes allow for use with profiles from 20 mm to 30 mm and 40 mm to 60 mm in size

Technical data

Item no.	Suitable for extrusion system	Weight [g]
GR02.030A	SLine / MLine	18
GR02.031A	SLine / MLine	37
GR-XL02.033	XLine	94

Dimensions



Item no.	A	B [mm]	C [mm]	D [mm]	E [mm]	F [mm]	G [mm]	H [mm]	K [mm]
GR02.030A	M5	16	32	12	6.5	5	17	5	4.5
GR02.031A	G1/8	25	38	15	6.5	5	20	8	5.6
GR-XL02.033	G1/4	30	60	20	10	10	29	11	8.8