



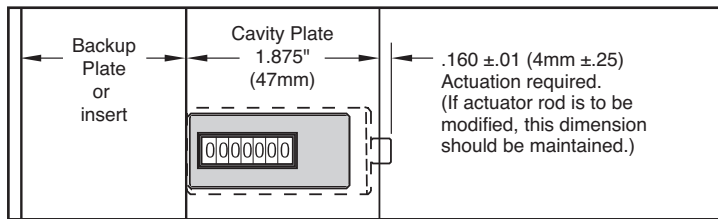
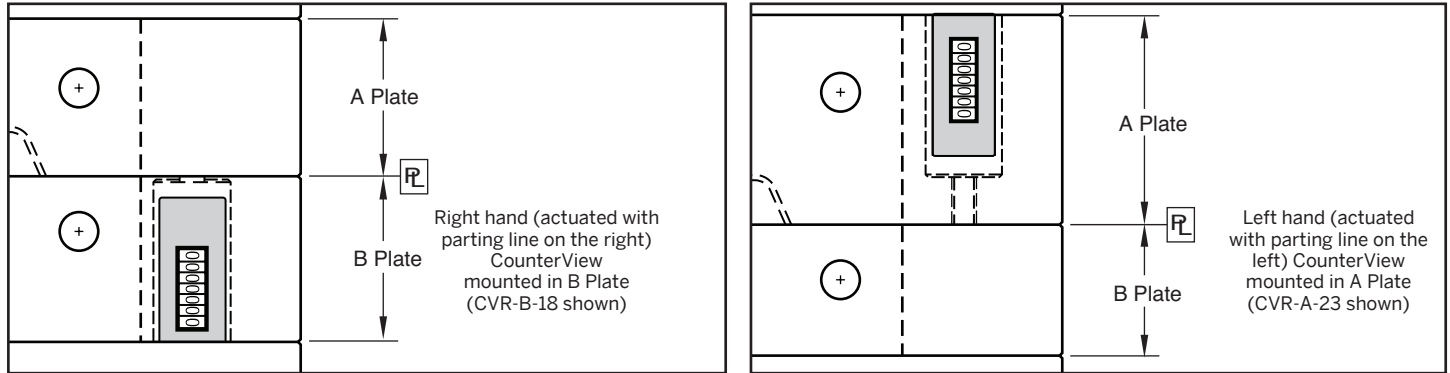
COUNTERVIEW® R-SERIES

Progressive's CounterView positively monitors mold activity, validates process monitoring data, and assists mold maintenance procedures.

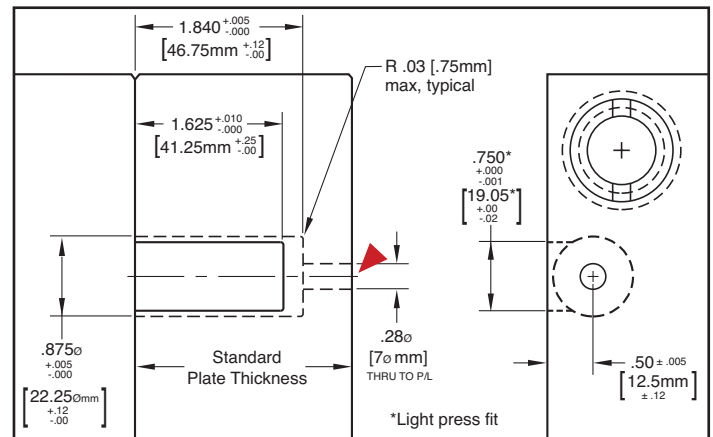
- Maximum operating temperature is 250 °F (120 °C)
- Counter: Non-resettable mechanical, 7-digit



M Glass-filled Nylon housing



The R-Series CounterView can be installed in the A or B plates with a minimum thickness of 1.875" (47mm). Larger plates utilize a threaded rod (included with each) that is pre-machined to the appropriate length for standard plate thicknesses to provide consistent actuation.



▶ CAD insertion point

PARTING LINE AT RIGHT

Operator Side: Movable Half / B Side



Inch Standard

CATALOG NUMBER	Nominal Plate Thickness
CVR-B-18	1.875
CVR-B-23	2.375
CVR-B-28	2.875
CVR-B-33	3.375
CVR-B-38	3.875
CVR-B-43	4.375
CVR-B-83	8.375

Metric Standard

CATALOG NUMBER	Nominal Plate Thickness
CVR-B-56	56
CVR-B-66	66
CVR-B-76	76
CVR-B-96	96
CVR-B-116	116
CVR-B-196	196

PARTING LINE AT LEFT

Operator Side: Stationary Half / A Side



Inch Standard

CATALOG NUMBER	Nominal Plate Thickness
CVR-A-18	1.875
CVR-A-23	2.375
CVR-A-28	2.875
CVR-A-33	3.375
CVR-A-38	3.875
CVR-A-43	4.375
CVR-A-83	8.375

Metric Standard

CATALOG NUMBER	Nominal Plate Thickness
CVR-A-56	56
CVR-A-66	66
CVR-A-76	76
CVR-A-96	96
CVR-A-116	116
CVR-A-196	196

Each R-Series CounterView includes the actuator. All except CVR-B-18 and CVR-A-18 require attachment of the actuator rod to the threaded CounterView unit.