



Suction fingers – adjustable



Product notes

- > Adjustable head for mounting and aligning vacuum cups with part contours
- > Angle adjustment +/- 100°
- > Up to 50 % less weight compared to standard version
- > Heads are interchangeable with the heads of elbow arms GR02.240 - GR02.242, GR02.250 - GR02.252, GR02.260 - GR02.262

Technical data

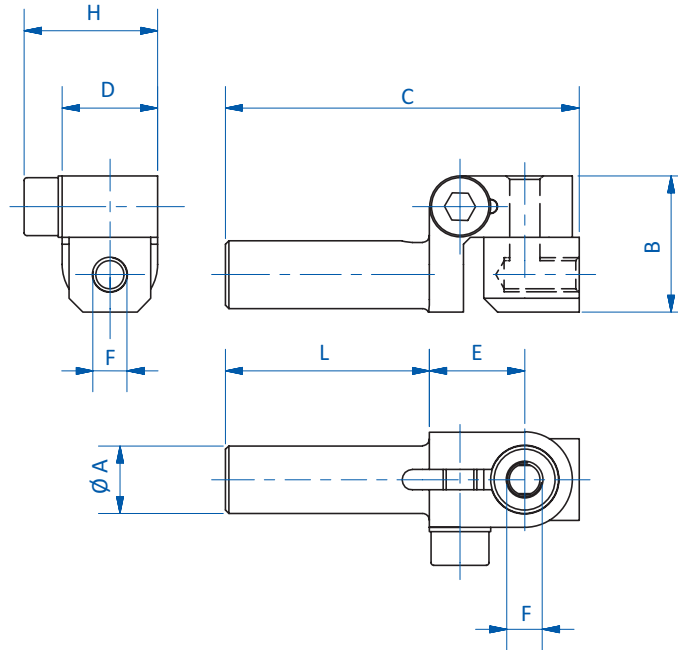
| Item no. | Weight [g] |
|----------|------------|
| GR03.240 | 15 |
| GR03.241 | 18 |
| GR03.242 | 21 |
| GR03.250 | 29 |
| GR03.251 | 37 |
| GR03.252 | 46 |
| GR03.260 | 57 |
| GR03.261 | 71 |
| GR03.262 | 86 |



Gripper arms | Suction fingers

Suction fingers – adjustable

Dimensions



| Item no. | Ø A [mm] | F | B [mm] | C [mm] | D [mm] | E [mm] | H [mm] | L [mm] |
|-----------------|----------|------|--------|--------|--------|--------|--------|--------|
| GR03.240 | 10 | M5 | 20 | 52 | 14 | 14 | 19.6 | 30 |
| GR03.241 | 10 | M5 | 20 | 82 | 14 | 14 | 19.6 | 60 |
| GR03.242 | 10 | M5 | 20 | 112 | 14 | 14 | 19.6 | 90 |
| GR03.250 | 14 | G1/8 | 28 | 71 | 18 | 16 | 23.6 | 45 |
| GR03.251 | 14 | G1/8 | 28 | 116 | 18 | 16 | 23.6 | 90 |
| GR03.252 | 14 | G1/8 | 28 | 156 | 18 | 16 | 23.6 | 130 |
| GR03.260 | 20 | G1/4 | 33 | 82 | 24 | 19 | 29.6 | 50 |
| GR03.261 | 20 | G1/4 | 33 | 132 | 24 | 19 | 29.6 | 100 |
| GR03.262 | 20 | G1/4 | 33 | 182 | 24 | 19 | 29.6 | 150 |