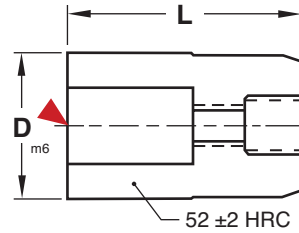
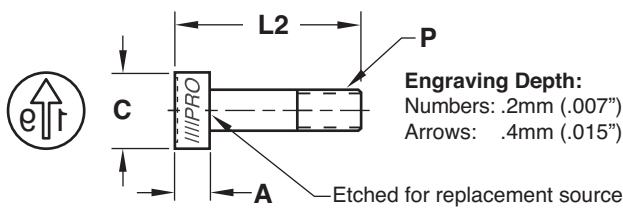


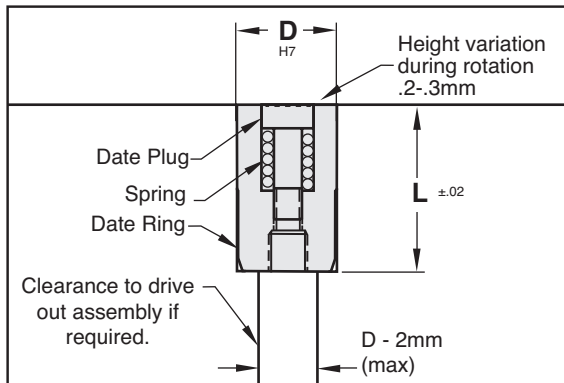


DATE STAMPS

20 SERIES: 20MM LENGTH



Installation Guidelines:



Maximum mold temperature: 285° F (140° C)

For other date plugs, modify catalog number for the year required. Example: DLP06-20.
Plugs include springs and replacements are available.

PLUGS



M 420 Stainless Steel **H** 50-54 HRC

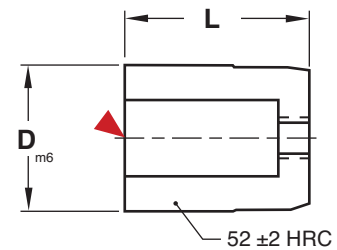
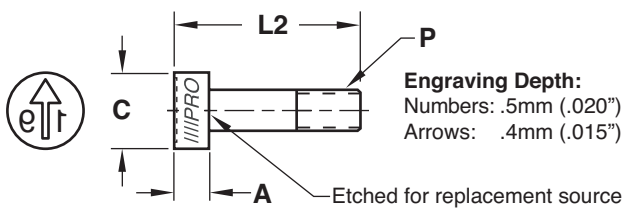
CATALOG NUMBER	C	A	L2	P	ARROW ONLY
DLP06-19	3.1	3.0	13	M1.6x0.20	DLP06-AO
DLP08-19	4.6	4.0	14	M2.5x0.35	DLP08-AO
DLP10-19	4.6	4.0	14	M2.5x0.35	DLP10-AO
DLP16-19	8.2	3.5	14	M4x0.35	DLP16-AO

RINGS



CATALOG NUMBER	D	L
DL06	6	20
DL08	8	
DL10	10	
DL16	16	

D SERIES: DEEP ENGRAVING



PLUGS

M 420 Stainless Steel **H** 50-54 HRC

CATALOG NUMBER	C	A	L2	P	ARROW ONLY
DCP10D-19	5.2	3.0	12	M2.5x0.35	DCP10-AO
DCP12D-19	6.2	3.0	14	M3x0.35	DCP12-AO
DCP16D-19	8.2	3.5	14	M4x0.35	DCP16-AO
DCP20D-19	11.0	4.5	16	M4x0.35	DCP20-AO

For other date plugs, modify catalog number for the year required.
Example: DCP16D-20. Plugs include springs and replacements are available.

RINGS

CATALOG NUMBER	D Ring Diameter	L
DC10-D	10	12
DC12-D	12	14
DC16-D	16	14
DC20-D	20	16

CAD insertion point