

VALIANT

4L ASH VACUUM

FIR275

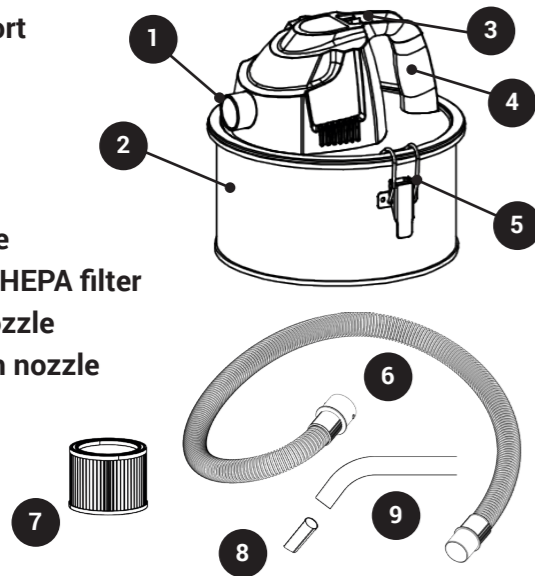
APPLICATION

The Valiant ash vacuum is intended for vacuuming cold ashes and fine dust, as well as particles of debris from open fire grates, solid fuel stoves, fire pits or barbecues.

The appliance is not suitable for vacuuming liquids or glowing embers. Professional use such as vacuuming/blowing heating boilers, oil-burning ovens, micro fine dusts such as soot or cement dust, materials or dusts that are combustible, explosive or hazardous to health are also prohibited.

Valiant will not be held responsible for injuries resulting from use that does not comply with the directions, or from incorrect use.

1. Suction port
2. Tank
3. Switch
4. Handle
5. Metal clip
6. Metal hose
7. Washable HEPA filter
8. Crevice nozzle
9. Aluminium nozzle



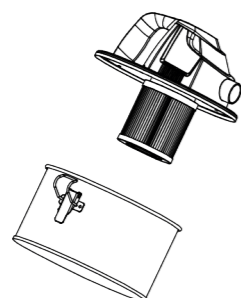
DESCRIPTION OF OPERATION

The ash vacuum cleaner is fitted with a robust metal container with a lid assembly. The vacuum set comprises a flexible metal-lined suction hose and an aluminium inlet tube. The appliance must not be operated without the HEPA filter.

ASSEMBLY

To avoid any risk of electrical shock, always remove the mains plug from the electrical supply before any maintenance is carried out on the appliance.

1. Remove the appliance and accessories from the packaging before use.
2. Loosen the catch and remove the lid of the appliance.
3. Attach the filter to the bottom of the lid. This is simply a push fit.
4. Re-attach the lid to the appliance, ensuring it is secured by the catch and clipped properly into place.
5. Insert one end of the push fit flexible hose into the main body of the appliance. Attach the opposite end to the aluminium tube.



OPERATING INSTRUCTIONS FOR VACUUMING

- Place the appliance on a level surface.
- Clean filter before and after every use to ensure maximum performance and service life.
- When vacuuming, protect delicate surfaces and do not place the appliance on heat sensitive floors.
- Always use the aluminium suction tube for vacuuming. Hold the suction tube at a distance of approx. 1cm above the ash, use the plastic crevice nozzle to reduce chance of marking surfaces.
- Vacuum only cooled ash (less than 40°C).
- Always use the carry handle for transporting the appliance.
- The metal container should never be filled to more than halfway, so that the filter is kept clear.
- Clean the filter (see 'cleaning/maintenance') if the suction performance deteriorates, as well as each time the container is emptied, to maintain optimum performance.

CLEANING

Clean the appliance after each use.

Wear protective mask and eyewear to protect against dust and fine particles.

- Carry out cleaning outside in order to avoid mess.
- Take off the lid assembly and empty the metal container.
- Clean the metal container with a brush or slightly dampened cloth to keep dust down.
- Remove the filter which is a pushfit, it may be tight, so gently twist to break the seal if required.
- Tap the filter against the inside of a wheelie bin or similar to loosen and release dust and particles. Refit by pressing back into position.
- Replace the filter if it is perforated or damaged.
- If the filter is heavily ingrained, wash through under a tap and allow to dry fully and naturally before refitting in the appliance - Never place a damp filter in the machine this will instantly clog and render it useless.
- After refitting filter, run the vacuum for a few seconds outside as loosened dust may exhaust from the machine

STORAGE

- Store the appliance in a dry place, ensuring the container is empty.

NOTES ON SAFETY

The information contained in these operating instructions must be observed. In addition, legal safety and accident prevention regulations must also be observed.

Caution: when using the appliance, observe the following basic safety measures in order to protect against the risks of electrical shock, injury and fire:

- Ensure that the mains cable is not damaged by being pulled over sharp edges, by snagging, or by pulling on the cable.
- Before use, check the power cable for damage and ageing. Do not use the appliance if the cable is damaged or worn to avoid electric shock.
- If the power cable for this appliance is damaged, remove from use and dispose of as electrical waste at a licensed recycle facility .
- Switch the appliance off and disconnect the main plug when the machine is not in use, before opening, for all maintenance and cleaning work or if the mains cable is damaged or tangled up.
- Do not use the cable to pull the plug out of the socket. Protect the cable from heat, oil, and sharp edges.
- Make sure that the mains supply voltage corresponds with the information on the rating plate.
- Only plug the appliance directly into an appropriate 13a socket, not via an adaptor.
- The appliance must only be connected to a mains socket which is protected at the fuse board via a residual-current circuit breaker

(RCD), with a rated leakage current of not more than 30 mA.

- Ensure that the appliance is assembled correctly and that the filter and spacer plate is in the correct position.
- Do not expose the appliance to rain. Do not use the appliance in a damp or wet environment.
- Avoid accidental starting. Ensure that the switch is off when plugging into the socket.

TO AVOID ACCIDENTS AND INJURIES

- Keep the appliance away from children - and pets.
- The appliance must not be used by people (including children) with limited physical, sensory or mental faculties or who lack the necessary experience and/or knowledge, unless they are supervised and instructed by a person responsible for safety.
- Never leave the plugged in appliance unattended at the workplace.
- People and animals must not be vacuumed with the machine.
- Nozzles and suction tubes must not reach head level whilst in use. Personal injury could occur.
- Do not vacuum up substances or dusts that are hot, glowing, combustible, explosive or hazardous to health. This includes hot ashes, petrol, solvents, acids or caustic solutions. Personal injury could occur due to fire, explosion or respiratory incident.
- Do not vacuum up liquids, soot or plaster and cement dust. You could damage the appliance.
- The vacuum base must not exceed a temperature of 40°C. Material that appears cool from the outside may still be hot inside. Hot vacuumed material can re-ignite in the air stream. Furthermore, the appliance can be damaged. In the event of a rise in temperature, switch off the appliance and disconnect at the plug. Place the appliance outside and monitor it as it cools.

TROUBLESHOOTING

- If the goods have arrived in a damaged condition, you should contact your supplier.
- In the unlikely event that parts are missing or the product is not working as described, contact Valiant at the address below so that your problem can be dealt with swiftly and with fewer delays.
- If the hose becomes blocked, switch off, disconnect from mains and remove the hose before attempting to unblock.
- If the appliance suffers deterioration in suction, refer to the cleaning section of these instructions as the appliance or filter may need maintenance.
- For more trouble shooting and tips, visit our website: www.simplyvaliant.com.
- For technical support contact Valiant by telephone or email (contact details are listed below).

WARRANTY

- The appliance is guaranteed for materials and workmanship for a period of 12 months from purchase.
- Retain your proof of purchase; you will need to provide this, the model and the batch number in any correspondence.
- If you experience a problem with your Valiant product, in the first instance contact your retailer who will be able to assist.
- Use only replacement parts and accessories supplied and recommended by the Valiant service department.
- Replacement parts are available directly from Valiant.
- The use of non-genuine parts will result in immediate invalidation of the warranty.
- This limited warranty does not cover normal wear and tear or damage caused by accident or misuse.
- Use of this product is entirely at the consumer's risk.
- This does not affect your statutory rights.

RETURNS

- Returned products will only be processed with prior verbal or written agreement with Valiant.
- Valiant will not accept postage or other costs associated with returned or faulty goods.

- If goods are found to have been misused, any repair costs will be passed to the customer if any repair or replacement is required.
- All packaging materials and cardboard are recyclable.
- This appliance must not be disposed of in general waste and should be treated as electrical goods. The appliance will be accepted at your local recycling centre which will reduce the impact on the environment and minimise landfill.

SPECIFICATIONS

Capacity: 4 litres
 Mains Cable: 2.5m UK plug
 Power: 600w
 Voltage: 220-240v 50Hz
 Flexible hose: 1m
 Inlet tube: 20cm
 Product weight: 1.8kg

We reserve the right to update and amend the product design and manual, which are subject to change without further notification.

CONTACT

Valiant is a trading name of The Accessory Outlet Ltd

Solution House, Sandon Road, Therfield,
 Hertfordshire, SG8 9RE, UK
 Tel: +44 (0)1763 284184
 Email: contact@simplyvaliant.co.uk
www.simplyvaliant.com

