



CYCLEVISION



INSTRUCTIONS AND SPECIFICATIONS

ITEM: FANG MOUNT®
PART NUMBER: CVFM-01-01

Revision 2 - Instruction Date 13-04-20

FANG MOUNTS® Designed, and Imported by Cyclevision Pty Ltd,
Suite 23/25 29 Grafton Street, Cairns 4879, Queensland, Australia
Post Office box 438 Brisbane, 4000, Queensland Australia

For further information, enquiries, problems and/or feedback please use either of the below email addresses and a staff member will attend to your request as soon as possible
admin@cyclevision.com.au, sales@cyclevision.com.au phone +61 (0)475931808

Computer modelling: - Shape Labs, Level 3, Z1, The Works, 34 Parer Place, Kelvin Grove 4059, Brisbane, Australia

Manufactured: - TSC Limited, 31 Centre road, Gold hill industrial park, Ping Di Town, Shen Zhen City, Guangdong, China

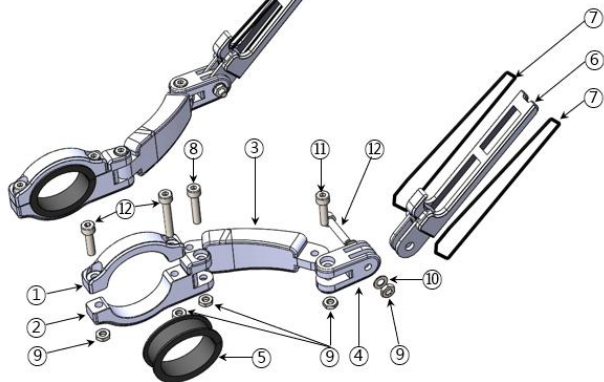
OVERVIEW

FANG MOUNTS are designed to be installed facing forward of the bicycle handlebars. Fully articulated arms and quadruple rubber bindings ensure the FANGS securely lock and support any size smartphone, cycle computer or cycling device aid 'forward' of the bicycle handlebars.

Fully articulated arms allow you to move and separate the arms together or individually inwards, outwards, up, down, or to the side to properly secure your device, as you wish.

Made from super strong glass filled synthetic polymers, FANGS are tough, flexible extremely adaptable and will easily accommodate any size smartphone. FANGS have been especially designed to unlock the Cyclevision EDGE helmet's inspirational ability to live stream rearwards approaching traffic, turning your smartphone screen into an electronic rear vision mirror. In the event of a tumble FANGS fold up and out of the way preventing injury.

DESCRIPTION AND PARTS



ITEM NUMBER	PART NUMBER	DESCRIPTION	QUANTITY PER ARM
1	JD-1448015Z	LOWER HANDLEBAR MOUNT	1
2	JD-1448025Z	UPPER HANDLEBAR MOUNT	1
3	JD-1448035Z	RESERVABLE EXTENSION BRACKET	1
4	JD-1448045Z	PHONE MOUNT PIVOT	1
5	JD-1448053Z	RUBBER STRIP, SHORE A90	1
6	JD-1448052Z	VERTICAL SUPPORT ARM	1
7	JD1448060Z	O-RING – NITRILE 70 DURO 2mm x 57mm	2
8	AS-1420-M5x25-N G316	HEX HEAD SCREW	1
9	AS 1112.4 AB – M4N	NYLOCK NUT	5
10	AS 1237.1 S- 4	WASHER	2
11	AS-1420-M5x16-N G316	HEX HEAD SCREW	1
12	AS-1420-M5x20-N G316	HEX HEAD SCREW	3

Replacement O-rings and stainless-steel screws can be purchased from most automotive, hardware, and fastener stores, or direct off the internet, the sizing & Durometer hardness is indicated (item 7) same for screws & nuts, specification and sizes indicated 8, 9, 10, 11, 12

Your Fangs come loosely assembled in the packing box, however you will need to remove the lower handlebar mount (2) from the upper handlebar mount (1) in order to place them either side of the bicycle handlebars.

The following instructions assume all parts are in a state of complete disassembly, steps may be omitted depending on the state of disassembly

Remember the rules of the road, and that it is an offence by law in some states and countries to use your mobile phone whilst riding. Please ensure you set the phone in the correct position and edit phone settings before you start your ride, that way there is no need to touch your phone while you are cycling

SETUP & ASSEMBLY INSTRUCTIONS

1. Use 5mm alloy key and separate upper and lower handlebar mounts ①②
2. Wrap upper and lower handlebar mounts around the bicycle handlebars, directly either side of the central handlebar mounting stem
3. Insert x2 hex head allen key screws ⑫ through the upper mount ① and lower mount ②
4. Insert nylock nuts ⑨ into lower housing nut lock cavity and turn screws ⑫ to engage nuts ⑨ (do not fully tighten at this time)
5. **NOTE: Fangs have been designed for use on 31.6 mm standard size road bike handlebars, use x2 spacers ⑤ inside upper & lower mounts ① & ② for handlebars that are smaller in size i.e. 25mm to 26mm in diameter, as found on some touring and trail bikes**
6. Insert reversible extension bracket ③ into the lower handlebar mount forward support boss ② with the concave shape of the reversible extension bracket facing away from the centre of the handlebars (curve towards the outside)
7. Insert hex head allen key screw ⑧ through the lower handlebar mount forward support boss and through the inner pivot arm spigot of the reversible extension bracket ③
8. Install nylock nut ⑨ into lower housing nut lock cavity and turn screw ⑧ to engage nut (do not fully tighten at this time)
9. Insert phone mount pivot ④ over the outer spigot of the reversible extension bracket with the twin gaps facing outwards
10. (ensure the rounded side of the phone mount pivot ④ is facing up to accommodate the round hex head allen key screw and the six-sided nut lock cavity is facing down)
11. Install hex head allen key screw ⑪ through the phone mount pivot ④
12. Insert nylock nuts ⑨ into lower nut lock cavity and turn screws ⑪ to engage nuts ⑨
13. Install x2 O-rings ⑦ over each of the inner and outer sides of vertical support arm ⑥
14. (ensure the two O-rings ⑦ sit inside the spigot arm gap of the vertical arm ⑥)
(Note: the O-rings will extend outwards from each side of the lower portion of the vertical support arm lock (hook) out along the arm and onto the outer central recess of the arm)
15. Install vertical support arm lower spigot into the twin gaps of the phone mount pivot ④
16. Install Hex head Allen key screw (with one washer ⑩ under the head, through the phone mount pivot bore engaging the lower spigot bore of the vertical support arm
17. Install washer ⑩ under the nut ⑨
18. Insert nylock nuts ⑨ into lower housing nut lock cavity and turn screws ⑫ to engage nuts ⑨ (do not fully tighten at this time)
19. Position the upper and lower handlebar mounts ① and ② hard against the larger portion of the handlebars directly either side of the handle bar stem.
20. Set the angle of the Fangs so the upper and lower handlebar mounts are equal horizontal (or as desired) and tighten both hex head allen key screws ⑫ until the upper and lower handlebar mounts are firmly secured to the handlebars
21. Tighten screws ⑧ and ⑪ so the reversible extension bracket ③ and phone mount pivot ④ are secured, but still moveable under firm pressure
22. Hold nut ⑨ on the lower portion of the vertical support arm and tighten hex head allen key screw ⑫ until the vertical support arm is secured but still moveable
23. (do same for opposite arm)
Your Fangs are now ready for phone insertion
24. Place phone or device into the lower locks of the vertical support arms, secure with x4 O-rings
25. Adjust the pivot angles of the reversible extension bracket ③ and/or the Phone Mount Pivot ④ inwards, outwards or sideways to meet your specific Phone or device dimensions
(Note: the preferred mounting will be about a 15mm to 20mm from either side/end of your smartphone)
26. Set your Phone at your preferred angle of viewing by moving the Phone vertical support arms ⑥ up or down
27. When slipping the O-rings up and over your phone take care to avoid the phone function buttons on the side of your phone and your good to go
(Note: further information and FANG MOUNT set up can be found on Cyclevision Website)