



Congratulations!
You are the new owner of TTRacing Titus!

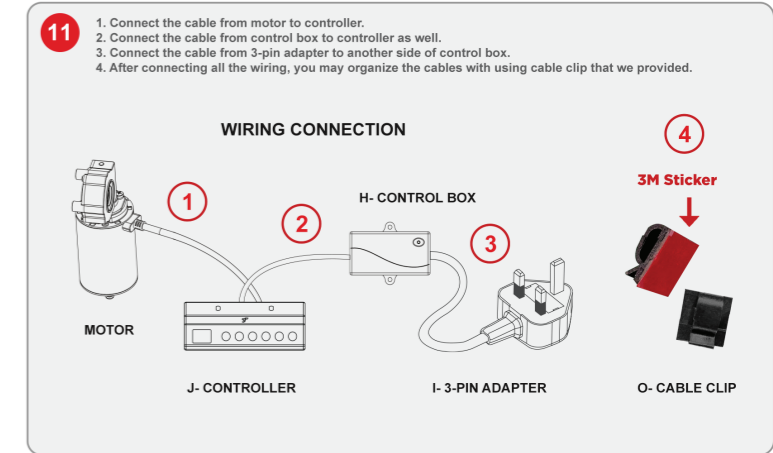
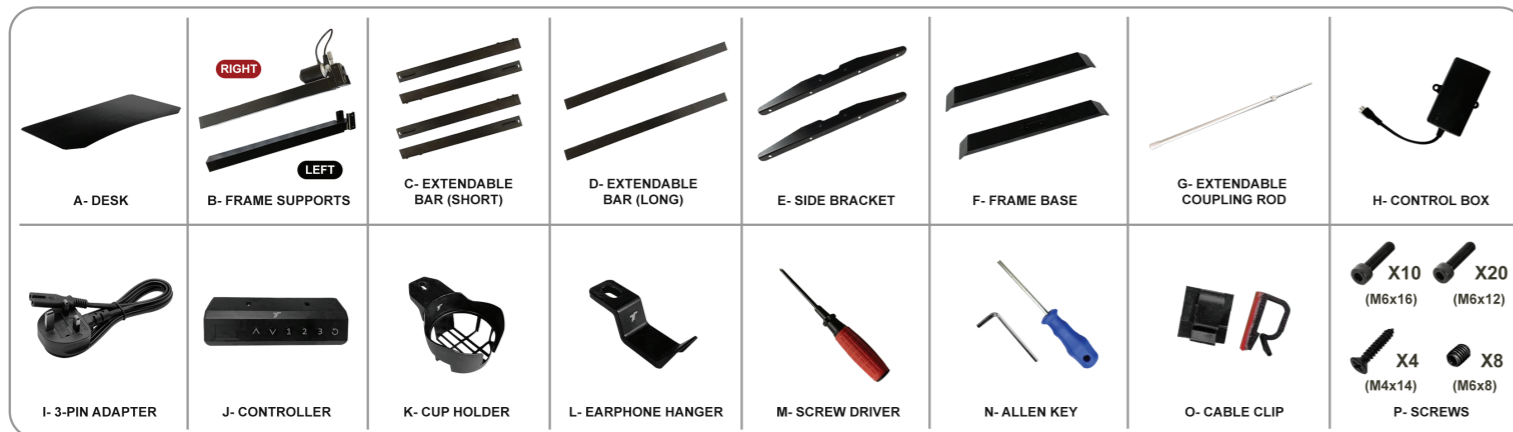
Flip to the back to get started!
Thank you for your support!

To reduce the risk of death, serious injury or property damage, please read and follow the safety information and provided instructions when assembling this product. Do not change or replace the components and accessories provided.

ATTENTION

- For indoor use only.
- You are advised to wear protective gloves when assembling the desk.
- Do not tighten bolts fully until you have completed assembly.
- It is highly recommended that you assemble the desk on a carpeted floor surface so as to prevent scratches.
- It is highly recommended that you adjust the desk to its lowest height before moving.
- Before lifting the desk, check if surroundings are clear and make sure desk power cord is able to move freely as the desk moves up and down.
- Do not spray cleaning solutions directly onto table system, clean only with a dry or slightly damp cloth.
- Do not open electrical components.
- Keep all electrical components away from water and high humidity.
- Do not modify the plug provided with the product.
- To disconnect, turn off all the power supply before removing the adapter from the outlet.
- Check the desk parts on a monthly basis to ensure they are still functioning correctly.

WHAT'S IN THE BOX



CONTROLLER INSTRUCTION



LIFT UP OR DROP DOWN

- When the "UP" or "DOWN" button is long pressed, the desk will move up and down until it is released or reaches the lowest/highest point.
- When short press the "Up" or "Down" key, the desk will move a short distance accordingly.

POSITION MEMORY SETTINGS & OPERATION

- 3 position memory can be stored.
- When moving to a specific position, press and hold the "1 / 2 / 3" button until the digital number flashes, and the current height is stored to the corresponding label successfully.
 - Short press the "1 / 2 / 3" button, the indicator display will show the height of the position memory for 2 seconds, and the desk will automatically move to the height accordingly. During operation, any button can stop the operation.

ZERO POSITION RESET

Long press "RST" for 3 seconds and wait for the indicator display to show "- -", then press the down button to enter the reset mode, the desk will automatically move downwards and upwards to reach the highest and lowest positions. After the end, the desk will automatically move to a fixed position, and the zero position is successfully reset.

LOWEST POSITION SETTING

- Move the desk to the position to be set, press the "RST" + "down" buttons for 5 seconds, and "-d o" is displayed to indicate that the lowest position is stored successfully. When moving to the lowest point, the indicator display will show "- L o".
Method A: Repeat the 'zero position reset' step, the system will automatically remove it.
Method B: Move the desk to the lowest position until indicator display show "- L o", press and hold the "RST" + "DOWN" buttons for 5 seconds, and the indicator display will show "- d o" which means the cancellation is successful.
- To remove the memory record: Method A: Repeat the 'zero position reset' step, the system will automatically remove it.
Method B: Move the desk to the lowest position until indicator display shows "- L o", press and hold the "RST" + "DOWN" buttons for 5 seconds, and the indicator display will show "- d o" which means the cancellation is successful.

HIGHEST POSITION SETTING

- Move the desk to the position to be set, press the "RST" + "up" buttons for 5 seconds, and "-H I" is displayed to indicate that the highest position is stored successfully. When moving to the highest point, the indicator display will show "- H I".
Method A: Repeat the 'zero position reset' step, the system will automatically remove it.
Method B: Move the desk to the highest position until the indicator display shows "- H I", press and hold the "RST" + "UP" buttons for 5 seconds, and the indicator display will show "- H I" which means the cancellation is successful.
- To remove the memory record: Method A: Repeat the 'zero position reset' step, the system will automatically remove it.
Method B: Move the desk to the highest position until the indicator display shows "- H I", press and hold the "RST" + "UP" buttons for 5 seconds, and the indicator display will show "- H I" which means the cancellation is successful.

LOCK & UNLOCK SETTING

Lock: Press and hold "1" + "2" for 5 seconds, when the indicator display shows "L", it means that the setting is locked and cannot be lifted or lowered.
Unlock: Press and hold "1" + "2" for 5 seconds, when the indicator display shows from "L" to normal digital display, it means the setting has been unlocked.

STAND & SIT REMINDER (COUNTDOWN MODE)

- T30 = 30 minutes, T45 = 45 minutes, T60 = 60 minutes
- Start the countdown: Short press "RST" and the indicator display will show T30/T45/T60 in turn, and the countdown will start.
 - Exit countdown: Method A: Short press "RST", the display will display numbers.
Method B: When the countdown is up, the indicator display will show "C H r" for 1 minute. Press any button to stop the timing and exit.
Method C: Without any operation, it will automatically exit the countdown mode after 3 consecutive reminders every 5 minutes.

RESTORE FACTORY DEFAULT PARAMETERS

Press and hold "1" + "3" for 5 seconds, the indicator display will show "C L r", which means the parameter recovery is successful.

ERROR CODE DEFINITION

ERROR CODE	DESCRIPTION	SOLUTION
E01	Motor not connected	Press the up or down button again, if it still exists, please check the connection of the motor.
E02	Motor overcurrent	Press the up or down button again, if it still exists, please replace the motor or reduce the load.
E03	Motor Hall failure	Press the up or down button again, but if it still exists, please check the connection or replace the motor.
E04	Abnormal main power	It cannot be fixed after power failure, replace the power supply.
E05	Abnormal motor current	Please contact customer service department for advice.
E06	Motor power device is broken	Please contact customer service department for advice.
E08	Temperature warning	Wait for the temperature to cool down.
E09	Motor stall	Press the up or down button again, if it still exists, please replace the motor or reduce the load.
RST	Unexpected power down	Reduce the load or check if the power cable is loose.

