



Your agricultural parts connection

3-Point Post Hole Digger



Operator's Manual

For Models:

400 (24-0361)

650 (24-0362)

1000 (24-0318)

1500 (24-0337)



Product registration form included in this booklet. Register your product today.

Part # 29-019
(for replacement manual)

TABLE OF CONTENTS

Welcome	4
Safety First!.....	5
General Safety Information.....	6
Additional Safety Information and Best Practices.....	7
Safety Decals.....	8
Parts List Model 1500.....	9
Parts List Model 1000.....	10
Parts List Model 650.....	11
Parts List Model 400.....	12
Assembly Instructions	13-16
Operating Instructions	17
Maintenance & Specifications	18
Warranty	19
Registration.....	21

Welcome!

Thanks for buying an AgKNX 3-point post hole digger! We design our products to meet the high standards of our industrial and commercial clients, with ease-of-use that's aimed at homeowners and do-it-yourselfers. That means that our products are tough enough to meet the rigorous demands of the industry, but designed for non-professionals to learn to use. We proudly provide technical support and service for all of our products. If you have questions, technical issues, or feedback, we want to know! For expert service, contact us directly before you return to the dealer:

customerservice@tooltuffdirect.com

720-437-7640

We warranty all AgKNX parts for manufacturing defects: 3 years from date of purchase for gearboxes, and 1 year for all other parts. Register your product today.

For warranty claims, parts replacement, repairs, and questions, record the following information below:

Model No. _____

Serial No. (found on boom) _____

Date of Purchase _____

Place of Purchase _____



The information in this **Operator's Manual** is critical to the safe operation of the device. For safety, better performance, and a longer service life with your 3-pt. post hole digger, read and understand this manual. We have included relevant information about basic operation and maintenance that will help you keep your post hole digger in serviceable condition and maximize the product's useful life. Consider this manual a permanent part of the device, keep it with the product, and include it with the product if you sell it. Replacement manuals available upon request (Part #29-019).

Notice:

The gearbox unit is shipped without lubricant. **DO NOT** attempt to operate the device without filling it with 80W-90 gear oil: model 1500 gearboxes take approximately 75 fl.oz. (2.25 liters) of oil, all other models take 50 fl.oz. (1.5 liters).
(See: Step 1, pg. 13, below.)

3-Point Post Hole Digger



Safety First!



This safety alert symbol identifies important safety messages in this manual. Failure to follow this important safety information may result in serious injury or death.

Use common sense and stay safe!

Notice:

This "Notice" symbol is used throughout this manual to identify situations in which damage to equipment may occur; physical harm and bodily injury is possible.



WARNING: Read and thoroughly understand all instructions and safety information before assembling or operating this post hole digger. Failure to do so may cause serious injury or death. Do not allow anyone to operate this post hole digger who has not read this manual. As with all power equipment, a post hole digger can be dangerous if assembled or used improperly. Do not operate if you have doubts or questions concerning safe operation.

If you have any questions or doubts about the safe operation of this equipment, contact our customer service department: Tel: 720-437-7640; E-mail: customerservice@tooltuffdirect.com



INTENDED USE: Do not use the post hole digger for any purpose other than digging post holes in suitable soil when connected to the 3-point linkage system and power take off (PTO) of a tractor. Any other use is unauthorized and may result in serious injury or death.



PERSONAL PROTECTIVE EQUIPMENT: When operating this equipment it is essential that you wear safety gear including safety glasses, steel toe shoes, and well fitting gloves (no loose cuffs or draw strings).

DO NOT wear loose clothing or jewelry that can be caught by moving parts of the post hole digger, including the auger and driveline! Keep clothing and hair from all moving parts when operating.



GENERAL SAFETY INFORMATION



GENERAL SAFETY



Failure to follow the warnings, cautions, assembly and operation instructions below and throughout this manual may result in serious injury or death.



SERIOUS INJURY OR DEATH WILL RESULT FROM ENTANGLEMENT WITH MOVING PARTS.



DO NOT OPERATE THE POST HOLE DIGGER WHILE ANYONE IS IN CONTACT WITH ANY PART OF THE IMPLEMENT, INCLUDING THE PTO DRIVELINE AND AUGER. KEEP ALL PEOPLE AND PETS A MINIMUM OF 25 FEET AWAY FROM THE WORK AREA WHEN OPERATING THIS POST HOLE DIGGER.



DO NOT OPERATE THE POST HOLE DIGGER WHEN UNDER THE INFLUENCE OF ALCOHOL, DRUGS, OR MEDICATION.



DO NOT ALLOW A PERSON WHO IS TIRED OR OTHERWISE IMPAIRED OR NOT COMPLETELY ALERT TO OPERATE THE POST HOLE DIGGER.



DO NOT PERMIT ANYONE THAT HAS NOT READ AND UNDERSTOOD THE OPERATOR'S MANUAL TO USE THIS EQUIPMENT. DO NOT PERMIT CHILDREN TO OPERATE THIS EQUIPMENT AT ANY TIME.



DO NOT ATTATCH THE POST HOLE DIGGER TO THE TRACTOR WHILE THE ENGINE RUNNING.



DO NOT MANUALLY DEPLOY THE AUGER, MANUALLY POSITION OR MANUALLY FORCE THE AUGER INTO THE GROUND.



ALWAYS OPERATE THIS POST HOLE DIGGER FROM THE TRACTOR SEAT. TURN OFF TRACTOR ENGINE BEFORE LEAVING THE SEAT OF THE TRACTOR.



ALWAYS MAKE SURE THAT ALL SAFETY SHIELDS ARE IN PLACE AND SECURELY FASTENED. DO NOT OPERATE IF ANY SHIELDS ARE MISSING; CALL FOR REPLACEMENTS.



MAKE SURE THAT THE TRACTOR IS IN NEUTRAL OR PARK AND THAT THE BRAKE IS SET BEFORE DEPLOYING THE POST HOLE DIGGER.



DO NOT MOVE OR DRIVE THE TRACTOR WHILE THE POWER TAKE OFF (PTO) IS ROTATING.



ALWAYS CALL AND CHECK FOR BURIED ELECTRICAL CABLES AND GAS LINES BEFORE YOU DIG. CONTACT WITH BURIED ELECTRICAL OR GAS LINES COULD RESULT TO DEATH THROUGH ELECTROCUTION OR EXPLOSION.

ADDITIONAL SAFETY INFORMATION

Notice: The information below is provided for better operation and extended working life with your 3-pt. post hole digger. Follow the guidelines below for best results. If not followed your safety could be put at risk.

- **READ YOUR TRACTOR'S OPERATION MANUAL** concerning the proper attachment and use of 3-point equipment and safety.
- **ALWAYS PERFORM MAINTENANCE** such as lubrication, adjustments, and repairs **with the tractor engine turned off, the PTO disengaged, and the auger point resting on level ground.**
- **NEVER GO UNDERNEATH EQUIPMENT THAT IT IS NOT BLOCKED AND SECURED FOR ANY REASON.** Mechanical failures, hydraulic leak-down, and movement of control levers can cause unexpected movement of equipment which can result in severe injury or death.
- **DO NOT EXCEED THE 540 RPM PTO OPERATING SPEED.**
- **NEVER ENGAGE THE PTO WHILE THE AUGER POINT IS MORE THAN 6 INCHES ABOVE GROUND LEVEL.** Operating the post hole digger in an elevated position may cause the PTO-driveline u-joints to bind, resulting in equipment damage and operator injury.
- **IF THE AUGER BECOMES STUCK DO NOT ATTEMPT TO PULL IT OUT USING THE TRACTOR'S LIFT ARMS.** Damage to the digger boom and gearbox may occur. Turn off the tractor, disconnect the auger from the gearbox, and manually remove a stuck auger from the hole by rotating it backwards with a large wrench. Store wrench before recommencing operation.
- **TURN OFF THE POST HOLE DIGGER IMMEDIATELY IF A ROCK OR OTHER OBSTACLE IS ENCOUNTERED** during operation (causing a stall) to prevent damage to the gearbox and possible operator injury.
- **IF THE SHEAR BOLT BREAKS, DISENGAGE THE PTO IMMEDIATELY.** Shear bolts could become welded to the input shaft of the driveline if left running after being sheared.
- **ALWAYS REPLACE SHEAR BOLTS WITH THE CORRECT SHEAR BOLT SIZE AND GRADE.** Never use a shear bolt that is longer, stronger, or larger than what is specified in the operator's manual for the specific post hole digger model.
- **CHECK THAT THE AUGER POINT AND CUTTING EDGES ARE IN SERVICABLE** condition prior to use. Remove, sharpen, and/or replace cutting edges as needed before use.
- **ALWAYS CALL AND CHECK FOR BURIED ELECTRICAL CABLES AND GAS LINES BEFORE YOU DIG.** CONTACT WITH BURIED ELECTRICAL OR GAS LINES COULD RESULT TO DEATH THROUGH ELECTROCUTION OR EXPLOSION.



**Know what's below.
Call before you dig.**

SAFETY DECALS

SAFETY DECALS

Make sure all safety warning decals are attached and in readable condition. Replace missing or defaced decals. Call or e-mail Tool Tuff Direct for replacement decals: (720) 437-7640; techsupport@tooltuffdirect.com



1) Part # 29-026



2) Part # 29-024



3) Part # 29-023



4) Part # 29-023



1) Part # 29-026



2) Part # 29-024



3) Part # 29-023



4) Part # 29-023



5) Part # 29-020



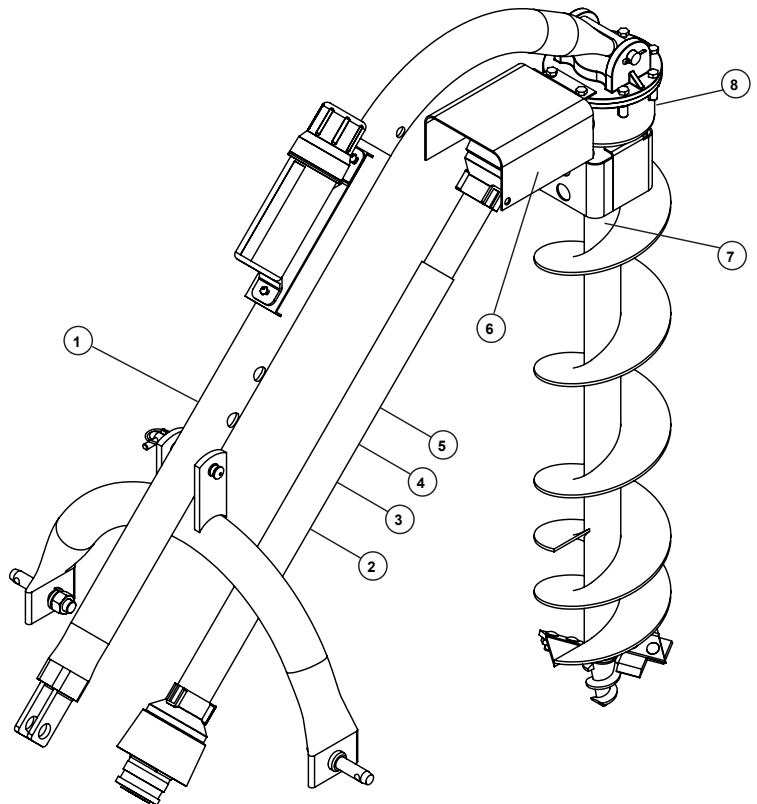
6) Part # 29-021



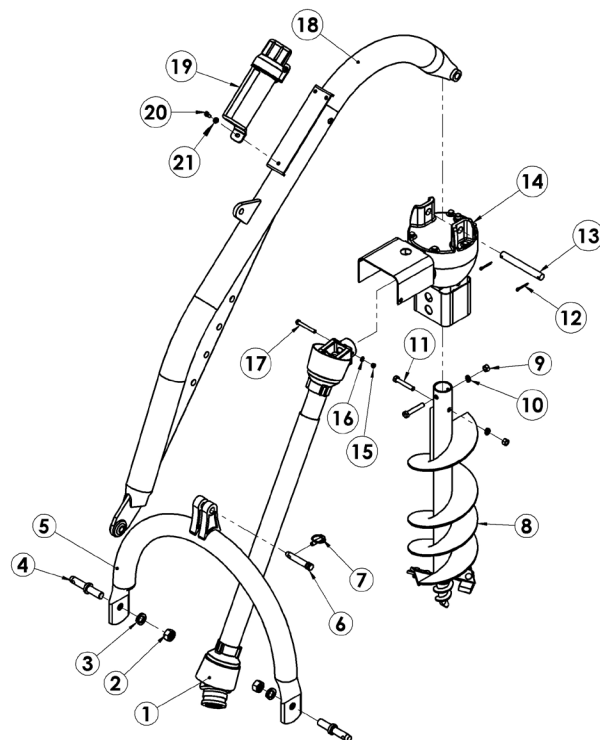
7) Part # 29-027



8) Part # 29-025

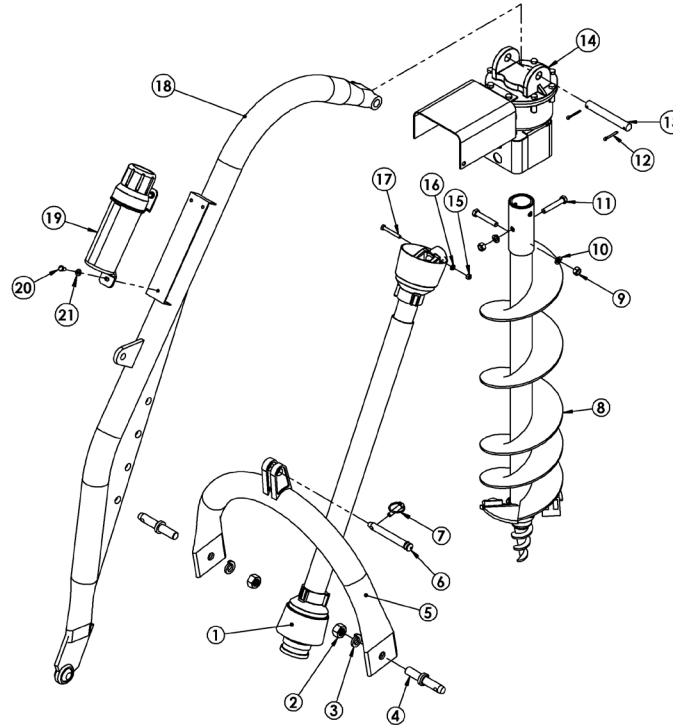


POST HOLE DIGGER PARTS LIST



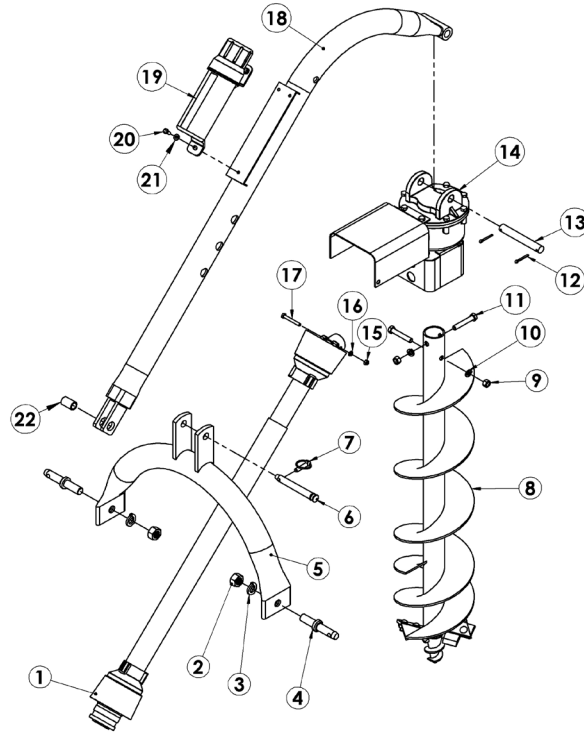
MODEL 1500 POST HOLE DIGGER			
ITEM #	P/N	DESCRIPTION	QTY
1	27-024	SERIES 4 DRIVELINE	1
2	95462A545	7/8" - 14 HEX NUT	2
3	91102A037	7/8" LOCK WASHER	2
4	43-027	7/8" DRAW PIN	2
5	24-0358	MODEL 1500 A-FRAME	1
6	24-0029	A-FRAME PIN	1
7	43-047	7/16" LYNCH PIN	1
8	N/A	AUGER (VARIOUS SIZES)	1
9	95462A033	1/2" -13 HEX NUT	2
10	91102A770	1/2" -13 LOCK WASHER	2
11	91247A726	1/2" -13 X 3.5" G5 BOLT	2
12	98338A230	5/32" X 1-1/2" COTTER PIN	2
13	24-0380	BOOM PIN	1
14	24-0360	75 HP GEARBOX WITH GUARDS	1
15	95462A031	3/8" -16 HEX NUT	1
16	91102A760	3/8" LOCK WASHER	1
17	91236A636	3/8" -16 X 3" BOLT, G5	1
18	24-0357	MODEL 1500 BOOM	1
19	24-0014	MANUAL CANISTER	1
20	92865A581	BOLT, 5/16" -18 X 3/4", SHCS	3
21	98023A030	WASHER, 5/16"	3

POST HOLE DIGGER PARTS LIST



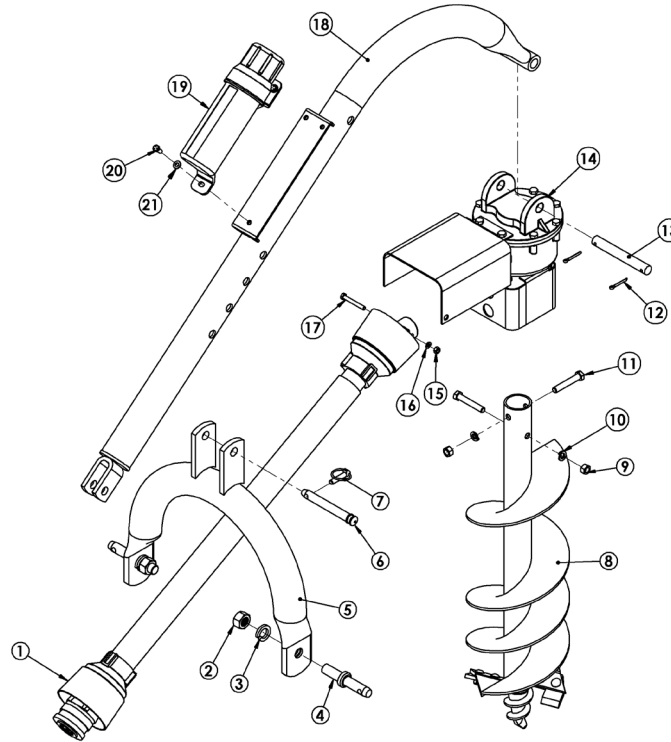
MODEL 1000 POST HOLE DIGGER			
ITEM #	P/N	DESCRIPTION	QTY
1	27-024	SERIES 4 DRIVELINE	1
2	95462A545	7/8" - 14 HEX NUT	2
3	91102A037	7/8" LOCK WASHER	2
4	43-027	7/8" DRAW PIN	2
5	24-0356	MODEL 1000 A-FRAME	1
6	24-0029	A-FRAME PIN	1
7	43-047	7/16" LYNCH PIN	1
8	N/A	AUGER (VARIOUS SIZES)	1
9	95462A033	1/2"-13 HEX NUT	2
10	91102A770	1/2"-13 LOCK WASHER	2
11	91247A726	1/2"-13 X 3.5" G5 BOLT	2
12	98338A230	5/32" X 1-1/2" COTTER PIN	2
13	24-0028	BOOM PIN	1
14	24-0359	45HP GEARBOX WITH GUARDS	1
15	95462A031	3/8" -16 HEX NUT	1
16	91102A760	3/8" LOCK WASHER	1
17	91236A636	3/8"-16 X 3" BOLT, G5	1
18	24-0316	MODEL 1000 BOOM	1
19	24-0014	MANUAL CANISTER	1
20	92865A581	BOLT, 5/16"-18 X 3/4", SHCS	3
21	98023A030	WASHER, 5/16"	3

POST HOLE DIGGER PARTS LIST



MODEL 650 POST HOLE DIGGER			
ITEM #	P/N	DESCRIPTION	QTY
1	27-023	SERIES 1 DRIVELINE	1
2	95462A545	7/8" - 14 HEX NUT	2
3	91102A037	7/8" LOCK WASHER	2
4	43-027	7/8" DRAW PIN	2
5	24-0370	MODEL 650 A-FRAME	1
6	24-0029	A-FRAME PIN	1
7	43-047	7/16" LYNCH PIN	1
8	N/A	AUGER (VARIOUS SIZES)	1
9	95462A033	1/2" - 13 HEX NUT	2
10	91102A770	1/2" - 13 LOCK WASHER	2
11	91247A726	1/2" - 13 X 3.5" G5 BOLT	2
12	98338A230	5/32" X 1-1/2" COTTER PIN	2
13	24-0028	BOOM PIN	1
14	24-0359	45 HP GEARBOX WITH GUARDS	1
15	95462A031	3/8" - 16 HEX NUT	1
16	91102A760	3/8" LOCK WASHER	1
17	91236A634	3/8" - 16 X 2.5" BOLT, G2	1
18	24-0371	MODEL 650 BOOM	1
19	24-0014	MANUAL CANISTER	1
20	92865A581	BOLT, 5/16" - 18 X 3/4", SHCS	3
21	98023A030	WASHER, 5/16"	3
22	43-087	BUSHING, TOP LINK, CAT 2 TO CAT 1	1

POST HOLE DIGGER PARTS LIST



MODEL 400 POST HOLE DIGGER			
ITEM #	P/N	DESCRIPTION	QTY
1	27-023	SERIES 1 DRIVELINE	1
2	95462A545	7/8" - 14 HEX NUT	2
3	91102A037	7/8" LOCK WASHER	2
4	43-027	7/8" DRAW PIN	2
5	24-0016	MODEL 400 A-FRAME	1
6	24-0029	A-FRAME PIN	1
7	43-047	7/16" LYNCH PIN	1
8	N/A	COMPACT AUGER (VARIOUS SIZES)	1
9	95462A033	1/2"-13 HEX NUT	2
10	91102A770	1/2"-13 LOCK WASHER	2
11	91247A726	1/2"-13 X 3.5" G5 BOLT	2
12	98338A230	5/32" X 1-1/2" COTTER PIN	2
13	24-0028	BOOM PIN	1
14	24-0359	45 HP GEARBOX WITH GUARDS	1
15	95462A031	3/8" -16 HEX NUT	1
16	91102A760	3/8" LOCK WASHER	1
17	91236A634	3/8"-16 X 2.5" BOLT, G2	1
18	24-0015	MODEL 400 BOOM	1
19	24-0014	MANUAL CANISTER	1
20	92865A581	BOLT, 5/16"-18 X 3/4", SHCS	3
21	98023A030	WASHER, 5/16"	3

ASSEMBLY INSTRUCTIONS

Notice: The gearbox is shipped without lubricant. **DO NOT** attempt to operate the device without first filling it with 80w-90 gear oil: model 1500 gearboxes take approximately 75 fl.oz. (2.25 liters) of oil, all other models take 50 fl.oz. (1.5 liters)

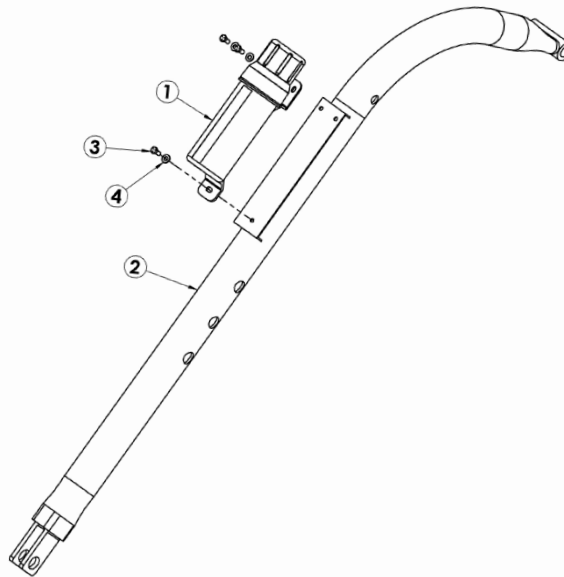
STEP 1:

Fill the gearbox with lubricant. To fill, place the gearbox on a level surface. Remove both the top fill plug and the sight plug on the back side of the gearbox. Fill the top hole with 80W-90 gear oil until oil runs out of the sight hole. Replace both plugs. The gear box holds approximately 50 fluid oz. (1.5 liters).

Notice: Do not overfill gearbox! It will damage the seals.
Check the oil level every 50 hours of operation.

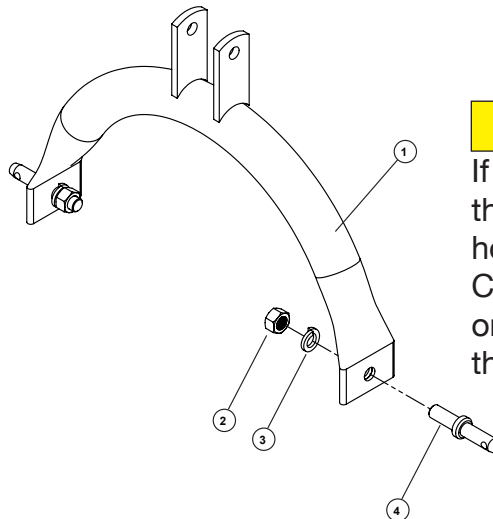
STEP 2:

Remove the manual and hardware pack from the manual canister [1]. Attach manual canister [1] to the boom [2] using hex bolt 5/16"-18 X 3/4" [3] and 5/16" washer [4].



STEP 3:

Attach the draw pins [4] to the "A" frame [1] with a 7/8" lock washer [3] and 7/8" hex nut [2]. When mounting the model 650 to Category 1 (CAT 1) tractors (lift arm spacing of 26"), attach the pins in the inward position. For CAT 2 tractors (lift arm spacing of 32"), attach the pins in the outward position as shown below.



Note:

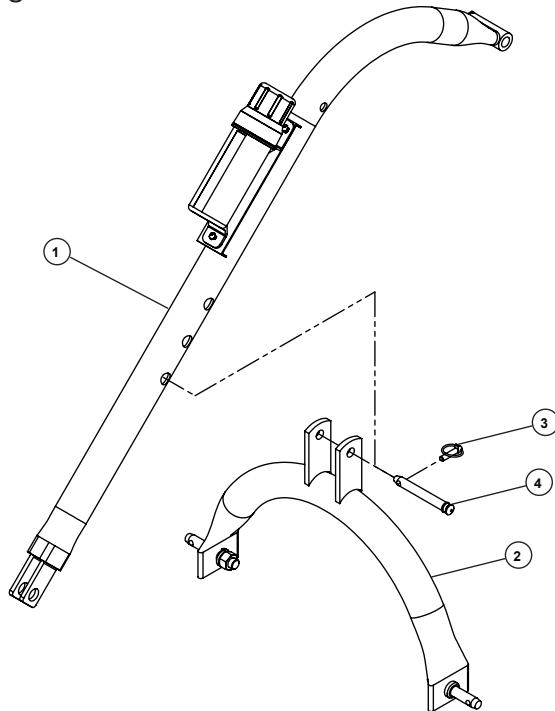
If the 7/8 in. diameter draw pins in the A-frame are too small for the holes in the lift arms, a CAT 1 to CAT 2 draw pin can be substituted, or bushings can be used to obtain the proper fit.

ASSEMBLY INSTRUCTIONS

STEP 4:

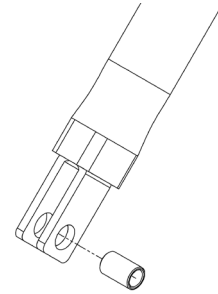
Connect the boom [1] and A-frame [2] to the tractor's 3-point lift arms. Next, mount the boom [1] to the A-frame [2] using the A-frame pin [4]. Secure with lynch pin [3].

Notice: When mounting the boom to the A-frame, the pin position may need to be adjusted. The size of your tractor and auger will determine which boom hole works best for the angle adjustment: with the tractor lift arms raised, the auger should 6" to 12" off the ground.



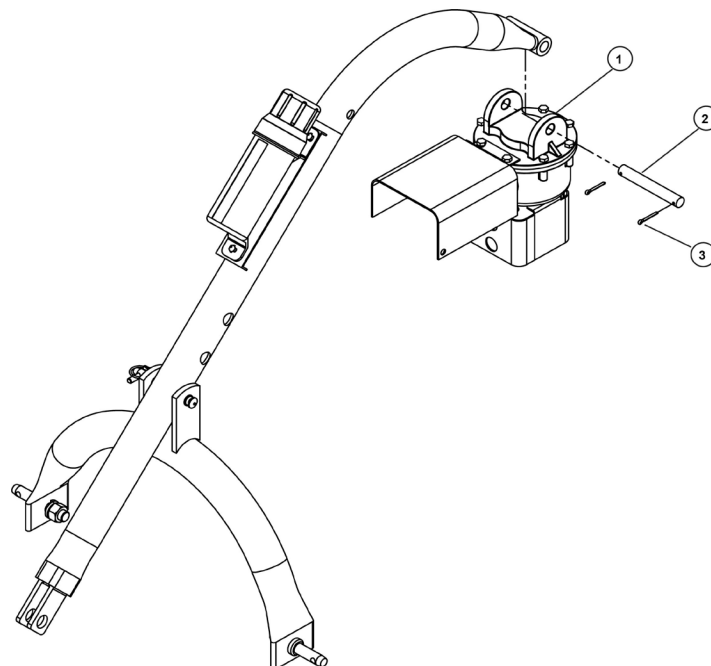
Note:

A bushing is included in the hardware kit to attach the Model 650 boom to a CAT 1 tractor. Slide the bushing through the clevis holes at the end of the boom. The bushing is not needed when attaching the Model 650 boom to a CAT 2 tractor.



STEP 5:

Mount the gearbox [1] to the boom using the boom pin [2]; secure with cotter pins [3].



ASSEMBLY INSTRUCTIONS

STEP 6:

Attach the driveline [1] to the gearbox-input shaft using the appropriate shear bolt [2] (see notice below). [Note that the gearbox-end of the driveline is smooth (not splined) on the internal dimension.] Slide driveline over gearbox-input shaft, align the holes, and insert the shear bolt. Secure the bolt with a 3/8" lock washer [3] and 3/8"-16 hex nut [4]. Tighten securely. Last, tighten the 1/4" set screw on the yoke so that it sits in the groove on the end of the gearbox-input shaft.




Attach the splined-end (1-3/8" 6-tooth spline) of the driveline [1] to the tractor's power take off (PTO) shaft. Retract the brass-colored quick-release collar, align the splines, and slip the driveline onto the tractor PTO shaft. Release the collar to secure the driveline on the PTO shaft. PTO adaptors or extenders are not recommended.

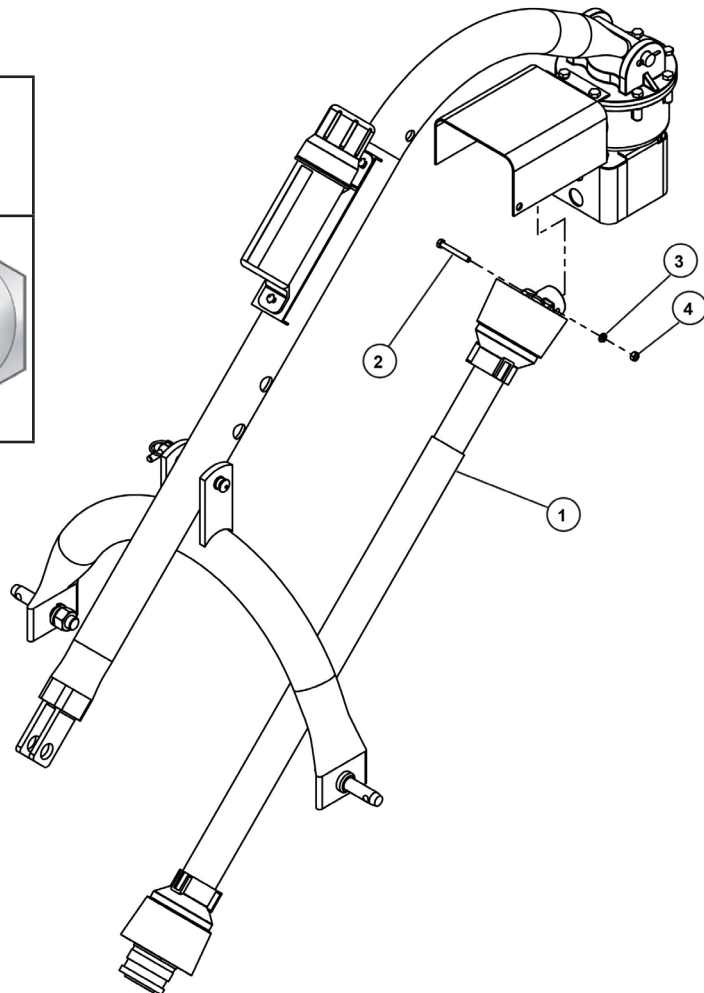
Notice: The shear bolt [2] protects your driveline and gearbox: **NEVER USE A SHEAR BOLT THAT IS LONGER OR STRONGER (HIGHER G RATING) THAN DESCRIBED HERE. YOU RISK DAMAGE TO EQUIPMENT AND PERSONAL INJURY!**

Model 400 and Model 650 require a 3/8"x 2.5" G2 shear bolt.

Model 1000 and Model 1500 require a 3/8" x 3" G5 shear bolt.

Shear bolt guide:

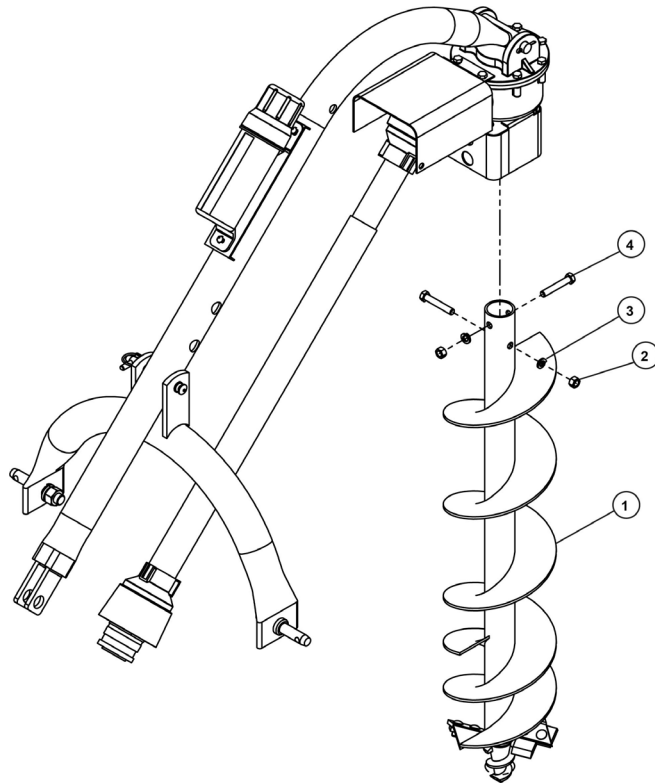
G2: Models 400 & 650	G5: Models 1000 & 1500	G8: DO NOT USE
		



ASSEMBLY INSTRUCTIONS

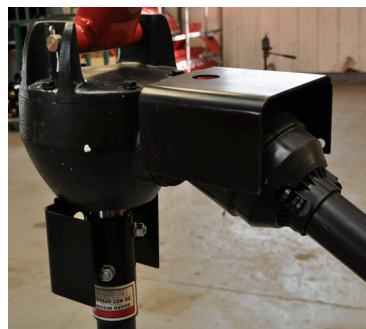
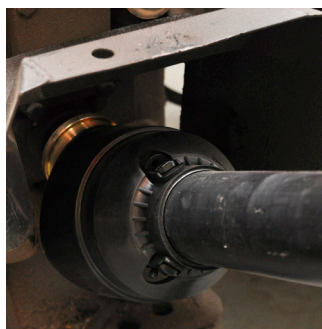
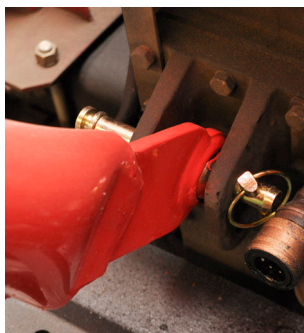
STEP 7:

Attach the auger [1] to the output shaft on the bottom of the gearbox and secure with two 1/2" x 3 1/2" hex bolts [4], 1/2" lock washers [3] and 1/2" hex nuts [2]. Tighten all hardware securely.



Note:

The images below are for reference when assembling the digger and mounting it to the tractor.



OPERATING INSTRUCTIONS



FOLLOW ALL SAFETY GUIDELINES WHEN OPERATING THIS POST HOLE DIGGER. FAILURE TO DO SO MAY RESULT IN SERIOUS INJURY OR DEATH.

STEP 1:

After attaching the post hole digger to the tractor, before engaging the power, slowly lower the auger to the ground at the desired angle for hole digging.

STEP 2:

Engage the power take off and start digging at a slow speed lowering the auger slowly as the hole is dug.

STEP 3:

Increase the speed as the auger goes deeper into the ground. The type of soil will determine the proper auger speed. A very hard or compacted soil may require operation at varying speeds for the most efficient in digging.

Notice:

If a rock, root, or other obstacle is encountered that is too large for the auger to displace the post hole digger will begin to vibrate and may cause the engine to stall. Slowly withdraw the auger from the hole completely. It may be necessary remove the obstacle manually.



TURN OFF THE TRACTOR'S ENGINE BEFORE MANUALLY DISLODGING AN OBSTACLE OR REMOVING A STUCK AUGER.

Notice:

IF THE AUGER BECOMES STUCK DO NOT ATTEMPT TO PULL IT OUT USING THE TRACTOR'S LIFT ARMS. Damage to the boom and/or gearbox may occur. Turn off the tractor, disconnect the auger from the gearbox, and manually remove the stuck auger from the hole by rotating it backwards. We recommend using a large wrench to turn the auger. Store wrench before recommencing operation.

STEP 4:

After the desired hole depth has been reached, spin the auger at a high speed to clear the hole of soil. Reduce the speed before withdrawing the auger from the hole.

STEP 5:

Disengage the power take off after withdrawing the auger from the hole and before moving to the tractor.

MAINTENANCE



ALWAYS PERFORM MAINTENANCE OPERATIONS WITH THE TRACTOR'S ENGINE POWERED OFF, PTO DISENGAGED, AND THE AUGER TIP RESTING ON THE GROUND.

Gearbox lubrication:

Check the oil level after every 50 hours of operation. Use 80W-90 lubricant or equivalent and fill to oil level plug. Always use the same replacement lubricant type.

Driveline lubrication:

The universal joint should be greased with a high-quality chassis lube approximately every 6 months. At the beginning of each season grease the sliding driveshaft members with a moly grease.

Cutting Edges:

The auger includes cutting edges that are designed to wear. Before each use, inspect the cutting edges. Remove, sharpen, and replace edges before digging. If edges show excessive wear, return to you dealer or visit us at www.tooltuffdirect.com for replacement cutting edges. The carriage bolts that hold the cutting edges in place also wear so that it becomes difficult to remove the edges. Be sure to replace carriage bolts and nuts before they wear excessively.

Pilot bits:

The auger includes a pilot bit that can be replaced if damaged or worn. Inspect pilot bit before use. Return to you dealer or visit us at www.tooltuffdirect.com for replacement bits.

SPECIFICATIONS

SKU/Part No.	24-0361	24-0362	24-0318	24-0337
Model #	400	650	1000	1500
Description	Compact	Standard Duty	Standard Duty Plus	Heavy Duty
Tractor Category	Subcompact / CAT 1 narrow / Cat 1	CAT 1 and CAT 2	CAT 1 and CAT 2	CAT 1 and CAT 2
Gear Box	2.9:1 Ratio, 2" output shaft	2.9:1 Ratio, 2" output shaft	2.9:1 Ratio, 2" output shaft	3:1 Ratio, 2" output shaft
Driveline	Series 1, fits 6-spine PTO	Series 1, fits 6-spine PTO	Series 4, fits 6-spine PTO	Series 4, fits 6-spine PTO
Boom	2-7/8" OD tubing	2-7/8" OD tubing	2-7/8" OD tubing	3-1/2" OD Tubing
A-Frame	2-7/8" OD tubing	2-7/8" OD tubing	2-7/8" OD tubing	3-1/16" OD tubing
Safety Shields	On driveline, gear box "U" joint and gear box output shaft			
Shear Bolt	3/8"-16 x 2.5" G2	3/8"-16 x 2.5" G2	3/8"-16 x 3.0" G5	3/8"-16 x 3.0" G5
Augers	6" diameter compact auger	6" diameter auger	6" diameter auger	6" diameter auger
	9" diameter compact auger	9" diameter auger	9" diameter auger	9" diameter auger
	12" diameter compact auger	12" diameter auger	12" diameter auger	12" diameter auger
	-	-	18" diameter auger	18" diameter auger
	-	-	24" diameter auger	24" diameter auger
Warranty	1 Year Limited Warranty	1 Year Limited Warranty	1 Year Limited Warranty	1 Year Limited Warranty

WARRANTY

We warranty all AgKNX parts for manufacturing defects: 3 years from date of purchase for gearboxes, and 1 year for all other parts. The warranty gives the consumer certain and specific rights which may vary from state to state.

The warranty may be refused if the registration is not completed or date of purchase cannot be established. Register your product upon purchase for the best customer service experience.

Warranty does not cover normal wear, misuse, neglect, abuse, improper maintenance, overload beyond rated capacity, accidents, cosmetic defects, consumables, non-authorized replacement parts or accessories, operation with inadequate supply of gear box oil, improper fluid types or unauthorized adjustments.

IMPORTANT NOTICE

We, the manufacturer, reserve the right to change the product and/or specifications in this manual without notification. The manual is for information use only and the pictures and drawings depicted herein are for reference only.

Warranty Repair and Service

Do not return this product to the store for warranty issues or repair. Contact our customer service department (Tel: 720-437-7640 / E-mail: techsupport@tooltuffdirect.com) for the location of the nearest service center.

Questions? For service call:
720-437-7640



REGISTRATION

Acceptance of Responsibility:

I (the purchaser) have read the Operation Manual and Limited Warranty or someone has read and explained all instructions to me. I understand this warranty does not cover any labor and that all disputes will be settled by binding arbitration. Warranty void if any attempt to repair or replace defective parts has been made by unauthorized personnel. The mark next to each item below confirms my acceptance of responsibility for the use and maintenance of this post hole digger. I understand that I alone am responsible for the proper maintenance, care and safe operation of this post hole digger.

- Received, read and understand the Operation Manual
- Understand the safety warnings
- Specifications accepted
- Operations understood
- Maintenance requirements understood

I (purchaser) understand that persons who have not read and understand the operations manual should not be allowed to use the machinery. Children should not operate or be near the equipment. Anyone operating the post hole digger must have read the safety and operations manual.

Is this post hole digger used in a business:

No: _____ Yes, business type: _____

Owner / Purchaser Signature: _____

WARRANTY REGISTRATION

Register your product for the best customer service experience!

WARRANTY REGISTRATION BY MAIL

To register your device:

1. Fill in the information below.
2. Cut out and attach receipt or proof of purchase.
3. Mail to:

Tool Tuff Direct
15000 West 44th Ave,
Suite B Golden, CO 80403

WARRANTY REGISTRATION FORM

Product: 3-point Post-Hole Digger

Model 400 (SKU # 24-0361); Model 650 (SKU# 24-0362); Model 1000 (SKU# 24-0318); Model 1500 (SKU# 24-0337)

Device Serial #:		
Purchase date:		
Purchased from (Store / City):		
Purchaser:		
Purchaser address:		
City:	State:	Zip code:
Purchaser phone #:	E-mail:	
Tractor (Make / Model) used on:		

By registering for the limited warranty, I accept the terms of the "Acceptance of Responsibility" set forth above.

WARRANTY REGISTRATION BY E-MAIL

Warranty registration may be completed by legibly filling out the above information, take a photo or scan the Warranty registration page and emailing them to: warranty@tooltuffdirect.com

Subject line of the warranty registration email should read: Post Hole Digger

WARRANTY REGISTRATION BY ONLINE SUBMISSION

Registration may be completed by following the QR code below. Use the camera app on your smartphone in the same manner you would if you were taking a photo. Your smartphone will recognize the code, and a link will appear on the screen. Tap the link and you will be direct to the form on our website.





ToolTuff Direct
15000 W 44th Ave., Ste B
Golden, CO 80403

For service call or email:
720-437-7640
customerservice@tooltuffdirect.com

