



Your agricultural parts connection

Skid Steer Mounted Post Hole Digger



Operator's Manual

Part # 29-043
(for replacement manual)



A product registration form is included in the back of this booklet. Register your product within 2 weeks of purchase for the best customer-service experience.

Safety Symbols



This safety alert symbol identifies important safety messages in this manual. Failure to follow this important safety information may result in serious injury or death.

Notice:

This "Notice" symbol is used throughout this manual to identify situations in which damage to equipment may occur or physical harm and bodily injury are possible.

Use common sense and stay safe!

Notice:

The gearbox is shipped without lubricant. DO NOT attempt to operate device until you have filled the gearbox with 85w-140 heavy-duty gear oil.

(See: Assembly, Step 6)

TABLE OF CONTENTS

Welcome	4
Important Safety Information	5-6
Safety Decals	8
Parts List	8
Assembly Instructions	9-11
Installation Instructions	12
Operating Instructions	13-14
Removal and Storage Instructions	14-15
Maintenance Instructions	15
Trouble Shooting	16
Specifications	17-18
Warranty Information	20
Registration Information	21
Warranty Registration.....	20

Welcome!

Thanks for buying an AgKNX skid steer mounted post hole digger! We design our products to meet the high standards of our industrial and commercial clients, with ease-of-use that's aimed at homeowners and do-it-yourselfers. That means that our products are tough enough to meet the rigorous demands of the industry, but designed for non-professionals to use, too. We proudly provide technical support and service for all of our products. If you have questions, technical issues, or feedback, we want to know! For expert service, contact us directly before you return to the dealer:

customerservice@tooltuffdirect.com

720-437-7640

We warranty all AgKNX parts for manufacturing defects: 3 years from date of purchase for gearboxes, and 1 year for all other parts. Register your product today.

For warranty claims, parts replacement, repairs, and questions, record the following information below:

Model No. _____

Serial No. _____

Date of Purchase _____

Place of Purchase _____

The installer and/or operator of this device assumes full responsibility for property damage and personal injury.

Skid Steer Mounted Post Hole Digger



Safety First!



WARNING: Read and thoroughly understand all instructions and safety information before assembling or operating this post hole digger. Failure to do so may cause serious injury or death. Do not allow anyone to operate the device who has not read this manual. As with all power equipment, a post hole digger can be dangerous if assembled or used improperly. Do not operate if you have doubts or questions concerning safe operation.

If you have any questions or doubts about the safe operation of this equipment, contact our customer service department: Tel: 720-437-7640; Email: customerservice@tooltuffdirect.com



INTENDED USE: This device intended and designed for auguring holes in suitable substrate in a vertical orientation. Any other use is unauthorized, voids any warranty, and may result in serious injury or death.



The information in this Operator's Manual is critical to the safe operation of the device. For safety, better performance, and a longer service life with your post hole digger, read and understand this manual. We have included relevant information about basic operation and maintenance that will help you keep your post hole digger in serviceable condition and maximize the product's useful life. Consider this manual a permanent part of the device, keep it with the product, and include it with the product if you sell it. Replacement manuals available upon request.
(Part #29-043)



PERSONAL PROTECTIVE EQUIPMENT: When operating this equipment it is essential that you wear safety gear including safety glasses, steel toe shoes, and well fitting gloves (no loose cuffs or draw strings).



DO NOT wear loose clothing or jewelry that can be caught by moving parts of the post hole digger, including the auger! Keep clothing and hair from all moving parts when operating.

IMPORTANT SAFETY INFORMATION



GENERAL SAFETY



Failure to follow the warnings, cautions, and assembly and operation instructions throughout this manual may result in serious injury or death.



SERIOUS INJURY OR DEATH WILL RESULT FROM ENTANGLEMENT WITH MOVING PARTS.



PRESSURIZED HYDRAULIC SYSTEMS CAN BE DANGEROUS. IF FLUID IS INJECTED INTO YOUR SKIN GET MEDICAL ATTENTION IMMEDIATELY. HYDRAULIC OIL LEAKS CAN BE INVISIBLE AND CAN PUNCTURE THE SKIN, INJECTING FLUID, CAUSING INFECTION, POISONING, AND EVEN DEATH. USE A PIECE WOOD OR CARDBOARD TO CHECK FOR LEAKS, NEVER YOUR HAND. WEAR GLOVES AND EYE PROTECTION AT ALL TIMES.



ONE PERSON USE ONLY! THIS POST HOLE DIGGER IS MEANT TO BE OPERATED FROM DRIVERS SEAT OF SKID STEER AND NOWHERE ELSE.



DO NOT OPERATE THE POST HOLE DIGGER WHILE ANYONE IS IN CONTACT WITH ANY PART OF THE IMPLEMENT. KEEP ALL PEOPLE AND PETS A MINIMUM OF **25 FEET** AWAY FROM THE WORK AREA WHEN OPERATING THIS POST HOLE DIGGER.



DO NOT OPERATE THE DEVICE WHEN UNDER THE INFLUENCE OF ALCOHOL, DRUGS, OR MEDICATION. DO NOT ALLOW A PERSON WHO IS TIRED, OTHERWISE IMPAIRED, OR NOT COMPLETELY ALERT TO OPERATE THE POST HOLE DIGGER.



DO NOT PERMIT ANYONE THAT HAS NOT READ AND UNDERSTOOD THIS OPERATOR'S MANUAL TO USE THIS EQUIPMENT.



DO NOT PERMIT CHILDREN TO OPERATE THIS EQUIPMENT AT ANY TIME.



DO NOT ATTATCH THE POST HOLE DIGGER TO THE SKID STEER WHILE THE ENGINE RUNNING.



ALWAYS CALL AND CHECK FOR BURIED ELECTRICAL CABLES AND GAS LINES BEFORE YOU DIG. CONTACT WITH BURIED ELECTRICAL OR GAS LINES COULD RESULT IN DEATH THROUGH ELECTROCUTION OR EXPLOSION.



MAINTAIN SAFE CLEARANCE AND AVOID CONTACT WITH OVERHEAD UTILITY LINES OR ELECTRICALLY CHARGED CONDUCTORS.



BEFORE DISCONNECTING HYDRAULIC LINES OR FITTINGS, RELIEVE PRESSURE BY CYCLING ALL HYDRAULIC CONTROLS AFTER SHUTDOWN.



NEVER GO UNDER THE RAISED LOAD ARMS TO ENTER OR EXIT A SKID STEER. LOWER THE ARMS COMPLETELY BEFORE EXITING THE SKID STEER.

IMPORTANT SAFETY INFORMATION: SAFETY DECALS

DO NOT alter or remove safety decals; they are there for your protection. Periodically check that all safety decals are in readable condition. Replace immediately if damaged or missing; locations and part numbers (P/N) of all safety decals are shown below.

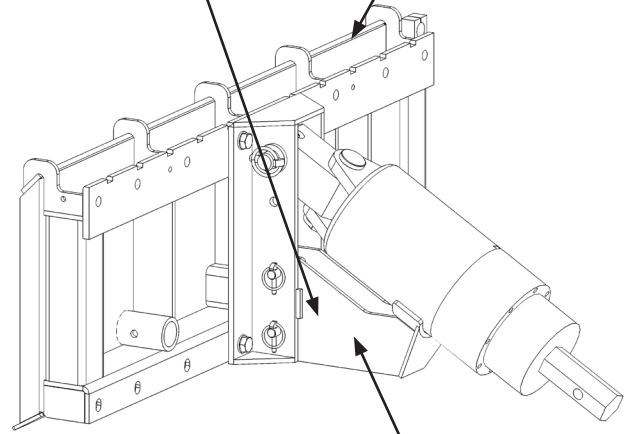
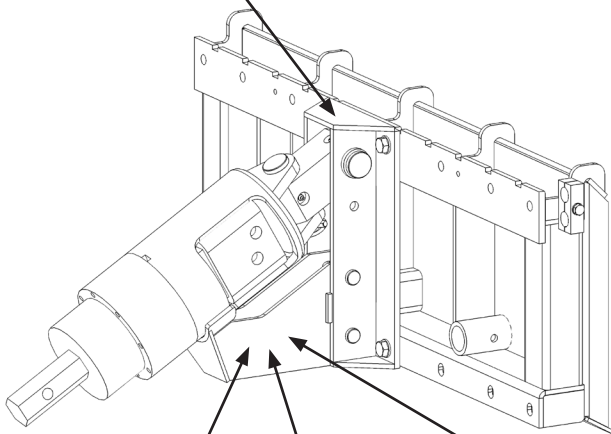


P/N: 29-035



P/N: 29-063

Serial Number



**Know what's below.
Call before you dig.**

P/N: 29-065



P/N: 29-031

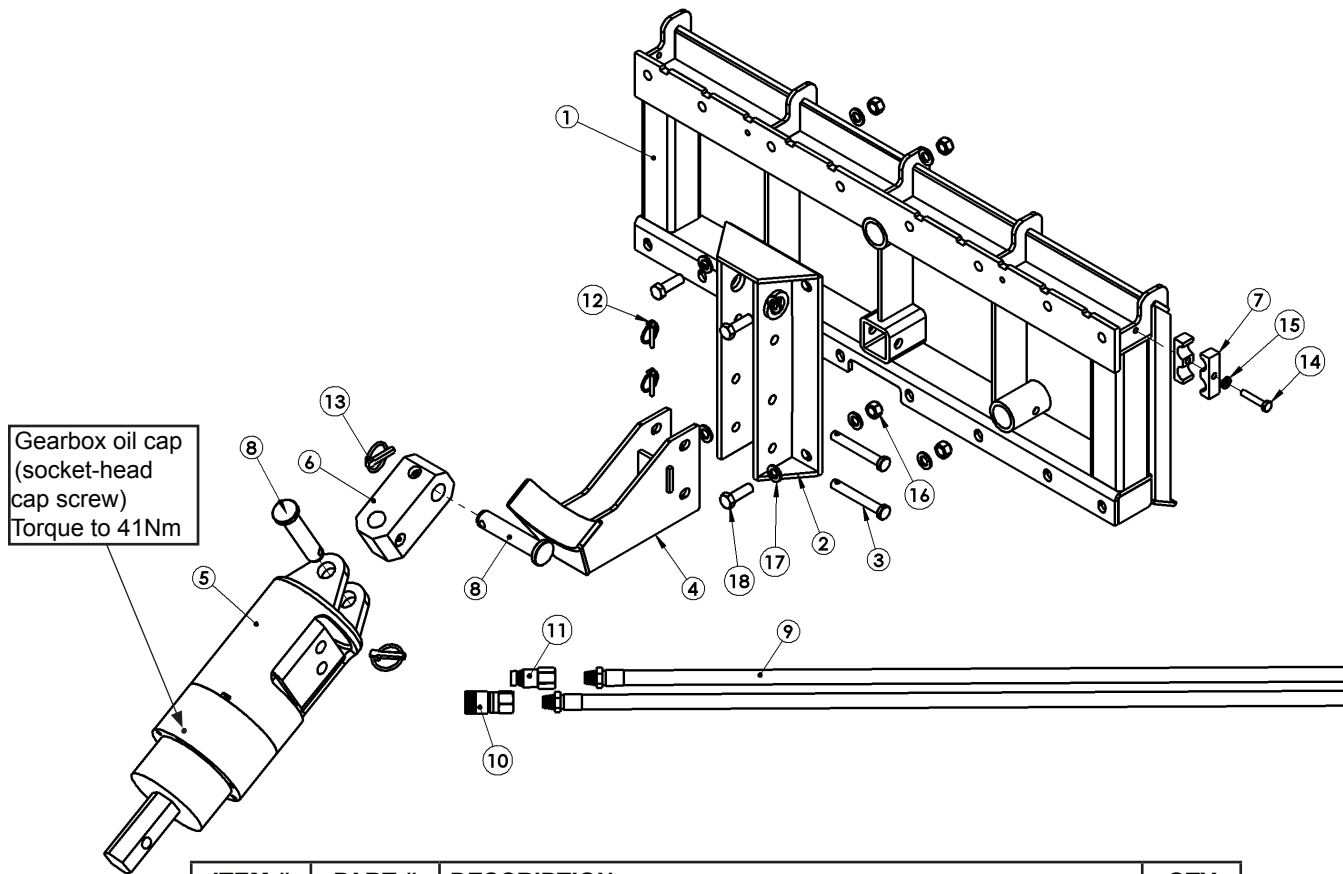


P/N: 29-033



P/N: 29-033

PARTS LIST



ITEM #	PART #	DESCRIPTION	QTY
1	24-0297	UNIVERSAL SKID STEER MOUNTING PLATE	1
2	24-0390	CRADLE BASE	1
3	24-0391	CRADLE MOUNT PIN	2
4	24-0392	GEARBOX CRADLE	1
5	*	MOTOR/GEARBOX ASSEMBLY	1
6	24-0300	SKID STEER SWIVEL BLOCK	1
7	24-0303	HOSE CLAMP	2
8	24-0389	SWIVEL BRACKET PIN	2
9	24-0397	PRESSURE HOSE, 9' LENGTH	2
10	31-050	1/2" FLAT FACE FEMALE - ISO 16028	1
11	31-051	1/2" FLAT FACE MALE - ISO 16028	1
12	50-004	1/4" LYNCH PIN	2
13	50-005	7/16" X 2" LYNCH PIN	2
14	**	M10 X 1.25MM X 50MM HHCS BOLT	1
15	**	M10 WASHER	1
16	**	M16 X 2MM NYLOCK NUT	4
17	**	M16 WASHER	8
18	**	M16 X 2 X 50MM HHCS BOLT	4

* Specific gearbox varies by model number, see below:

Model #:	HP11	HP21	HP27	HP41	HP49
Part number:	24-0419	24-0415	24-0418	24-0416	24-0417

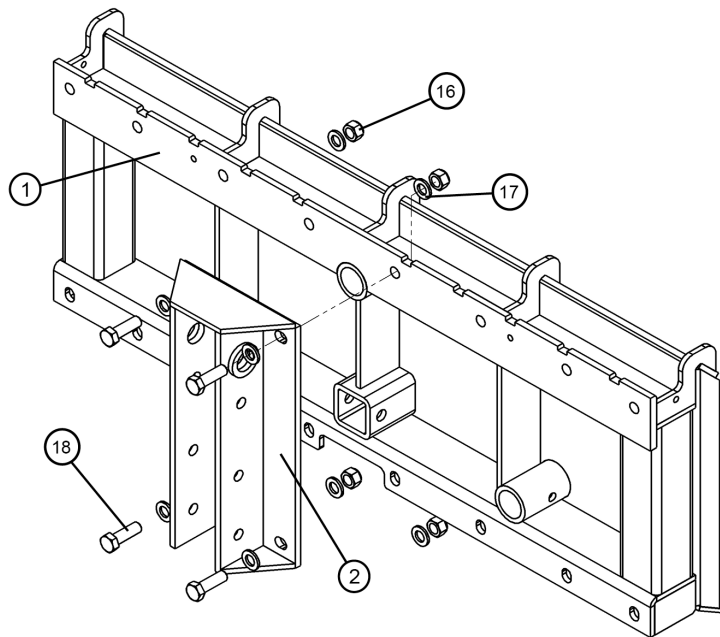
** Obtain locally

ASSEMBLY INSTRUCTIONS

STEP 1:

Attach cradle base to universal plate

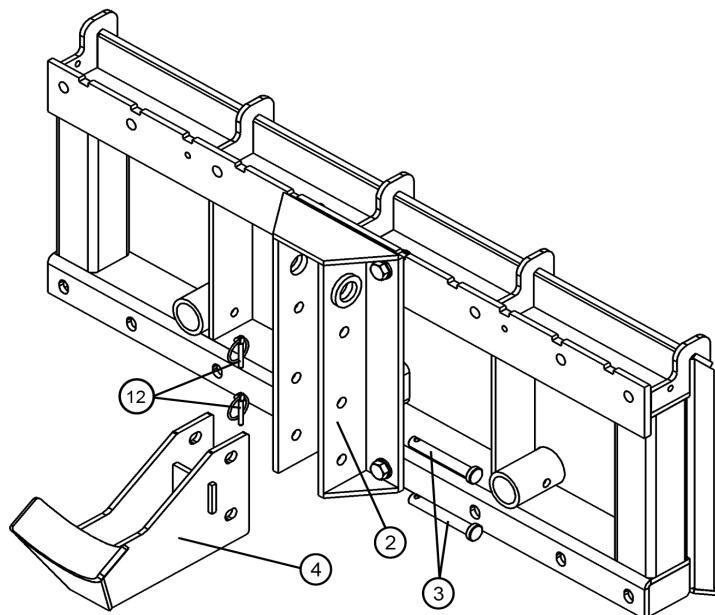
- Orient the cradle base [2] to align with the universal skid steer mounting plate [1]. Standard orientation is at the center of the of the skid steer plate. The base should be easily visible to the skid steer operator when mounted.
- Attach the cradle base [2] to the skid steer universal plate [1] using M16 x 50mm bolts [18], washers [17], and nylock nuts [16]. Torque to 223 Nm.



STEP 2:

Attach gearbox cradle to base

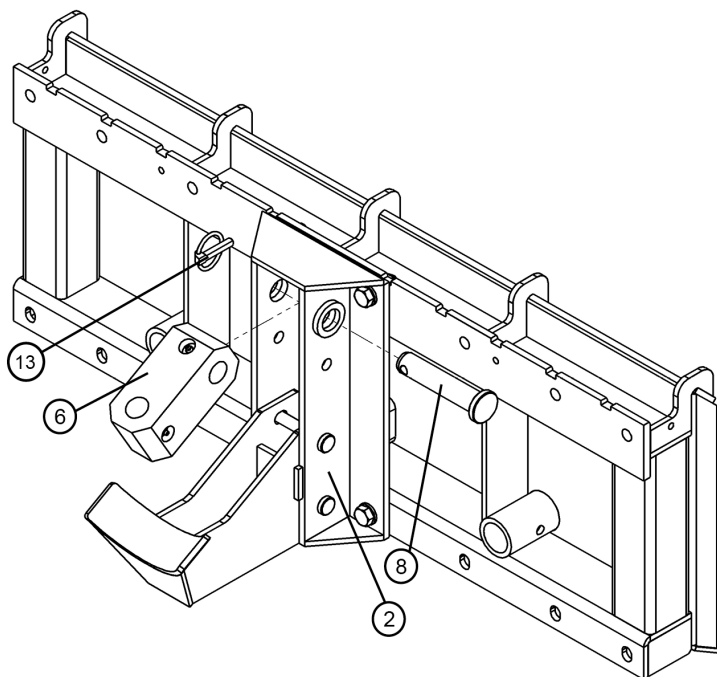
- Mount the gearbox cradle [4] over the cradle base [2].
- Secure base with cradle-mount pins [3] and lynch pins [12].



ASSEMBLY INSTRUCTIONS

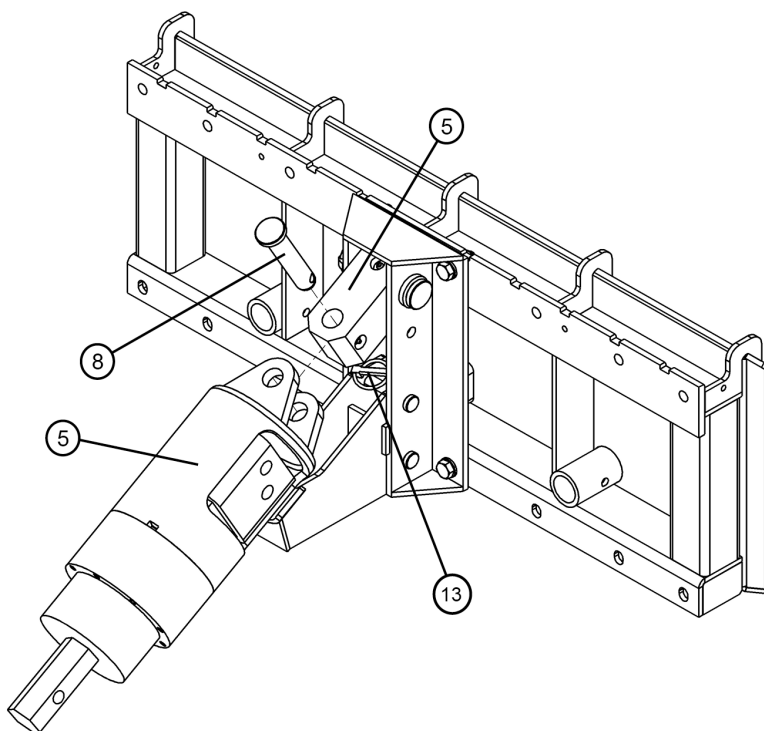
STEP 3: Attach the swivel block to the cradle base

- Set the swivel block [6] in the cradle base [2] and align holes.
- Secure the block [6] with the swivel bracket pin [8] and 7/16" lynch pin [13].



STEP 4: Connect the gearbox assembly to the swivel block

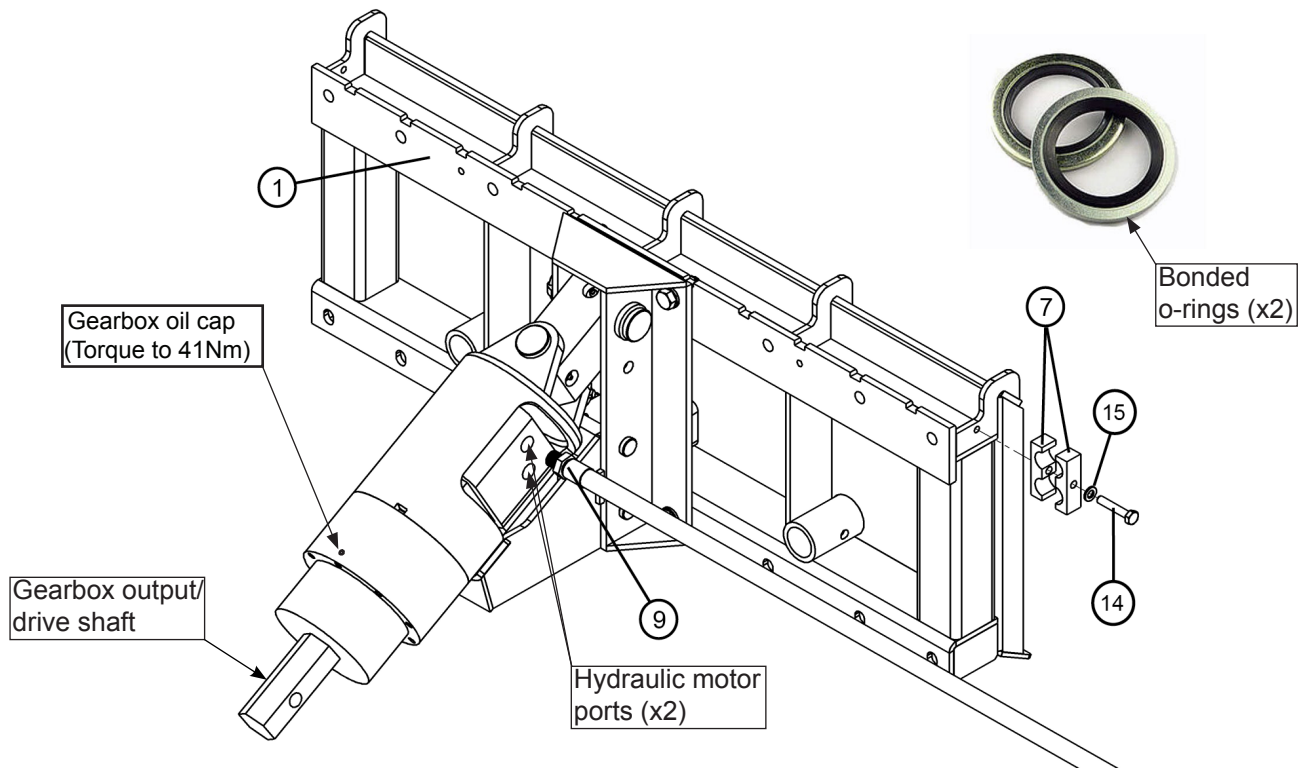
- Position the ears of the hydraulic motor/gearbox assembly [5] over the swivel block [6] and line up the holes.
- Secure the assembly with the swivel bracket pin [8] and 7/16" lynch pin [13].



ASSEMBLY INSTRUCTIONS

STEP 5: Connect the hydraulic hoses

- Locate the 1/2" BSPP hydraulic motor ports. These require bonded o-rings (included, see inset) to seal the connection.
- Place the o-ring seal over the threads of the hose [9], then thread the pressure hoses fully into the hydraulic motor ports.



- Next, create a service loop with the slack in the hoses so that the gearbox can travel in all directions without stretching, pinching, or kinking the hoses. Then, position the 2 pressure hoses between the hose-clamp blocks [7].
- Use an M10 x 1.5mm x 50mm bolt [14] and washer [15] to secure the hose-clamp blocks [7] to the side of the skid steer mounting plate [1].

STEP 6: Fill the gearbox with oil

- The gearbox is shipped without lubricant. Fill with 85W-140 gear oil until the oil level is at the bottom of the fill port when angled approximately 30 degrees from vertical. Check oil level occasionally, or if you spot a leak.

See below for the approximate quantity of gear oil required by each model:					
Model:	HP11	HP21	HP27	HP41	HP49
Quantity:	700mL	1.2L	1.2L	1.6L	1.6L

STEP 7: Attach the auger

- Apply grease to the gearbox output/drive shaft to prevent galling. Then, align the hexagonal collar of the auger (not pictured) to the gearbox output/drive shaft and slide into place. Use a 3/4" G8 bolt or steel pin with lynch pin to secure. Use the shortest mounting pin or bolt possible to reduce the chance of entanglement.

INSTALLATION INSTRUCTIONS

Attach the universal plate assembly to the skid steer as you would other skid steer attachments. Once mounted, be sure to lock the skid steer universal mounting plate onto the coupler frame of the skid steer—serious injury or death can result if the unit falls off the skid steer mounts!

STEP 1: Prep the mounting coupler

Tilt the skid steer mounting coupler forward. Drive forward slowly, aligning the coupler with the universal mounting plate.

STEP 2: Seat the mounting plate

Once aligned and loosely fitted, lift and tilt the skid steer mounting coupler back, allowing the implement to fully seat: the universal plate must be fully seated before it can be locked in place.

STEP 3: Lock the mounting plate in position

Engage the skid steer mounting coupler pins manually (or automatically if your skid steer has an automatic quick coupler feature). Verify that the pins are aligned and fully inserted, and that the mounting plate is secured.

STEP 4: Connect the hydraulic system

Connect the hydraulic lines to the auxiliary connectors on the skid steer. The flat-face quick disconnect fittings that come attached to the hoses of this product are 1/2" ISO 16025. Verify that they match your skid steer; if they do not, you will have to provide a suitable hose.

Ensure that the hydraulic pressure has been relieved prior to connecting or disconnecting any hydraulic fittings: Shut down the engine and cycle the hydraulic controls to relieve pressure. When disconnecting a quick connect fitting, push the hose fitting into the skid steer fitting, *hold it for a couple of seconds to allow pressure to equalize*, then slide the collar of the female fitting away from the connection point to release the male fitting. Make sure both male and female quick disconnect fittings are clean and free of dirt before coupling. Wear gloves and eye protection.



Before pressurizing the system, make sure all connections are tight and that there is no damage to hydraulic lines or fittings.

STEP 5: Check your setup

Enter the skid steer with the load arms resting on the ground. From the operator seat, slowly raise the lift arms, watching to ensure the hoses move freely, do not get caught, and have enough length to cover the full range of operating motion. Take care to check that the hoses are routed so that they will not be pinched or stretched. Adjust the clamps and hoses as necessary.

OPERATING INSTRUCTIONS

BEFORE OPERATING

Before operating the skid steer, double check that the auger frame is correctly mounted and locked onto the skid steer, that all bolts are tight, nuts and lock washers are in place, all pins are secured, and hoses are connected and secured.

Notice: Ensure that the gearbox is filled with 85W-140 gear oil. (See Step 6, above.)

STEP 1: Inspect the digging area

Inspect the area in which you plan to dig. Call 811 or your local utility companies to locate any utility lines. Clear the area of obstacles and objects that could become entangled or thrown by the auger. Check for uneven ground, ditches or obstacles that could cause the skid steer to become stuck or roll. Mark any objects that cannot be moved so you are aware of them while operating.

STEP 2: Position the skid steer

Tip the universal mounting plate up, so the auger is resting in the cradle when driving toward your digging location. Do not spin the auger during transport.

STEP 3: Prep the auger for contact

Raise the loader arms sufficiently, then tip the skid steer universal mounting plate forward so that the auger hangs freely. Do not dig with the auger against the cradle; the auger needs the freedom to move in any direction should it hit a hard object.

STEP 4: Lower the auger to the ground

Lower the auger slowly, while not rotating, until the auger's tip bites into the ground. Do not power the auger yet.

STEP 5: Align the auger vertically

With the auger's weight on the ground, adjust the position of the skid steer if necessary to ensure the auger is aligned vertically.



Position the auger by maneuvering the skid steer from the operators seat. DO NOT attempt to position the auger by hand or with tools.

STEP 6: Dig a hole

Use the skid steer controls to rotate the auger clockwise allowing the auger to dig in and remove ground from the hole. Do not use excessive down pressure as this will cause the auger to frequently stall. Only use enough down pressure to allow the auger to continuously dig.

If the auger becomes stuck, do not attempt to pull the auger up. Reverse the rotation of the auger so the auger becomes unstuck and then proceed to slowly lift to remove the auger while rotating in the counterclockwise, reverse direction.

STEP 8: Retract the auger

When the auger reaches the desired depth, allow the auger to rotate for a few more seconds before lifting it up and out of the hole. To achieve a cleaner hole, retracting may be best done while rotating the auger slowly or not rotating at all. You will get a feel for it with experience and in different types of substrate.

OPERATING INSTRUCTIONS: TIPS

TIPS FOR BETTER RESULTS

- Raise the auger almost out of the hole after every 2 feet of penetration to clear dirt. Spin the auger once above ground to clear dirt from the auger's flighting.
- When the auger reaches the desired depth, allow the auger to dwell momentarily at this depth at a slower speed to better clear out the hole. Lift the auger from the hole while slowly rotating the auger.
- Once the auger has cleared the hole, deactivate auger rotation.
- Move away from the hole and then spin the auger at a high speed to remove loose dirt from the flighting. To remove clay or other stubborn soil, actuate in a forward-stop manner.

BEFORE DRIVING

Stop auger rotation, set the lift arms at an intermediate height (with plenty of clearance for auger tip), and tilt the universal plate up so that the auger is resting in the cradle before driving to the next hole location.



Travel only with the auger on the cradle and not rotating. Drive slowly over rough ground and on slopes.

REMOVAL AND STORAGE INSTRUCTIONS

STEP 1: Detach the universal mounting plate

Lower the unit onto a flat and level surface. Unlock the mounting pins and remove the skid steer coupler from the mounting plate so that the assembly is resting on the ground.

STEP 2: Disconnect the hydraulic system



Ensure that the hydraulic system pressure has been relieved prior to connecting or disconnecting hydraulic fittings!

Hydraulic systems are under pressure whenever the engine is running and may hold pressure after engine shutdown. Shutdown the engine and cycle the hydraulic controls to relieve pressure. When disconnecting a quick connect fitting, push the hose fitting into the skid steer fitting and *hold it for a couple of seconds to allow the pressure to equalize*, then move the collar on the female fitting away from the connection point to release the male fitting. Disconnect the hydraulic hoses from the skid steer.

STEP 3: Connect the hoses together

Connect the male and female quick disconnect couplers of the digger to each other to prevent contaminants from entering the digger's hydraulic system.

STEP 4: Clean

Thoroughly clean and wash all dirt and grime from the post hole digger.

STEP 5: Check the unit

Inspect and tighten any loose bolts, nuts or hydraulic components. Replace any damaged or missing warning or safety labels.

MAINTENANCE INSTRUCTIONS

Notice: Do not modify this device. Modifications may impact function and performance, shorten the operating life, and affect the safe operation of the post hole digger.

Notice: When changing out the post-hole digger attachment or performing any service to the unit, make sure all connections, mounting bolts, and pins are securely fastened.



Before exiting the vehicle or performing any maintenance, lower the auger to the ground, turn off the vehicle's engine, cycle the hydraulic system, and lock the vehicle's brakes. Never go under the raised load arms of a skid steer.

Maintenance	Interval
Check for damaged or missing warning/safety decals. Call for replacement decals. See page 7 for details.	Before each use
Inspect attachment for damage, worn parts, or cracked welds.	Before each use
Coat the hex gearbox output shaft with grease prior to attaching an auger.	Prior to attaching an auger
Check all hydraulic parts for leaks or wear. Use a piece of wood or cardboard to check suspected leaks. Do not check with bare hands!	Daily
Check oil level in gearbox. Remove front plug: Oil should be approximately at the plug level when angled 30° from vertical. Specification: 85w-140 heavy-duty extreme pressure lubricant.	Daily
Check that all fasteners are properly torqued.	Daily
Change gearbox oil.	Every 500 hours of use or 6 months

TROUBLE SHOOTING

Problem	Possible Cause	Correction
Lacks drilling power	Low system pressure	Install a pressure gauge and verify with skid steer specifications.
	Gearbox is too small	Purchase gearbox with higher reduction rate.
Slow auger speed	Low flow	Check flow rate of aux port with flow meter.
	Fittings or connections are too small or incompatible	Replace with proper size.
	Hydraulic hose pinched or kinked.	Reroute hoses.
	Dirty oil or filter	Change oil and filter per vehicle manufacturer's recommendations.
	Hydraulic motor worn or damaged	Contact customer service.
Auger will not drill	Worn auger teeth or pilot bit	Replace auger teeth or pilot teeth.
	Ground too hard and dry	Use an auger with carbide teeth. Water ground to soften.
Gear oil leaks	Output shaft seal worn or damaged	Replace output seal. Contact customer service for parts.
	Motor seals damaged or torn, causing hydraulic oil to leak into gearbox	Contact customer service.
Hydraulic oil leaks	Bonded o-ring seal missing	Remove hydraulic hose and replace bonded o-ring seal.
	Fittings loose or damaged	Tighten or replace fittings.
	Hydraulic hose loose or damaged	Tighten or replace hydraulic hose.
Vehicle hydraulic oil overheating	Low hydraulic oil	Add hydraulic oil to vehicle's reservoir.
	Improper hydraulic oil	Replace with proper oil per vehicle manufacturer's recommendations.
	Dirty hydraulic oil or filter	Change oil and filter per vehicle manufacturer's recommendations.
	Improper hose size	Check hose size and length requirements
Hydraulic hose failure	Hydraulic relief pressure setting too high	Adjust vehicle hydraulic relief pressure setting to attachment specifications.
	Hoses worn or damaged	Replace hoses.
	Hoses rating too low for vehicle's hydraulic system	Replace hoses with hoses with working pressure rated higher than vehicle hydraulic pressure.
	Hoses pinched, kinked or stretched	Replace hoses.



Questions? For service call:

(720) 437-7640



SPECIFICATIONS

MODEL	HP11	HP21	HP27	HP41	HP49
MAX PRESSURE (PSI)	4300				
MAX CONT. PRESSURE (PSI)	3600				
MAX CONT. FLOW (GPM)	20				
DISPLACEMENT (CM ³ / REV)	100	154	154	243	311
GEARBOX RATIO	3.54	3.67	5.06		

MODEL HP11					
VEHICLE FLOW (GPM)					
2	4	6	8	10	12
19	38	57	76	95	115
AUGER SPEED (RPM)					

MODEL HP11					
AUXILIARY PRESSURE (PSI)					
2000	2500	3000	3500	4000	4300
578	722	867	1011	1156	1242
TORQUE (FT-LBS)					

MODEL HP21					
VEHICLE FLOW (GPM)					
6	9	12	16	20	23
36	54	72	96	121	139
AUGER SPEED (RPM)					

MODEL HP21					
AUXILIARY PRESSURE (PSI)					
2000	2500	3000	3500	4000	4300
915	1144	1373	1602	1831	1968
TORQUE (FT-LBS)					

MODEL HP27					
VEHICLE FLOW (GPM)					
6	9	12	16	20	23
26	39	52	70	87	101
AUGER SPEED (RPM)					

MODEL HP27					
AUXILIARY PRESSURE (PSI)					
2000	2500	3000	3500	4000	4300
1262	1578	1893	2209	2524	2713
TORQUE (FT-LBS)					

MODEL HP41					
VEHICLE FLOW (GPM)					
6	9	12	16	20	23
17	25	33	44	55	64
AUGER SPEED (RPM)					

MODEL HP41					
AUXILIARY PRESSURE (PSI)					
2000	2500	3000	3500	4000	4300
1991	2489	2987	3485	3983	4281
TORQUE (FT-LBS)					

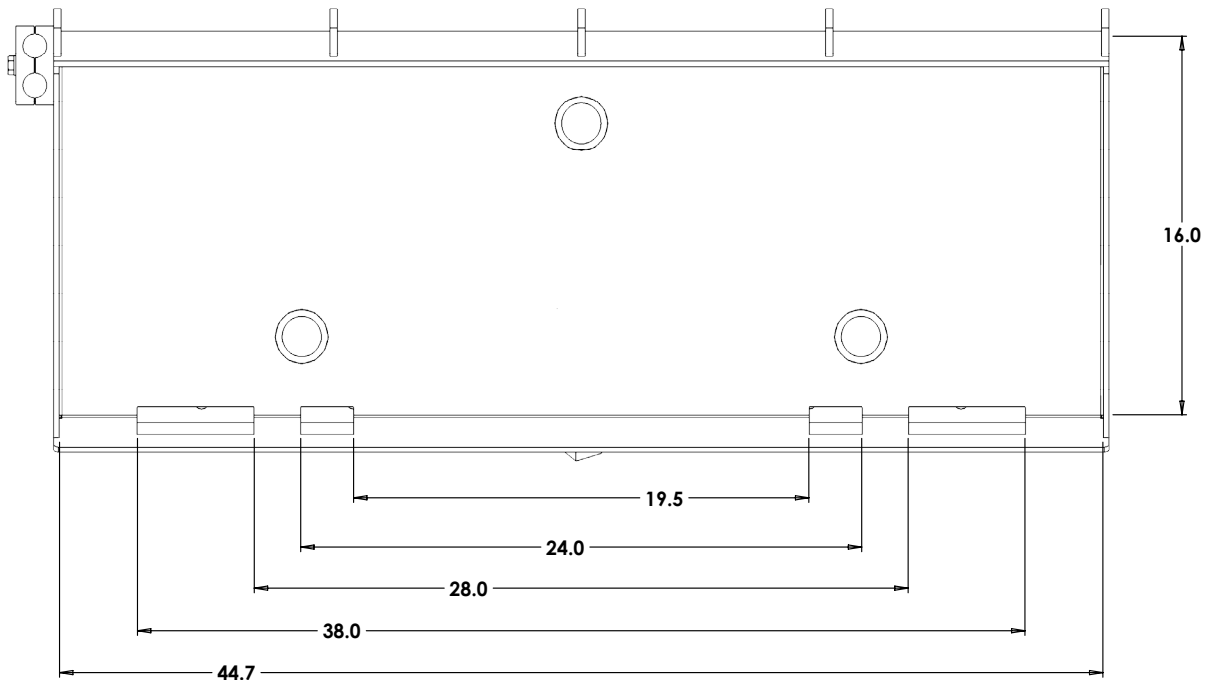
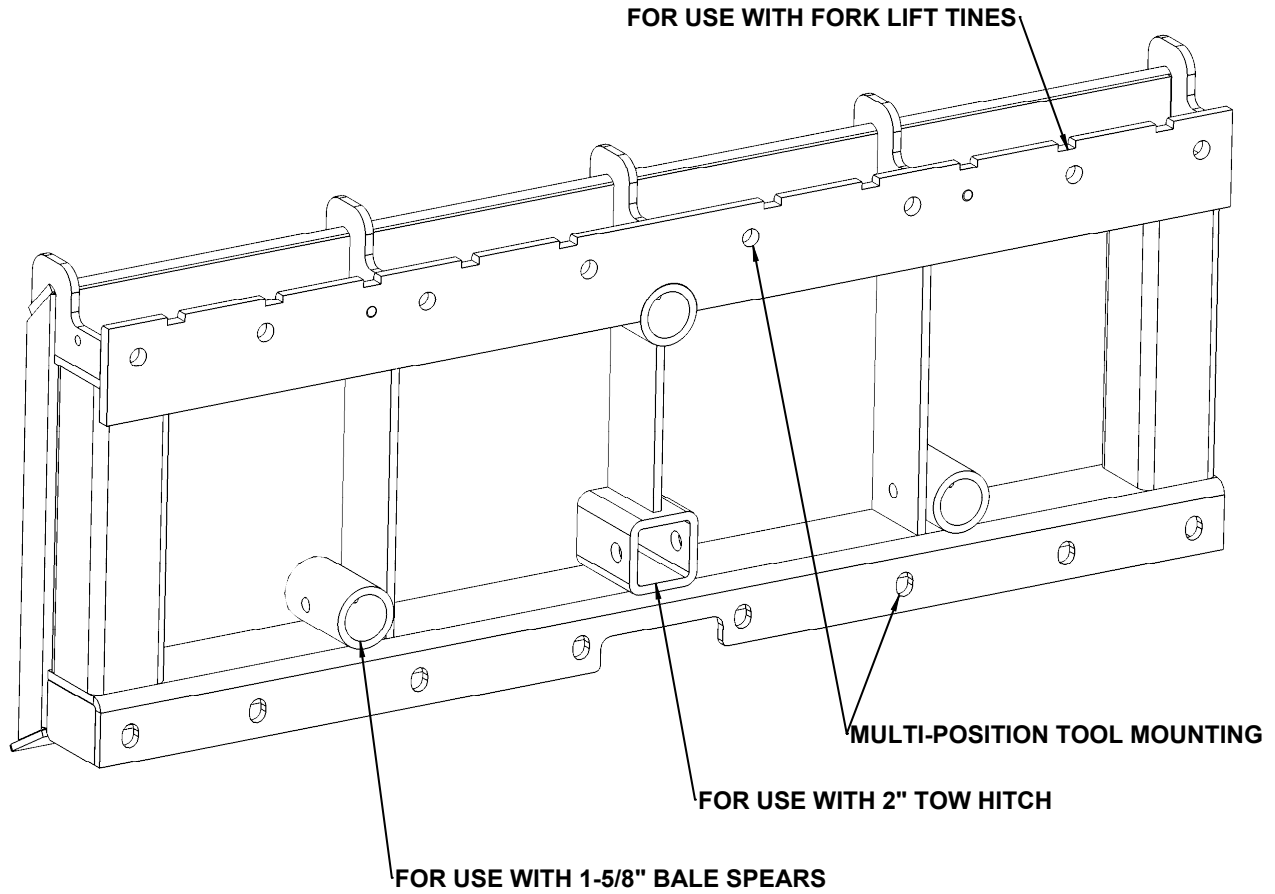
MODEL HP49					
VEHICLE FLOW (GPM)					
6	9	12	16	20	23
13	19	26	35	43	50
AUGER SPEED (RPM)					

MODEL HP49					
AUXILIARY PRESSURE (PSI)					
2000	2500	3000	3500	4000	4300
2549	3186	3823	4460	5097	5479
TORQUE (FT-LBS)					



SPECIFICATIONS

Universal Mounting Plate can be used on most skid steers and tractor front-end loaders with universal quick attach mounting compatibility.



WARRANTY INFORMATION

AgKNX limited warranty covers defects in manufacturing and workmanship for one year from date of purchase. The warranty gives the consumer certain and specific rights which may vary from state to state.

The warranty may be refused if the registration is not completed or date of purchase cannot be established. Register your product upon purchase for the best customer service experience.

Warranty does not cover normal wear, misuse, neglect, abuse, improper maintenance, overload beyond rated capacity, accidents, cosmetic defects, consumables, non-authorized replacement parts or accessories, operation with inadequate supply of gear box oil, improper fluid types, or unauthorized adjustments.

IMPORTANT NOTICE

We, the manufacturer, reserve the right to change the product and/or specifications in this manual without notification. The manual is for information use only and the pictures and drawings depicted herein are for reference only.

Warranty Repair and Service

Do not return this product to the store for warranty issues or repair. For warranty and repair service, call our customer service department at: (720) 437-7640

REGISTRATION INFORMATION

Acceptance of Responsibility:

I (the purchaser) have read the Operator's Manual and Limited Warranty (below) or someone has read and explained them to me. I understand this warranty does not cover any labor and that all disputes will be settled by binding arbitration. I understand that the warranty is void if any attempt to repair or replace defective parts has been made by unauthorized personnel. The mark next to each item below confirms my acceptance of responsibility for the use and maintenance of this device. I understand that I alone am responsible for the proper maintenance, care, and safe operation of this device.

I, the purchaser and/or operator, have:

- received, read, and understood this Operator's Manual
- understood all safety warnings
- accepted all specifications, and
- understood all maintenance and operations/performance requirements.

I (the purchaser) understand that persons who have not read and understood the operator's manual should not be allowed to use the machinery. Children should not operate or be near the equipment. Anyone operating the device must have first read, at a minimum, the general safety and operating instructions sections of this manual.

Owner / Purchaser Signature: _____

Is this device used by a business?

- Yes, business type: _____
- No

WARRANTY REGISTRATION

Register your product today for the best customer service experience!

WARRANTY REGISTRATION MAIL-IN INSTRUCTIONS:

To register your device:

1. Fill in the form (below) and the "acceptance of responsibility" page (reverse), cut it out,
2. Attach a copy of the receipt or other proof of purchase, and
3. Mail to:

Tool Tuff Direct
 15000 West 44th Ave,
 Suite B Golden, CO 80403

WARRANTY REGISTRATION FORM

Product: Skid-steer mounted Post Hole Digger
 AgKNX 24-0396

Device Serial #:		
Purchase date:		
Purchased from (Store / City):		
Purchaser:		
Purchaser address:		
City:	State:	Zip code:
Purchaser phone #:	E-mail:	

By registering for the limited warranty, I accept the terms of the "Acceptance of Responsibility" set forth above.

WARRANTY REGISTRATION BY E-MAIL

Warranty registration may be completed by legibly filling out the above information, take a photo or scan the Warranty registration page and emailing them to: warranty@tooltuffdirect.com
 Subject line of the warranty registration email should read: Skid Steer Post Hole Digger

WARRANTY REGISTRATION ONLINE

Registration may be completed by following the QR code below. Use the camera app on your smartphone in the same manner you would if you were taking a photo. Your smartphone will recognize the code, and a link will appear on the screen. Tap the link and you will be direct to the form on our website.







Questions? For service call:
(720) 437-7640