

PRODUCT CARE



Hand wash with mild detergent and water below 30°C without wringing.



Do not dry-clean.



Do not iron.



Do not wring the product : Wrist Brace with thumb Neoprene

EC REP

MT PromedT Consulting GmbH
Altenhofstrasse 80
D-66386 St. Ingbert
Germany
tel.: +49 (0) 6894 581020
fax: +49 (0) 6894 581021
e-mail: info@mt-procons.com
www.mt-procons.com

Symbol Explanation :



Batch code



Manufacturing date



Manufacturer



Catalogue number

Tynor Orthotics Pvt. Ltd.

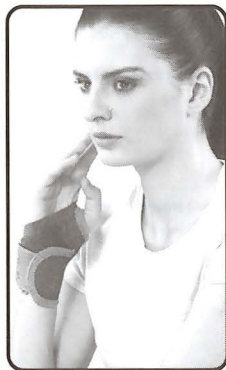
169-170, Sec 82, Ind. Area, JIPL, Mohali-160 055, (Pb) India
e-mail: marketing@tynorindia.com • www.tynorindia.com
Customer Care : 0091-172-5288111

ISO 9001-2008 | CRISI | W.H.O. G.M.P. | ISO 13485 | CE | US FDA registered

www.tynorindia.com

Wrist Brace With Thumb
रिस्ट ब्रेस विद थंब
Muñequera Con Férula Pulgar
Orthèse de poignet avec pouce
سناد المعصم مع الإبهام

REF E 06/J 03



**Wrist Brace
With Thumb**



**Wrist Brace
With Thumb (Neoprene)**

UM-E06/J03-18-1

USER MANUAL

How To Use
Cómo Utilizar



कैसे उपयोग करें
Comment utiliser:
كيفية الاستخدام



- 1.
- The thumb of the injured wrist is pushed out of the thumb hole.
 - घायल कलाई का अंगूठे को अंगूठे के सुराख के बाहर धकेला जाता है।
 - El producto se envu elve en torno a la muñeca.
 - Le pouce du poignet blessé est poussé hors du insert pouce.

• يتم دفع إبهام المعصم المصاب من ثقب الإبهام



- 2.
- The product is wrapped around the wrist.
 - इस उत्पाद को कलाई पर लपेटा जाता है।
 - El pulgar sale a través del agujero para pulgar.
 - Le produit est enroulé autour du poignet.

• يتم لف المنتج حول المعصم

How To Use
Cómo Utilizar



कैसे उपयोग करें
Comment utiliser:
كيفية الاستخدام



- 3.
- The hook is fastened to a comfortable compression.
 - हुक को सुविधाजनक दबाव पर कसा जाता है।
 - El gancho cierre se sujeta con una compresión confortable.
 - Le crochet est attaché à une compresión confortable.

• ربط مثبت بضغط مريحة.

Wrist Brace With Thumb

English

INTENDED USE :

Wrist brace with thumb supports, protects and partially immobilizes the wrist while allowing free and natural movement of the thumb and fingers. It compresses the area and retains the body heat to allay local pain and inflammation. It maintains the thumb in its neutral abduction position.

CONSTRUCTION:

Anatomical thumb opening is designed for slight abduction and comfort of the thumb.

Wrist Brace with thumb Neoprene : It is made out of three layered Neoprene bonded fabric, with a four way stretch, top layer with UBL offers the advantage of a very versatile closing system and a firm grip to the wrist. Inner layer made from strong nylon fabric ensures long life and good aesthetics..

Wrist Brace with thumb (elastic webbing) : It is made from strong, porous orthopedic webbing, which is hypoallergenic with a good resilience and long life

APPLICATIONS :

- Post operative and post cast care
- Bursitis, Tendonitis, Tenosynovitis
- Arthritic care of the wrist
- Prophylaxis in exercises and games

Other Applications for Wrist Brace with thumb Neoprene:

- Carpal tunnel syndrome
- Carpo-metacarpal joint injury
- Sprain and strain
- Ligamentous laxity of thumb

RECOMMENDATION :

- Use this product under strict guidance of a qualified doctor.

INSTRUCTIONS:

- Discontinue use and seek guidance of a qualified doctor, in case of
 - Impaired sensation
 - Impaired blood flow
 - Allergy rash or itching
 - Pain increases or persists
- Consult your doctor in case of concurrent use with any other medical device.
- Misuse or improper use of the device can lead to adverse effects and decreased effectiveness.
- Follow instructions mentioned on the box carefully.
- Keep out of reach of children.