

## PRODUCT CARE



Hand wash with mild detergent and water below 30°C without wringing.



Dry in shade on a flat surface.



Do not dry-clean.



Do not Iron.



Do not bleach.



Close hook loop fasteners before washing.

**EC REP**

MT Promed Consulting GmbH  
Altenhofstrasse 80  
D-66386 St. Ingbert  
Germany  
tel.: +49 (0) 6894 581020  
e-mail: info@mt-procons.com  
www.mt-procons.com

### Symbol Explanation :



Batch code



Manufacturing date



Manufacturer



Catalogue number

### Tynor Orthotics Pvt. Ltd.

169-170, Sec 82, Ind. Area, JLPL, Mohali-160 055, (Pb) India  
e-mail: marketing@tynorindia.com • www.tynorindia.com  
Customer Care : 0091-172-5288111

ISO  
9001



W.H.O.  
G.M.P.

ISO  
13485



US FDA  
registered

UM-A15-17-1

## Lumbo Support Uni

लम्बो सपोर्ट युनि

Corsé Lumbar Universal

حزام لدعم أسفل الظهر

**REF A 15**



www.tynorindia.com

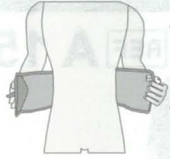
USER MANUAL

## How To Use Cómo Utilizar



## कैसे उपयोग करें كيفية الاستخدام

1.



- The belt is wrapped around the waist keeping it upright See "up inside" label.
- बैल्ट को कमर के चारों ओर लपेटा जाता है व बैल्ट को ऊपर की ओर सीधी रखें जैसे "ऊपर आंतरिक" लेबल पर लिखा है ।
- El cinturón se aplica en torno a la cintura en posición vertical. Ver etiqueta "up inside".
- يتم لف الحزام حول الخصر مع جعله متجها لأعلى، انظر ملصق "الاتجاه لأعلى".

2.



- The back panel be placed in the centre of the vertebral column, with lower edge of the belt coinciding with the base of the spine.
- पिछला हिस्सा कशेरुका के मध्य में रखा जाता है । व बैल्ट का निचा किनारा मेरुदन्ड के आधार के साथ मेल खाए ।
- Coloque el panel trasero en el centro de la columna vertebral, con el cabo inferior del cinturón coincidiendo con la base de la columna.
- يتم وضع اللوح الخلفي في مركز العمود الفقري مع جعل الطرف السفلي للحزام يتطابق مع قاعدة العمود الفقري.

3.



- Close hook loop fasteners to a comfortable compression.
- हुक लूप को आरामदायक संकुचन के लिए बंद करें ।
- Fije los cierres de velcro en el punto en que proporcionen una compresión confortable.
- قم بإغلاق مشابك حلقة الربط إلى الحد الذي يمنحك الضغط المريح.

## Lumbo Support Uni

English

**Lumbo Support Uni** is designed for convenience. It supports and immobilizes the lumbo sacral region and correct the postural deformity to allay low back pain syndrome. It has semi rigid contoured splints to enhance comfort on one hand and immobilization on the other.

### Construction:

Made from extra strong orthopedic webbing containing heat resistant rubber with high modulus of elasticity. Large hook loop panel facilitates in perfect fitting and flexibility of sizing. And also controlled compression, easy application and removal.

The tapering shape of the elastic panel at the back helps to cover and immobilize the lumbo sacral region effectively. Preshaped flexible stays integrated in the back panel help in providing the anatomically correct support to the lumbar area on one hand and comfort on the other.

### APPLICATIONS:

- Low back ache
- Inter vertebral disc syndrome
- Lumbar spondylitis
- Osteoporetic pain of the lumbar spine
- Postural fatigue, or postural deformities
- Comfort during long working hours and travel
- Stabilization during vertebral fracture and injuries
- Degenerative changes of the lumbar spine
- Weakened abdominal muscles



**CAUTION/RECOMMENDATION** : This is a general purpose lumbar immobilizer. One size fits all.

### INSTRUCTIONS: [1]

- Use this product on recommendation of a doctor.
- Discontinue use and seek guidance of a qualified doctor, in case of
  - Impaired sensation
  - Impaired blood flow
  - Allergy rash or itching
  - Pain increases or persists
- Consult your doctor in case of concurrent use of the device with excessive physical exertion, it can lead to restriction of performance of heart and lungs (risk of rise in blood pressure).
- Misuse or improper use of the device can lead to adverse effects and decreased effectiveness.
- Follow instructions mentioned on the box carefully.
- Keep out of reach of children.
- Product be preferably worn over a cotton lining or an under garment.