

PRODUCT CARE



Do not wash.



Wipe with a clean moist lint free cloth.

Tynor Orthotics Pvt. Ltd.

D-111, Industrial Area Phase-7, Mohali- 160 055, (Punjab) India

e-mail: marketing@tynorindia.com • www.tynorindia.com

Customer Care : 0091-172-4388111

UM-B20-14-1

ISO
9001



W.H.O.
G.M.P.

ISO
13485



US FDA
registered

tynor
Ergonomically yours

REF B 20

Cervical Collar Hard with Chin

सर्वाइकल कॉलर हार्ड विद चिन

Collar Cervical Rígido Duro Con Reposa Barbillas

طوق عنقي صلب مزود بحزام ذقني

User Manual

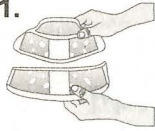


How To Use Cómo Utilizar



कैसे उपयोग करें كيفية الاستخدام

1.



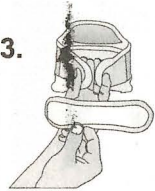
- Measure the neck height, look for the right size of the collar. Widen the two parts of collar to the exact measurement of the neck for a customized size.
- गर्दन की ऊँचाई मापें, पट्टे के माप आकार के लिए देखें।
- Medir la altura del cuello, ajustar el collar según el tamaño adecuado. Ensanchar las dos mitades del collar según la medida exacta del cuello del paciente.
- قم بقياس ارتفاع العنق واتبعه بالطول وذي الحجم المناسب.

2.



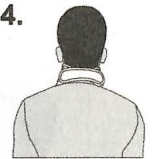
- Let the chin rest on the chin cup comfortably.
- अनुकूलित आकार के लिए गर्दन को यथार्थ माप के अनुसार पट्टे के दो भागों को चौड़ा करें।
- Dejar que la barbilla repose cómodamente sobre el reposa barbilla.
- قم بتوسيع جزئياً بطولاً قليلاً مع القياس الفعلي للرقبة للحصول على حجم مناسب.

3.



- Wrap it around the neck snugly.
- ठोड़ी कप में सुविधापूर्वक ठोड़ी को विश्राम दें, और तब इसे गर्दन के चारों ओर सुरक्षित ढंग से लपेटें।
- Poner el collar de manera que quede bien ceñido alrededor del cuello.
- دع القنينة تستند على الحزام الملائم لتثبيت الصور ثم راحة، ثم قم بلف الحزام حول الرقبة بقبالة الحزام.

4.



- Fasten hook to the loop tape to a comfortable fit.
- हुक को लूप फीते से आरामदायक फिट के लिए बांधें।
- Ajustar el cierre de velcro de manera confortable.
- قم بتثبيت جزئياً الشريط اللاصق على وضعه بجزء.

Cervical Collar Hard with Chin

English

Cervical Collar Hard with Chin is an excellent device to provide high degree of immobilization and support. It has been designed to improve immobilization by providing the chin lock. The molded chin cup gives an anatomic rest to the head/chin to enhance the comfort. Surprisingly, the collar is extremely comfortable despite made from hard and rigid materials, because of the advanced designing.

CONSTRUCTION:

Cervical Collar Hard with Chin is made out of polyethylene sheet, the edges are padded with molded Ethafoam round tube and covered with vinyl fabric of a superior GSM and quality. Ethafoam has the distinct advantage of a very high cushioning for improved patient comfort, is very light in weight, and has a long functional life. Anatomically molded chin cup is the highlighting feature of this collar, which on one hand provides the chin lock to enhance the immobilization and on the other provides a very uniform resting place for the head/chin to enhance the comfort. Air ventilation holes ensure proper air circulation, thereby improved comfort and compliance. Hook loop closure ensure close fitting of the collar around neck, its quick, easy application and removal. The height of the collar can be varied for accurate dimensional adjustments to suit the individual neck heights.

APPLICATIONS:

Recommended where a rigid immobilization of the cervical region is required

- Cervical Spondylitis
- Cervical disc disease
- Cervical Neuralgia
- Fractures of Cervical Spine
- Post operative care
- Severe trauma to the neck area
- Torticollis
- Post traction stabilization
- Treatment of whip lash injuries
- Other ortho/neuro conditions where rigid immobilization of the neck region is required.

CAUTION/RECOMMENDATION:

Height adjustment in collar should only be used for fine matching of the collar height to the neck height and not for sizing purpose.

INSTRUCTIONS: [1]

- Use this product on recommendation of a doctor.
- Discontinue use and seek guidance of a qualified doctor, in case of
 - Impaired sensation
 - Impaired blood flow
 - Allergy rash or itching
 - Pain increases or persists
- Consult your doctor in case of concurrent use with any other medical device.
- Misuse or improper use of the device can lead to adverse effects and decreased effectiveness.
- Follow instructions mentioned on the box carefully.
- Keep out of reach of children.