

USER MANUAL ENGLISH  
**2019 FOIL**



**CABRINHA** 

# **! WARNING**

DO NOT USE THIS PRODUCT UNLESS YOU HAVE READ AND UNDERSTAND THESE WARNINGS, CAUTIONS, AND INSTRUCTIONS WHICH ARE FOR YOUR SECURITY AND PROTECTION. THIS INFORMATION MAY BE SUBJECT TO CHANGE AT ANY TIME. FOR CURRENT UPDATES, PLEASE VISIT OUR WEBSITE AT: [WWW.CABRINHAKITES.COM](http://WWW.CABRINHAKITES.COM)

IF YOU ARE BELOW THE AGE OF 18, YOU SHOULD HAVE YOUR PARENT OR GUARDIAN READ THESE WARNINGS, CAUTIONS AND INSTRUCTIONS AND SHOULD NOT USE THIS PRODUCT UNLESS YOU ARE UNDER THE PROPER GUIDANCE AND SUPERVISION OF SUCH A PERSON.

The use of this product exposes the user to many unavoidable and unexpected risks, injury, DANGERS and HAZARDS. The suppliers of this product are not responsible for any damage to property or any personal injury caused by any use, misuse, abuse or irresponsible use of this product by the user.

Kiteboarding is a HAZARDOUS sport. Power kites and their lines and control equipment can be DANGEROUS to flyers and to anyone in the vicinity of their use. Kiteboarding must be taken seriously and we recommend that, at least in the early stages of your use, you seek the guidance of professional instructors and experienced kiteboarders. Improper and/or unreasonable use of this kite may result in DEATH or SERIOUS INJURY to ANY part of your body and to OTHERS. Do NOT use your kite near power lines, airports, buildings, automobiles, trees, streets, parking lots, rocks, piers, breakwaters, buoys, etc. and keep your kite fly lines away from people and ALL obstacles. Always fly in an open area and observe wind and weather conditions, particularly in circumstances where you may encounter offshore, onshore, variable or strong winds. Do NOT attempt to use your kite on water until you are confident and comfortable with the use of a trainer kite on land. Spend time to become familiar with the operation of your kite and remember that you are responsible for its operation and for the security of those around you. As you learn the sport, work within your own limitations and do NOT exceed them. If you intend to use the kite on water, always use appropriate protective gears and flotation devices and do NOT attach yourself or tie yourself permanently to the kite lines. The kite is NOT intended for use as a flying device nor indeed is it intended as a means of flotation.

# **! WARNING**

## **RECOMMENDED KITEBOARDING PRACTICE:**

Kiteboarding is an extremely diverse sport, with many disciplines and ability levels. As with all sports, there can be certain inherent risks. The following contains key security points to remember when operating your Cabrinha kite.

- Kiteboarding is a **HAZARDOUS** activity and the use of Kiteboarding equipment involves the risk of serious personal injury to any part of the user's body, or death.
- Injuries are an **INHERENT RISK** of kiteboarding and the participation in kiteboarding implies the user's acceptance and assumption of those risks.
- Children should **ALWAYS** be under adult supervision.
- It is strongly recommended that beginners take lessons.
- **ALWAYS** inspect your equipment for signs of wear and tear each time before use, particularly all lines, canopy, bladders, screws and fittings.
- If **ANY** products are found to show signs of wear & tear, **STOP** using the product immediately and repair or replace before further use. If in doubt about any signs of wear & tear, please contact your local vendor. Contact details are available from [www.cabrinhakites.com](http://www.cabrinhakites.com)
- **NEVER** place yourself in a situation where breakage of any one of the various kiteboarding components would pose a risk to yourself or others, or make it difficult to return to the shore securely & unassisted.
- Make sure you use properly designed and manufactured parts from reputable suppliers.
- Take time to study the conditions including sea state, tides, currents, weather conditions and forecasts before you decide to go sailing. Beware of sailing in offshore, onshore, variable or strong winds.
- Familiarize yourself with any new location before venturing onto the water. Ask the locals to tell you about any hazards.
- Watch out for other beach users, especially swimmers and small children. Make sure you keep your board and rig under control at all times and that they don't get blown about on the beach or in the water.
- Always use appropriate protective gear and flotation devices. Wear the correct protective clothing for the conditions such as a wetsuit or a UV top.
- We **STRONGLY** recommend wearing a kiteboarding specific helmet
- Make sure someone knows where you've gone & when you are expected back – always sail with a buddy.
- Be aware of the conditions as they change. **ALWAYS** return to the beach if there is a significant change in the conditions. i.e. wind dropping or wind & waves increasing.
- As you learn the sport, work within your own limitations and do **NOT** exceed them.
- Do **NOT** alter, modify or change this product.
- This product is designed and manufactured only for kiteboarding on water or snow.
- Keep these warnings, cautions and instructions for future reference.

## CONTENTS

---



- 1 Foil Kit Installation (HI-RISE LIFT / HI-RISE SPEED)
- 4 Foil Kit Installation (HI-RISE CARVE / HI-RISE VARIAL)
- 8 Board and Accessories Installation
- 11 Foil Care Instructions

## FOIL KIT INSTALLATION

# HI:RISE SPEED HI:RISE LIFT

### INVENTORY LIST:

1. Front Wing (Speed or Lift)
2. Rear Wing (Speed or Lift)
3. Fuselage
4. Mast
5. Foil Top Plate
6. Mast mounting screws 40mm x 4
7. Board mounting screws 25 mm x 4
8. Rear wing screws: 14mm x2
9. Front wing screws: 25mm x1, 27mm x1
10. Allen key
11. Anti-seize grease

### Not included in Foil Kit:

12. Track mount screws x4 (X-Breed)
13. Track mount nuts x4 (X-Breed)



### INSTALLATION:

1. Unpack contents and ensure all necessary parts are present to complete assembly. Using the supplied hardware lubricant, dab a small amount of the anti-seize grease onto the threads of the rear two holes of the fuselage.
2. Attach the rear wing as shown with the two 14mm (LIFT) or 16mm (SPEED) screws in the pack. Tighten by hand using the supplied allen wrench. Never use power tools.
3. Using the supplied hardware lubricant, dab a small amount of the anti-seize grease onto the threads of the front two holes of the fuselage.
4. Attach the front wing as shown with the 25mm (rear) & 27mm (front) screws in the pack. Tighten by hand using the supplied allen wrench.



FIG 1



FIG 2



FIG 3



FIG 4

## FOIL KIT INSTALLATION

5. Using the supplied hardware lubricant, dab a small amount of the anti-seize grease onto the threads of the two holes in the top of the mast.

6. Attach the foil top plate to the top of the mast using two of the 40mm screws in the pack. Tighten by hand using the supplied allen wrench.

7. Using the supplied hardware lubricant, dab a small amount of the anti-seize grease onto the threads of the two holes in the bottom of the mast.

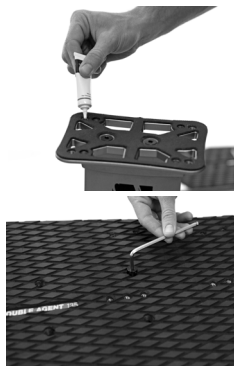
8. Attach the fuselage to the bottom of the mast using remaining two 40mm screws in the pack. Tighten by hand using the supplied allen wrench.

**CAUTION: DO NOT OVER TIGHTEN THE BOLTS AS THIS WILL DAMAGE THE FOIL OR THE BOARD.**



### MOUNTING TO THE DOUBLE AGENT

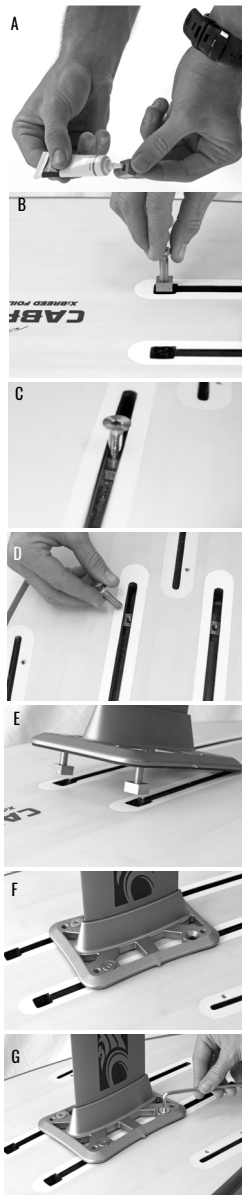
- Dab a small amount of the anti-seize grease onto the threads of the four threaded holes in the foil top plate.
- Attach the Double Agent board to foil top plate using the four supplied 25mm screws. Tighten by hand using the supplied allen wrench.



# FOIL KIT INSTALLATION

## MOUNTING TO THE X-BREED FOIL

- Remove the mounting hardware which is stored inside the tracks in the bottom of the board and dab a small amount of the anti-seize grease onto the threads of the four brass nuts. (A)
- Start two of the brass nuts onto the screws by just a couple turns. (B)
- Use the screw head to insert the nut into both of the tracks (one each) and slide down near the end. (C)
- Unscrew and leave the brass nuts sitting near the bottom of each track. (D)
- Insert a screw into both of the non-threaded front holes of the foil top plate and attach both of the brass nuts with only a couple of turns so they can drop into the track. (E)
- With the foil top plate aligned as shown, drop both front fittings into the track and slide back into the desired position. Foil further toward the nose will produce more lift (nose up). Foil further towards the tail will produce less lift (nose down). (F)
- Guide the rear two brass nuts up into position to align with the rear screws and tighten all four down evenly. (G) Your foil board is now ready to ride. Get out there and enjoy the glide!

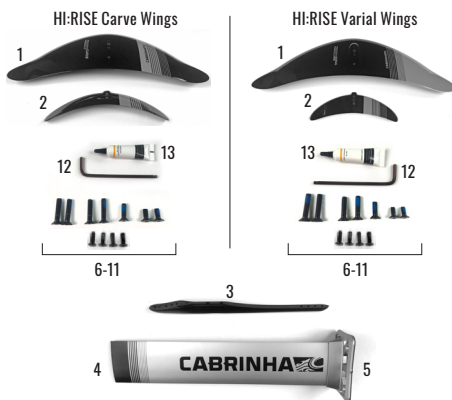


## FOIL KIT INSTALLATION

# HI:RISE CARVE HI:RISE VARIAL

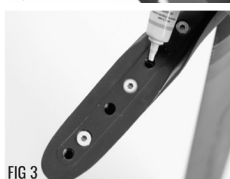
### INVENTORY LIST:

1. Front Wing (Carve or Varial)
2. Rear Wing (Carve or Varial)
3. Fuselage
4. Mast
5. Foil Top Plate
6. Mast / Socket Screws 40mm x 2
7. Mast / Fuselage Screws 40mm x 2
8. Rear wing screws (Carve):  
Front Hole - 38mm, Middle Hole - 38mm, Rear Hole - 27mm
9. Rear wing screws (Varial):  
Front Hole - 35mm, Middle Hole - 35mm, Rear Hole - 25mm
10. Front wing screws (Carve or Varial):  
Front Hole - 20mm, Rear Hole - 20mm
11. Wood core screw set (for Double Agent) - 25mm x 4
12. Allen key
13. Anti-seize grease



### INSTALLATION:

1. Apply a small amount of the supplied anti-seize grease into the rear fuselage threads for the two holes you've selected for mounting to the tail wing. Further forward = Added maneuverability. Further back = More stability.
2. Attach the rear wing as shown with the appropriate hardware matching the labels at each mounting hole.
3. Apply a small amount of the supplied anti-seize grease into the front three holes of the fuselage.
4. Attach the front wing as shown with the appropriate hardware matching the labels at each mounting hole. The print is to scale and can be used to measure each screw.





# FOIL KIT INSTALLATION

## INSTALLATION (CONT.)

5. Using the supplied hardware lubricant, dab a small amount of the anti-seize grease onto the threads of the two holes in the top of the mast.



6. Attach the foil top plate to the top of the mast using two of the 40mm screws in the pack. Tighten by hand using the supplied allen wrench.



7. Using the supplied hardware lubricant, apply a small amount of the anti-seize grease onto the threads of the two holes in the bottom of the mast.



8. Attach the fuselage to the bottom of the mast using remaining two 40mm screws in the pack. Tighten by hand using the supplied allen wrench.



**CAUTION: DO NOT OVER TIGHTEN THE BOLTS AS THIS WILL DAMAGE THE FOIL OR THE BOARD.**

PLEASE MAKE SURE THE CORRECT SIZED SCREW IS USED, IN ACCORDANCE WITH THE SCREW GUIDE TABLE BELOW:

Model	Mast size(s)	Wing size(s)	Thread	Mast / socket	Mast / Fuselage	Front wing			Rear Wing	
						Front hole	Middle hole	Rear hole	Front hole	Rear hole
2019 Carve Kit	85 or 65cm	STD	m8	40 (x2) attached	40 (x2)	38	38	27	20	20
2019 Varial Foil Kit	85 or 65cm	SML	m8	40 (x2) attached	40 (x2)	35	35	25	20	20
2019 Varial Foil Kit	65cm	MED	m8	40 (x2) attached	40 (x2)	35	35	25	20	20
2019 Varial Foil Kit	65cm	LRG	m8	40 (x2) attached	40 (x2)	35	35	25	20	20

---

## FOIL KIT INSTALLATION

### MOUNTING TO THE DOUBLE AGENT:

1. Apply a small amount of the anti-seize grease onto the threads of the four threaded holes in the foil top plate.



FIG 1

2. Attach the Double Agent board to foil top plate using the four supplied 25mm screws. Tighten by hand using the supplied allen wrench.

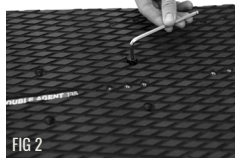
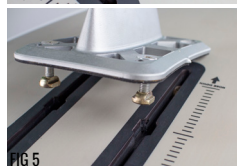


FIG 2

# FOIL KIT INSTALLATION

## MOUNTING TO THE X-BREED FOIL

1. Remove the mounting hardware which is stored inside the tracks in the bottom of the board and dab a small amount of the anti-seize grease onto the threads of the four brass nuts.
2. Start two of the brass nuts onto the screws by just a couple turns.
3. Use the screw head to insert the nut into both of the tracks (one each) and slide down near the end.
4. Unscrew and leave the brass nuts sitting near the bottom of each track.
5. Insert a screw into both of the non-threaded front holes of the foil top plate and attach both of the brass nuts with only a couple of turns so they can drop into the track.
6. With the foil top plate aligned as shown, drop both front fittings into the track and slide back into the desired position. Foil further toward the nose will produce more lift (nose up). Foil further towards the tail will produce less lift (nose down).
7. Guide the rear two brass nuts up into position to align with the rear screws and tighten all four down evenly. Your foil board is now ready to ride. Get out there and enjoy the glide!



# BOARD AND ACCESSORIES INSTALLATION

## MOUNTING STRAPS TO YOUR FOIL BOARD

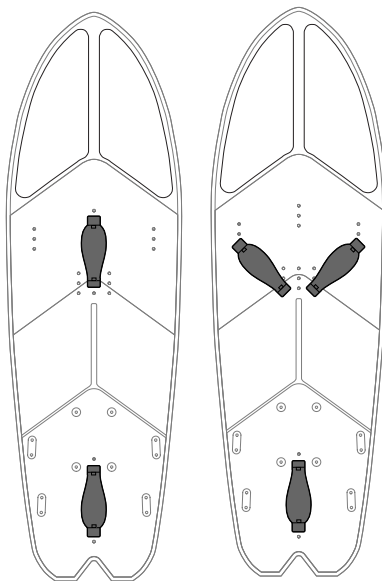
### TOOLS NEEDED:

PH3 Screwdriver & 5mm Hex Key.

### NOTE:

Cabrinha Ultralight Straps sold separately.

1. Identify the correct orientation of each strap. The Cabrinha Ultralight Straps are designed to have the wider section of the strap facing out toward the tip and tail of the board. This orientation can be adjusted to fit loose so as to allow easier twisting of either foot while offering maximum comfort and performance. Those who desire a tighter, more locked in feel may prefer the wider portion of the strap over the inside of the foot instead.
2. Place the footstrap washer on the ends of the straps under the cover.
3. Thread one of the mounting screws into the anti-twist.
4. Screw the strap into place on the board in the desired location making sure the screw is tight.
5. Repeat this process for the other side, then for the other strap accordingly.



### CAUTION:

DO NOT OVER TIGHTEN THE SCREW AS THIS WILL DAMAGE THE INSERTS OR THE STRAPS.

# BOARD AND ACCESSORIES INSTALLATION

## MOUNTING FINS TO THE DOUBLE AGENT

### INVENTORY LIST

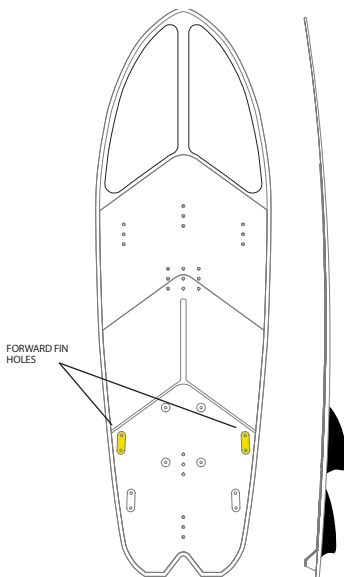
- (1) Double Agent board
- (1) set of fins plus screws (2x 30mm and 2x 50mm fins)
- (1) Sticker Pack
- (8) M6x 25mm screws

1. Remove all contents from the accessory package. Identify each item from the inventory list above. Identify the fins in the pack, the two sizes and the correct orientation of each fin.
2. Starting on the 50mm forward fins, place the 2 bolts through the forward fins holes from the top of the board (see image for reference).
3. Place the 50mm fin under the board in the correct orientation with pointy side facing the front of the board and line up the holes with the bolts that are protruding through the board base.
4. Tighten the bolts hand tight using a 5mm Hex Key.
5. Repeat this step for the remaining 50mm Fin.
6. Repeat steps 2-5 using the rear locations on the board for the 30mm fins.

**CAUTION: DO NOT OVER TIGHTEN THE SCREW AS THIS WILL DAMAGE THE BOARD OR THE FINS**

### HOLE PLUGS

The hole plugs are used to cover the holes of either the fins or the mast mount when they are not in use. No tools are required to install the hole plugs, to remove the plugs we suggest you use the 5mm hex key to push them out. 8mm plugs are suitable to plug the mast mount holes. 6mm plugs are suitable to plug the fin holes. Hole plugs can inadvertently fall out during riding, extras are supplied accordingly.



# BOARD AND ACCESSORIES INSTALLATION

---

## MOUNTING FINS TO THE X-BREED FOIL

### INVENTORY LIST

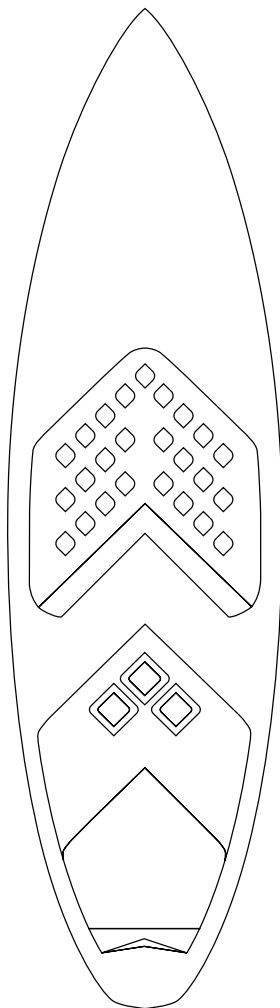
- (1) X-Breed foil board
- (3) Surf RTM hybrid bamboo/soric fins + screws
- (1) Fin Key
- (1) Front and Rear deck pad
- (1) Sticker Pack

### TOOLS NEEDED

Fin Key (supplied)

**CAUTION:** Do not use power tools to assemble your board. You will run the risk of cross threading or stripping the inserts. Doing so will void your warranty.

1. Remove all contents from the accessory packaging attached to the board. Identify each item from the inventory list above.
2. Identify the correct orientation of each fin. (Side fins have the rounded side of the foil, facing out towards the rail)
3. Using the provided fin key, un-tighten the fin screws on the bottom of the board (situated at the side of the box). Do this until you can see that there is clearance for the fin to enter the fin box).
4. Insert the fin. Tighten the screws finger tight. Please be aware of overtightening the screws.



## FOIL AND BOARD CARE INSTRUCTIONS

---

### TO GIVE YOUR BOARD A LONG LIFE

- Use recommended Cabrinha fins, foot straps and accessories.
- Do not use any power tools to install any of the hardware and accessories; doing so will void the warranty.
- Tighten all screws firmly, but do not over tighten.
- The screws are subject to extreme loads and forces, and should be checked regularly if still tight.
- Regularly check your board and wings for holes, coming from any damage.
- Rinse with fresh water after each use.
- Disassemble and rinse with fresh water before prolonged storage.
- In case you find any damage make sure these are sealed and fixed properly before further use.
- Store your Cabrinha board in a board bag to prevent unnecessary sun exposure, scratches and other wear and tear while the board is not in use.
- Store your Cabrinha Foil in a Foil Bag when not in use, to prevent unnecessary sun exposure, scratches and other wear.
- While this Cabrinha board and accessories has been built tough, it is not indestructible. Direct impact with a hard object such as a rock or reef can damage the board, mast and wings; such damage is not coverable by warranty.

