

USER MANUAL ENGLISH

01 FALL FUSION FOIL



CABRINHA 

A WARNING

DO NOT USE THIS PRODUCT UNLESS YOU HAVE READ AND UNDERSTAND THESE WARNINGS, CAUTIONS, AND INSTRUCTIONS WHICH ARE FOR YOUR SECURITY AND PROTECTION. THIS INFORMATION MAY BE SUBJECT TO CHANGE AT ANY TIME. FOR CURRENT UPDATES, PLEASE VISIT OUR WEBSITE AT: WWW.CABRINHAKITES.COM

IF YOU ARE BELOW THE AGE OF 18, YOU SHOULD HAVE YOUR PARENT OR GUARDIAN READ THESE WARNINGS, CAUTIONS AND INSTRUCTIONS AND SHOULD NOT USE THIS PRODUCT UNLESS YOU ARE UNDER THE PROPER GUIDANCE AND SUPERVISION OF SUCH A PERSON.

The use of this product exposes the user to many unavoidable and unexpected risks, injury, DANGERS and HAZARDS. The suppliers of this product are not responsible for any damage to property or any personal injury caused by any use, misuse, abuse or irresponsible use of this product by the user.

Kiteboarding is a HAZARDOUS sport. Power kites and their lines and control equipment can be DANGEROUS to flyers and to anyone in the vicinity of their use. Kiteboarding must be taken seriously and we recommend that, at least in the early stages of your use, you seek the guidance of professional instructors and experienced kiteboarders. Improper and/or unreasonable use of this kite may result in DEATH or SERIOUS INJURY to ANY part of your body and to OTHERS. Do NOT use your kite near power lines, airports, buildings, automobiles, trees, streets, parking lots, rocks, piers, breakwaters, buoys, etc. and keep your kite fly lines away from people and ALL obstacles. Always fly in an open area and observe wind and weather conditions, particularly in circumstances where you may encounter offshore, onshore, variable or strong winds. Do NOT attempt to use your kite on water until you are confident and comfortable with the use of a trainer kite on land. Spend time to become familiar with the operation of your kite and remember that you are responsible for its operation and for the security of those around you. As you learn the sport, work within your own limitations and do NOT exceed them. If you intend to use the kite on water, always use appropriate protective gears and flotation devices and do NOT attach yourself or tie yourself permanently to the kite lines. The kite is NOT intended for use as a flying device nor indeed is it intended as a means of flotation.

A WARNING

RECOMMENDED KITEBOARDING PRACTICE:

Kiteboarding is an extremely diverse sport, with many disciplines and ability levels. As with all sports, there can be certain inherent risks. The following contains key security points to remember when operating your Cabrinha kite.

- Kiteboarding is a **HAZARDOUS** activity and the use of Kiteboarding equipment involves the risk of serious personal injury to any part of the user's body, or death.
- Injuries are an **INHERENT RISK** of kiteboarding and the participation in kiteboarding implies the user's acceptance and assumption of those risks.
- Children should **ALWAYS** be under adult supervision.
- It is strongly recommended that beginners take lessons.
- **ALWAYS** inspect your equipment for signs of wear and tear each time before use, particularly all lines, canopy, bladders, screws and fittings.
- If **ANY** products are found to show signs of wear & tear, **STOP** using the product immediately and repair or replace before further use. If in doubt about any signs of wear & tear, please contact your local vendor. Contact details are available from www.cabrinhakites.com
- **NEVER** place yourself in a situation where breakage of any one of the various kiteboarding components would pose a risk to yourself or others, or make it difficult to return to the shore securely & unassisted.
- Make sure you use properly designed and manufactured parts from reputable suppliers.
- Take time to study the conditions including sea state, tides, currents, weather conditions and forecasts before you decide to go sailing. Beware of sailing in offshore, onshore, variable or strong winds.
- Familiarize yourself with any new location before venturing onto the water. Ask the locals to tell you about any hazards.
- Watch out for other beach users, especially swimmers and small children. Make sure you keep your board and rig under control at all times and that they don't get blown about on the beach or in the water.
- Always use appropriate protective gear and flotation devices. Wear the correct protective clothing for the conditions such as a wetsuit or a UV top.
- We **STRONGLY** recommend wearing a kiteboarding specific helmet
- Make sure someone knows where you've gone & when you are expected back – always sail with a buddy.
- Be aware of the conditions as they change. **ALWAYS** return to the beach if there is a significant change in the conditions. i.e. wind dropping or wind & waves increasing.
- As you learn the sport, work within your own limitations and do **NOT** exceed them.
- Do **NOT** alter, modify or change this product.
- This product is designed and manufactured only for kiteboarding on water or snow.
- Keep these warnings, cautions and instructions for future reference.

A WARNING

DANGERS FROM THE KITEBOARD AND FOIL

Kite foilboarding is a sport that carries a lot of risk and can be incredibly dangerous if performed incorrectly. This could result in serious injury and/or death of the user or others in close proximity. Individuals using the Cabrinha foil must be aware of the dangers involved such as losing control, being hit by the board, even drowning. As some of the foil's components are incredible sharp and potentially hazardous, extra care must be taken at all times, from assembling to riding in order to avoid injury to the user and others.

The Cabrinha foil comes with detailed product information. you must read all material concerning warnings, assembling, maintenance and care of the foil prior to use. We will not accept any liability for those who choose not to follow our requirements.

We recommend that you always wear a certified helmet as well as an approved impact/life/protection vest, neoprene wetsuit and shoes.

Do not surpass your foiling capabilities and always maintain control of the foil.

Ride within your limits and do not use at speeds that exceed your comfort zone.

Be aware and familiarise yourself with your surroundings. do not put yourself or other water users in danger by riding close to swimmers, boats, docks and other objects that could interfere with you and your foil.

Do not use the foil in shallow waters as it will cause harm to both, you and your gear. Also, be aware that the components that make up this product are exposed to natural forces and are subject to wear and tear. only use Cabrinha approved replacement parts for repairs and adjustments.

Check your foil each time you ride, and ensure that the screws are tightened with the tightening torque as described in this manual.

Failure to follow these instructions may increase the risk of serious personal injury or death, damage to the product, or both.

We accept no liability.

By purchasing the Cabrinha foil you are agreeing to take full responsibility, and Cabrinha is entirely free from any liability, including financial responsibility for injuries or death incurred, regardless of whether injuries are caused by negligence or any use not consistent with our instructions.

CONTENTS

CABRINHA

- 1 Foil Kit Inventory / Assembly with the Board - Fusion Hybrid, Fusion Carbon and Fusion DA
- 3 Mast, Rear Fuselage and Wings Assembly - Fusion Hybrid and Fusion Carbon
- 4 Mast, Rear Fuselage and Wings Assembly - Fusion DA
- 5 Foil and Board Care Instructions

FOIL KITS

FUSION HYBRID

INVENTORY:-

1. Alloy mast (70cm or 90cm)
 2. Aluminium rear fuselage
 3. 4 x m6 x 30 screws
 4. 1 x m6 x 25 screw
 5. T30 & T 40 torx T-handle wrench
- (See page 3 for mast, rear fuselage and wings assembly)

FUSION WINGS/STABILIZERS

INVENTORY:-

1. X Series Wings - Wing Covers 3 m6 x 30 screws
2. X Series Stabilizers - Wing Covers 2 m6 x 16 screws
3. H Series Wings - Wing covers
4. H Series Stabilizers - Wing covers, 2pcs m6 ss316 torx Ti coated screws

FUSION CARBON

INVENTORY:-

1. Carbon Mast (70cm)
 2. 3 x mast threaded inserts
 3. 4 x m6 x 30 screws
 4. 1 x m6 x 25 screw
 5. Carbon Rear Fuselage
 6. T30 & T40 torx T-handle wrench
- (See page 3 for mast, rear fuselage and wings assembly)

FUSION DA

INVENTORY:-

1. Front Wing
 2. Stabilizer
 3. 700mm alloy mast (silver anodizing)
 4. DA Fuselage
 5. Fixed top plate with rubber backing
 6. 6 x m6 30mm screws
 7. 4 x m8 20mm screws
 8. Torx tool T30/40
 9. 4 x m8 helicoil inserts (fuselage)
- (See page 4 for mast, rear fuselage and wings assembly)

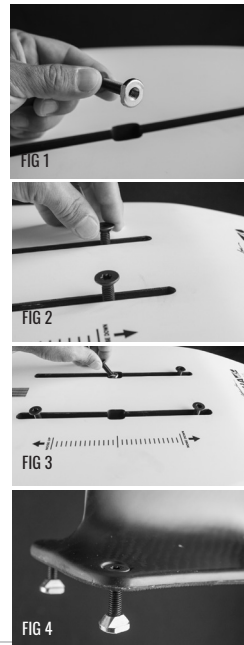
NOTE:

Board Mounting screws sold with board.
Mast / board assembly - T40 torx T-handle wrench
Foil assembly - T30 torx T-handle wrench

FOIL KIT INSTALLATION - ASSEMBLY WITH THE BOARD

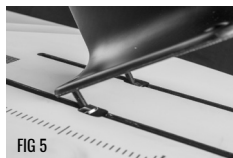
AUTOPILOT, X-BREED FOIL, CUTLASS FOIL, CROSSFLY, MACRO BOARDS:

1. Locate and confirm foil mounting hardware (4 hex bolts and 4 T-nuts).
2. Start two of the brass nuts onto the screws by just a couple turns (Fig 1).
3. Use the screw head to insert the nut into both of the tracks (one each) and slide down near the end. (Fig 2).
4. Unscrew and leave the brass nuts sitting near the bottom of each track. For Alloy top plate, repeat this process for 2 remaining screws as shown in Fig 3.
5. Insert a screw into both of the counter sunk front holes of the Carbon foil top plate and attach both of the brass nuts with only a couple of turns so they can drop into the track. (Fig 4).

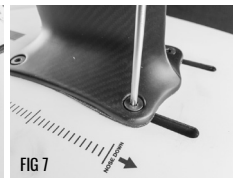
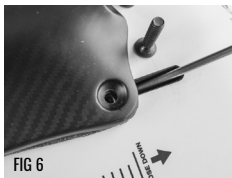


FOIL KIT INSTALLATION - ASSEMBLY WITH THE BOARD

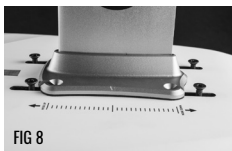
6. With the foil top plate aligned as shown, drop both front fittings into the track and slide back into the desired position. Foil further toward the nose will produce more lift (nose up). Foil further towards the tail will produce less lift (nose down). (Fig 5).



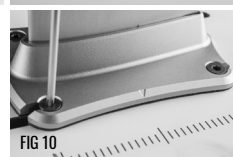
7. Guide the rear two T nuts up into position to align with the rear screws and tighten all four down evenly. (Fig 6 and 7)



8. Align the alloy top plate to match the top of the mast and slide it on. The fit is snug so apply pressure evenly. With the top plate in place, insert and tighten down the 3 M6 screws a little at a time to progressively seat the two parts together.



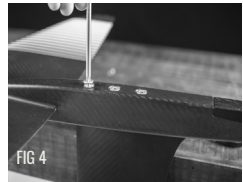
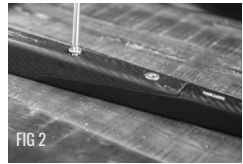
9. For Alloy plate, align into desired position on top of tracks. Slide hex bolts over grooves and into counter-sunk holes (Fig 8 and 9).



10. Tighten all 4 bolts down evenly. (Fig 10).

MAST, REAR FUSELAGE AND X SERIES WINGS ASSEMBLY - FUSION HYBRID & FUSION CARBON

1. Join the rear fuselage with your front wing fuselage using the indexed fit to help slot together.
2. Fasten the rear fuselage securely by using the supplied 30mm and 24mm m6 screws. Tighten by hand using the supplied T30 Torx T-handle wrench. **DO NOT OVERTIGHTEN.**
3. Attach the stabilizer (rear wing) as shown with the m6 x 15mm screws, using your T30 Torx T-handle wrench.
4. Slot the mast into the fuselage connection and tighten the 3 pcs m6 x 30mm screws.
5. Your setup is now complete and your foil is ready to fly!



NOTE: WINGS SOLD SEPARATELY

MAST, REAR FUSELAGE AND WINGS ASSEMBLY - FUSION DA

1. Slot the mast into the fuselage connection and tighten the 3 pcs m6 30mm screws. (FIG 1)

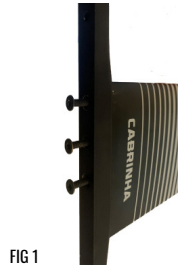


FIG 1

2. Attach the stabilizer (rear wing) as shown with 2 x m8 20mm screws, using your T40 Torx T-handle wrench (FIG 2)



FIG 2

3. Attach the front wing as shown with 2 x m8 20mm screws, using your T40 Torx T-handle wrench (FIG 3)



FIG 3

4. Your setup is now complete and your foil is ready to fly!

FOIL AND BOARD CARE INSTRUCTIONS

TO GIVE YOUR BOARD AND FOIL A LONG LIFE

- Use recommended Cabrinha fins, foot straps and accessories.
- Do not use any power tools to install any of the hardware and accessories; doing so will void the warranty.
- Tighten all screws firmly, but do not over tighten.
- The screws are subject to extreme loads and forces, and should be checked regularly if still tight.
- Regularly check your board and wings for holes, coming from any damage.
- Rinse with fresh water after each use.
- Disassemble and rinse with fresh water before prolonged storage.
- In case you find any damage make sure these are sealed and fixed properly before further use.
- Store your Cabrinha board in a board bag to prevent unnecessary sun exposure, scratches and other wear and tear while the board is not in use.
- Store your Cabrinha Foil in a Foil Bag when not in use, to prevent unnecessary sun exposure, scratches and other wear.
- While this Cabrinha board and accessories has been built tough, it is not indestructible. Direct impact with a hard object such as a rock or reef can damage the board, mast and wings; such damage is not coverable by warranty.

