

**3**

**MANUAL**

**EDILGRAPPA**

**ELECTRIC  
CHAIN CUTTER  
TC32**

**SPARE PARTS**

**CONTENTS**

**0.01 ORDERING INFORMATION..... 3**  
**0.02 MECHANICAL AND ELECTRICAL COMPONENTS ..... 3**

## 0 SPARE PARTS AND ACCESSORIES CATALOGUE



**THE COMPANY DECLINES ALL LIABILITY FOR INJURY TO PEOPLE OR DAMAGE TO PROPERTY IF TECHNICAL ASSISTANCE IS NOT PERFORMED BY QUALIFIED AND AUTHORISED STAFF.**

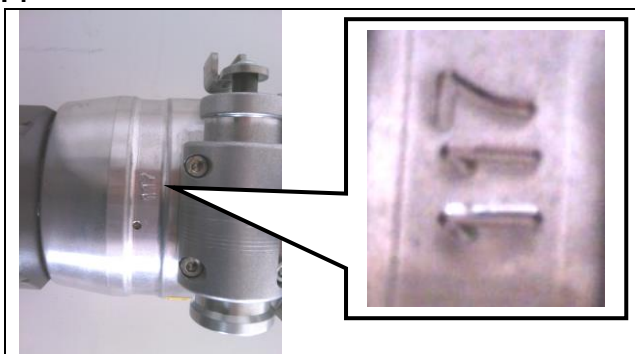


**FOR TECHNICAL ASSISTANCE AND MAINTENANCE, CONTACT AN AUTHORISED SERVICE CENTRE OR WRITE TO [cut@edilgrappa.com](mailto:cut@edilgrappa.com).**

### 0.01 ORDERING INFORMATION

For technical assistance and spare parts, both during and after the period of warranty, quote the data indicated on the ID plates and the serial number punched on the tool body (fig. 1)

**Fig. 1**



Orders for spare parts must be accompanied by the following information:

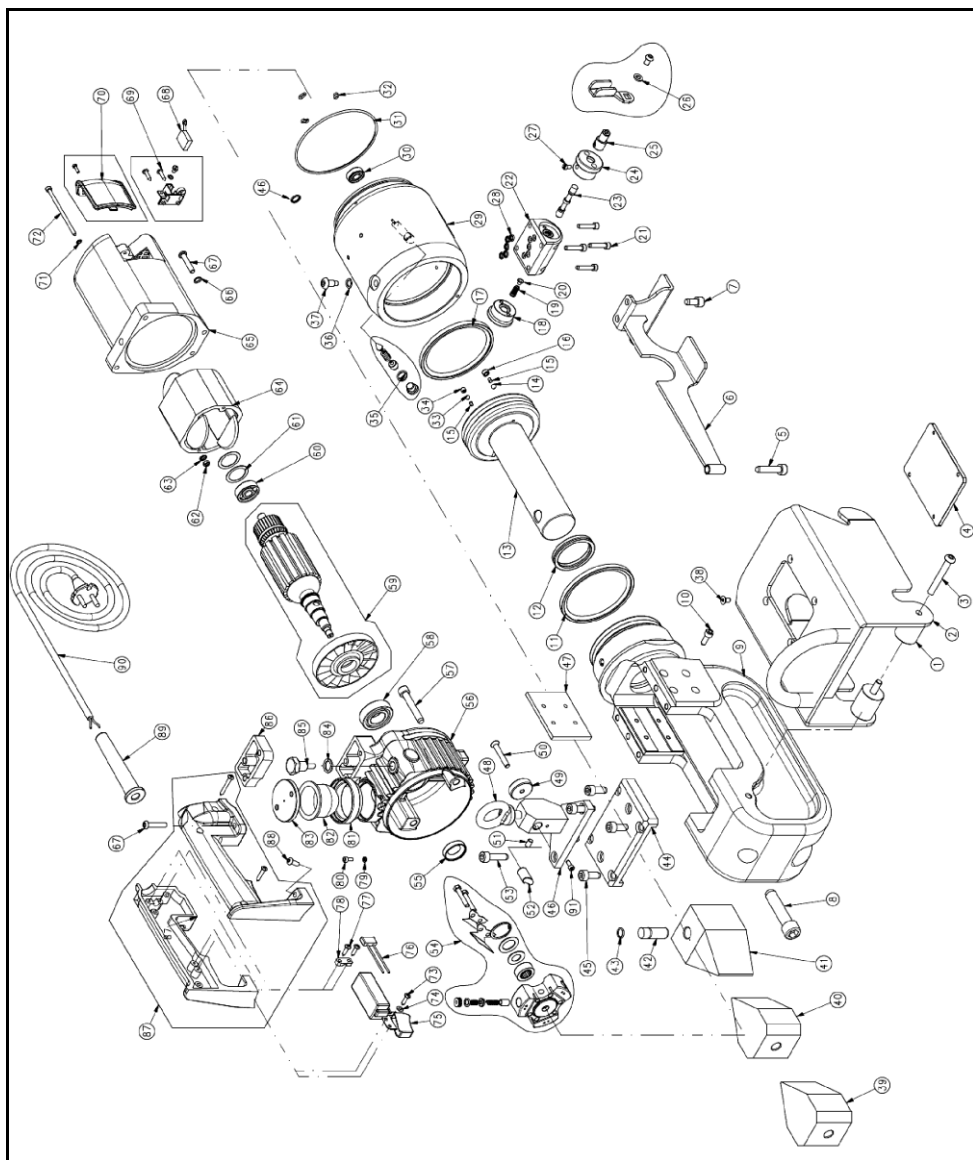
1. Type of equipment
2. Serial number
3. Part number and position in exploded drawing
4. Quantity
5. Revision status indicated on the back cover of the manual.

The Manufacturer can only supply the appropriate spare part if the required data is complete, since subsequent improvements may have entailed structural variations to the equipment and therefore to the spare parts.

### 0.02 MECHANICAL AND ELECTRICAL COMPONENTS

The following page contains an exploded diagram of the machine, complete with the part numbers, descriptions and quantities of each component.

**COMPONENTS OF ELECTRIC CHAIN CUTTER TC32**  
**P/N 1501944**



**COMPONENTS OF ELECTRIC CHAIN CUTTER TC32****P/N 1501944**

<b>Pos.</b>	<b>P/N</b>	<b>Item</b>	<b>Q.ty</b>
1	1.10.5709	BUSH	2
2	1.50.1415	WELDED GUARD ASSEMBLY	1
3	1.60.1019	SCREW	2
4	1.10.4500	POLYCARBONATE INSPECTION WINDOW	1
5	1 60 101	SCREW	1
6	1.50.1418	WELDED FOOT ASSEMBLY	1
7	1 60 2035	SCREW	2
8	1.60.797	SCREW	1
9	1.10.4425	FIXED HEAD	1
10	1 60 103	SCREW	8
11	130.01913	GASKET	1
12	130.00545	GASKET	1
13	1.10.4424	PISTON	1
14	1.60.084	STEEL BALL-BEARING	1
15	1.10.1459	VALVE PISTON	2
16	1.10.2450	RELEASE DOWEL	1
17	130.01913	GASKET	1
18	1.10.1458	BLIND CAP	1
19	1.10.194	LOWER SPRING	1
20	1.10.102	RIVET ROUND HEAD	1
21	1 60 119	SCREW	4
22	1.50.1406	VALVE BLOCK ASSEMBLY	1
23	1.10.1381	VALVE CURSOR	1
24	1.10.1457	PERFORATED CAP	1
25	1.10.1446	CURSOR PIN	1
26	1.50.1520	MANUAL RETURN VALVE (LEVER ASSEMBLY)	1
27	1.10.1552	SCREW FOR VALVE	1
28	1.30.102	O-RING	5
29	1.10.4477	CYLINDER	1
30	1.60.068	BEARING	1
31	1.30.1830	O-RING	1
32	1.10.4503	RUBBER PAD	1
32	1.30.017	O-RING	3
33	1.60.062	STEEL BALL-BEARING	1
34	1.60.828	SCREW	1
35	1.50.1921	CALIBRATION VALVE	1
36	1.70.006	COPPER WASHER	1
37	1.10.4073	HEAD LOCK SCREW	1
38	1.60.817	SCREW	4
39	1.10.4486	LONG FIXED BLADE (A-TYPE)	1
40	1.10.4463	SHORT FIXED BLADE (B-TYPE)	1
41	1.10.4464	MOBILE BLADE	1
42	1.10.5507	LOCK PIN FOR MOBILE BLADE	1
43	1.30.015	O-RING	1
44	1.10.4465	BLADE GUIDE U-BOLT	1
45	1 60 110	SCREW	4
46	1.30.220	O-RING	3
46	1.50.1612	WELDED GUARD LOCK ASSEMBLY	1

<b>Pos.</b>	<b>P/N</b>	<b>Item</b>	<b>Q.ty</b>
47	1.10.4485	SLIDING GIB	2
48	1.10.894	MALE EYEBOLT	1
49	1.10.5707	GUARD RELEASE RING NUT	1
50	1.60.850	SCREW	1
51	1.60.823	SCREW	1
52	1.10.5708	GUARD LOCK PAWL	1
53	1 60 109	SCREW	2
54	1.50.511	PUMP ASSEMBLY	1
55	1.60.014	OIL GUARD	1
56	1.10.4405	OIL TANK	1
57	1 60 174	SCREW	3
58	1.60.013	BEARING	1
59	200.005	ROTOR ASSEMBLY WITH FAN	1
60	1.60.003	BEARING	1
61	1.60.324	ADJUSTING RING	2
62	1 60 207	NUT	2
63	1.60.382	WASHER	2
64	1.40.003	STATOR	1
65	1.30.002	MOTOR COVER	1
66	1.60.303	WASHER	5
67	1.60.938	SCREW	7
68	1.30.005	MOTOR BRUSH	2
69	1.50.1935	BRUSH HOLDER KIT	2
70	1.50.1392	BRUSH COVER ASSEMBLY	2
71	1.10.811	WASHER	2
72	1.10.213	SCREW	2
73	1.60.128	SELF-TAPPING SCREW	2
74	1 60 319	WASHER	2
75	1.40.001	SWITCH	1
76	1.40.002	ANTI-DISTURBANCE FILTER	1
77	1.60.129	SELF-TAPPING SCREW	2
78	1.30.020	PLASTIC CABLE CLAMP	1
79	1.60.3069	BONDED WASHER	1
80	1.60.3087	SCREW	1
81	1.10.4404	OVERSIZE MEMBRANE EXTENSION	1
82	1.30.1829	MEMBRANE	1
83	1.10.4406	MEMBRANE COVER	1
84	1.60.337	GASKET	1
85	1.50.227	MAGNETIC CAP	1
86	1.10.5506	RAISED SUPPORT	1
87	1.50.1934	HALF-SHELL ASSEMBLY PLUS SCREWS	1
88	1.60.940	SCREW	2
89	1.30.021	CABLE HOLDER	1
90	1.40.012	CABLE WITH PLUG	1
91	1.60.3087	SCREW	1

**NOTES**

**EDILGRAPPA** Srl  
**MACHINES AND EQUIPMENT FOR THE BUILDING TRADE, INDUSTRY  
AND RESCUE**

31030 BORSO DEL GRAPPA (TV) - ITALY - Via Callesello, 4  
Tel. 0423 910122 – Fax 0423 542122

E-mail: [cut@edilgrappa.com](mailto:cut@edilgrappa.com)    <http://www.edilgrappa.com>