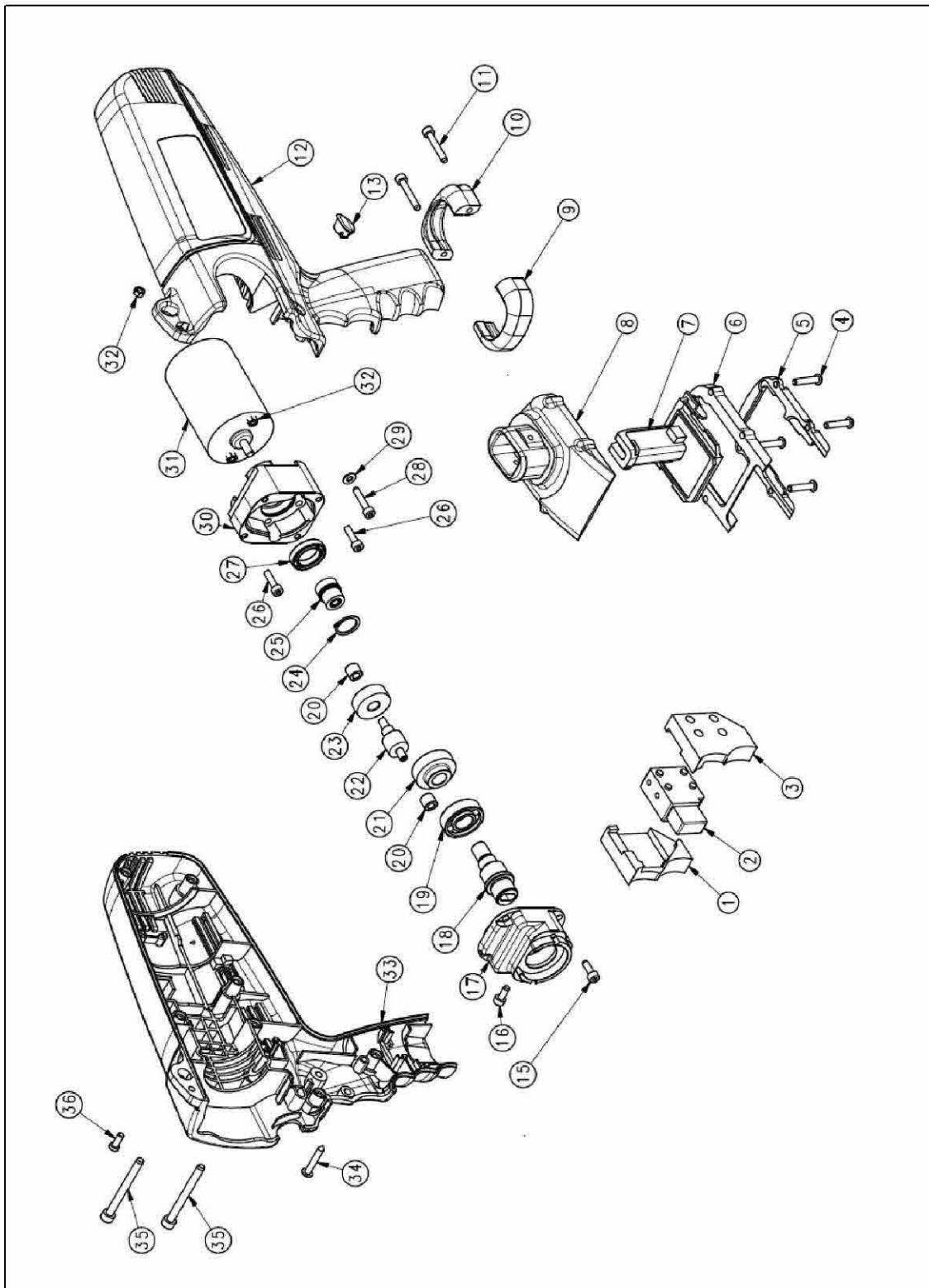


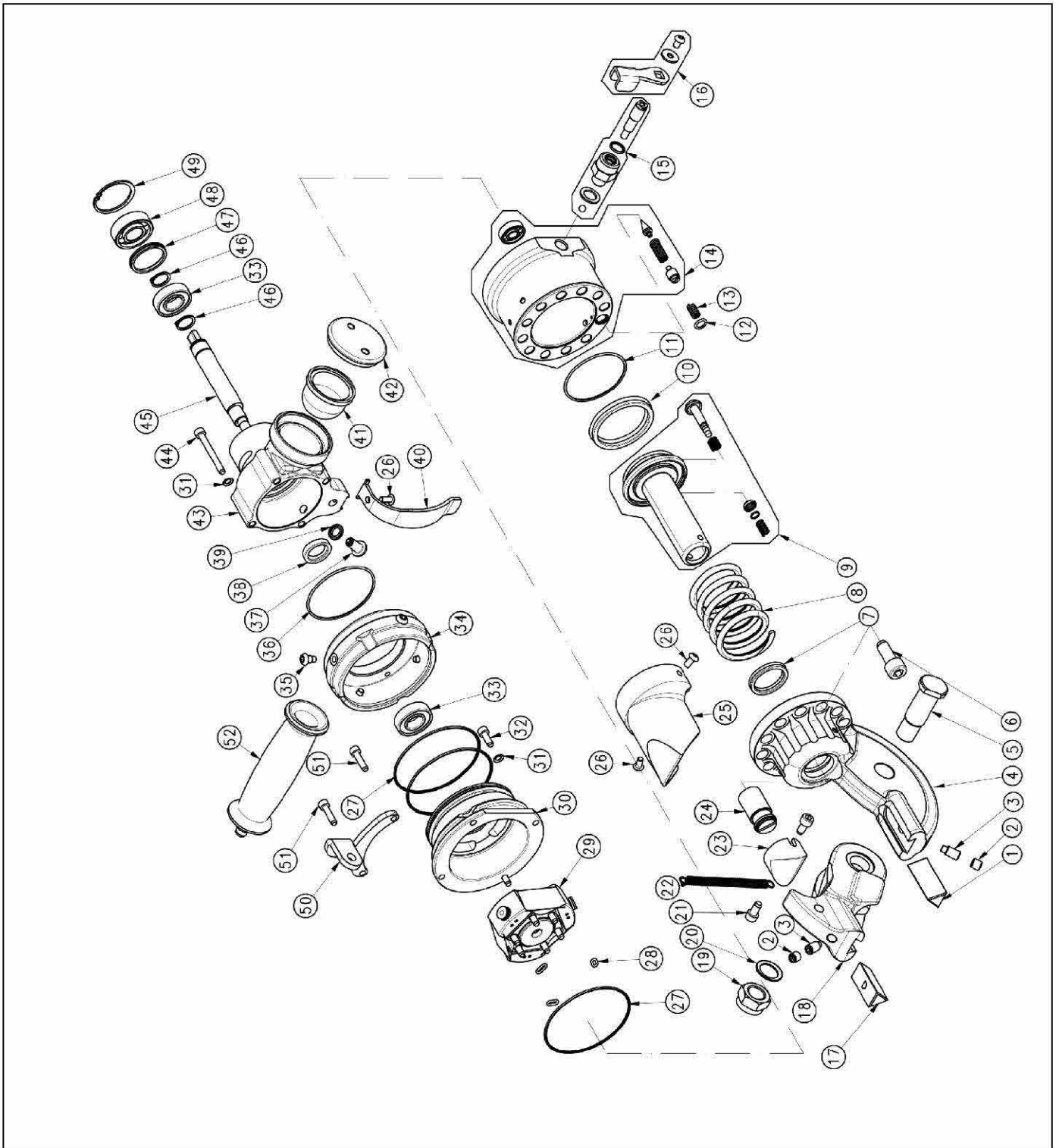
Cordless cutter MU16 - ELECTRIC PART - assy P/N 150.02748



Cordless cutter MU16 - ELECTRIC PART - assy P/N 150.02748

| # | P/N | Rev. | Item | Q.ty |
|----|-----------|------|-----------------------------|------|
| 1 | 1.10.5327 | 2 | SWITCH HOUSING RIGHT | 1 |
| 2 | 1.40.020 | 1 | SWITHC | 1 |
| 3 | 1.10.5326 | 1 | SWITCH HOUSING LEFT | 1 |
| 4 | 1.60.1228 | 0 | SCREW | 4 |
| 5 | 1.10.6864 | 5 | LOWER SLIDE BATTERY HOUSING | 1 |
| 6 | 1.10.6861 | 4 | UPPER SLIDE BATTERY HOUSING | 1 |
| 7 | 1.40.597 | 0 | ELECTRONIC BOARD | 1 |
| 8 | 1.10.6860 | 3 | BATTETY HOOKING | 1 |
| 9 | 1.10.7019 | 3 | FRONT HALF-WASHER | 1 |
| 10 | 1.10.7018 | 3 | REAR HALF-WASHER | 1 |
| 11 | 1 60 793 | 0 | SCREW | 2 |
| 12 | 1.10.7190 | 0 | LEFT HALF-SHELL | 1 |
| 13 | 1.30.342 | 0 | CUP | 1 |
| 15 | 1 60 498 | 0 | SCREW | 4 |
| 16 | 1.60.107 | 1 | SCREW | 1 |
| 17 | 1.10.4467 | 7 | UPPER SHELL GREAR BOX | 1 |
| 18 | 1.10.4421 | 4 | TRANSMISSION SHAFT | 1 |
| 19 | 1.60.082 | 0 | BEARING | 1 |
| 20 | 1.10.980 | 2 | BUSHING | 2 |
| 21 | 1.10.973 | 2 | TOOTHED CROWN | 1 |
| 22 | 1.10.974 | 2 | TOOTHED PINION | 1 |
| 23 | 1.10.977 | 3 | TOOTHED CROWN | 1 |
| 24 | 1.60.396 | 0 | CIRCLIP | 1 |
| 25 | 1.10.5008 | 0 | PINION | 1 |
| 26 | 1.60.141 | 1 | SCREW | 2 |
| 27 | 1.60.3043 | 0 | BEARING | 1 |
| 28 | 1 60 729 | 0 | SCREW | 2 |
| 29 | 1 60 319 | 0 | WASHER | 2 |
| 30 | 1.10.4466 | 7 | LOWER SHELL GREAR BOX | 1 |
| 31 | 1.40.909 | 0 | ELETTRIC MOTOR | 1 |
| 32 | 1.60.207 | 0 | NUT | 3 |
| 33 | 1.10.7191 | 0 | RIGHT HALF-SHELL | 1 |
| 34 | 1.70.025 | 1 | SCREW | 7 |
| 35 | 1 60 2019 | 0 | SCREW | 2 |
| 36 | 1.60.753 | 0 | SCREW | 1 |

EXPLODED VIEW – MU16 BATTERY CUTTER P/N 150.02752
Cordless MU16 – Hydraulic parts – assy P/N 150.02549



EXPLODED VIEW – MU16 BATTERY CUTTER P/N 150.02752
Cordless MU16 – Hydraulic parts – assy P/N 150.02549

| # | P/N | Rev. | Item | Q.ty |
|----|-----------|------|-----------------------------|------|
| 1 | 1.10.233 | 2 | LOWER BLADE | 1 |
| 2 | 1.60.829 | 1 | SCREW | 2 |
| 3 | 1.60.2056 | 0 | SCREW | 2 |
| 4 | 1.10.3557 | 6 | HEAD HOLDER BLADE | 1 |
| 5 | 1.10.3559 | 2 | PIN | 1 |
| 6 | 1 60 112 | 0 | SCREW | 11 |
| 7 | 1.30.070 | 0 | GASKET | 1 |
| 8 | 1.10.231 | 0 | RETURN PISTON SPRING | 1 |
| 9 | 1.50.619 | 0 | PISTON | 1 |
| 10 | 1.30.032 | 0 | GASKET | 1 |
| 11 | 1.30.045 | 2 | O-RING | 1 |
| 12 | 1.30.225 | 2 | O-RING | 1 |
| 13 | 1.10.248 | 1 | SPRING | 1 |
| 14 | 1.50.1942 | 0 | CYLINDER | 1 |
| 15 | 1.50.1932 | 0 | RELEASE VALVE (VALVE GROUP) | 1 |
| 16 | 1.50.1933 | 1 | RELEASE VALVE (LEVER GROUP) | 1 |
| 17 | 1.10.269 | 2 | UPPER BLADE | 1 |
| 18 | 1.10.3558 | 5 | MOBILE HEAD | 1 |
| 19 | 1.60.201 | 0 | NUT | 1 |
| 20 | 1.60.900 | 0 | WASHER | 1 |
| 21 | 1 60 3013 | 0 | SCREW | 2 |
| 22 | 1.10.230 | 0 | SPRING | 1 |
| 23 | 1.10.624 | 2 | PUSHING CAM | 1 |
| 24 | 1.10.579 | 1 | ADJUSTMENT SCREW | 1 |
| 25 | 1.30.546 | 1 | SAFETY COVER | 1 |
| 26 | 1.60.937 | 1 | SCREW | 3 |
| 27 | 1.30.046 | 2 | O-RING | 3 |
| 28 | 1.30.017 | 2 | O-RING | 3 |
| 29 | 1.50.511 | 0 | PUMP (ASSY) | 1 |
| 30 | 1.10.6809 | 4 | ROTATION SUPPORT | 1 |
| 31 | 1.60.410 | 0 | WASHER | 6 |
| 32 | 1.60.3094 | 0 | SCREW | 2 |
| 33 | 1.60.079 | 0 | BEARING | 2 |
| 34 | 1.10.6815 | 2 | EXTERNAL RING FOR ROTATION | 1 |
| 35 | 1.10.6818 | 0 | SCREW | 4 |
| 36 | 1.30.425 | 0 | O-RING | 1 |
| 37 | 1.50.923 | 2 | MAGNETIC CUP | 1 |
| 38 | 1.60.083 | 0 | OIL SEAL | 1 |
| 39 | 1.60.3046 | 0 | BONDED SEAL | 1 |
| 40 | 1.10.4962 | 4 | SWITCH PROTECTION | 1 |
| 41 | 1.30.296 | 0 | MEMBRANE | 1 |
| 42 | 1.10.1871 | 0 | MEMBRANE CUP | 1 |
| 43 | 1.10.4423 | 4 | OIL TANK | 1 |
| 44 | 1 60 811 | 0 | SCREW | 4 |
| 45 | 1.10.6813 | 0 | ECCENTRIC SHAFT | 1 |
| 46 | 1.60.396 | 0 | CIRCLIP | 2 |
| 47 | 1.10.4625 | 1 | THICKNESS | 1 |
| 48 | 1.60.3039 | 0 | BEARING | 1 |
| 49 | 1.60.3045 | 2 | CIRCLIP | 1 |
| 50 | 1.10.6817 | 1 | HANDLE SUPPORT | 1 |
| 51 | 1.60.105 | 0 | SCREW | 2 |
| 52 | 1.50.618 | 2 | GRIP | 1 |