



Duplex Cable Connectors
FMC, AC & MC Cable

TYPE: Single "Snap-In", Duplex
FOR: FMC, AC, MC, or NM Cable
BODY MATERIAL: Zinc Die Cast with Steel Band
BODY FINISH: Vibratory

APPLICATIONS:

- Used to connect two sets of Flexible Metal Conduit, Armored Metal Clad Cable to a steel box, load center, or other metal enclosure
- For use in dry locations only

FEATURES:

- Easy & Quick installation
- Removable & Reusable
- Includes (1) Tri-Combination head set screw applicable with Phillips, Slotted, and Square-Recess screwdriver

COMPLIANCE:



Electrical Resource International
440.878.1199
www.electrical-resource.com



Part No	Trade Size	Pcs/ Unit Ctn	Pcs/ Ship Ctn	Wt (lbs)/ 100pcs
---------	------------	---------------	---------------	------------------

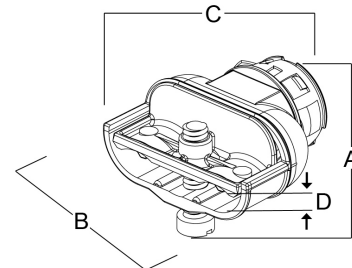
22806	3/8" (1/2" KO)	25	250	13
-------	-------------------	----	-----	----

NOMINAL DIMENSIONS (Inches):

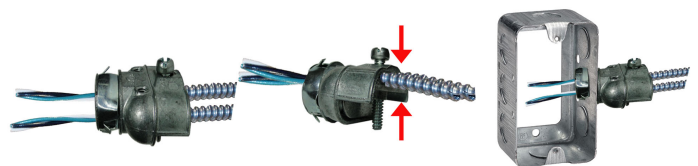
A	B	C	D MIN	D MIN
1.44	1.64	1.28	0.13	0.65

CABLE SPECIFICATIONS:

AL & STEEL AC	AL & STEEL MC/MCI-A/HCF	AL & STEEL RW/FMC
14-2 to 10-3	14-2 to 10-4	3/8"



Snap-In & You're Connected!



Feed wires & FMC through fitting.

Secure FMC in fitting.

Snap into box