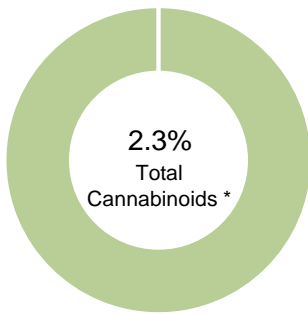


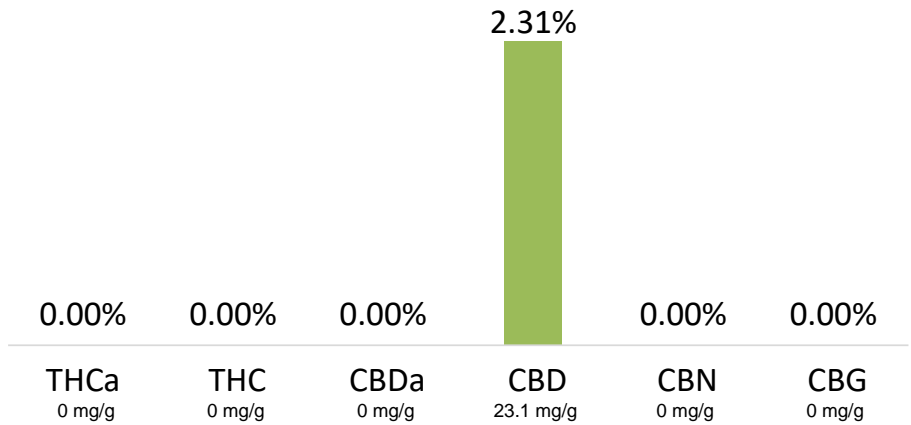
CBD PACKET 1020-18130

Batch ID:	N/A
Reported:	6-Jun-2018
Type:	Concentrate
Test:	Potency

CANNABINOID PROFILE



- Total Potential THC 0% **
- Total Potential CBD 2.31% **



* Total Cannabinoids result reflects the absolute sum of all cannabinoids detected.

** Total Potential THC/CBD is calculated using the following formulas to take into account the loss of a carboxyl group during decarboxylation step.


Total THC = THC + (THCa *(0.877)) and Total CBD = CBD + (CBDa *(0.877))

% = % (w/w) = Percent (Weight of Analyte / Weight of Product)

NOTES:

Free from visual mold, mildew, and foreign matter.

FINAL APPROVAL

 Karen Winternheimer
6-Jun-2018
11:51 AM

 David Green
6-Jun-2018
3:29 PM

PREPARED BY / DATE

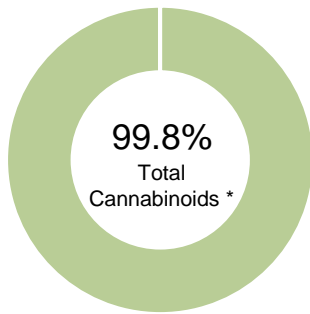
APPROVED BY / DATE

Testing results are based solely upon the sample submitted to Botanacor Services, LLC, in the condition it was received. Botanacor Services, LLC warrants that all analytical work is conducted professionally in accordance with all applicable standard laboratory practices using validated methods. Data was generated using an unbroken chain of comparison to NIST traceable Reference Standards and Certified Reference Materials. This report may not be reproduced, except in full, without the written approval of Botanacor Services, LLC.

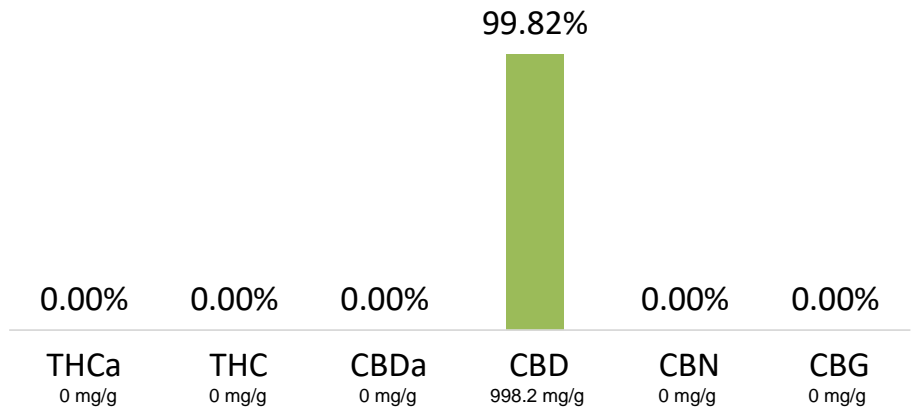
ISOLATE

Batch ID: B1-IBD-FF
Reported: 25-Jan-2018
Type: Concentrate
Test: Potency

CANNABINOID PROFILE



■ Total Potential THC 0% **
■ Total Potential CBD 99.82% **



* Total Cannabinoids result reflects the absolute sum of all cannabinoids detected.

** Total Potential THC/CBD is calculated using the following formulas to take into account the loss of a carboxyl group during decarboxylation step.


Total THC = THC + (THCa *(0.877)) and Total CBD = CBD + (CBDa *(0.877))

% = % (w/w) = Percent (Weight of Analyte / Weight of Product)

NOTES:

Free from visual mold, mildew, and foreign matter.

FINAL APPROVAL


Karen Winternheimer
25-Jan-2018
12:03 PM


Mike Branvold
25-Jan-2018
3:21 PM

PREPARED BY / DATE

APPROVED BY / DATE

Testing results are based solely upon the sample submitted to Botanacor Services, LLC, in the condition it was received. Botanacor Services, LLC warrants that all analytical work is conducted professionally in accordance with all applicable standard laboratory practices using validated methods. Data was generated using an unbroken chain of comparison to NIST traceable Reference Standards and Certified Reference Materials. This report may not be reproduced, except in full, without the written approval of Botanacor Services, LLC.



CERTIFICATE OF ANALYSIS

prepared for: MYADERM
15350 East Hinsdale Drive, Suite B
Centennial, CO 80112

ISOLATE

Batch ID: B1-IBD-FF
Reported: 24-Jan-2018
Type: Concentrate
Test: Residual Solvents


RESIDUAL SOLVENTS

Solvent	Reportable Range (ppm)	Result (ppm)
Propane	100 - 2000	0
Butanes (Isobutane, n-Butane)	100 - 2000	0
Pentane	100 - 2000	0
Ethanol	100 - 2000	0
Acetone	100 - 2000	0
Isopropyl Alcohol	100 - 2000	0
Hexane	6 - 120	0
Benzene	0.2 - 4	0.0
Heptanes	100 - 2000	0
Toluene	18 - 360	0
Xylenes (m,p,o-Xylenes)	43 - 860	0

NOTES:

Free from visual mold, mildew, and foreign matter.

FINAL APPROVAL


Karen Winternheimer
24-Jan-2018
2:14 PM


Mike Branvold
24-Jan-2018
2:53 PM

PREPARED BY / DATE

APPROVED BY / DATE

Testing results are based solely upon the sample submitted to Botanacor Services, LLC, in the condition it was received. Botanacor Services, LLC warrants that all analytical work is conducted professionally in accordance with all applicable standard laboratory practices using validated methods. Data was generated using an unbroken chain of comparison to NIST traceable Reference Standards and Certified Reference Materials. This report may not be reproduced, except in full, without the written approval of Botanacor Services, LLC.