

Brewista®

Flex-a-Bowl Scale™

BSCFB2000



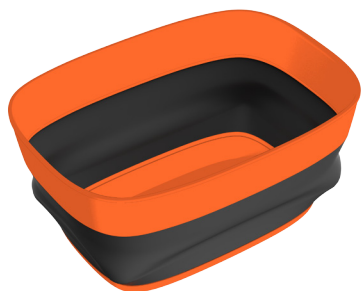
Scan for
Instructional video



QUICK START GUIDE

Start Here

• What's in the box?



Collapsible Bowl /
Protective Cover



Scale



(2) AAA Batteries



Two (2) Replacement
Silicone Gaskets

• Install the Batteries



- Remove the battery cover.
- Insert the batteries with the negative ends against the springs.
- Replace battery cover.
- If silicone gasket is missing or damaged, replace it with one of the included spares.

• Features

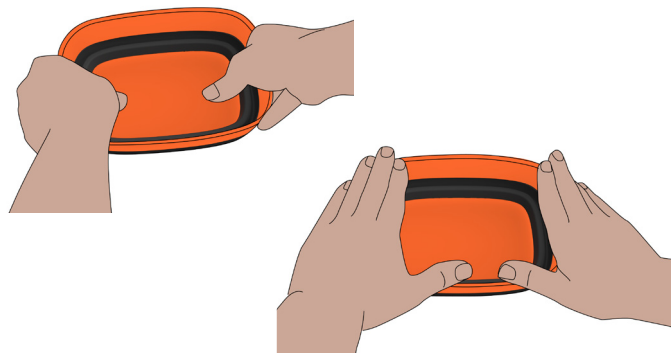


- Water resistant nano-coating
- Auto-off feature
- Flexible bowl / Protective cover
- Backlit digital display
- 2000 gram capacity
- Accuracy: 0.1 gram
- Multiple weighing units
- Requires two AAA batteries (included)

• Layout



• Flexible Bowl / Protective Cover



- To change the cover into a bowl:
 - Grip the outer orange rim.
 - Push the flat orange bottom from the inside outward.
- To change the bowl into a cover:
 - Place bowl on a flat surface.
 - Push downward on the outer orange rim.

• Operation



- Press ON/OFF button to turn on the scale.
- Press MODE button to select the weighing unit.
- Place the item to be weighed on the platform.

• Tare Function



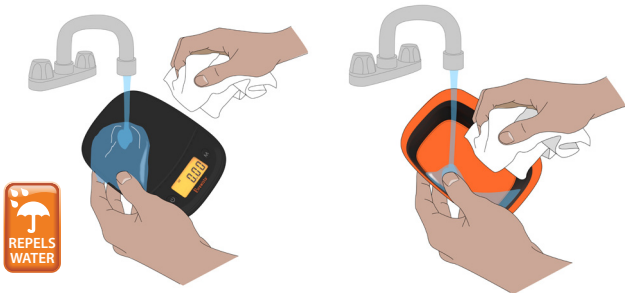
- Press ON/OFF button to turn on the scale.
- Place the item to be tared (i.e. the bowl) on the platform.
- Press ON/OFF button and wait until LCD displays “0.00”.
- Add the item to be weighed (i.e. coffee beans).

• Auto-off Function



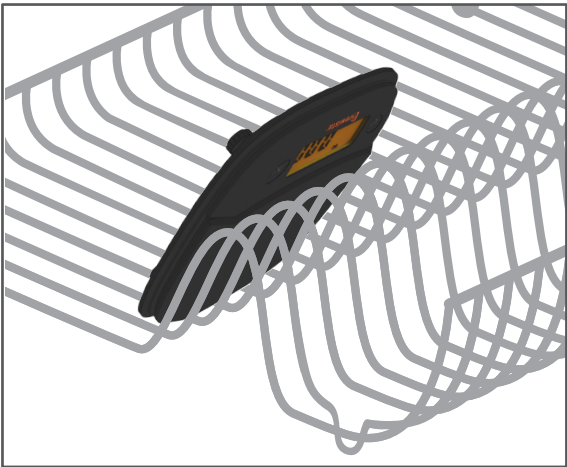
- Turn off the scale.
- Press and hold the ON/OFF and MODE buttons at the same time until “180” is displayed.
- Release the buttons.
- Press MODE button to select 60, 120, or 180 seconds.
 - Select “0” to disable the Auto-off function.
- Turn off the scale to apply the setting.

• Washing Instructions



- Hand wash only with mild soapy water.
- Do not submerge the scale in water. Doing so may require excessive drying time.
- Wash only the platform. Rinse other parts with plain water if needed.
- Shake out excess water by firmly grasping the scale in one hand, and tapping it against your other hand.
- Do not press hard on the platform.
- Dry the exterior of the scale with a soft cloth or leave to dry on a dish rack.

• Drying Instructions



Note: To achieve the fastest drying time, lean scale up to dry in a drying rack with the buttons and LCD above the scale platform.



Brewista® Flex-a-Bowl Scale™

BSCFB2000
1133 W. 27th Street, Cheyenne, WY 82001, USA | www.mybrewista.com
Toll Free in North America: 888-538-8683 | Local: 307-222-6086