



## Cold Pro™ Commercial Cold Brew Coffee System



QUICK START GUIDE

Scan for video

# Start Here

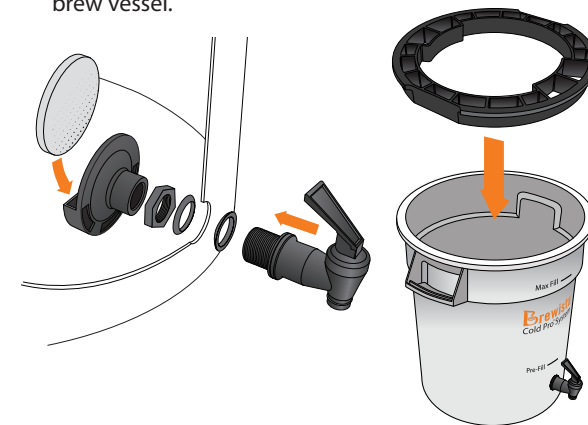
## Components



## Assemble Cold Pro™ System

Note: Detailed assembly instructions can be found in the owner's manual.

- Install the spigot with one rubber washer on each side of the bucket wall.
- Secure the spigot with the hex nut.
- Attach the outlet filter holder.
- Insert the polyfiber outlet filter.
- Install the appropriate adaptor ring for your brew vessel.



### 1 Before You Begin

Determine the combination of filters desired.



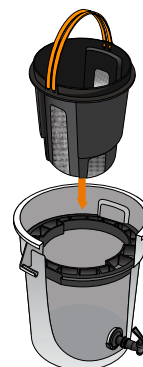
### 2 Insert the appropriate adaptor ring

into the brewing vessel.



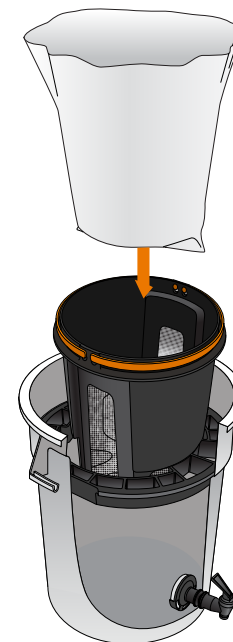
### 3 Position and turn

the permanent filter so it rests below the rim of the bucket.



### 4 Insert paper filter

- The paper filter is optional, but highly recommended for easier clean up and better refinement.
- Do not fold the orange handles over the paper filter.



## 5 Add measured water to the brew vessel

- Rubbermaid Brute® bucket: up to the Pre-fill line (approx. 3 gallons or 11.5 liters)
- Carlisle™ 22 quart bucket: approx. 2 gallons or 7.5 liters
- Curtis™ stainless steel dispenser: approx. 3 gallons or 11.5 liters



## 6 Add coarsely ground coffee

to the permanent filter, with or without the paper filter and allow to pre-infuse (bloom) for 5 minutes.



## 7 Add more water.



- Do not fill above the “Max fill” line to prevent grounds from overflowing during the bloom.
- The recipe and ratio is decided upon by the user.
- Brewista encourages experimentation to develop the best cold brew possible. Visit [mybrewista.com](http://mybrewista.com) for recommended recipes.

## 8 Stir grounds and water.

Repeat stirring after one hour to ensure complete saturation of the grounds.

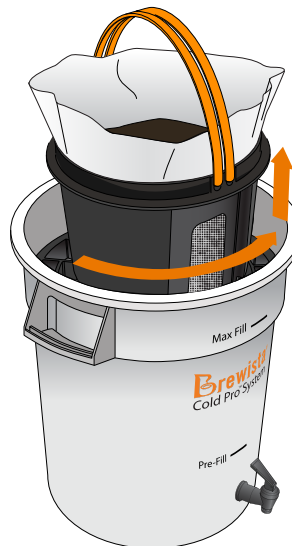


## 9 Steep Overnight.

Cover with lid. (Steeping time is determined by the user.)

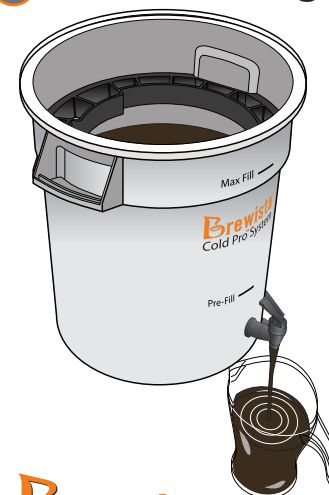


## 10 After Steeping:



- Lift the permanent filter with the grounds.
- Twist the filter to align the supports onto the adaptor ring.
- Allow the concentrate to drain into the vessel below the permanent filter.

## 11 After Draining:



- Dispose of the grounds and paper filter (if used).
- Dispense the ready-to-drink cold brew into a serving vessel or airtight storage container.
- Keep cold brew refrigerated.

# Brewista®

Cold Pro™ Commercial Cold Brew Coffee System