



Cold Pro 2™ Commercial Cold Brew System

BCP2PRMSYS



QUICK START GUIDE

Start Here

Components



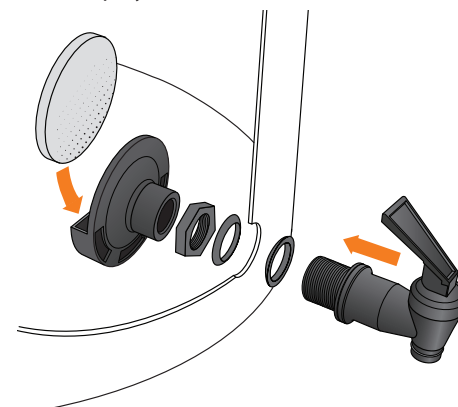
Assemble Cold Pro 2™ System

Note: Detailed assembly instructions can be found in the owner's manual.

- Install the spigot with one rubber washer on each side of the bucket wall.
- Secure the spigot with the hex nut.

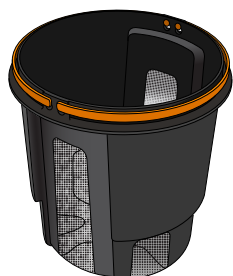
Optional addition:

- Attach the outlet filter holder.
- Insert the polyfiber outlet filter.

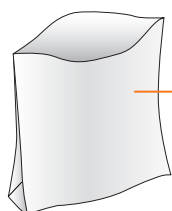


1 Before You Begin

Determine the combination of filters desired.



Stainless Steel Permanent Filter



Cold Pro™ Filter
(Paper or PLA)

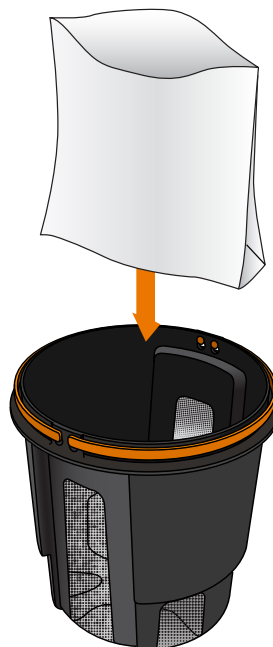
AND/OR



Finishing Filter
(optional)

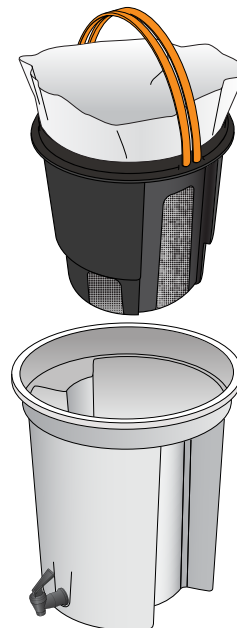
2 Insert paper filter

- The paper filter is optional, but highly recommended for easier clean up and better refinement.
- Do not fold the orange handles over the paper filter.



3 Position and turn

the permanent filter so it rests below the rim of the bucket.



4 Add coarsely ground coffee

to the permanent filter and the paper filter (paper filter is optional).



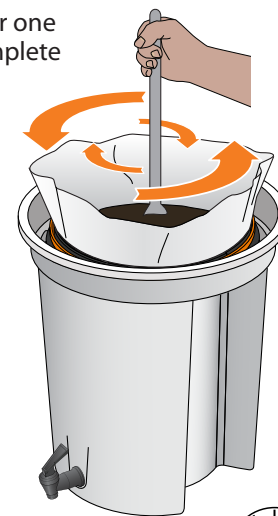
5 Add water.

- Do not fill above the inner supports of the bucket to prevent grounds from overflowing during the bloom.
- Allow to bloom for 5-10 minutes, then stir to saturate grounds.
- The recipe and ratio is decided upon by the user.
- Brewista encourages experimentation to develop the best cold brew possible. Visit mybrewista.com for recommended recipes.



6 Stir grounds and water.

Repeat stirring after one hour to ensure complete saturation of the grounds.



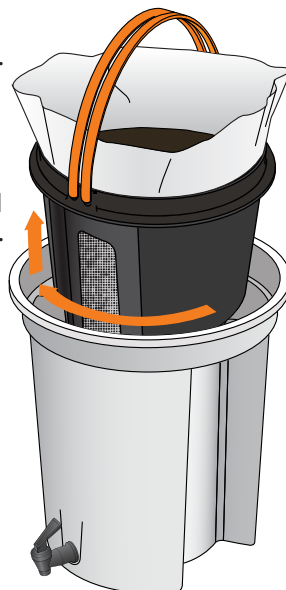
7 Steep Overnight.

Cover with lid. (Steeping time is determined by the user.)



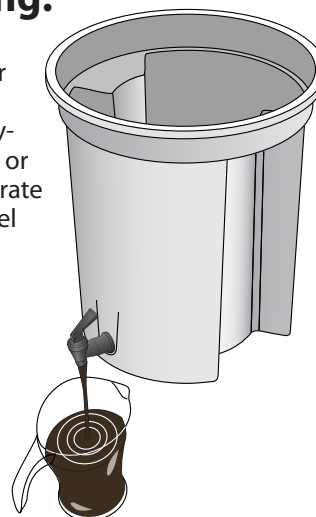
8 After Steeping:

- Lift the permanent filter with the grounds.
- Twist the permanent filter to align with the supports on bucket.
- Allow the concentrate to drain into the vessel below the filter basket.



9 After Draining:

- Dispose of the grounds and paper filter (if used).
- Dispense the ready-to-drink cold brew or cold brew concentrate into a serving vessel or airtight storage container.
- Keep cold brew refrigerated.



Brewista®

Cold Pro 2™ Commercial Cold Brew System

BCP2PRMSYS

1133 W. 27th Street, Cheyenne, WY 82001, USA | www.mybrewista.com

Toll Free in North America: 888-538-8683 | Local: 307-222-6086

Brewer: U.S. Patent Numbers D774,352, D779,875 | CH Patent Number 141968 | EU Patents 002768572-0001 to -0005

Paper filter: EU Registered Design numbers: 004086379-0001, 004086379-0002, 004086379-0003 | Chinese Registered Design Patent: 201730141259.2

Additional U.S. and International patents pending