

FLORAL & WINE

DEPARTMENT SHOWCASE



MARCO

The Marco Company story began with two brothers, Darrell Sr. and David Cooper, and their vision of establishing a company that would provide innovative merchandising solutions for the retail industry. In 1984, The Cooper brothers, along with their wives, various family members and a 5,000 square foot building, made their vision a reality in Fort Worth, Texas.

Through determination and perseverance, the Coopers founded The Marco Company and saw their dream begin to take shape. Within four years, the company had growth to 33 employees and occupied over 10,000 square feet of manufacturing space. The growth experienced by The Marco Company has continued, not only in manufacturing space and employee count, but also in expanded capabilities with a widened scope of industry segments served.

After 35 years of growth and success, The Marco Company now includes over 500 employees and over 1 million square feet of manufacturing and warehouse space. Marco remains family-owned and operated, and continues to fulfill the vision of the Cooper brothers by proudly serving the retail industry with innovative merchandising solutions.

Floral & Wine

According to PMA and FMI's research, the supermarket floral operation generates 1.5% of total sales with a gross margin of 44%, while wine's climb from 30-50%. With these high profits, it is crucial to keep these departments fresh and updated. The Marco Company offers a variety of floral and wine displays value engineered to achieve the highest return on investment.

sources: pma.com & azcentral.com

THE COOPER BROTHERS



DARRELL COOPER SR. (LEFT) - DAVID COOPER (RIGHT)

MISSION STATEMENT

Through teamwork, leadership and service, we create value for our customers
by manufacturing the finest and most innovative display products.

FLORAL DISPLAY

Floral Display 06-08

Modular Display 09

DISPLAY CART

Display Cart 10-13

WINE DISPLAY

Wine Display 14-17

Standard Materials and Finishes 18

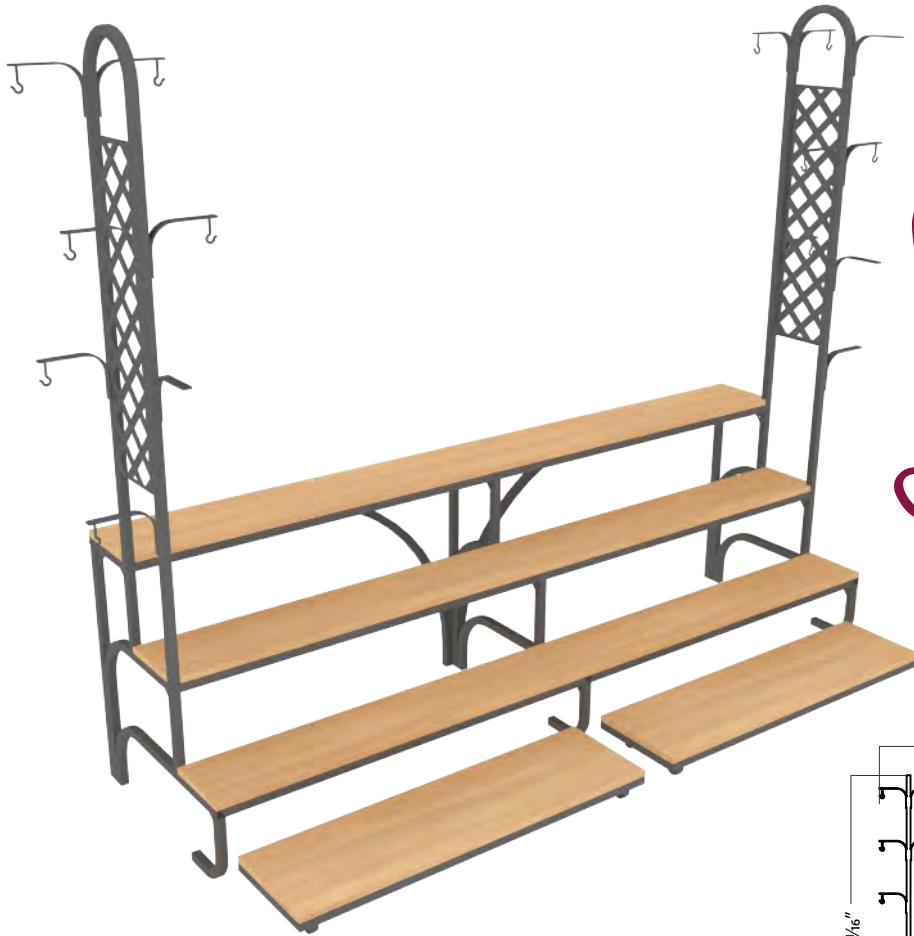
Warranty 19

.....
.....
.....
.....
.....
.....
.....
.....
.....
.....

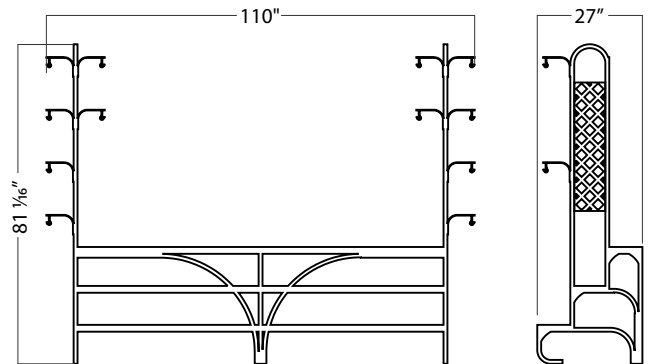


FLORAL DISPLAY





Flower Power



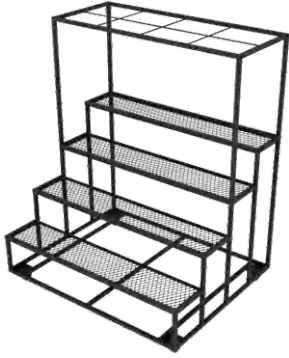
DIMENSIONS & SPECS

36344 FLBENCH

- 8' Wide, three tier flower bench
- Clear coated hardwood tops
- Fully welded, powder coated steel frame
- (2X) Low carts with casters: 44" X 12"
- (16X) Metal basket hanger

DWG#	Dimensions	Use
36344	110" X 27" X 81 1/16"	Hanging plants Potted plants Plant trays
Materials	Hardware	Orientation
3/4" Red Oak lumber 1" Tube steel 20 GA sheet steel	Locking casters: ZL039	Inline Back to back

FLORAL & WINE: FLORAL DISPLAY



MET-FS 003

DWG# 4303 DIM: 60" X 48" X 74"

- Tiered shelving display w/ hanging frame
- 1" Square tubing & four metal shelves
- 3" Swivel casters



MET-FS 004

DWG# 4516 DIM: 48" X 48" X 38"

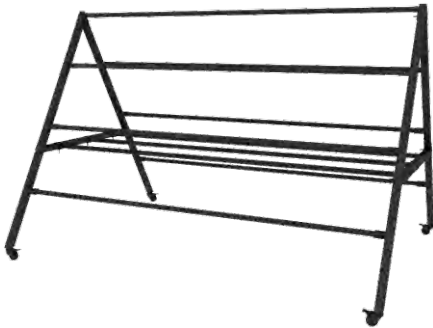
- Tiered shelving display
- 1" Square tubing & four metal shelves
- 3" Swivel casters



MET-FS

DWG# 2443 DIM: 48" X 35 1/4" X 30"

- Tiered shelving display
- Three metal shelves w/ 2" lip edge
- 2" Square tubing & 3" swivel casters



MET-HB A FRM

DWG# 1562 DIM: 120" X 86 9/16" X 78 19/32"

- 10 G powder coated steel
- 60° Legs & (4X) 3" swivel casters
- 96" Long available: DWG# 1230



MET-FS O

DWG# 1290 DIM: 48" X 35" X 30"

- Tiered shelving display
- 1" Square tubing & three wood shelves
- 3" Swivel casters



NT-44

DWG# 18711 DIM: See description

- LG: 49 7/16" X 19 7/16" X 37"
- MD: 41 7/16" X 19 7/16" X 29 3/8"
- SM: 33 7/16" X 19 7/16" X 21 7/8"



FL-38805 SET

DWG# 38805 DIM: See description

- Slatted wood tops w/ metal bases
- LG: 36" X 18" X 31" & SM: 36" X 12" X 18"
- 1" Square tubing w/ stem glides



FL-032

DWG# 28462 DIM: 48" X 16" X 30"

- Table w/ distressed finish
- Rough side out, resawn red oak wood
- SM: 34" X 12" X 15" available: DWG# 28452



58161

DWG# 16630 DIM: See description

- Laminated table tops w/ metal bases
- LG: 36" X 36" X 36" & SM: 24" X 24" X 24"
- 3" Swivel casters w/ locks



NT-35374

DWG# 35374 DIM: See description

- Wood table set w/ turned legs
 - LG: 60" X 30" X 3 3/4"
 - SM: (2X) 47 3/4" X 15" X 24 1/4"



NT-100 SET

DWG# 28250 DIM: See description

- LG: 60" X 30" X 34 11/16"
- MD: 48" X 30" X 29 11/16"
- SM: 36" X 30" X 24 11/16"



FL-038 EC

DWG# 32497 DIM: 58" X 27" X 65"

- Wood & metal upright display
 - (12X) Galvanized cones: 7 1/2" X 7 1/2" X 15"
 - (6X) Adjustable shelves w/ 1" deep liners



FPU-010

DWG# 7062 DIM: 25" X 25" X 63"

- Powder coated metal upright display
 - (12X) ABS plastic cones: 9" X 9" X 10"
 - (5X) 2" Twin casters w/ locks



MFS-003

DWG# 7854 DIM: 30 1/4" X 30 1/4" X 52 7/8"

- Powder coated metal upright display
 - (6X) Plastic cones: 9" X 9" X 10"
 - Sign holder



MFS-005

DWG# 14537 DIM: See description

- Metal stand display set, LG: 12 5/16" X 37"
- MD: 12 5/16" X 31" & SM: 12 5/16" X 25"
- (3X) Plastic cones: 9" X 9" X 10"



MFC

DWG# 16844 DIM: 6 7/8" X 6 7/8" X 12 1/8"

DWG# 16845 DIM: 7 1/2" X 7 1/2" X 15 1/4"

DWG# 16846 DIM: 8 3/8" X 8 3/8" X 18 1/2"

DWG# 33413 DIM: 11 1/2" X 11 1/2" X 10"



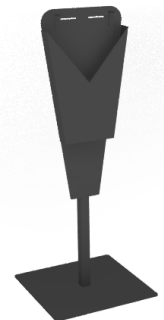
FC

DWG# 37902 DIM: 6 1/4" X 6 1/4" X 7"

DWG# 4825 DIM: 7" X 7" X 9 1/2"

DWG# 2816 DIM: 8" X 8" X 13 3/4"

DWG# 11736 DIM: 10 5/8" X 10 5/8" X 13 1/16"



BH-FL 001

DWG# 2122 DIM: 18" X 18" X 45 15/16"

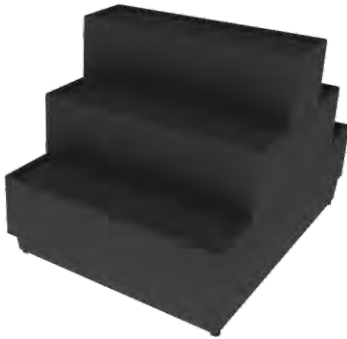
- Metal bag holder w/ 16 G steel
- Adjustable hook: 3 1/2" to 8 3/4"



FDM-IC

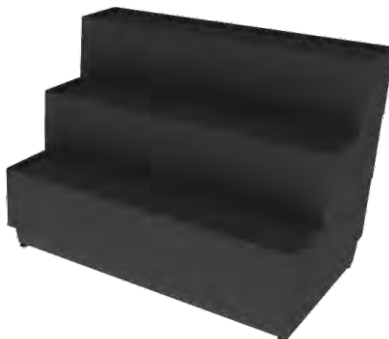
DWG# 10330
DIM: 50 5/32" X 50 5/32" X 34 27/32"

- Plastic modular display
 - Double sided
 - Three steps w/ 3/4" lip
 - Leg levers



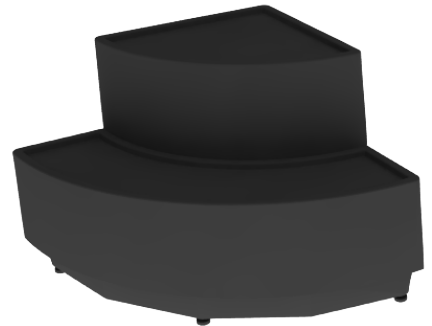
FDM-IX
DWG# 34901 DIM: 36" X 50 5/32" X 34 27/32"

- Double sided plastic modular display
 - Three steps w/ 3/4" lip
 - Leg levers



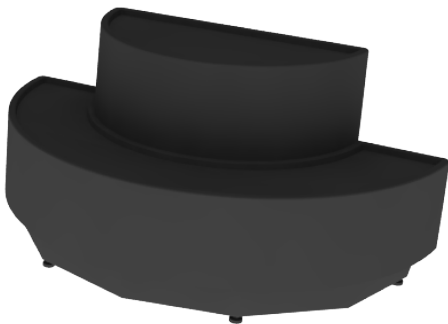
FDM-X 48
DWG# 6270 DIM: 48" X 30 1/32" X 34 27/32"

- Plastic modular display
 - Three steps w/ 3/4" lip w/ leg levers
 - 36" Long available: DWG# 14815



FDM-E 30
DWG# 14812 DIM: 30 3/8" X 30 3/8" X 24 27/32"

- Corner plastic modular display
 - Two steps w/ 3/4" lip
 - Leg levers



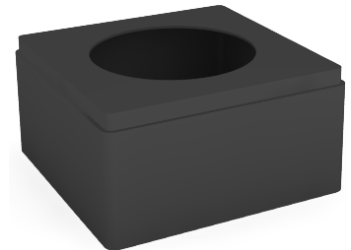
FDM-IE
DWG# 20405 DIM: 50 5/32" X 25" X 24 27/32"

- End cap plastic modular display
 - Two steps w/ 3/4" lip
 - Leg levers



VEG-CUBE
DWG# 20931 DIM: 12 1/16" X 12 1/16" X 11"

- Plastic base
 - 6" Tall available: DWG# 25311



VEG-CUBE6
DWG# 14272 DIM: 11 3/4" X 11 3/4" X 6"

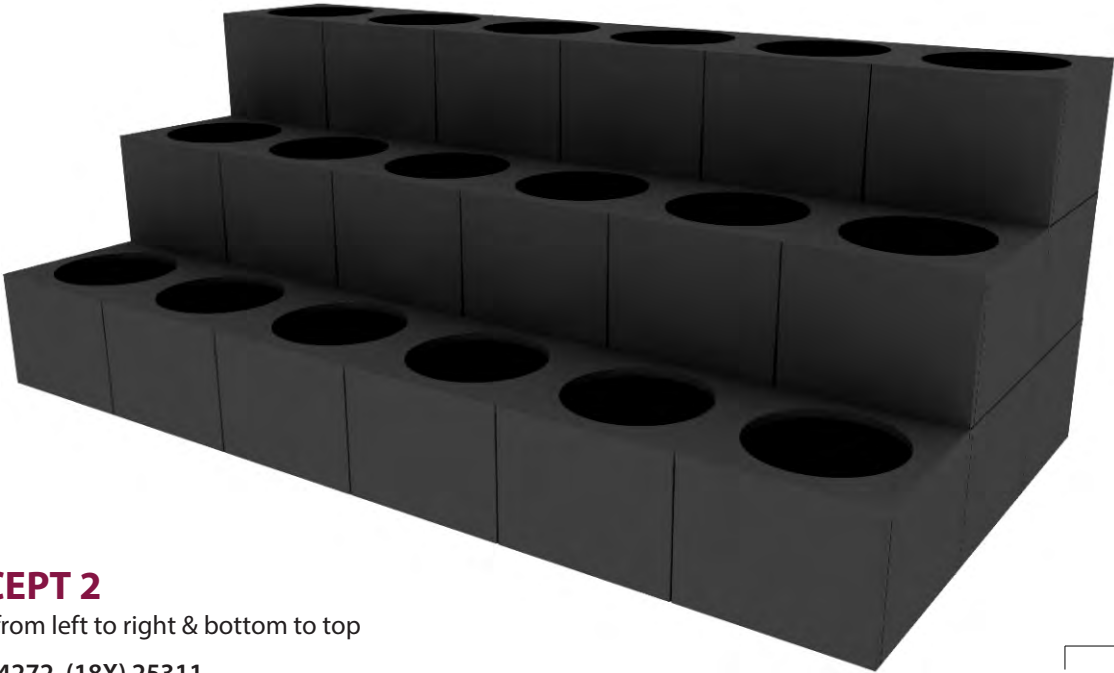
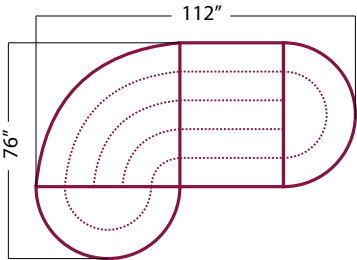
- Stackable plastic base w/ 7 3/4" circle cutout
 - 6" Tall base available DWG# 20931
 - 11" Tall base available DWG# 25311



CONCEPT 1

DWG#s from left to right & bottom to top

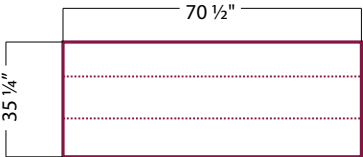
- 20405, 10330, 34901, 20405



CONCEPT 2

DWG#s from left to right & bottom to top

- (18X) 14272, (18X) 25311



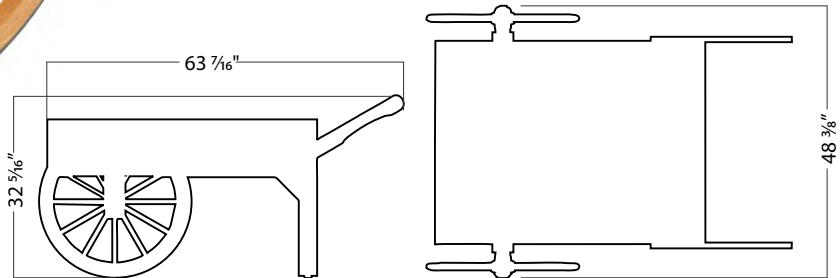


DISPLAY CART





Roll Out



DIMENSIONS & SPECS

CART-53

- All wood construction with metal axle
- 48" X 36" X 10" Holding area
- (2X) 27" wagon wheels with rubber tread
- Free standing chalkboard included

DWG#	Dimensions	Use
36938	63 7/16" X 42 1/2" X 32 5/16"	Potted plants Bulk products Plant trays
Materials	Hardware	Orientation
Red Oak plywood Chalkboard Black rubber	Floor glide: ZM002	Island



CART-04

DWG# 2444

DIM: 74 5/32" X 50 5/32" X 34 27/32"

- Cart w/ front pull handle
- (7X) Fixed shelves
- (2X) Wagon wheels



CART-05

DWG# 2623 DIM: 69" X 36 3/4" X 60 7/8"

- Pull cart w/ dowel rod handle
- (2X) Risers: 40" X 16" X 12"
- (2X) Wagon wheels & (2X) 2" swivel casters



CART-06

DWG# 1667 DIM: 51 1/2" X 78 3/8" X 48 1/4"

- Removable shelf & extension: 33 3/4"
- Adjustable angle shelf & (2X) fixed shelves
- (2X) Wagon wheels & (2X) 3" swivel casters



CART-10

DWG# 2354 DIM: 103 1/4" X 51 1/2" X 36"

- Pull cart w/ decorative sides
- Plastic liner & buckboard shelf
- (4X) Wagon wheels & (2X) 3" swivel casters



CART-11

DWG# 1718 DIM: 80 1/16" X 41 13/16" X 58 15/16"

- Fixed shelf: 60 1/2" X 14" & wine rack
- (2X) Divided bins: 6 1/2" X 27" X 17"
- (2X) Wagon wheels & (2X) 3" swivel casters



CART-14

DWG# 1811 DIM: 50 1/2" X 33 1/8" X 37 15/16"

- Pull cart w/ pivoting handle
- Utility storage w/ paper cutting edge
- (2X) Wagon wheels & (2X) 3" swivel casters



CART-17

DWG# 2885 DIM: 40 3/4" X 61 1/4" X 46"

- Adjustable shelf at 0° or 15°, extension: 20"
- (3X) Adjustable angle shelves
- (2X) Wagon wheels & (2X) 3" swivel casters



CART-19

DWG# 2887 DIM: 75" X 66" X 42 1/4"

- (3X) Extensions: 12"
- (6X) Collapsible shelves
- Swivel casters



CART-20

DWG# 6776 DIM: 78 3/4" X 53 3/4" X 42 1/4"

- Cart display w/ (6X) fixed shelves at 0°
- Rear collapsible shelf
- (2X) Wagon wheels & (2X) 3" swivel casters



CART-22

DWG# 1434 DIM: 83 1/4" X 57 1/4" X 77 1/8"

- Cart display w/ removable chalkboard sign
- (4X) Adjustable shelves
- (2X) Wagon wheels & (2X) 3" swivel casters



CART-26

DWG# 7155 DIM: 98 7/8" X 75 1/2" X 59 3/8"

- Half moon shelf & (2X) adjustable shelves
- Sloped table top at 30° w/ foam pad
- (2X) Wagon wheels & (2X) 3" swivel casters



CART-30

DWG# 10262 DIM: 57 1/4" X 37 1/2" X 72 1/2"

- Cart w/ corrugated metal roof
- (4X) Crates w/ removable dividers
- (2X) 26" wagon wheels



CART-39

DWG# 29069 DIM: 20" X 20" X 29"

- Cart w/ metal side rails
- (2X) Shelves w/ 1 1/2" lip
- (4X) 7 1/2" Swivel casters w/ locks



CART-40438

DWG# 40438 DIM: 50" X 30" X 52 3/16"

- Removable clear bin: 46 3/4" X 12" X 9 1/4"
- Sloped table top at 30° w/ (3X) lugs
- (2X) Wagon wheels & (2X) 2" swivel casters



KR-BEER 1

DWG# 29050 DIM: 36" X 36" X 34"

- Cart w/ slat wood table top
- (2X) Perforated metal shelves
- (4X) 26" wagon wheels



CART-09

DWG# 1951 DIM: 61 7/16" X 36 7/8" X 78 5/8"

- Cart w/ (2X) fixed shelves & chalkboard sign
- (2X) Plastic trays w/ drain system
- (2X) 18" Wagon wheels & dowel rod handle

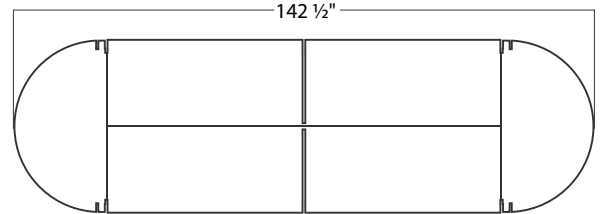
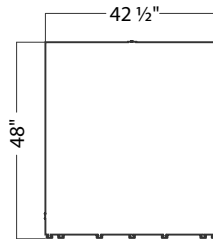


WINE DISPLAY





Fabulous



DIMENSIONS & SPECS

WN-40226

- Adjustable shelves on standards
- Metal price tag moldings
- Planked wood design
- Linseed oil finish

DWG#	Dimensions	Use
40226	142 1/2" X 42 1/2" X 48"	Wine display Liquor display Retail
Materials	Hardware	Orientation
Resawn red oak Red oak plywood Powder coat steel	Metal PTM Metal leg levelers	Island

FLORAL & WINE: WINE DISPLAY



WN-027

DWG# 39523 DIM: 48" X 24" X 78"

- Front door storage w/ (2X) adjustable shelves
- Steel wine rack for horizontal bottle display
- Slant shelf at 30° & lighting system



WN-001

DWG# 0708 DIM: 48 1/2" X 22 X 86"

- Shelf display w/ leg levelers
- (2X) Adjustable shelves at 0°
- (3X) Crates w/ removable dividers at 30°



WINE RACK O 001

DWG# 0824 DIM: 48" X 16" X 60"

- Wine cabinet display
- (6X) Shelves w/ scallop racks at 45°
- (2X) Sliding glass doors



WN-002

DWG# 0707 DIM: 48 3/4" X 24" X 85 7/16"

- Shelf display
- (5X) Adjustable shelves at 0°
- Floor glides



WN-010

DWG# 7216 DIM: 48 1/4" X 24 1/8" X 55 1/2"

- Shelf display
- (2X) Adjustable shelves at 0°
- Floor glides



WN-028

DWG# 39524 DIM: *NEW

- Shelf display
- (4X) Fixed shelves at 0°
- Floor glides



WN-185

DWG# 34781 DIM: 71 3/4" X 55" X 45 7/8"

- Multi-bin display
- (3X) Pull-out bins w/ five rigid casters
- (14X) Crate style bins at 40°



WN-107

DWG# 17866 DIM: 85" X 50" X 53 1/16"

- (18X) Flat shelves at 0°
- (18X) Fixed crates w/ scallop racks at 45°
- (6X) 5" Swivel casters



WN-184

DWG# 34776 DIM: 45 15/16" X 45 15/16" X 69 1/8"

- Shop around display
- (9X) Fixed crates & (9X) fixed shelves
- (4X) 5" Swivel casters & sign holder



WRK-STATION2

DWG# 21345 DIM: 64 1/2" X 30" X 36 3/8"

- (4X) storage drawers
- (2X) Collapsible shelves: 30" X 15"
- (4X) Swivel casters w/ locks & trash drawer



WN-026

DWG# 37336 DIM: 47 7/8" X 19 3/4" X 60 1/8"

- Metal wine rack display w/ wood crate
- Powder coated metal racks at 5°
- Fixed crate w/ scallop rack at 30°



BHC-22

DWG# 10756 DIM: 17" X 17" X 53"

- Powder coated metal upright w/ (2X) shelves
- Fits (36X) wine bottles
- Sign holders & bag holder



WSC-001 #2

DWG# 4603 DIM: 48" X 15 1/2" X 6"

- Shelf crate w/ scallop rack at 45°
- Attaches to existing gondola standards
- Available in 36" length: DWG# 4602



WSC-001 #5

DWG# 4523 DIM: 48" X 15 1/2" X 13"

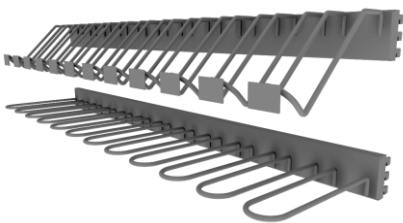
- Shelf crate w/ scallop rack at 30°
- Sets on top of existing shelving
- Wood construction



WN-187

DWG# 34782 DIM: 47 7/8" X 16 3/4" X 13 1/2"

- Shelf crate w/ removable dividers at 30°
- Attaches to existing gondola standards
- Wood construction



WN-181

DWG# 35395 DIM: 47 7/8" X 10" X 3"

- (11X) Flat brackets at 0°
- (1X) Angled bracket 45°
- Attaches to existing gondola standards



CRATE-66

DWG# 34703 DIM: 20" X 13 3/4" X 9 3/8"

- Pine wood crate w/ false bottom
- Handles on two sides



36492

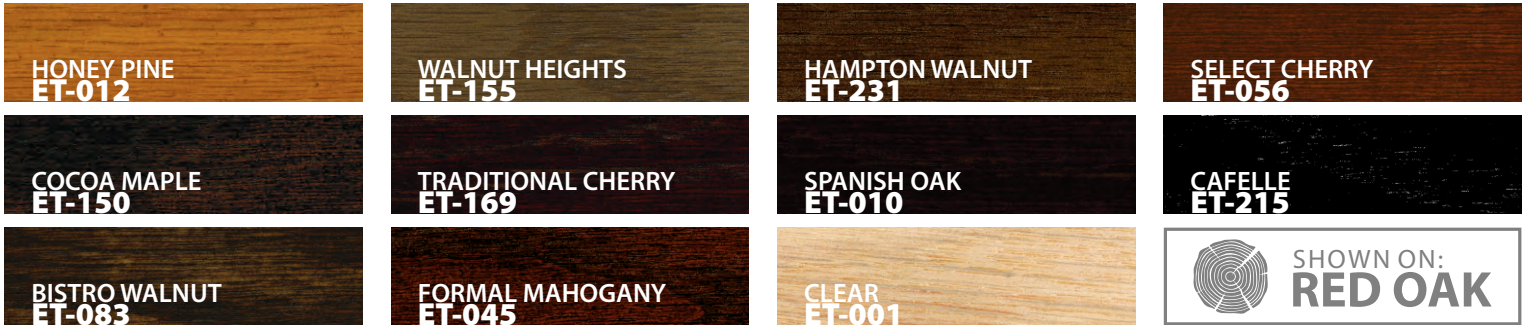
DWG# 36492 DIM: 4" X 5 3/4" X 4 1/4"

- Powder coated metal
- Fits onto existing slatwall displays
- Fits (1X) wine bottle

MATERIALS



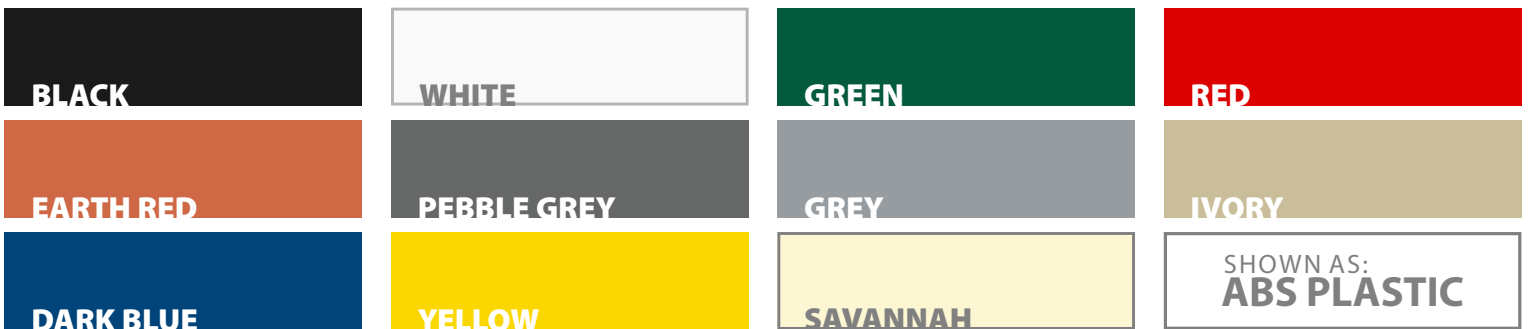
LACQUER STAINS



POWDERCOAT



FINISHES



For a full list of finishes, please consult with your area sales representative.

**Payment Terms**

Net 30 days with approved credit.

Credit Card Policy

All credit card orders must include card number, name as it is printed on the credit card, expiration date, & security code if required.

International Orders

All international orders are handled by advance wire payment only. Please contact our office at 817-244-8300 or one of our representatives for details.

Tax Policy

Final product destinations in CA, FL, MI, NJ, OH, TX & WA will have sales tax added to the invoice. Final product destinations in other states may be required to add applicable sales tax.

Warranty Information

All equipment manufactured by the Marco Company is warranted by the Marco Company to function for a period of one year from the date of purchase. Any equipment that is defective due to poor workmanship or materials will be replaced at no charge or your money will be refunded. For purposes of this warranty, material defects exclude the natural variant & characteristics of wood products. This warranty does not cover circumstances beyond our control such as abuse, freight damages, failure to follow proper guidelines in assembly and/or maintaining the equipment, or natural disasters.

Shipping & Handling

The customer is responsible for all freight charges. The Marco Company will work to ship your order using the most appropriate method & carrier. The Marco Company will prepay & add freight charges to the invoice. Our Customer Service Department will track shipments, provide freight quotes, & proofs of delivery. International shipping is available to most countries. Please provide the United States export forwarder information when placing the order. This includes the name, address, & phone number. Shipping does not include inside delivery. All customers are responsible for unloading from the carriers' tailgate. Anyone with special delivery requirements should include instructions at the time of ordering.

RMA Policy

The Marco Company takes great care in packaging every order, so that it arrives in good condition. All returns require a Return Material Authorization (RMA) number. Please contact Marco Company Customer Service at 1-800-356-2848 if you need to obtain an RMA.

Concealed Damage

The Marco Company will repair or replace concealed damage items reported within 4 days of delivery. The customer will be responsible for all returns and replacement freight charges.

Non-Defective Returns

All non-defective returns, when RMA granted, will be subject to a restocking fee. Custom items are non returnable. Customer is responsible for all return freight charges

Returns Processing

Upon receipt of returned product, Marco Company will inspect and notify you that we have received your return. Upon inspection and return is approved we will initiate an exchange or a refund.

All returns are subject to a 35% restocking fee.

Limited Liability

Customer's sole & exclusive remedy for any alleged defects or nonconformity of products shall be, at The Marco Company's option, repair, replacement or refund or credit for a pro rata portion of the purchase price attributable thereto. Under no circumstances shall The Marco Company be liable for any special, incidental, consequential, exemplary, punitive, multiple, personal injury or property damages, or other indirect or liquidated damages, costs or loss of profit incurred by Customer as a direct or indirect result of design, manufacturing, sale, installation or use of products or any defect or nonconformity in the products, or delay or failure or delay of delivery, whether based on warranty, contract, tort, strict liability, negligence, or otherwise, regardless of whether The Marco Company was aware of or should have been aware of the possibility of such damages or costs. The Marco Company's liability in connection with the sale of products shall not exceed the net sales price of the defective products received by it.

Severability

These terms & conditions of sale shall not be construed against the party preparing them but shall be construed as if all parties jointly prepared these terms & conditions of sale & any uncertainty or ambiguity shall not be interpreted against any one party. If any provision hereof is held to be illegal, invalid or unenforceable under any present or future laws, such provision shall be fully severable & the terms & conditions herein shall be construed & enforced as if such illegal, invalid or unenforceable provision had never been made a part hereof. The remaining provisions herein shall remain in full force & effect & shall not be affected by such illegal, invalid or unenforceable provisions or by their severance here from.

Governing Law/Exclusive Forum

These terms & conditions shall be governed by & be construed in accordance with the internal laws of the State of Texas, without regard to the conflicts of laws principles thereof. Parties hereby irrevocably submit all disputes &/or claims to the jurisdiction of the United States District Court for the Northern District of Texas, &, if such court does not have jurisdiction, of the courts of the State of Texas in Tarrant County, for the purposes of any proceeding arising out of these terms & conditions, or the subject matter hereof or thereof, brought by any other party.

Catalog Notes

The Marco Company makes all reasonable efforts to ensure the information in this catalog is correct; however, it is possible errors may occur. The Marco Company is not liable for misprints or other errors in this catalog. In addition, The Marco Company reserves the right to change pricing, minimum order requirements or product specifications & availability without prior notice. The Marco Company strongly recommends customer testing of product to ensure product meets all customer requirements for all intended applications.



FULL SPECTRUM RETAIL SOLUTIONS
800.356.2848
@MARCOCOMPANY