



# Starter<sup>®</sup> 5000

pH Bench Meter



## ***High Performance Bench Meter for Universal Applications***

Backed by OHAUS' century-old commitment to providing precise measurement, the Starter 5000 provides accurate pH and ORP measurement for high-level experiments and research. Enhanced features, advanced technology, and high performance have been combined to support complex laboratory tasks requiring pH measurement.

### ***Standard Features Include:***

- **Various High-Level Capabilities Propel Powerful Performance**—With a 1,000 measurement memory, eight predefined buffer groups, and three endpoint modes, Starter 5000 provides various ways to achieve precise pH measurement.
- **Advanced Software and Technology Support Complex Applications and Intuitive Operation**—Starter 5000 has a user-friendly interface, similar to other smart devices used daily. With a large LCD touchscreen display, users will find themselves intuitively navigating through all applications.
- **Enhanced Features Offer Protection & Simple Use of this Advanced Meter**—Starter 5000 also has many features that promote ease of use, convenience, as well as protection, including a standalone electrode arm, IP54 housing and in-use cover.

# Starter 5000 pH Bench Meter

## Various High-Level Capabilities Propel Powerful Performance

High resolution

- 0.001/0.01/0.1pH
- 0.01/0.1/1 mV

Advanced Memory

- **Large memory bank can store the data of up to 1,000 individual measurements**

Heightened Performance

- **Meter can be set to record continuous measurement at designated intervals of time**

—Graphs can be simultaneously generated

- **Starter 5000 has a GLP measurement mode that records critical information such as User ID and sample ID to generate complete and traceable information**

- **10 sensors that can store the results of 10 separate calibrations for each sensor**

— pH-mV axis graphs can be viewed for each set of calibration data

— An alert can be set to remind user to calibrate the meter

Accuracy

- **Up to a nine point calibration ensures extreme precision with a large calibration curve that covers a wider pH measurement range**
- **Manual, automatic, and time endpoints produce enhanced results**
- **Eight predefined buffers and one customizable buffer are standard**

## Advanced Software and Technology Support Complex Applications and Intuitive Operation

All of Starter 5000's features are at your fingertips. The color touchscreen display operates similar to everyday products such as smartphones and tablet computers.

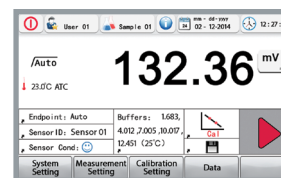
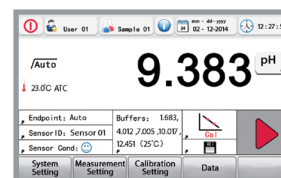
Color Touchscreen Display

- **4.3" high-resolution color touchscreen has large digits and well-arranged icons**

— Recognizable icons provide direct, one-touch access to important information including user ID, sample ID, date, time, current calibration group, and sensor performance where you can check detailed calibration data

— Return to the main menu from any screen with just one button tap on the display

- **One touch toggling between pH, mV(ORP) and Rel.mV**



## Enhanced Features Offer Protection & Practical Operation of this Advanced Meter

### Protection

- **IP54 housing protects the meter from damage by water and dust particles**
- **The transparent in-use cover provides an extra layer of protection**



### Practical Operation

- **The positioning of the standalone electrode holder can be moved around the base to fit your workstation best and the height can also be adjusted for optimal viewing**
- **Use the built-in USB host port to export data or RS232 to connect a printer to the meter**

## Specifications

Model	ST5000
Measurement Range	-2.000 – 20.000 pH -2000.00 – +2000.00 mV -30°C – 130 °C
Resolution	0.1/0.01/0.001pH 1/0.1/0.01mV 0.1 °C
Error Limits/Accuracy	± 0.002 pH ± 1 mV ± 0.1 °C
Buffer Group	8 predefined groups, 1 self define group
pH Calibration	1-9 points
Memory	1000 sets, with 10*10 calibration data
Power Supply	110-240V/50-60Hz, 9 V DC
Size/Weight	220 W × 175 D× 78 H mm / 0.55 kg
Display	Color Touch-Screen LCD
Input	BNC, impedance >3*10e+12 Ω Cinch, NTC 30 kΩ
Output	USB & RS232
Temperature Compensation	ATC and MTC
Housing	ABS

Model	ST5000
ST5000-B	5000 meter, stand alone electrode holder, ST5000 in-use-cover, 4G USB-driver
ST5000-F	5000 meter, ST350 , pH buffer powder sachet

# Starter 5000 pH Bench Meter

## Starter 5000 Compatible Electrodes

Description	Model
3-in-1 glass shaft refillable pH Electrode	ST350
3-in-1 plastic gel pH Electrode(no need to fill)	ST320
3-in-1 plastic refillable pH Electrode	ST310
2-in 1 glass double salt bridge pH Electrode	ST260
2-in 1 glass muddy sample pH Electrode	ST230
2-in-1 plastic refillable pH Electrode	ST210
2-in 1 glass micro sample pH Electrode	STMICRO5
2-in 1 glass micro sample pH Electrode	STMICRO8
2-in-1 glass pure water sample pH Electrode	STPURE
Temperature Electrode	STTEMP30
Gel plastic ORP Electrode	STORP1
Refillable glass ORP Electrode	STORP2

## Buffers and Accessories

Description	OHAUS Item Number
pH buffer powder set (4.01; 7.00; 10.0)	83033971
Buffer pH1.68 250ml	30100424
Buffer pH4.01 250ml	30100425
Buffer pH6.86 250ml	30100426
Buffer pH7.00 250ml	30100427
Buffer pH9.18 250ml	30100428
Buffer pH10.01 250ml	30100429
Buffer pH12.45 250ml	30100440
Standard Conduct 10µs/cm 250ml	30100441
Standard Conduct 84µs/cm 250ml	30100442
Standard Conduct 1413µs/cm 250ml	30100443
Standard Conduct12.88mS/cm 250ml	30100444
pH electrode Reference Electrolyte	30059255
pH electrode protection solution (3M KCl)	30059256
pH sensor protect bottle (10 in bag)	30064800
Electrode holder stand alone	30058733
ST5000 In-use-cover	30129897
SF40A printer	30045641

## Compliance

- **Electromagnetic Compatibility:** FCC Part 15 Class A; ICES-003 Class A
- **Safety:** UL 60950-1 (AC adapter); CSA C22.2 60950-1 (AC adapter)

### OHAUS CORPORATION

\* 7 Campus Drive  
Suite 310  
Parsippany, NJ 07054 USA

Tel: 800.672.7722  
973.377.9000  
Fax: 973.944.7177

[www.ohaus.com](http://www.ohaus.com)

*With offices throughout  
Europe, Asia, and  
Latin America*

\*ISO 9001:2008  
Registered Quality  
Management System

