

NEW! PLT™ Pipette Leak Testing Unit

from BrandTech® Scientific

Improve process reliability with functional validation of air-displacement pipettes!

The most frequent cause of inaccuracy in piston-operated pipettes is leakage. This arises from damage either to the seals, pistons, or tip cones. Often not detectable by the naked eye, leaks lead to significant volume errors.

The BRAND PLT™ Pipette Leak Tester (patent pending) detects even the smallest leaks in air displacement pipettes within seconds.

- Limit values for all common sizes of single and multichannel pipettes in the volume range 1 µl to 10 ml are pre-programmed.
- Test with or without tips
- Results in seconds



To insure accurate results, air-displacement pipettes must be checked at regular intervals and the results must be compared with the ISO 8655-2 error limits. However, a calibration certificate only reflects the results at the time of testing. The time between these calibrations is crucial, since leaks can occur at any time. Well over 80% of pipettes sent in for repair have leaks and are outside their volume tolerances, even if they don't drip.

While the PLT unit cannot replace regular gravimetric testing, daily pipette checks can provide a safeguard during the periods between calibrations. Even the smallest leaks are detected and quantified! Process reliability for the pipettes is thus significantly improved.

Testing with and without the tip

To check the overall pipette system, the test is conducted with a tip mounted. When a leak has been identified, the test can be repeated without a tip to determine whether the leak arises from the tip cone/tip coupling region.

Dynamic or static test?

The **dynamic test** can rapidly determine whether a defective piston (contamination, scratches, etc.) has caused a leak. The pipette button must be pushed down numerous times during the measurement period. The associated piston movement allows a defective piston to be recognized.

In the **static test**, the pipette button is not pressed during the test procedure, i.e. the piston doesn't move. This will only determine a leak generally, without attributing it to a particular component.



Product appearance, catalog numbers, prices, specifications, and technical information are subject to change without notice.

Lab Rats Love
BrandTech!



BRANDTECH®
SCIENTIFIC, INC.

Toll Free: (888) 522-2726
www.brandtech.com

NEW!

Single-channel adapter

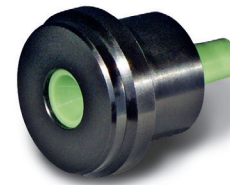
Display

"Start/Execute" button

LED display

"Back" button

Select knob



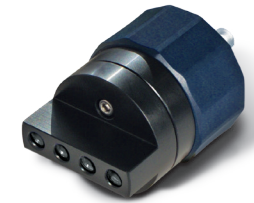
Single-channel adapter for pipettes with tip mounted



Single-channel adapter for pipettes without tip

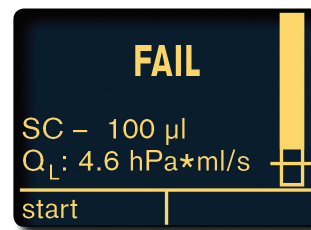
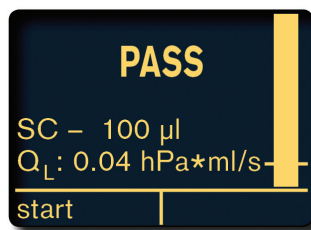
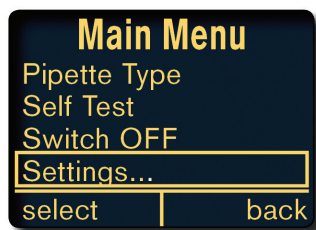


PE filter in single and multichannel adapters



Multichannel adapter for pipettes with and without tip

**PLT™
Pipette Leak Testing Unit**

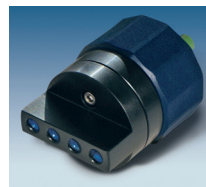


Quantifiable results are generated, with pass/fail criteria for each pipette size, based on over 35 years of experience.



PLT™ Pipette Leak Testing Unit

Including one adapter each for testing air-displacement pipettes with tip (mounted) and without tip, 2 plugs, 3 replacement PE filters for the pipette adapters, universal AC adapter, quality certificate and operating manual.
Cat. No. 703970



4-Channel Pipette Adapter for testing of multichannel pipettes with and without tips, including 4 plugs.
Cat. No. 703977



Filters
PE, for pipette adapter.
Pack of 10.
Cat. No. 703978



ORDERING INFORMATION

	BrandTech Cat. No.	2014 List Price
PLT Pipette Leak Testing Unit. Pack of 1.	703970	\$1,571.00
4-Channel Pipette Adapter. Pack of 1.	703977	\$205.00
Filters, PE, for pipette adapter. Pack of 10.	703978	\$10.60



Toll Free: (888) 522-2726
www.brandtech.com