

START HERE!

READ ME FIRST

Don't be a hero and muscle through this installation without reading these fitting instructions first! Improper installation of this gear may void certain aspects of your warranty.

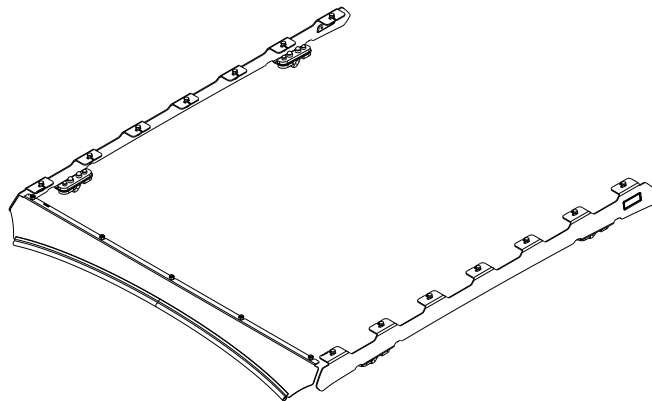
Before you begin, take a moment and open all your Front Runner rack kit boxes and gather the assembly instructions for the various components.

A complete kit will contain:

1. A Front Runner Mounting System specific to your vehicle
2. A Front Runner Rack Tray or Load Bar Slats

This document will guide you through the assembly of the mounting system and assist you in fitting the roof rack tray or load bars to your specific vehicle.

Please refer to the next page for a list of all the components, quantities and tools required.



IMPORTANT WARNING! ⚠️

IT IS CRITICAL THAT ALL FRONT RUNNER PRODUCTS BE PROPERLY AND SECURELY ASSEMBLED AND ATTACHED TO YOUR VEHICLE. IMPROPER ATTACHMENT COULD RESULT IN AN AUTOMOBILE ACCIDENT, AND COULD CAUSE SERIOUS BODILY INJURY OR DEATH. YOU ARE RESPONSIBLE FOR ASSEMBLING AND SECURING ALL FRONT RUNNER PRODUCTS TO YOUR VEHICLE, CHECKING THE ATTACHMENTS PRIOR TO USE, AND PERIODICALLY INSPECTING THE PRODUCTS FOR ADJUSTMENT, WEAR AND DAMAGE. THEREFORE, YOU MUST READ AND UNDERSTAND ALL OF THE INSTRUCTIONS AND PRECAUTIONS SUPPLIED WITH YOUR FRONT RUNNER PRODUCT PRIOR TO INSTALLATION OR USE. IF YOU DO NOT UNDERSTAND ALL OF THE INSTRUCTIONS AND CAUTIONS, OR IF YOU HAVE NO MECHANICAL EXPERIENCE AND ARE NOT THOROUGHLY FAMILIAR WITH THE INSTALLATION PROCEDURES, YOU SHOULD HAVE THE PRODUCT INSTALLED BY A PROFESSIONAL INSTALLER OR OTHER QUALIFIED PERSONNEL.

NOTE: Front Runner will not be responsible for any damage caused by the failure to install the product according to these instructions.

Please call us if you have any questions about the installation of this product.

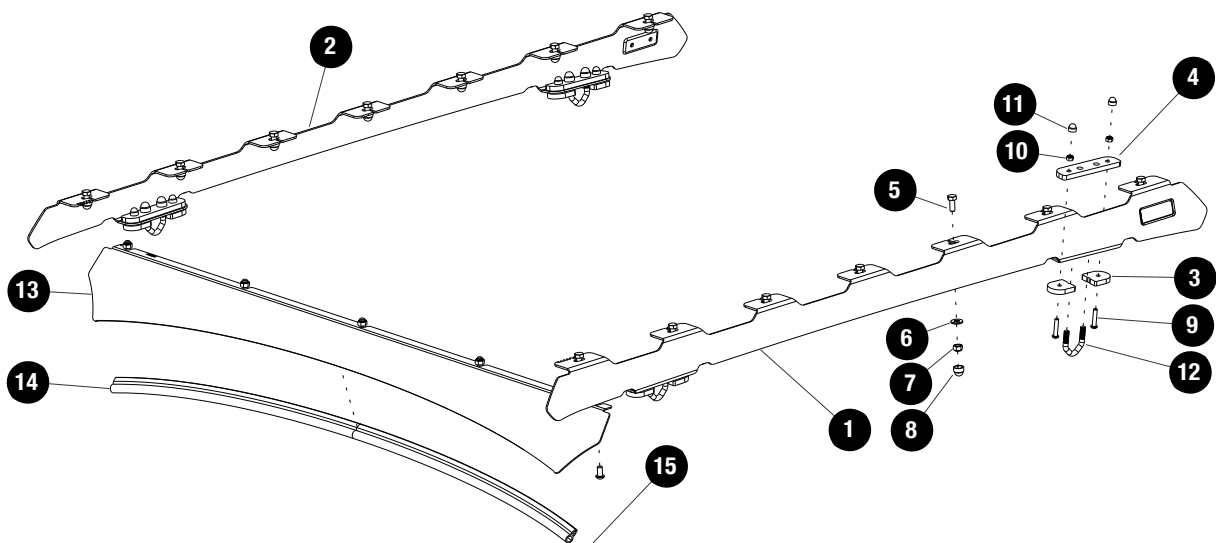
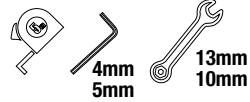


1 GET ORGANIZED

IN THE BOX

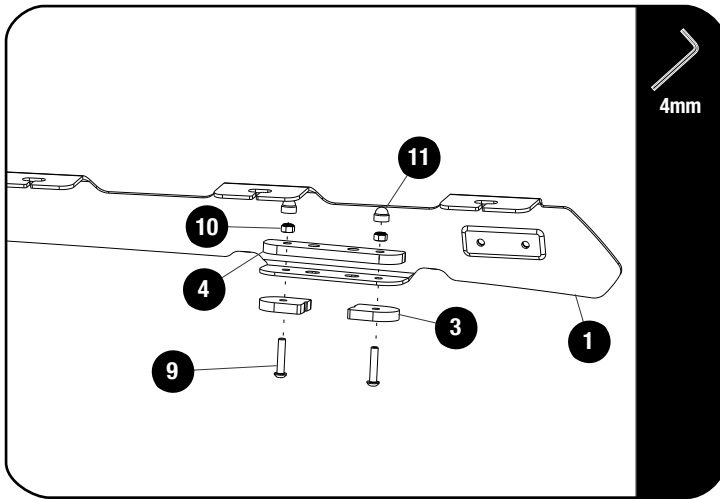
1	1 X	Left Hand Side Foot Rail
2	1 X	Right Hand Side Foot Rail
3	8 X	Bottom Spacer Small
4	4 X	Bottom Spacer Large
5	14 X	M8x20 Hex Head Bolt
6	14 X	M8 x 19 x 2 Flat Washer
7	27 X	M8 Nyloc Nut
8	22 X	M8 Nut Cap
9	8 X	M6 x 30 Button Head Screw
10	8 X	M6 Nyloc Nut
11	8 X	M6 Nut Cap
12	4 X	M8 V Bolts
13	1 X	Wind Fairing
14	1 X	Wind Fairing Rubber
15	5 X	M8 x 16 Button Head Screw

TOOLS NEEDED



2**FIT AND SECURE**

2.1



Fit the large metal spacer (Item 4) to the top of the mounting flange and the smaller plastic spacers (Item 3) to the underside of the flange as shown using M6x30 Button Head Screws (Item 9) and M6 Nylocs (Item 10).

Fully tighten

Place the M6 Nut Caps (Item 11) over all eight M6 Nyloc Nuts.

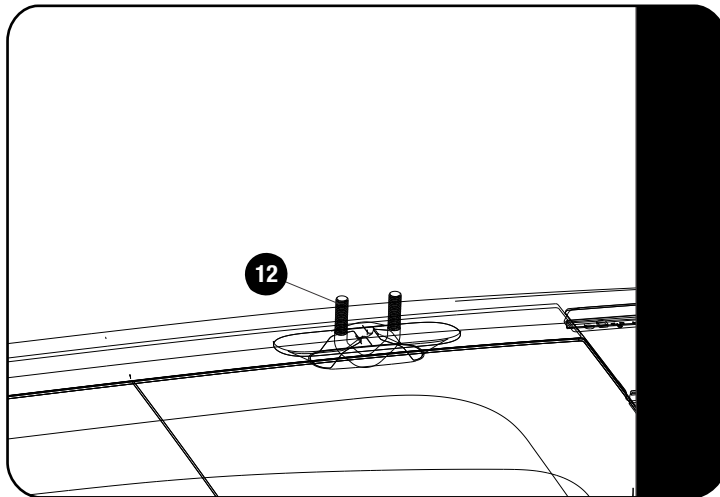
Do this on all 4 feet on the Foot Rail.



Tightening Torque:

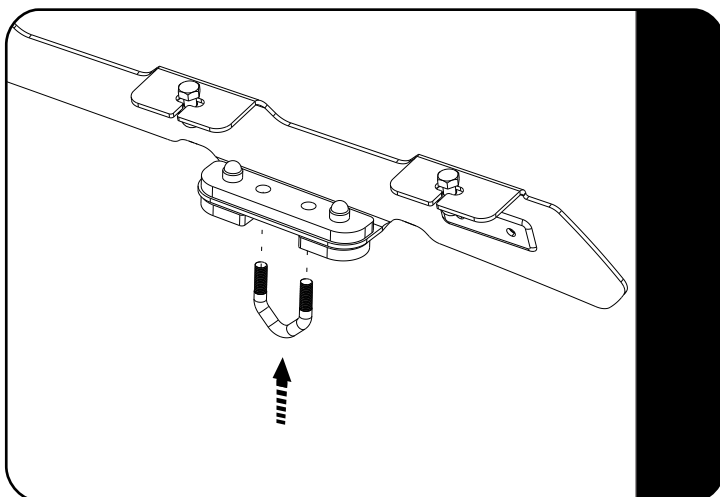
M6 : 8-10Nm / 5.9 ft lb - 7.38 ft lb

2.2



Place the M8 V Bolt (Item 12) into and around each of the four accessory ports as shown.

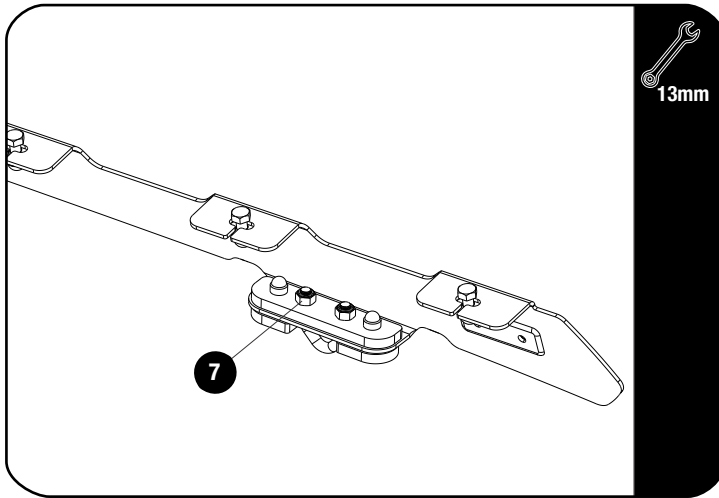
2.3



Place the Foot Rail assembled in step 2.1 over the accessory ports and insert the V bolt through the Foot Rail Base as shown.

2**FIT AND SECURE**

2.4



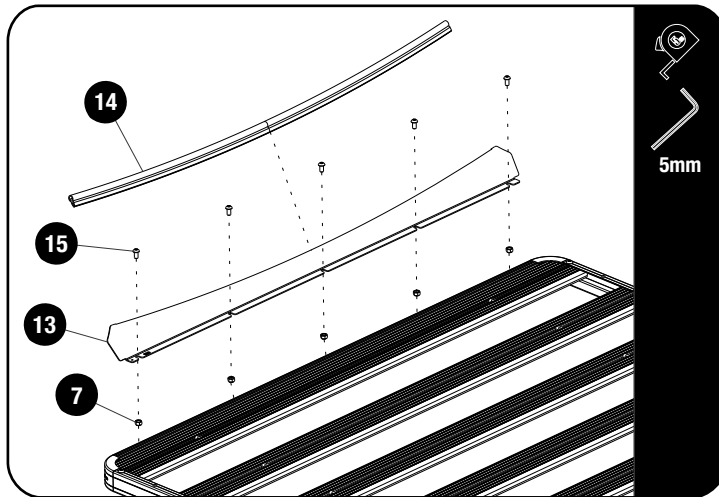
⌛ Thread the M8 Nyloc Nuts (Item 7) onto the M8 V Bolts and tighten equally alternating between the 2 nuts.

Check the alignment of the plastic spacers over the accessory ports and center before fully tightening.

Do this on both the left and right hand side.
Place eight M8 Nut Caps over all M8 Nuts.



DO NOT OVER TIGHTEN! 8 - 10 NM



Remove one of the rack corners and then turn the rack upside down. Load the Nyloc Nuts (Item 7) into the combined slat.

Loosely bolt the Wind Fairing (Item 13) to the combined slat of the rack using the M8 x 16 Button Head Bolt (Item 15) and the M8 Nyloc Nuts (Item 7).

Use a tape measure to center the Wind Fairing an Fully tighten.

Place the Wind Fairing Rubber (Item 14) on the Wind Fairing.

3

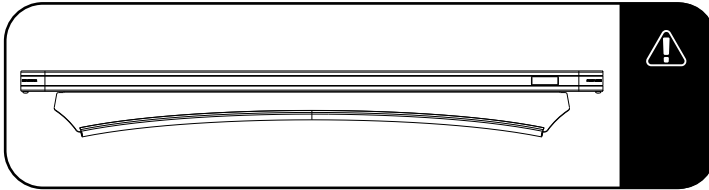
FIT AND SECURE

3.1

Refer to RRSUNI when assembling your Slimline II Tray.

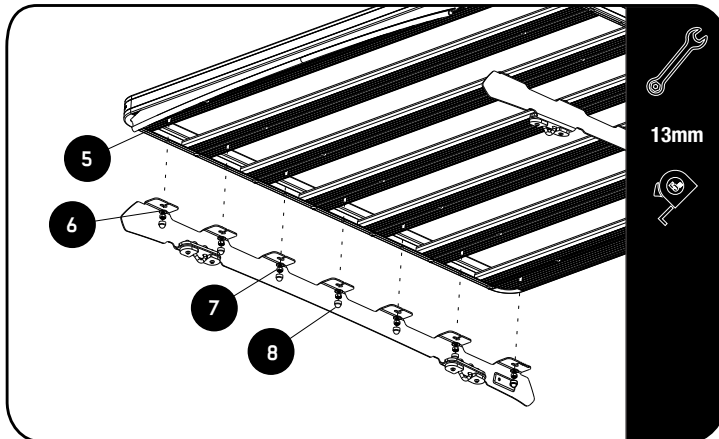


3.2



Make sure that the wind deflector is installed before you proceed to the next step.

3.3



13mm



Fit your roof rack to the Foot Rails using M8 x 20 Hex Bolts, M8 x 16 x 1.6SS Flat Washers and M8 Nyloc Nuts (Items 5, 6 & 7) as shown and center left to right. Fully Tighten and then put M8 Nut Caps (Item 8) on all the M8 Nyloc Nuts.



Tightening Torque:

M8 : 15-20Nm / 11.06 ft lb - 14.75 ft lb

4

COMPLETION

4.1

Congratulations! You did it. Take a step back and admire your work!



5

INSTALL OTHER VEHICLE AND RACK ACCESSORIES

Now's the time to visit your favorite Front Runner dealer in person or online.

IMPORTANT!

FRONT RUNNER RACK KITS OFTEN HAVE A HIGHER LOAD RATING THAN THE VEHICLES THEY ARE MOUNTED TO. PLEASE REFER TO YOUR SPECIFIC VEHICLE MANUFACTURER FOR A RECOMMENDED ROOF RATING. FRONT RUNNER CANNOT BE RESPONSIBLE FOR IMPROPER LOADING BEYOND THE VEHICLE MANUFACTURER'S STATED LOAD CAPACITY.

Be sure to tag us. We love to see our gear in action! #FrontRunnerOutfitters #BornToRoam

Share your adventures on: