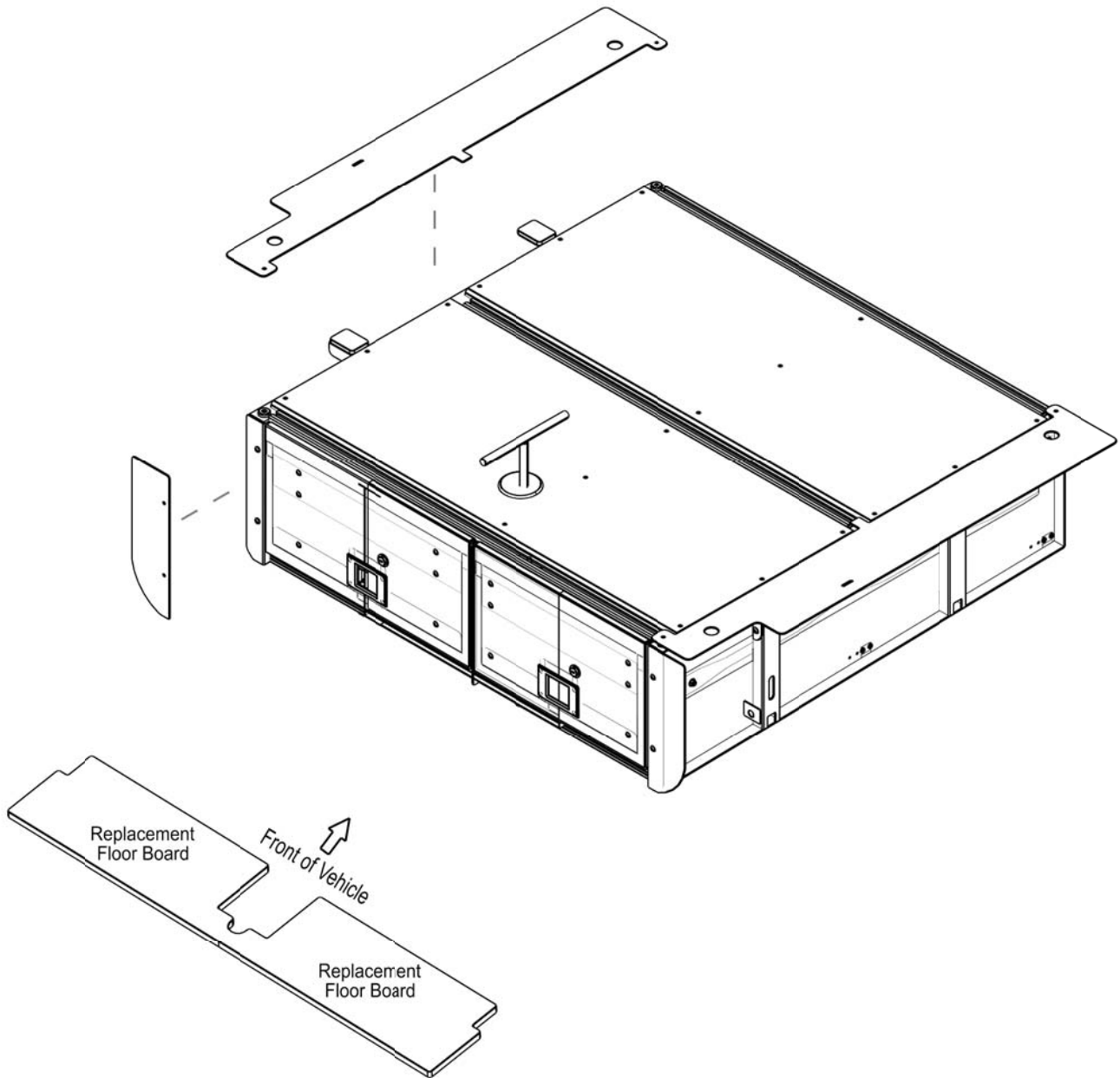




INSTALL TIME: 15 mins

You will need:

- 3 mm Hex Key
- 4 mm Hex Key
- 8 mm Flat Wrench
- White Marker
- Utility Knife
- Tape Measure

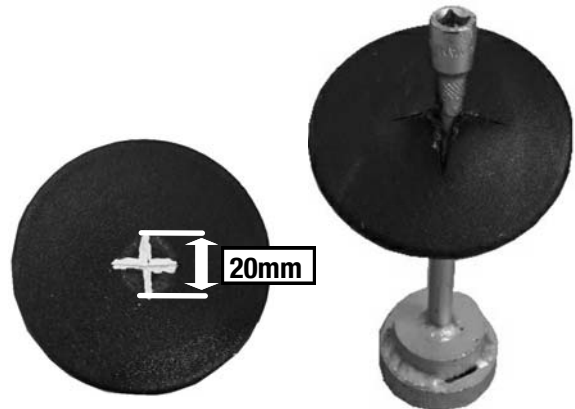


1 FIT DRAWER SYSTEM CONT

- (A) If your vehicle came with a second row of rear seats, lift the left hand seat to expose the wheel winder mechanism. If the mechanism is covered with a cap, remove the cap.

If your vehicle did not come with a second row of rear seats, remove the rear floor board to expose the wheel winder mechanism. The mechanism will be covered by a cap, remove the cap.

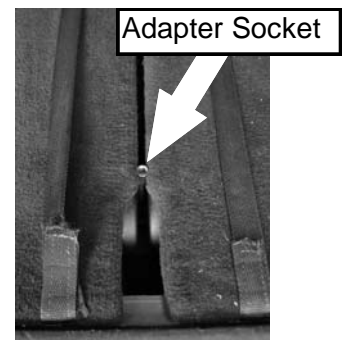
- (B) You have received two wheel winder Adapter Sockets and a T-bar with your Draw System. The vehicle's wheel winder mechanism is model dependant. Select the appropriate Adapter for your vehicle. In the center of the cover cap removed in Step 1A, mark and cut a cross 20 mm x 20 mm in the cap. Push the cap over the appropriate Adapter Socket as shown.



Place the Adapter Socket over the wheel winder mechanism and slide the cover cap down the Adapter Socket's shaft and into position.

- (C) If your vehicle did not come with the second row of rear seats as mentioned in Step 1A. Fit the replacement rear floor board supplied with your Draw System. The cut out in the center of the floor board goes towards the front of the vehicle.

If your vehicle came with the second row of rear seats, lower the left hand seat making sure that the Adapter Socket sits between the two seats as shown.



- (D) Fit the four Deck Side Skirt Support Brackets.



- (E) Place the Draw System into the vehicle lining up the front of the Draw System with the edge of the load bay area. There should be a slight gap between the Draw System and the interior door flap when the flap is in the upright position.

Ensure that the Draw System is centered left to right. Once happy with the positioning secure the Draw System to the vehicle using the Turn Buckles supplied as shown below. Tighten the securing nut on each Turn Buckle to prevent it from coming loose.



1 FIT DRAWER SYSTEM CONT...

- (D) Fit the pinch weld supplied to the outer edge of the two Front Cover Panels supplied.

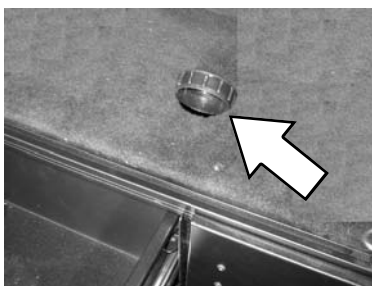
To complete the installation, fit the Front Covers and Deck Side Skirts to the Draw System.



Congratulations, you have completed your installation. Take a step back and admire your work. Good Job!

2 LOWERING THE SPARE WHEEL

- (A) Remove the Plastic Cap. Open the left hand side draw and insert the T-bar supplied through the hole and attach it to the Wheel Winder "Socket" with extension fitted in Step 1B. Turn the T-bar anti-clockwise to lower the spare wheel.



3 INSTALL OTHER VEHICLE AND RACK ACCESSORIES

- (A) Now's the time to visit your favorite Front Runner dealer in person or online.