**READ ME !** 

Thank you for purchasing a Front Runner Land Rover Defender 90 / 110 Ladder.

Before you start, take a moment to familiarize yourself with the Fitting Instructions and the components received.

Refer to Page 2 for a list of all the components, quantities and tools required.

**IMPORTANT WARNING!** 

IT IS CRITICAL THAT ALL FRONT RUNNER PRODUCTS BE PROPERLY AND SECURELY ASSEMBLED AND ATTACHED TO YOUR VEHICLE. IMPROPER ATTACHMENT COULD RESULT IN AN AUTOMOBILE ACCIDENT, AND COULD CAUSE SERIOUS BODILY INJURY OR DEATH. YOU ARE RESPONSIBLE FOR ASSEMBLING AND SECURING ALL FRONT RUNNER PRODUCTS TO YOUR VEHICLE, CHECKING THE ATTACHMENTS PRIOR TO USE, AND PERIODICALLY INSPECTING THE PRODUCTS FOR ADJUSTMENT, WEAR AND DAMAGE. THEREFORE, YOU MUST READ AND UNDERSTAND ALL OF THE INSTRUCTIONS AND PRECAUTIONS SUPPLIED WITH YOUR FRONT RUNNER PRODUCT PRIOR TO INSTALLATION OR USE. IF YOU DO NOT UNDERSTAND ALL OF THE INSTRUCTIONS AND CAUTIONS, OR IF YOU HAVE NO MECHANICAL EXPERIENCE AND ARE NOT THOROUGHLY FAMILIAR WITH THE INSTALLATION PROCEDURES, YOU SHOULD HAVE THE PRODUCT INSTALLED BY A PROFESSIONAL INSTALLER OR OTHER QUALIFIED PERSONNEL.

**NOTE:** Front Runner will not be responsible for any damage caused by the failure to install the product according to these instructions.

Please call us if you have any questions about the installation of this product.

# 1

## GET ORGANIZED

### IN THE BOX

1	1 X	Land Rover Defender Ladder
2	2 X	M6 Flat Washer
3	2 X	M6 Spring Washer
4	2 X	M6 x 60 Cap Srew
5	2 X	M8 Nyloc Nut
6	2 X	M8 Flat Washer
7	4 X	M8 PVC Flat Washer
8	2 X	M8 Flat Washer
9	2 X	M8 x 35 Hex Bolt
10	2 X	M8 Nut Cap
11	2 X	M10 Nyloc Nut
12	3 X	M10 x 30 x 3 SS Flat Washer
13	1 X	Spacer
14	1 X	M10 Flat Washer
15	1 X	Bottom Step
16	1 X	M10 x 80 Hex Bolt
17	1 X	M10 x 100 Hex Bolt

### TOOLS NEEDED

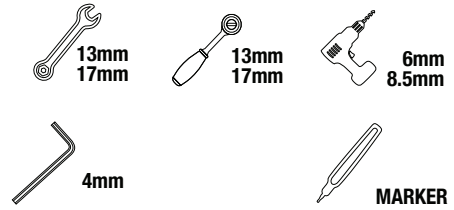
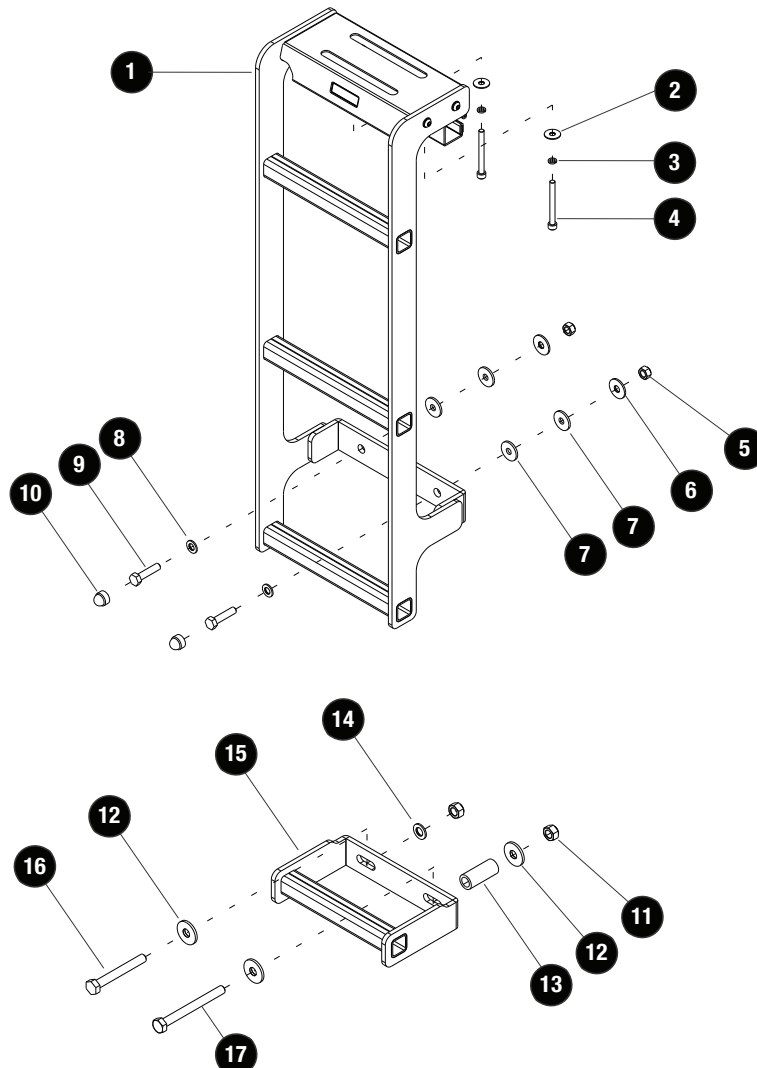


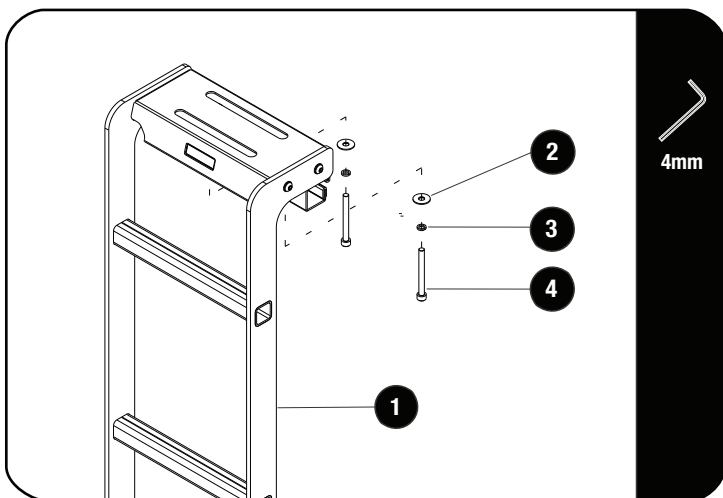
FIGURE 1.1



## 2

## FIT AND SECURE

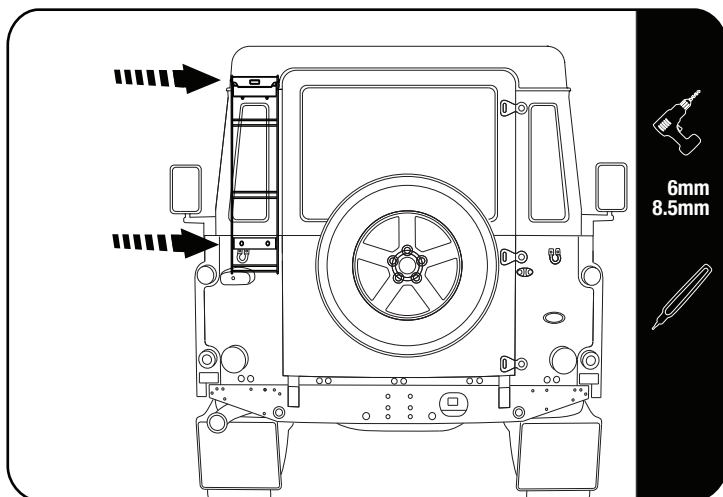
2.1



Remove the M6 Flat Washers, M6 Spring Washers and M6 x 60 Cap Screws (Item 2,3 & 4) from the Ladder (Item 1).

Swing open the Ladder's Top Clamp for fitment and place in vehicle's gutter.

2.2



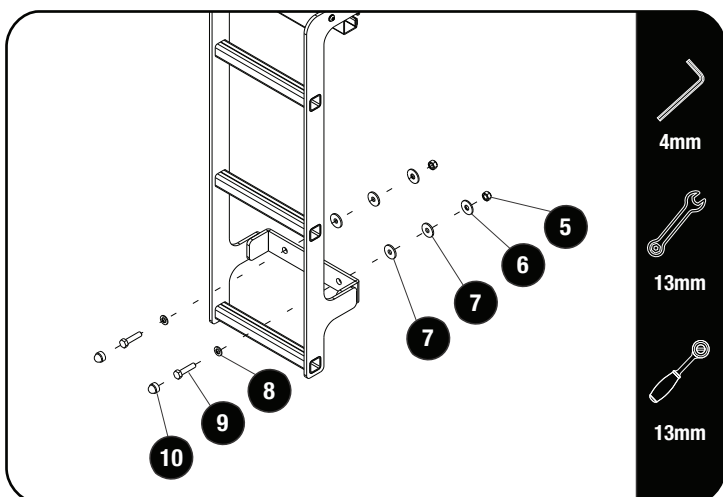
Inside the vehicle, remove the rear left window cover and speaker box.

Place the Ladder onto the vehicle's gutter and line up as shown in 2.2.

Check door clearance and make sure the ladder is aligned straight with the door.

Mark the bottom two holes of the Ladder on the vehicle's body and remove the Ladder. Using a drill machine and a 6mm drill bit, drill two pilot holes on your markings. Change to a 8.5mm drill bit and drill the holes to 8.5mm.

2.3



Place the ladder back onto the vehicle and line up the holes in the bottom of the Ladder with the holes drilled in 2.2.

Insert two M8 x 35 Hex Bolts and two M8 Flat washers (Item 9 & 8) through the holes in the Ladder. Place two M8 PVC Flat Washers (Item 7) over each bolt between the vehicle and the Ladder. Secure on the inside of the vehicle using two M8 Flat Washers and two M8 Nyloc Nuts (Item 6 & 5).

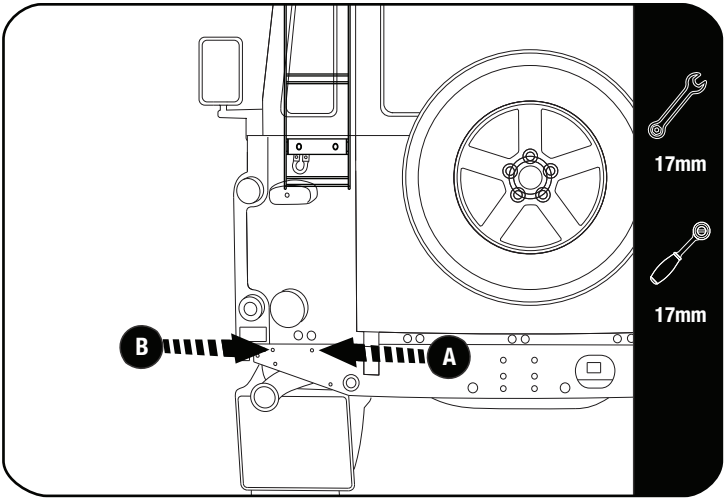
Insert fixings removed earlier in 2.1 and fully fasten.

Refit rear left window cover and speaker box.

**3**

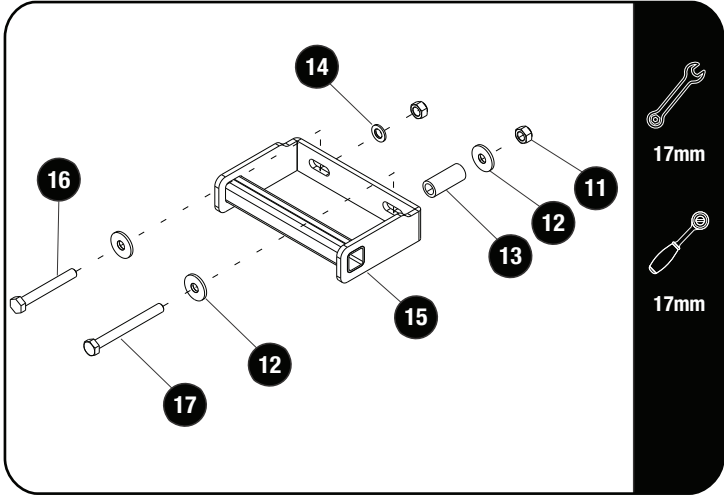
**FIT AND SECURE**

**3.1**



Remove the two original bolts from the bumper and place the Bottom step (Item 15) against the body, and align with the two holes in the bumper as shown.

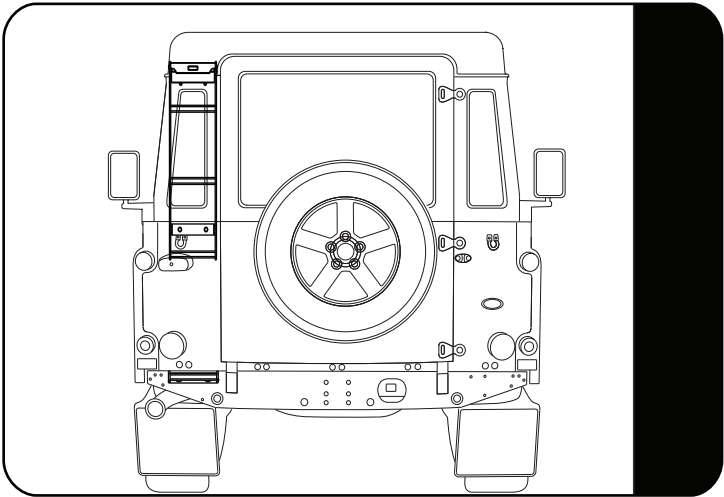
**3.2**



Refer to 3.1 & 3.2 and insert the M10 x 100 Hex Bolt with a M10 x 30 x 3 Flat Washer (Item 17 & 12) into the right hole marked "A". Behind the bumper insert the Spacer (Item 13) between the bumper and the "Tab" attached to the body/bumper. Guide the Hex Bolt through the Spacer and loosely fasten using a M10 x 30 x 3 Flat Washer and M10 Nyloc Nut (Item 12 & 11).

For the left side marked "B", insert the M10 x 80 Hex Bolt and M10 x 30 x 3 Flat Washer (Item 16 & 12) and loosely fasten using a M10 Flat Washer and M10 Nyloc Nut (Item 14 & 11)

**3.3**



Align the Bottom step and Fully tighten all bolts. To complete the job fit two M8 Nut Caps (Item 10).

3

### **FINISH**

Congratulations! You did it. Take a step back and admire your work!

4

### **INSTALL OTHER VEHICLE AND RACK ACCESSORIES**

Now's the time to visit your favorite Front Runner Dealer in person or online.

Be sure to tag us. We love to see our gear in action! #FrontRunnerOutfitters #BornToRoam

Share your adventures on:

