

BAJARACK WARRANTY



This Limited Warranty covers BajaRack products and all accessories for a period of 2 years from the date of purchase to the original owner of the product and does not apply once the equipment is sold or transferred to another person.

This Warranty does not cover the cost of removal of reinstallation or the product. BajaRack warrants (subject to conditions listed in this warranty) all products to be free of manufacturing defects in materials and workmanship.

Warranty claim requirements

The claim has to be submitted during the warranty period at the place of purchase or directly at our corporate office located:



BajaRack Adventure Equipment
2275 Michael Faraday Drive, Suite 6
San Diego, CA 92154 USA
Phone Number: 760-621-0171

On your product you will find a label with a serial number. If you remove this label, please save the serial number in a safe place. You will need it if you want to make a warranty claim in the future. Any cost incurred to transport the defective product "to and from" will be the customer's responsibility.



Warranty resolution

Subject to BajaRack inspection of the product, the company will remedy defects in materials and/or workmanship by repairing or replacing, at BajaRack's option, the defective product without charge for parts or labor, subject to the limitations and exclusions described in this warranty. BajaRack may elect, at its option, not to repair or replace a defective product, in which case BajaRack will issue to the original retail purchaser, at BajaRack's option, either a full refund equal to the purchase price paid for the product, or a credit to be used toward the purchase of new BajaRack products or accessories.

Limitations of Liability

BajaRack is not liable for damage caused by shipping or transport of BajaRack products. It is the responsibility of the original retail purchaser to inspect all products prior to acceptance and to notify the shipping carrier in a timely manner so that any claim for damages can be made. If timely notification to the shipping carrier by the original retail purchaser is not made regarding damage caused during the transport of the product, a claim for damages may not be possible, and all liability falls to the original retail purchaser. This warranty does not apply if accident, abuse, misuse, collision, overloading, modification, misapplication, improper installation, or improper service has damaged the Product.

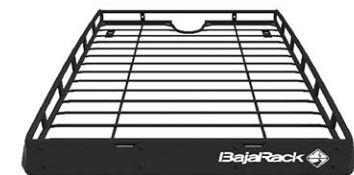
BAJARACK SHALL NOT BE LIABLE FOR ANY DIRECT, INDIRECT, CONSEQUENTIAL, INCIDENTAL, SPECIAL, EXEMPLARY, OR PUNITIVE DAMAGES OR FOR ANY OTHER DAMAGES OF ANY KIND OR NATURE [NO PERIOD.] (INCLUDING, BUT NOT LIMITED TO, LOST PROFITS, DOWN TIME OR LOSS OF USE) UNDER ANY LEGAL THEORY, EVEN IF BAJARACK WAS ADVISED OF THE POSSIBILITY OF SUCH DAMAGES. BAJARACK'S SOLE LIABILITY IS LIMITED TO THE REMEDY SET FORTH ABOVE.

BajaRack reserves the right to change Product design without notice.

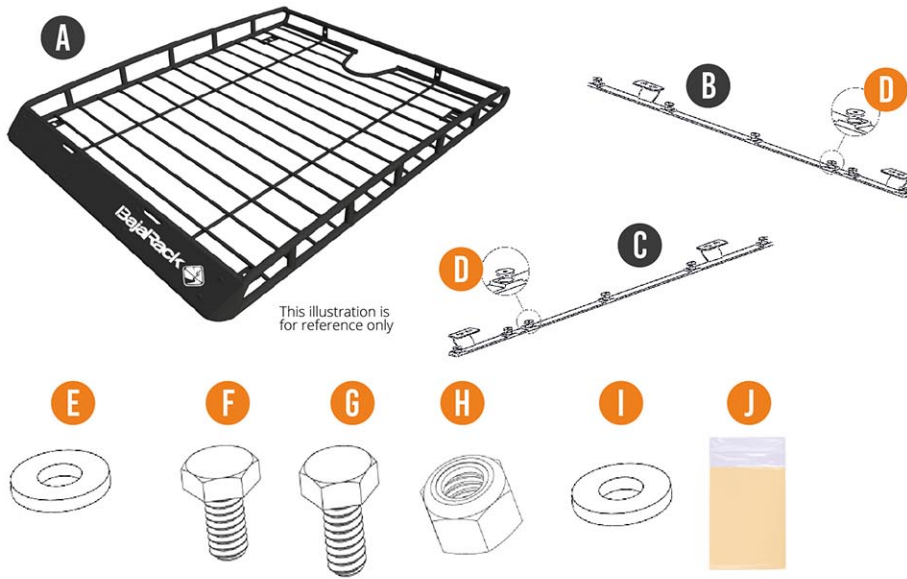


JEEP GRAND CHEROKEE WK2

(2010-2020)
STANDARD RACK



RACK COMPONENTS



- A) Rack (1x)
- B) A Support bar (1x) brackets
- C) B Support bar (1x) brackets

What's in the box

- D) Special Washers (12x)
- E) 1/4" OD flat washer stainless steel (12x)
- F) M6-1.0 x 25mm DIN 933 A2-70 Hex Cap screw stainless Steel (12x)
- G) 5/16"-18 3/4" Hex Cap Screw Stainless steel (8x)
- H) 5/16"-18 Nylon lock Nut Stainless steel (8x)
- I) 5/16" X0.75" OD flat washer stainless steel (16x)
- J) Grease, for use with all bolts with nuts. (1x)

Recommended Tools

- 1/2" wrench for installation
- 1/2" socket for support
- 10mm metric wrench for roof brackets intallation
- Torquemeter
- Screw driver (flat)

Tips and recommendations (please read)

- Please Install your rack with the help of a friend.
- The load limit of your rack is 200lb, please do not exceed.
- Your Rack is an accessory; it is not protection for rollovers

INSTALLATION STEPS

- 1 Remove the OEM side rails or Rubber trim located on the top of the roof.

Note: for the installation of the support bar B and C, please install from the back of the vehicle placing the first bolts in the back, then the rest of the bolts towards the front of the vehicle. The support bars are labeled to identify the driver (A-D pink) and passenger (A-P green) sides.



- 2 Place the support bracket and use bolt (F) and washer (E) and special washer (D) through the holes.



- 3 With the help of a friend, place the rack on top of the support bars, and insert bolts (G) with washer (I) on top and on the bottom washer (I) and locknut (H) in each hole as shown in Figure below.



INSTALLATION STEPS

Note: Remember to apply grease to the threads of the bolts before adding locknuts.



- 4 Tighten completely or use a torque wrench to tighten bolts (support bar to the rack) to 50 Inch-lbs. Finally, tighten roof bolts (F) washer (E) and special washer (D) completely on the support bars with a 10mm wrench. Be careful not to over tighten!



INSTALLATION STEPS



ENJOY
— YOUR NEW —
BAJARACK
ROOF RACK!



TECHNICAL SPECIFICATIONS

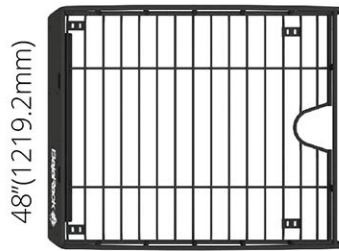
GRAND CHEROKEE WK2

BR-JPGCWK2-0

Standard Basket Rack (satellite antenna cutout)



5" tall
(127 mm)



48" (1219.2mm)

60" (1524 mm)

This Rack comes as one piece and includes all mounting brackets, stainless steel hardware, and aluminum wind deflector.

Material and Thickness: 1" (25.4mm) and 1/2"(12.7mm) Steel tubing

Top Wind Deflector: .062" (1.57mm) 5050-H32 Aluminum

Bottom Wind deflector: .062" (1.57mm) 5050-H32 Aluminum

Finish: Epoxy primer (rust inhibitor) with black powder coating

Rack weight: 42Lb (19.05Kg)

Weight Capacity: 200Lb (90.6 kg)

Measurements: 48"(1219.2mm) Wide x 60" (1524 mm) Long x 5" (127mm) tall

Cargo area: 16.93ft² (1.57m²)

Mounting method: Mounting support bar bracket (2 total)

COMPATIBLE ACCESSORIES



Fuel Can Holder



Axe & Shovel mount for 5" height racks



Awrmng mount for 5" height racks



Tent Plates



Hi-Lift mount for 5" height racks



Light Clamp mount



Maxtrax mount for 5" height racks



Solar panel mount



Tire mount



Water Can Holder



Yakima & Thule Accessory mount (2 pieces)



Yakima & Thule Accessory mount (4 pieces)



Light Bar LED mount for 48" width racks



Light Bar for 48" width racks (7" Lights)



Light Bar for 48" width racks (10" Lights)