

Installation Instructions

Front Bolt-On Look Fender Flares

Chevrolet Colorado (15-On)

FF1012

Important: Please read instructions entirely before installing this product.

Hardware Included	QTY
Extrusion	12 ft
Alcohol wipe	2

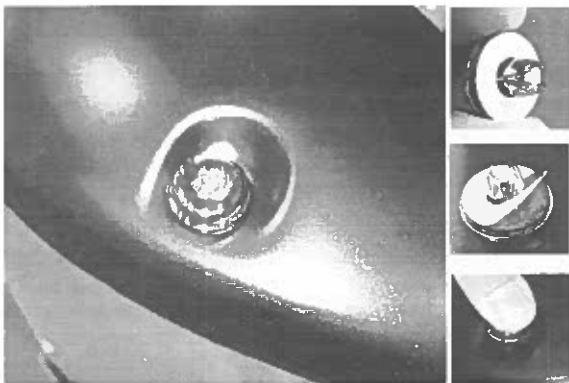
Hardware Included	QTY
Small U-Style Clip	4
Large U-Style Clip	4

Bolt Kit Included (Bolt-On look flare only)	QTY
Extruded Plastic Nuts	20

Ensure that both left and right hand front Fender Flares suit the profile of the vehicle. Note the areas where the Fender Flares come in contact with the vehicle. NOTE: Before fitting Fender Flares remove any moldings, strips or existing flares from the wheel arch. If there is a body side molding, mark where the molding is to be cut, alternatively the Fender Flare can be cut to go around the molding. Be sure to allow enough room for the extrusion. **No drilling of vehicle is required for Bolt-On Look Fender Flares. This is a non-drill product.**

***PRIOR TO ANY PAINTING & INSTALLATION, PRODUCT SHOULD BE THOROUGHLY INSPECTED FOR ALL COMPONENTS LISTED ABOVE. PRODUCT SHOULD ALSO BE TEST FITTED PRIOR TO ANY PAINTING & INSTALLATION. PLEASE CONTACT EGR IF YOU HAVE ANY FITMENT QUESTIONS AND OR MISSING COMPONENTS.**

PAINTING INSTRUCTIONS – If Fender Flares are being painted; do not install edge extrusion until painting is complete. Prior to painting, clean all surfaces to be painted using clean water and a mild detergent, do not use lacquer thinner or any solvent based products. Wipe completely dry. Best results will be achieved by wiping the areas to be painted with a tack rag just prior to painting. Most automotive paints can be applied directly to the Fender Flares, however some may require a primer (check paint manufacturer specifications). Good adhesion will be achieved without sanding. Select a paint (and primer if necessary) that is suitable for rigid plastics PMMA (Acrylic). If using a paint system that requires baking, do not expose the product to temperatures above 70°C (158°F). Do not fit the extrusion or any of the hardware to the Fender Flares until the paint is completely dry.



STEP 1: Attach the extruded plastic bolts. Peel back white tape liner from the bottom side of the extruded plastic bolt and press until it snaps into place. Ensure inside of Fender Flares where the rubber seal is attached is clean, using the alcohol wipes provided. Wipe away any residue with a dry clean cloth.



STEP 2: Attach the included rubber seal to the Fender Flares. Peel back 2" of the adhesive backing and position on the Fender Flare. Attach the seal to the Fender Flare, peeling back a few inches at a time. Ensure pressure is used to secure rubber seal to Fender Flare edge. Attach rubber seal along the top leading edge of the Fender Flare where it will make contact with the vehicle body.

Installation Instructions
Front Bolt-On Look Fender Flares
Chevrolet Colorado (15-On)

FF1012



STEP 3: Pulling at right angles to the extrusion, remove the liner from the extrusion in small portions and apply thumb pressure to ensure that it adheres to the Fender Flares.



STEP 4: Trim any unnecessary extrusion and discard.



STEP 5: Clean the body areas where the Fender Flares will make contact with a clean cloth.

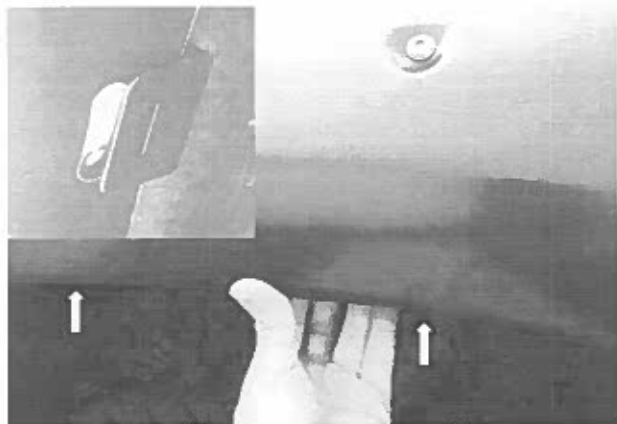
For models equipped with factory fender flares, removal of factory flares is required, please consult the vehicle service manual for factory fender flare removal.



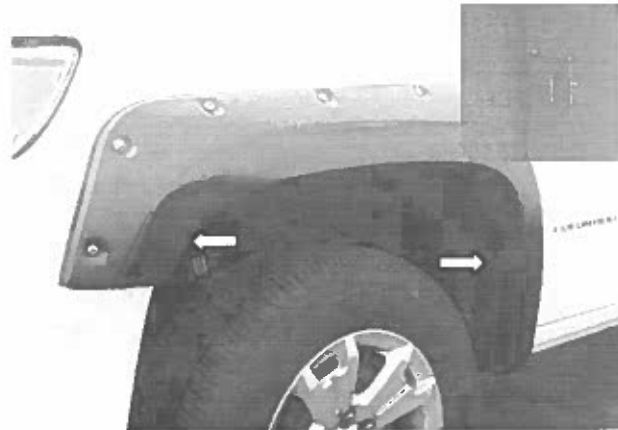
STEP 6: Locate the Torx screw at the lower section of the wheel well. Remove the Torx screw using a #15 Torx head screwdriver. Retain the screw for installation.

Installation Instructions
Front Bolt-On Look Fender Flares
Chevrolet Colorado (15-On)

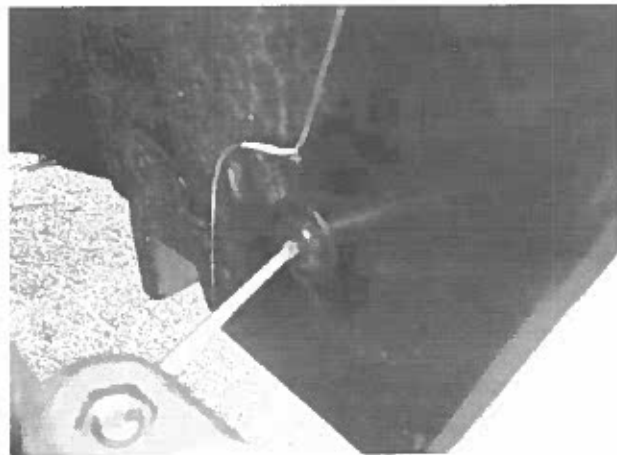
FF1012



STEP 7: Place the Fender Flare onto the vehicle and fit into the correct position following the contours of the body. Locate the 2 mounting slots on the top of the fender flare. Use 2 of the large U-style clips (indicated with an X on the clip) to attach the fender flare. Make sure the barb in the clip securely attaches in the slot on the Fender Flare.



STEP 8: Use 2 of the small U-style clips to secure the Fender Flare to the body. Make sure the barb in the clip securely attaches in the slot on the Fender Flare.



STEP 9: Reinstall the #15 Torx head screw.



STEP 10: Repeat installation method for other side. Double check the front Fender Flares to make sure all bolts are tight and clips are securely fastened. Your installation is now complete. Do not use abrasive cleaners.

Installation Instructions

Rear Bolt-On Look Fender Flares

Chevrolet Colorado (15-On)

FF1013

Important: Please read instructions entirely before installing this product.

Hardware Included	QTY
Extrusion	13.75ft
Alcohol Towelette	2

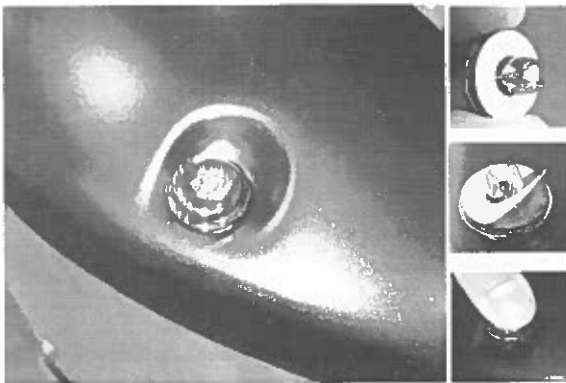
Hardware Included	QTY
U-Style Clip	8

Bolt Kit Included (Bolt-On look flare only)	QTY
Extruded Plastic Nuts	22

Ensure that both left and right hand rear Fender Flares suit the profile of the vehicle. Note the areas where the Fender Flares come in contact with the vehicle. **NOTE:** Before fitting Fender Flares remove any moldings, strips or existing flares from the wheel arch. If there is a body side molding, mark where the molding is to be cut, alternatively the Fender Flare can be cut to go around the molding. Be sure to allow enough room for the extrusion. **No drilling of vehicle is required for Bolt-On Look Fender Flares. This is a non-drill product.**

***PRIOR TO ANY PAINTING & INSTALLATION, PRODUCT SHOULD BE THOROUGHLY INSPECTED FOR ALL COMPONENTS LISTED ABOVE. PRODUCT SHOULD ALSO BE TEST FITTED PRIOR TO ANY PAINTING & INSTALLATION. PLEASE CONTACT EGR IF YOU HAVE ANY FITMENT QUESTIONS AND OR MISSING COMPONENTS.**

PAINTING INSTRUCTIONS – If Fender Flares are being painted; do not install edge extrusion until painting is complete. Prior to painting, clean all surfaces to be painted using clean water and a mild detergent, do not use lacquer thinner or any solvent based products. Wipe completely dry. Best results will be achieved by wiping the areas to be painted with a tack rag just prior to painting. Most automotive paints can be applied directly to the Fender Flares, however some may require a primer (check paint manufacturer specifications). Good adhesion will be achieved without sanding. Select a paint (and primer if necessary) that is suitable for rigid plastics PMMA (Acrylic). If using a paint system that requires baking, do not expose the product to temperatures above 70°C (158°F). Do not fit the extrusion or any of the hardware to the Fender Flares until the paint is completely dry.



STEP 1: Attach the extruded plastic bolts. Peel back white tape liner from the bottom side of the extruded plastic bolt and press until it snaps into place. Ensure inside of Fender Flares where the rubber seal is attached is clean, using the alcohol wipes provided. Wipe away any residue with a dry clean cloth.

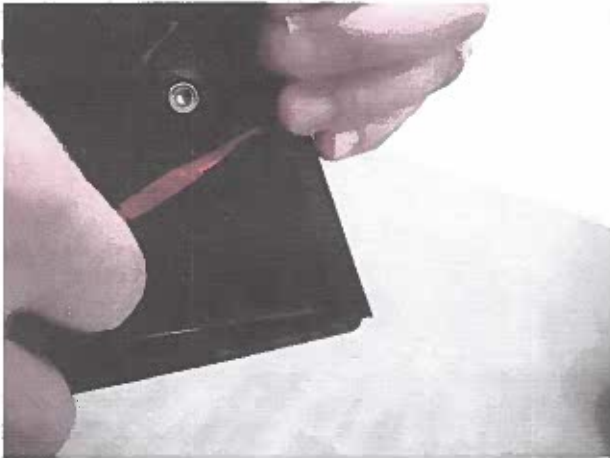


STEP 2: Attach the included rubber seal to the Fender Flares. Peel back 2" of the adhesive backing and position on the Fender Flare. Attach the seal to the Fender Flare, peeling back a few inches at a time. Ensure pressure is used to secure rubber seal to Fender Flare edge. Attach rubber seal along the top leading edge of the Fender Flare where it will make contact with the vehicle body.

Installation Instructions

Rear Bolt-On Look Fender Flares
Chevrolet Colorado (15-On)

FF1013



STEP 3: Pulling at right angles to the extrusion, remove the liner from the extrusion in small portions and apply thumb pressure to ensure that it adheres to the Fender Flares.

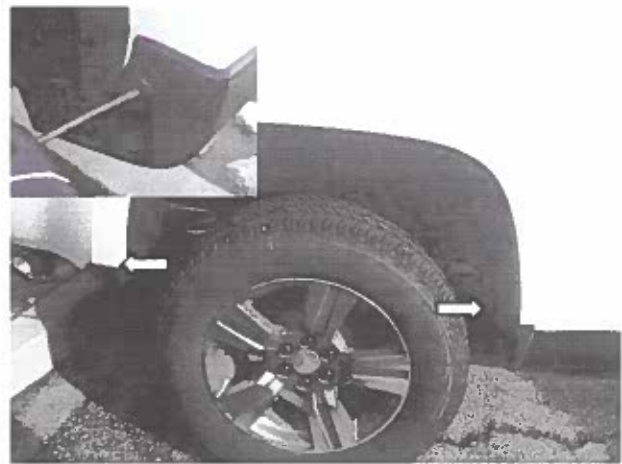


STEP 4: Trim any unnecessary extrusion and discard.



STEP 5: Clean the body areas where the Fender Flares will make contact with a clean cloth.

For models equipped with factory fender flares, removal of factory flares is required, please consult the vehicle service manual for factory fender flare removal.



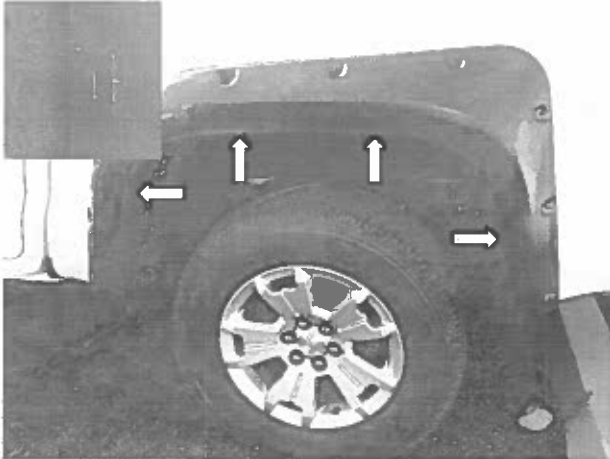
STEP 6: Locate the 2 outer screws. Remove the screws using a #15 Torx head screwdriver. Retain screws for installation.

Installation Instructions

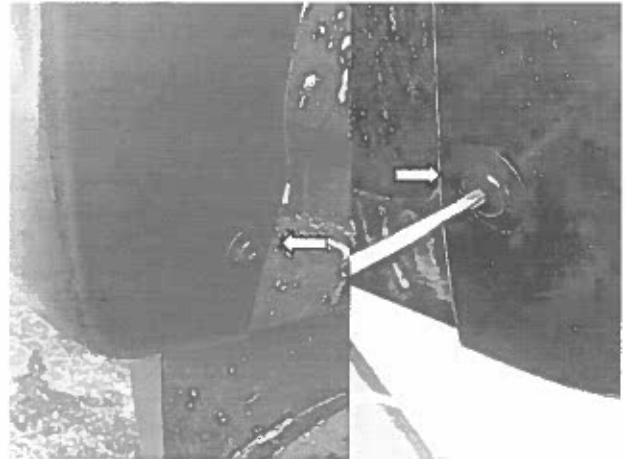
Rear Bolt-On Look Fender Flares

Chevrolet Colorado (15-On)

FF1013



STEP 7: Place the Fender Flare onto the vehicle and fit into the correct position following the contours of the body. Use 4 of the U-style clips to secure the Fender Flare to the body. Make sure the barb in the clip securely attaches in the slot on the Fender Flare.



STEP 8: Reinstall the #15Torx head screws.



STEP 9: Repeat installation method for other side. Double check the front Fender Flares to make sure all bolts are tight and clips are securely fastened. Your installation is now complete. Do not use abrasive cleaners.