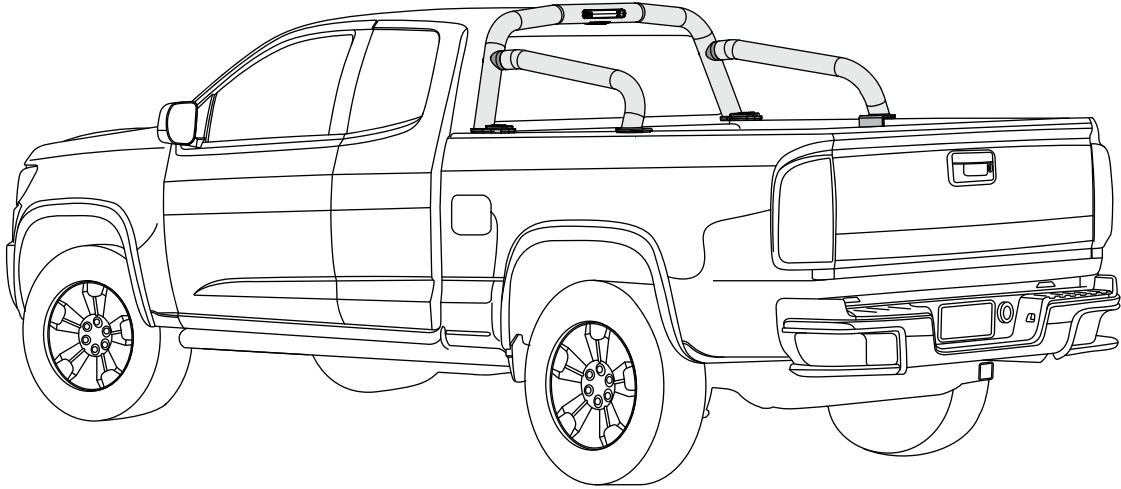
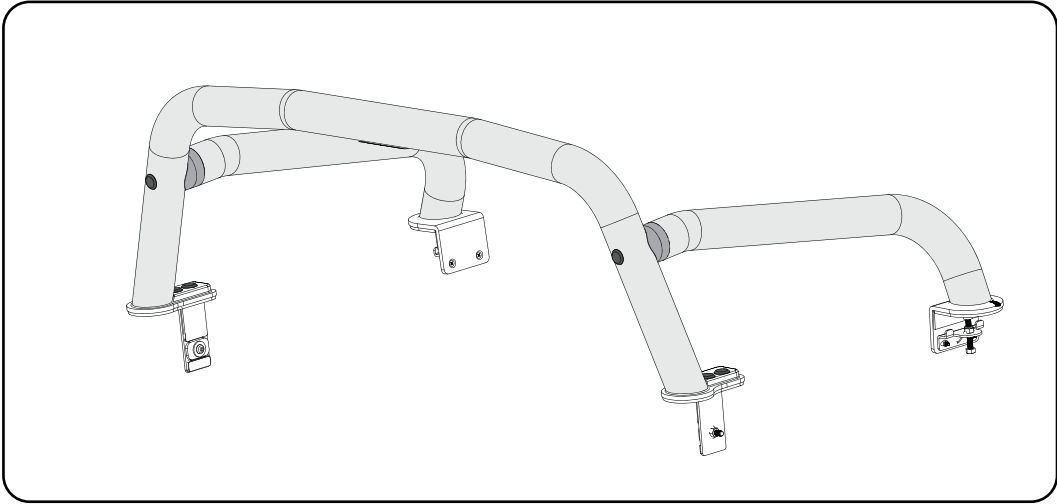

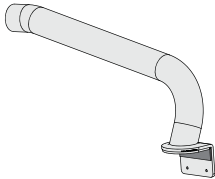
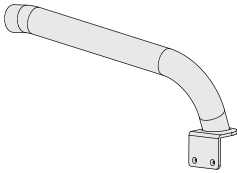
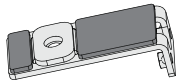
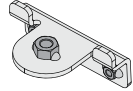
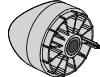
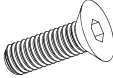



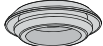


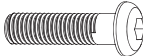




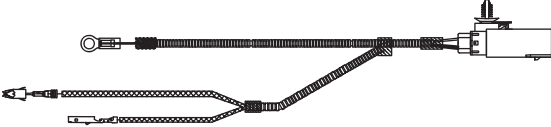


SPORTS BAR WITH INTEGRATED STOP LAMP INSTALLATION INSTRUCTIONS

Part Number: SBAR0104



LIST OF PARTS

No.	Item Description	Qty	Image
1	Front Sports Bar Tube	1	
2	Rear Sports Bar Leg LHS	1	
3	Rear Sports Bar Leg RHS	1	
4	Front Tube Bracket	2	
5	Rear Foot Plate Clamp Bkt	2	
6	Rear Tube Joiner	2	
7	M6x20 Foot Plate Screw	4	
8	Screw Cap	2	
9	M12X80 Tube Joiner Screw	2	
10	Rear Tube Joiner Spacer	2	
11	Front Foot Rubber Grommets	6	
12	M8X25 Foot Plate Bkt Screw	4	
13	M8X16X1.6 Foot Plate Washer	4	
14	M10X40 Front Bkt Screw	2	
15	M10X30 Foot Bkt Washer	2	
16	M10x65 Clamp Bolt	2	
17	Loom 1	1	
18	Loom 2	1	
19	Loom 3	1	

RECOMMENDED TOOL LIST

Socket Drive Handle and Extension Bar (½" Drive)	Torque Wrench Rated to at Least 30Nm
Socket Drive Allen Key Long Series M12 (Kincrome)	Phillips Head Screwdriver to Suit M4
Socket Drive Allen Key to Suit M6	Tape Measure
Socket Drive Allen Key to Suit M8	Utility Knife
Socket Drive Allen Key to suit M10	

General Notes

- Read through the fitting instructions before installation of accessory
- Always install the accessory following the fitting instructions. Failure to do so may cause damage to the vehicle or the accessory.
- Ensure all recyclable discarded vehicle/accessory components and packaging are recycled following local recycling regulations.
- It is always recommended that this accessory is fitted by a qualified technician.
- Safely store and protect any removed vehicle components.
- Ensure all bare metal surfaces are protected using Automotive Bare Metal Primer and touch-up paint.
- Remove all metal shavings and dust from all vehicle surfaces if surface is used for accessory installation.
- Ensure all fasteners are torqued to the specifications as per Fitting Instructions if applicable.

Safety Notes

- Check that all work practices comply with safety standards.
- Appropriate clothing & PPE must be worn.
- While using power tools or safety equipment, ensure safe procedures are followed.

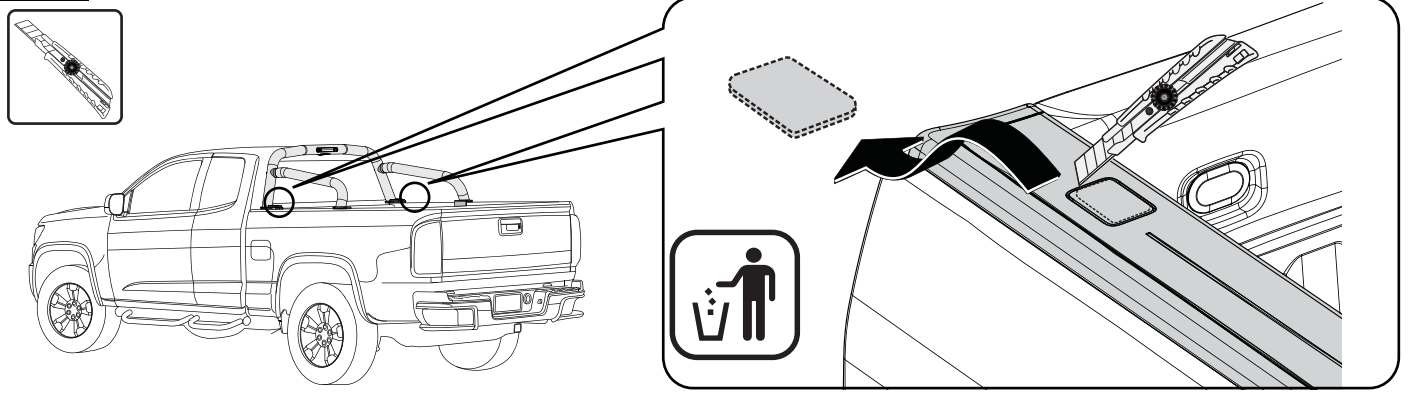
Cleaning, Care and Maintenance Notes

- Use a firm water spray to remove any loose dirt from the part, then wash with water, detergent and a soft cloth or sponge.
- Do not use petroleum based solvents.
- Stainless Steel surfaces can be maintained using metal polishes.
Use as recommended.

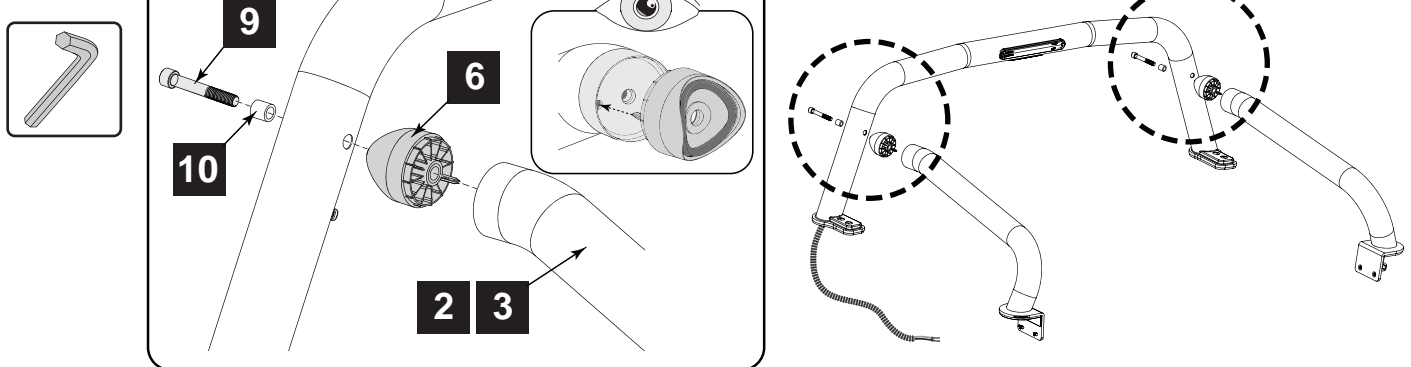
Important Warning



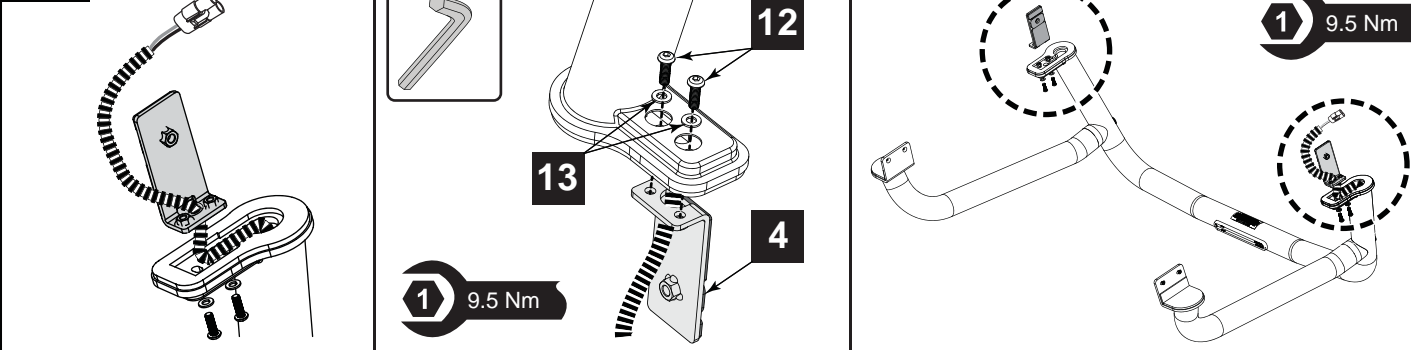
Product is decorative only and is not a safety feature!
Once installed, product does not enhance vehicle structure, integrity or safety.
The sport bar is not designed to prevent injury or death
in the event of a roll-over or other type of accident while the sportbar is installed

FIG. 1

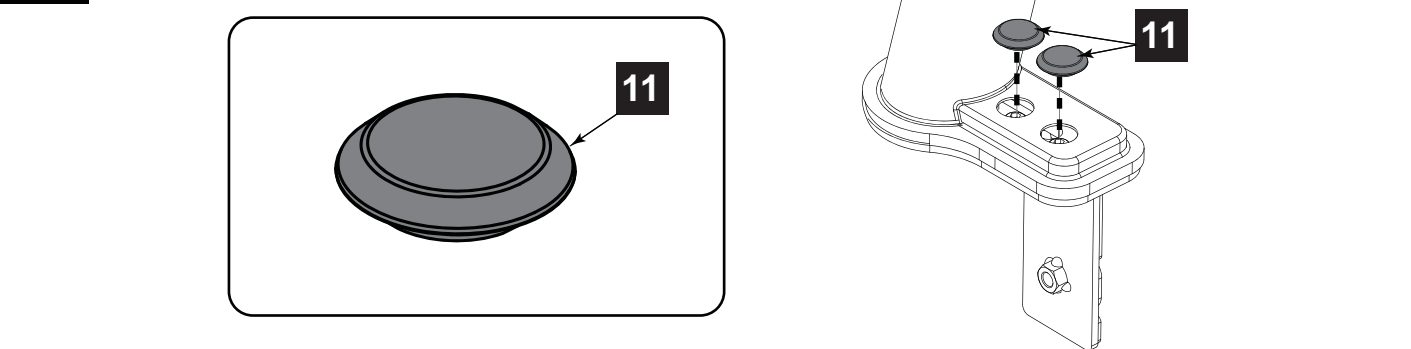
Using a utility knife carefully cut the plastic bed rail cap at the two front LHS & RHS rectangular inserts to make a clearance hole for the front feet of the Sports Bar. Follow the groove in the plastic bedrail cap and clean all burrs.

FIG. 2

Loosely assemble the Front Tube to the LHS side leg (2) with the spacer (10) and the screw (9). Line up the connector (6) and ensure the boss on the connector aligns with the hole in the side leg. Repeat for the opposite side.

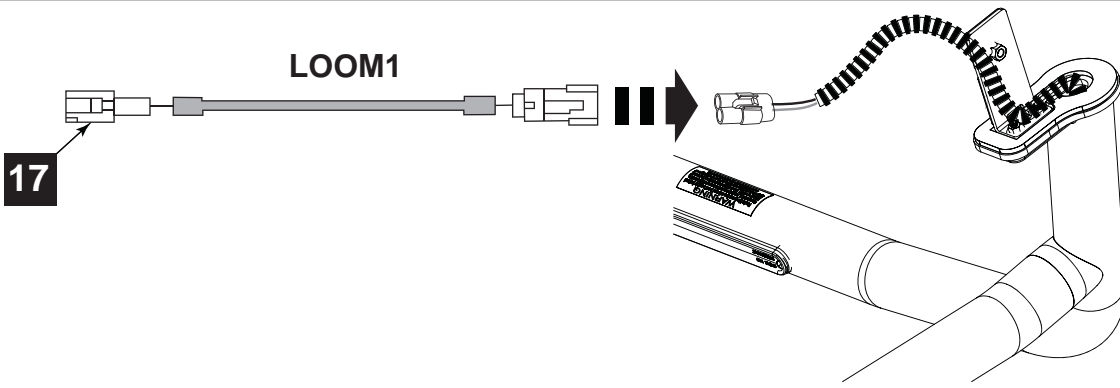
FIG. 3

Feed the stop lamp cable along the channel on the underside of the footplate and through the hole on the LHS Foot Plate Bracket. Attach the LHS Front Foot Plate Bracket (4) to the Front Tube Foot using the screws (12) and washers (13) and tighten to a torque of 9.5 Nm. Ensure that the stop lamp cable is engaged in the slot and not crimped by the bracket before tightening. Attach the Foot Plate Bracket for the RHS.

FIG. 4

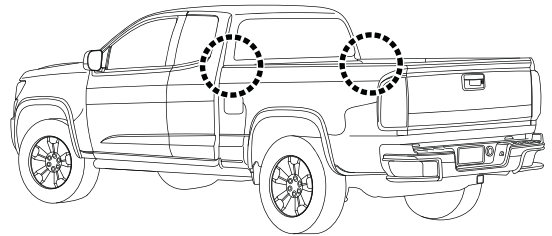
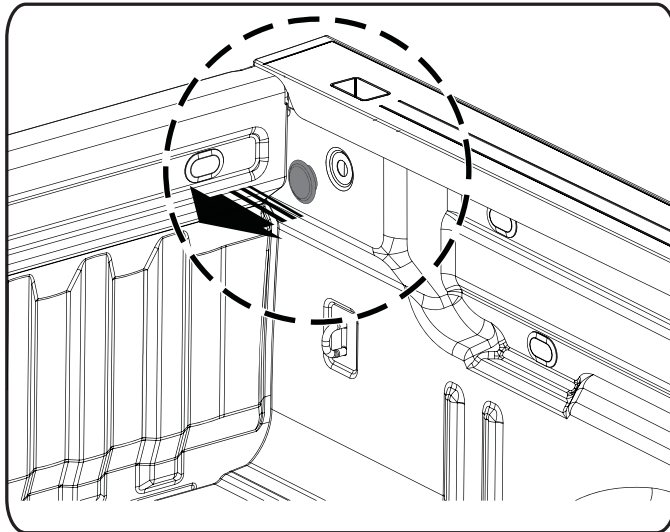
Insert the Front Foot Rubber Grommets (11) into the Front Foot Plates.

FIG.5



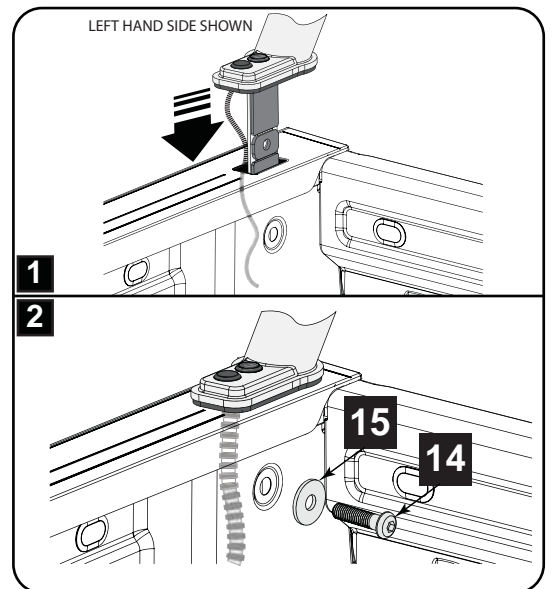
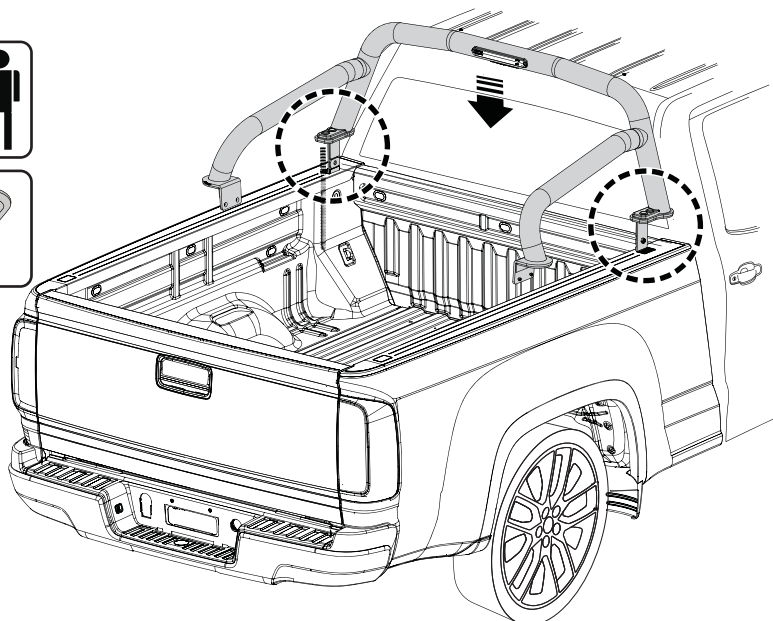
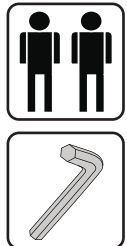
Connect the LOOM1 (17) to the SBAR loom as shown.

FIG.6

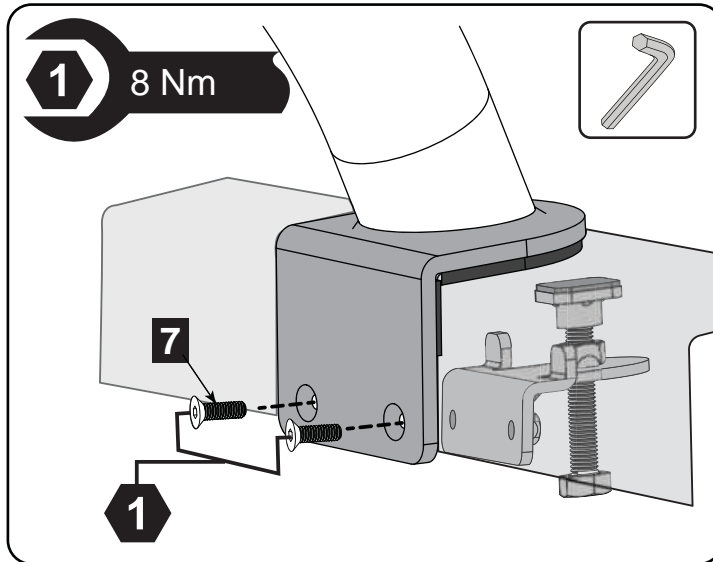
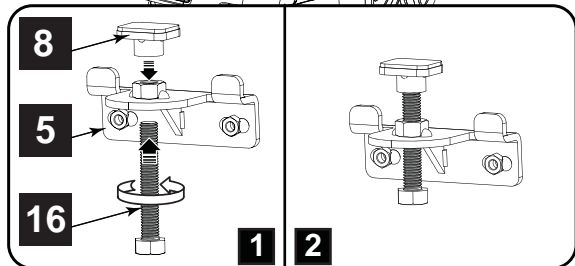
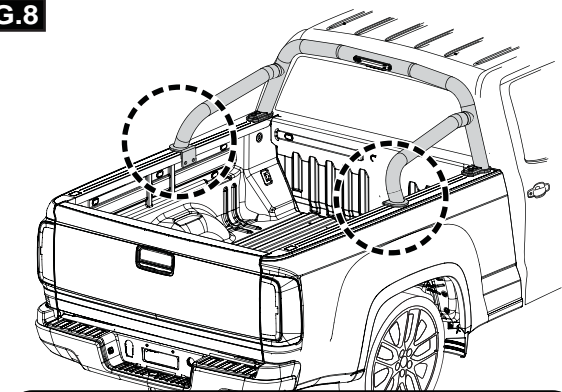


Remove and discard the plastic front side plugs from the Tub. Repeat for the opposite side.

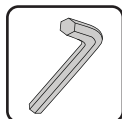
FIG.7



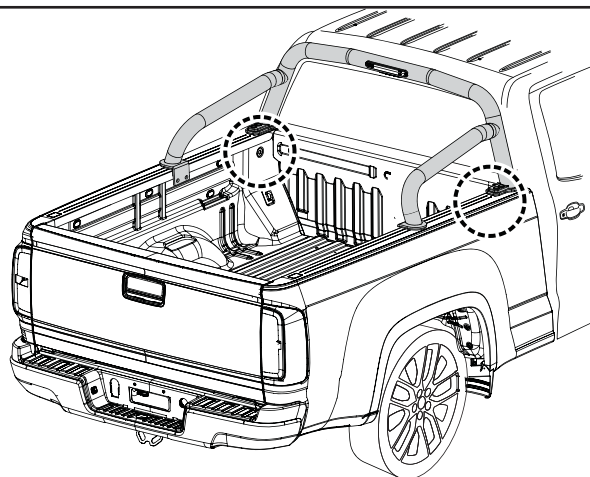
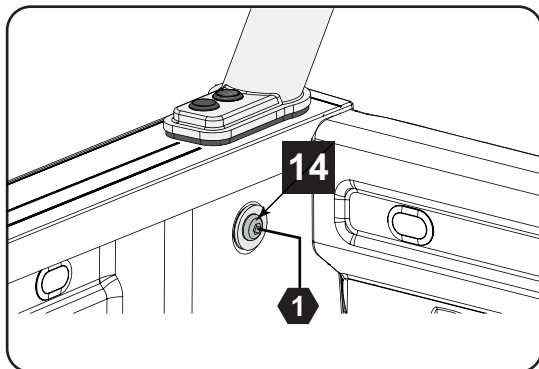
Using two people carefully lift the sports bar into position above the tub and insert the LED cable through the hole in the bed rail cap. Slowly follow by lowering the sports bar front foot through the bed rail hole and lower the sports bar assembly onto the tub of the vehicle. Loosely Secure the front foot to the tub using Screw (14) and Washer (15). Repeat for the opposite side.

FIG.8

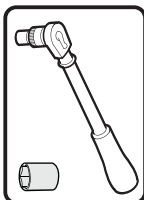
Assemble the rear foot clamp plates by screwing the Hex head bolts (16) into the clamp body (5) and attach the Screw Cap (8). Position the assembly on the inside of the tub and attach the Clamp Plate assemblies to the Rear foot of the sportsbar using screws (7). Repeat for the opposite side. Tighten the screws (7) to 8Nm using a Torque Wrench.

FIG.9

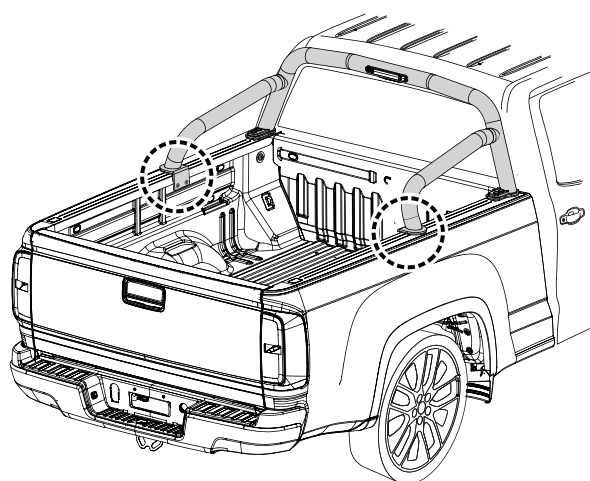
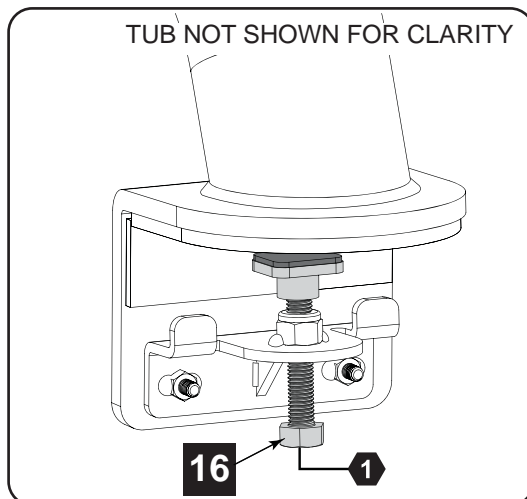
1 19 Nm



Tighten up the front screw (14) to a torque of 19Nm. Repeat for the opposite side.

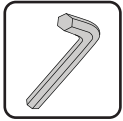
FIG.10

1 10 Nm

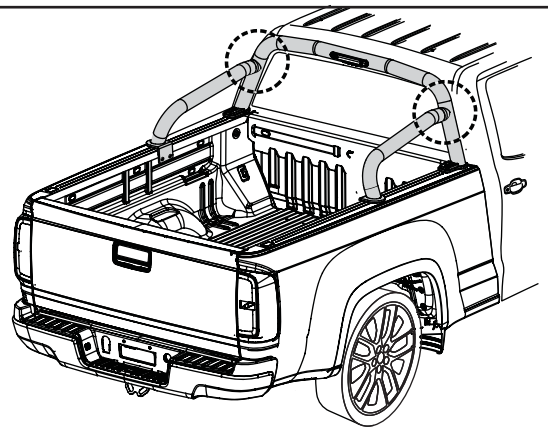
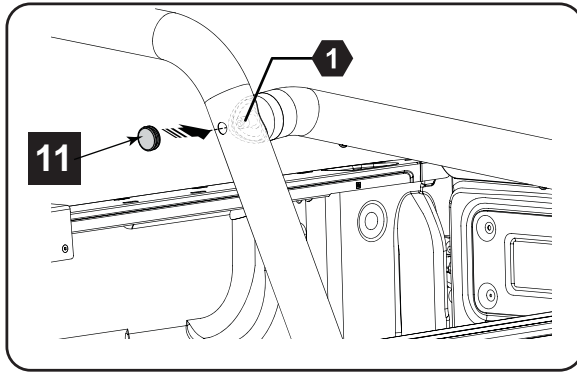


Tighten up the rear foot clamp plate bolts (16) to a torque of 10Nm. Repeat for the opposite side.

FIG.11

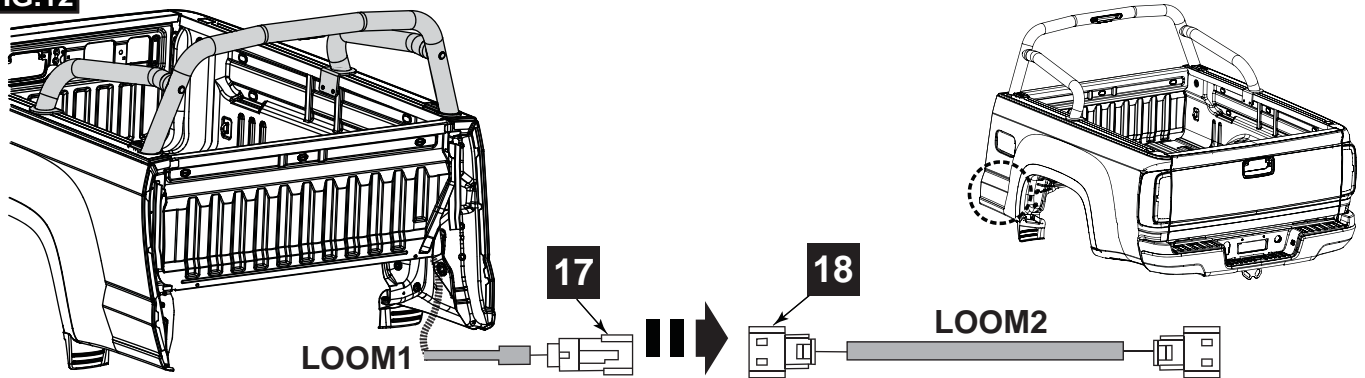


1 5 Nm



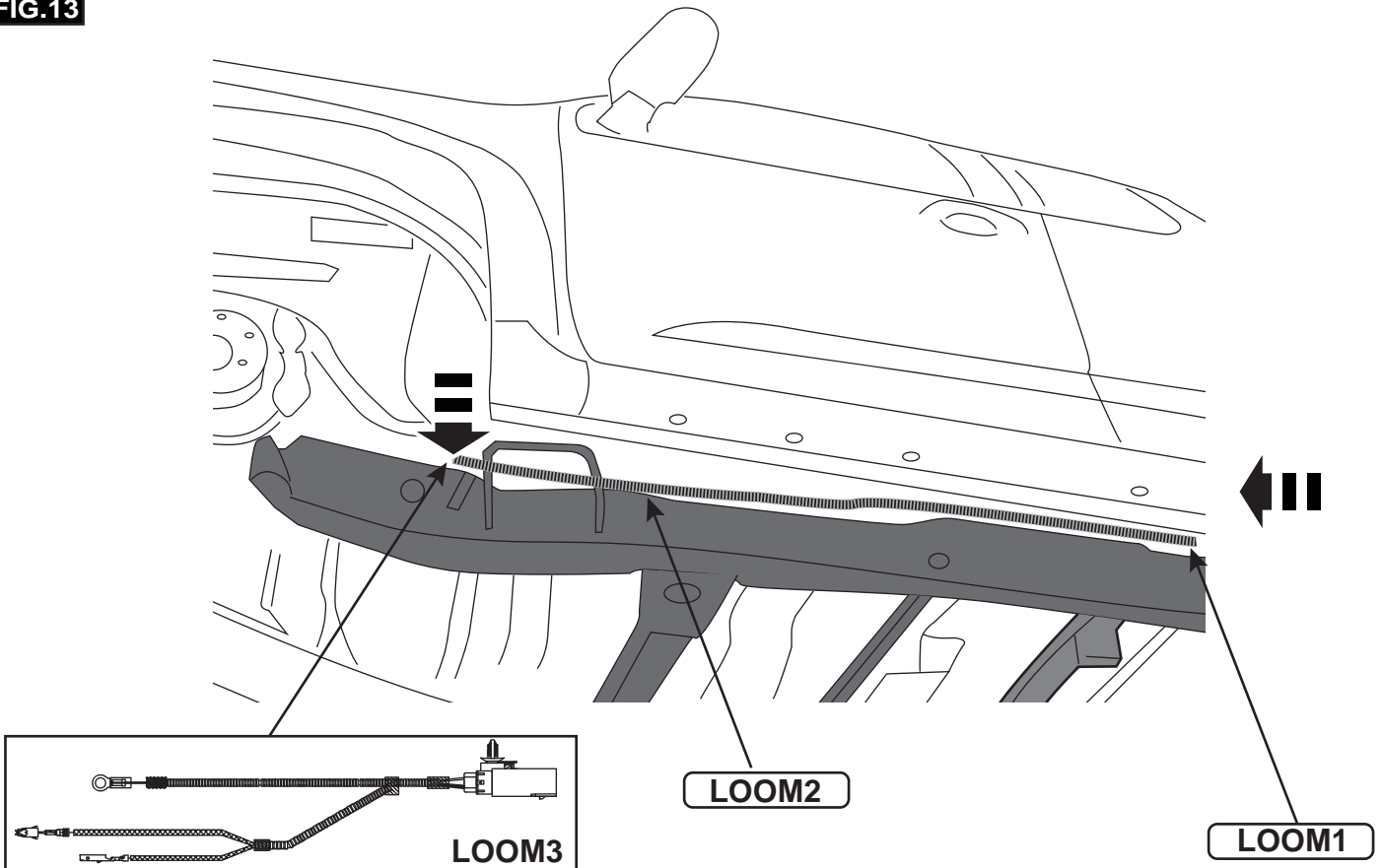
Align the joiner and tighten up the bolts which connect the front tube to the rear legs to a torque of 5Nm and insert a grommet (11) into the hole in the tube. Repeat for the opposite side.

FIG.12



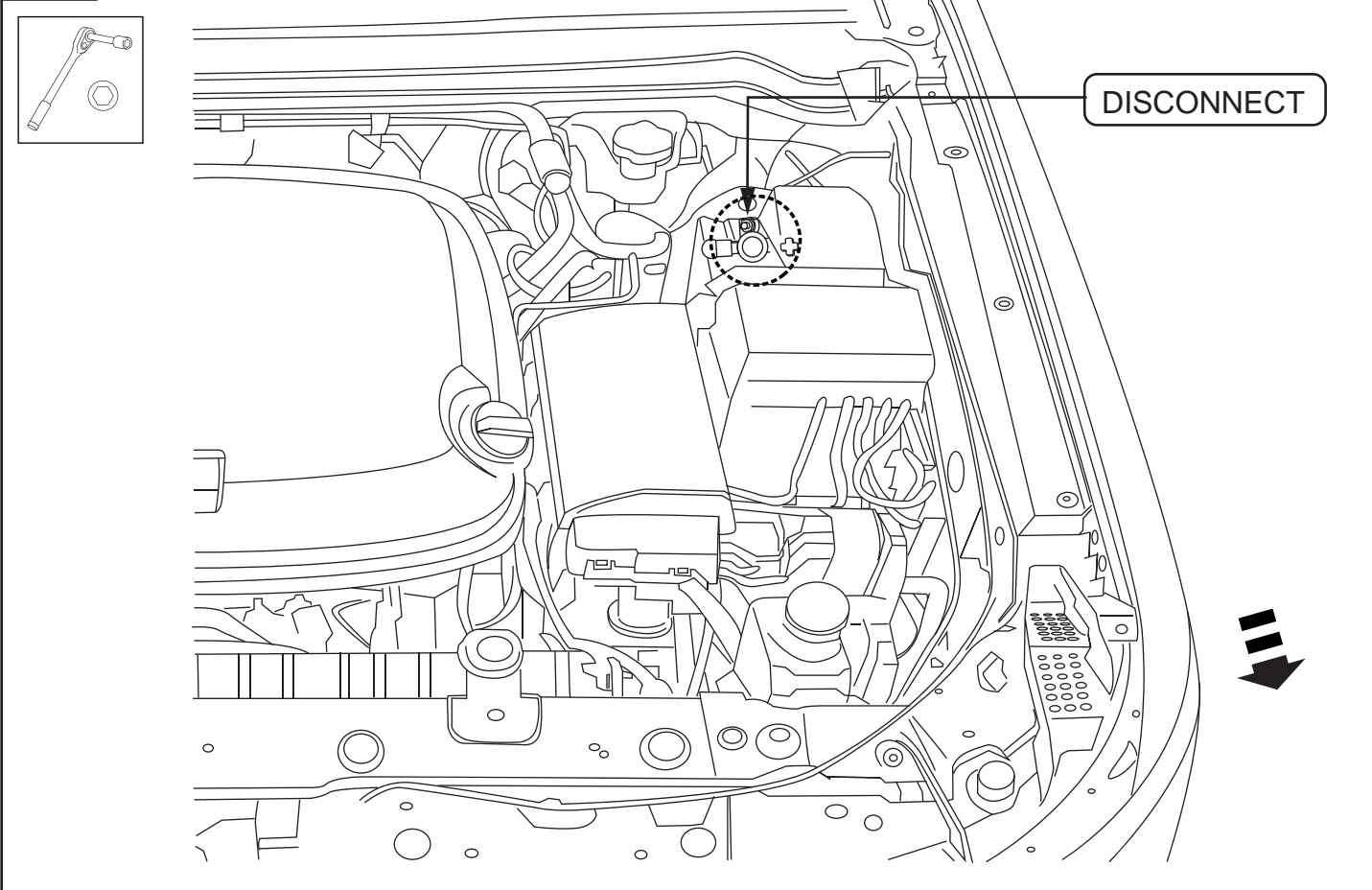
SBAR loom should drop under the vehicle behind the tub body work as shown. Underneath the vehicle connect LOOM1(17) with LOOM2 (18).

FIG.13



Route the loom 1 & 2 along the outboard side of the frame rail. Secure the loom using tags. Connect the loom 3 and loom 2.

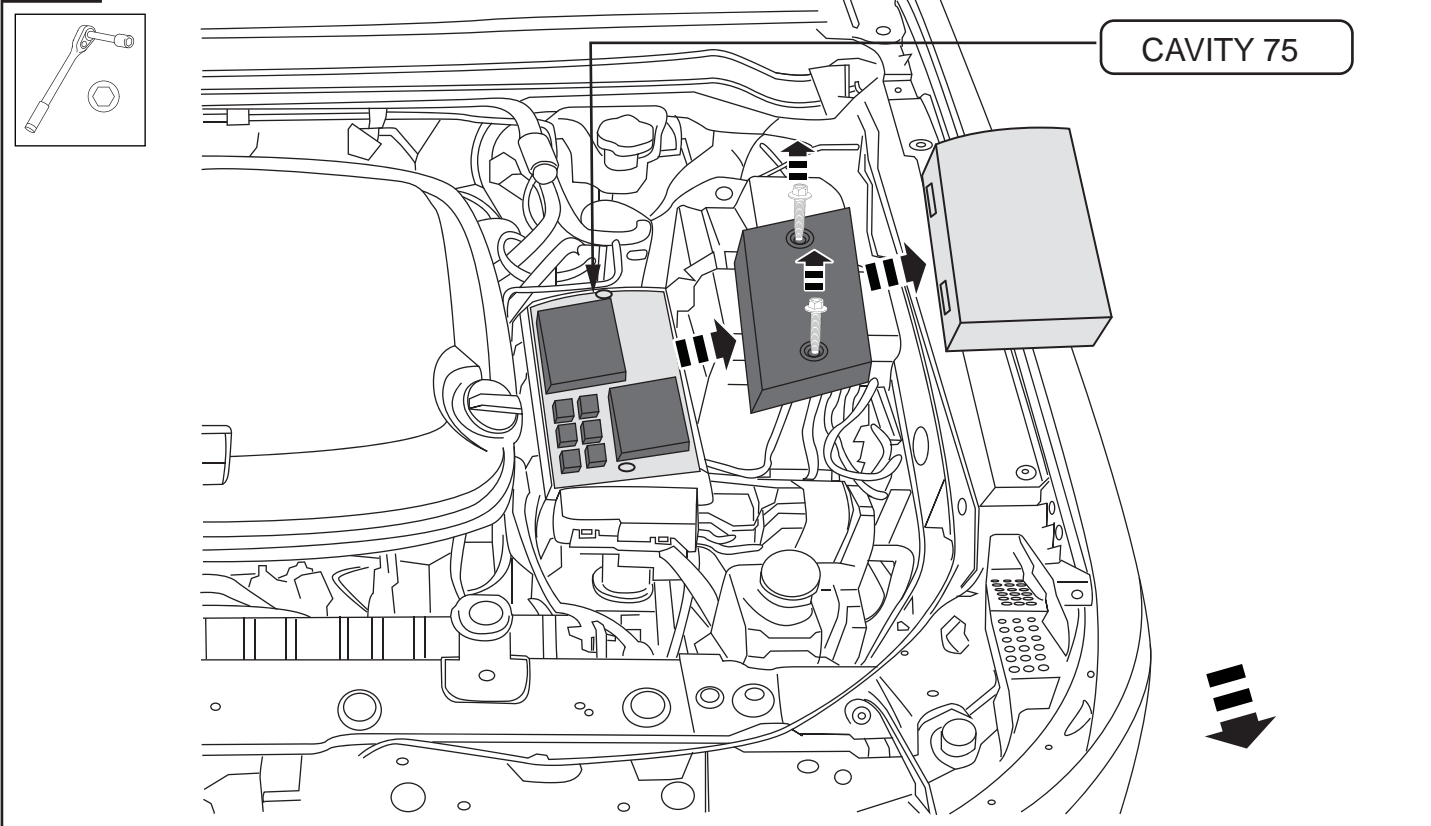
FIG.14



Remove the battery junction box lid.

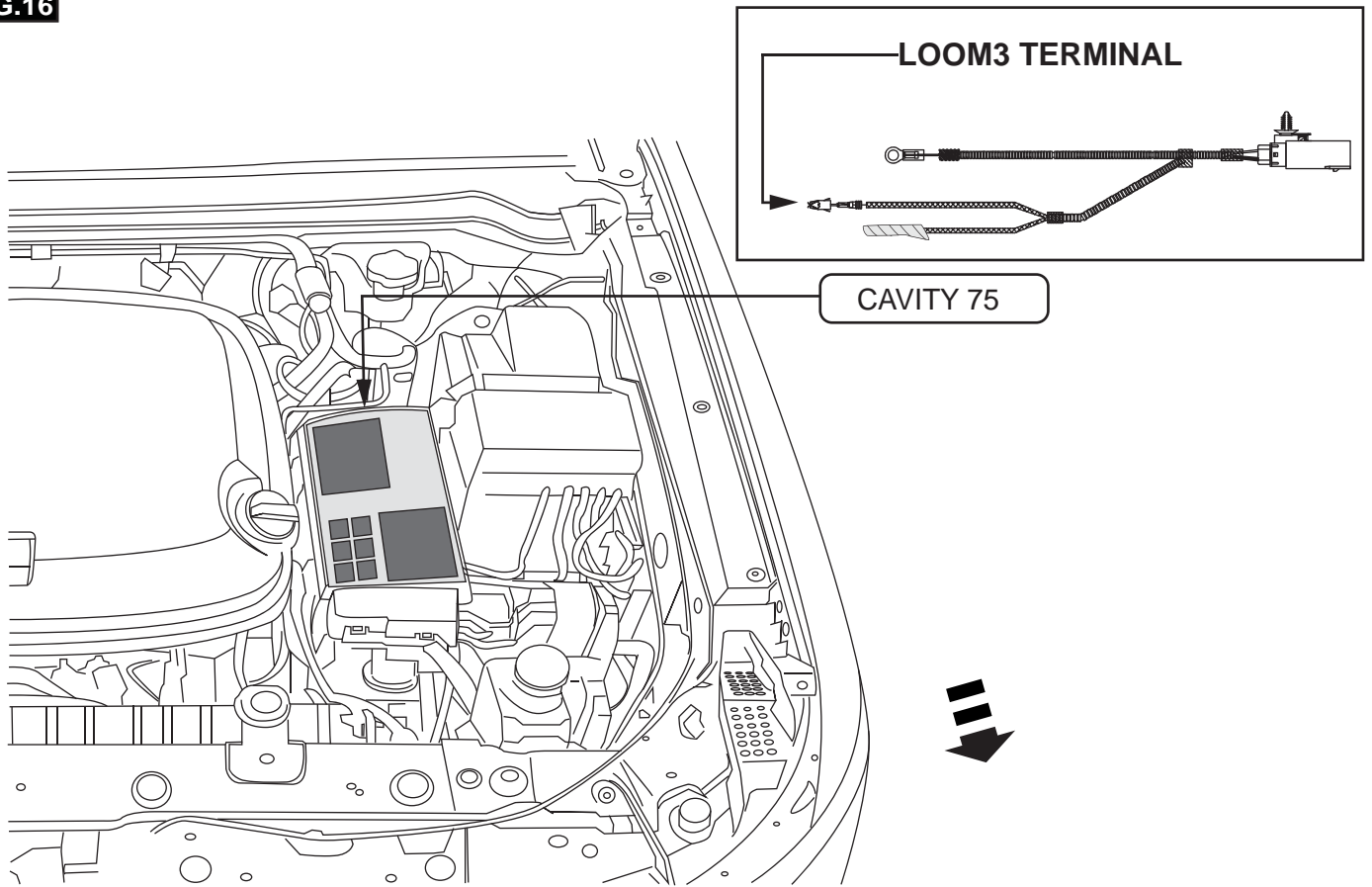
Note: The wires from the battery need to be disconnected during these operations.

FIG.15



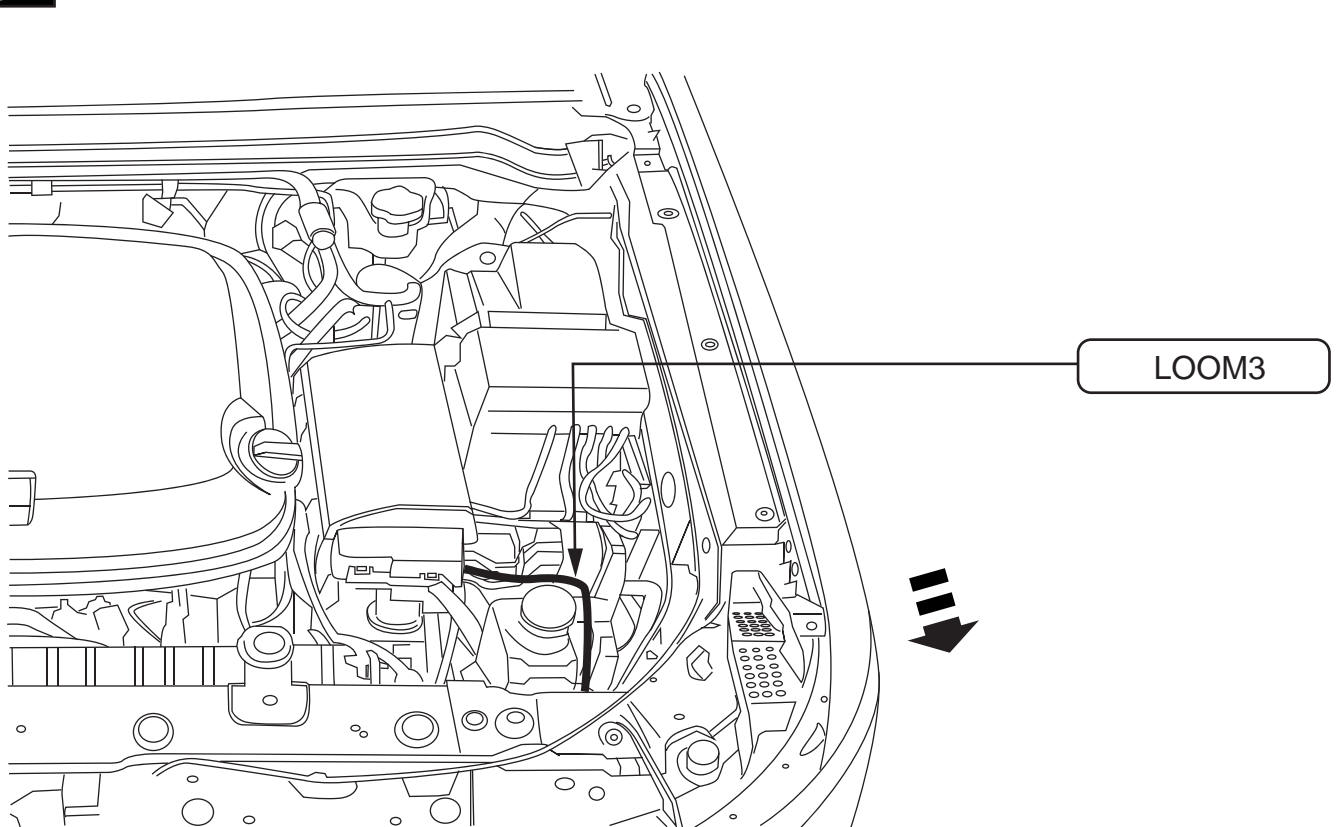
Remove the top cover of the UEC. Remove the two bolts holding the top fuse board and remove the board, exposing the large connectors below. Locate the CHMSL circuit (VT/GY) in cavity 75 of connector X. Remove the terminal from cavity 75 and cover with vinyl tape.

FIG.16



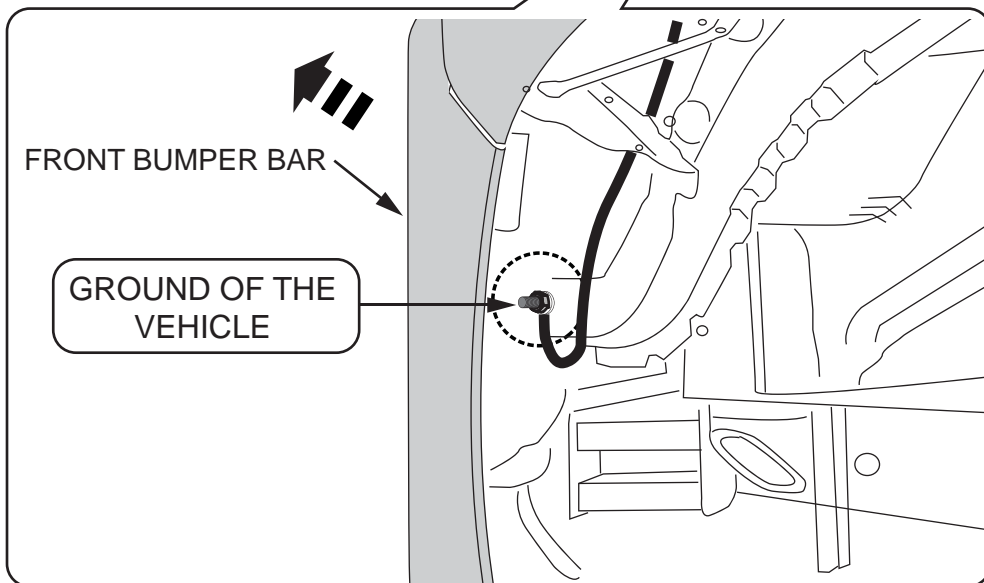
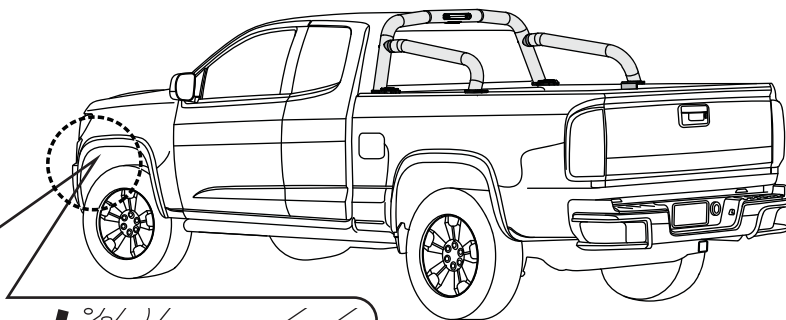
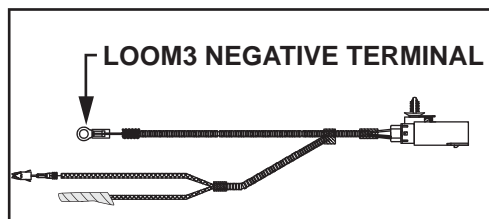
Locate the cavity 75 and connect the 2.8mm terminal on the longer wire of LOOM3 into the empty cavity. Fold and tape the shorter terminal as it is not used.

FIG.17



Remove the left front tire and wheel house splash shield to access the ground location. Refer to Vehicle Service Manual. Route harness with ground eyelet downward to the left front wheel house area.

FIG.18



The ground eyelet will attach to the ground just forward of the left front wheel.
Remove the existing ground bolt, stack the new eyelet and replace the ground bolt, tighten the bolt to 23 N.m (17 lb ft).