



BUNDUTOP

MANUAL

The **BUNDUTOP**

The BunduTop standard size is 82.6 x 53.1 x 11.8 in when closed, and 82.6 x 53.1 x 40.5 in when open.

PLEASE NOTE you can order a custom sized BunduTop up to 5.2ft wide and 9.8ft long.

The tent weighs about 176.3lb.

The tent boasts entry from any side, giving you 360 access and view. Each window/door is manufactured with the canvas on the outside and the mesh on the inside. This allows you to leave the windows open for ventilation, even in poor weather conditions

The BunduTop comes standard with an aluminium sliding ladder and 2 pockets inside to put keys, cellphones etc. and has a cigarette lighter plug and an LED light inside.

The roof of the BunduTop is a raw aluminium sheet to ensure maximum heat reflection and is the main reason you can sleep comfortably cool inside, even in direct sunlight.

The roof weighs 44.1lb and can carry additional weight of 55.1lb, if evenly spread.

You are welcome to install a solar panel on top. We now include solar wiring and it simplifies the installation of a solar panel by allowing the wiring to go unseen through the tent.

The 2000lbs winch motor lifts and lowers the tent with the use of 0.1in Dyneema rope on a pulley system.

The foam backed roof-lining absorbs moisture and condensation, but if you are going to extremely cold areas we do recommend putting a carpet under the mattress as insulation, as very cold temperatures creates additional condensation.

The frame built into the bottom of the tent provides additional strength and makes it versatile to mount. It can be bolted directly to your load bars or roof rack.

The mattress inside is 78.7 x 49.2 x 3.93 in and is made from a high density foam. A double bed fitted sheet fits it just fine. This leaves enough space inside the tent so that you can leave your bedding inside.

Kindly arrange your bedding so that it can't hook into the rope system inside; flattened bedding won't interfere.

Please ensure you leave some windows open or close only the mosquito net so that trapped air can escape. Trapped air will push out the canvas sides and cause it to not fold in properly when lowering the tent.

When entering or exiting the tent, ensure that the zips are completely zipped down as the zips/ mosquito net isn't designed to carry weight.

The tent has been tested extensively in various locations and weather types. In the USA it has proven to withstand 50 mph winds and has also performed well in snow.



DO NOT OPEN THE TENT WHILE THE LATCHES ARE STILL CLOSED AS THIS WILL DAMAGE THE TENT.

In locations with extreme humidity and heat, the combination can cause extreme condensation inside the tent. This will be UNDERNEATH the mattress. If you are experiencing similar conditions, try to ventilate the tent to prevent the condensation.

PLEASE NOTE that when using it for the first time please note that the canvas can be stiff. It gets coated with various resins to ensure its longevity and UV qualities, so when first operating the canvas has no “memory” of how to fold. After a couple of uses the canvas will evolve a “memory” of how to fold and the folding will become neater and easier as time passes. The initial folding process will seem stiff but with time it will ease into its shape and fold neatly.

INCLUDES

It boasts:

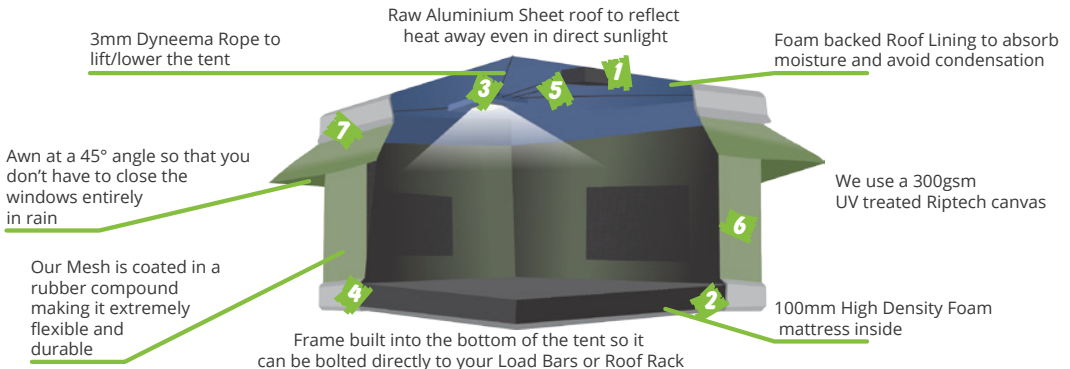
- Full electric operation
- Shade awning around all four sides of the tent
- Tent fully erect, with awnings, in 30 seconds at the press of a button.
- Tent fully closed, all sides & awnings folded away in 30 seconds at the press of a button
- 82.6 x 53.1 x 11.8 in closed & 82.6 x 53.1 x 40.5 in opened
- Window covers zip open/closed from the inside
- Insulated roof inside
- All aluminium construction
- Stainless steel supports:
 - The tent has an existing aluminium frame built into the bottom.
 - If replaced with stainless steel the frame can accommodate an overhang of up to 19.6in.

Includes:

- 3.93in high density foam mattress
- 12V outlet inside
- LED light inside
- All aluminium construction ladder

Solar Wiring:

- Since 2017 we incorporated solar wiring as a fixture with every BunduTop.
- The wiring for the solar wiring runs underneath the roof-lining.
- There will be a red Brad Harrison plug on the roof of the tent for easy connection to your solar panel.
- There will be a red Brad Harrison plug on the bottom of the tent for easy access to your vehicle's wiring.
- Please remember when mounting a solar panel that the max weight is 55.1lb and the weight needs to be evenly spread – make sure the supports run the entire length of the roof.



1 2000lbs Winch Motor (or 907kgs)

2 Electronics Box
Cigarette lighter plug inside
(You can also add a USB port)

3 12V LED light in the roof
(You can also add 12V Fans)

4 Red Brad Anderson
Grey Brad Anderson
Manual Override

5 Limit Switch near winch

6 Limit Switch on arm

7 Red Brad Anderson

EXTRAS

- Added room
- USB port
 - If you prefer we can add a USB port to your rooftop tent.
 - It will be accessible from inside.
- 12V fan
 - As an additional extra you can add 12V fans.
 - They can be switched on and off with their own individual switches from inside the tent. The wiring for the fans also run underneath the roof-lining.

PROS & CONS

Pros:

- Lifts or lowers at the touch of a button
- Leave bedding inside
- Rigged for solar panels
- Has an LED light and cigarette lighter plug inside
- Comes with our all new double sided ladder – you can specify round or square
- Weighs approx. 176.3lb

Cons:

- Takes up a lot of roofrack space

HOW DOES IT WORK?

The tent has a winch inside that lifts and lowers it. It is connected to ropes that run on bearings to effectively pull in the awnings and sides. The rope system inside is essentially dyneema plasma rope snaked through various pulleys and arms, as well as the mechanisms for the awning to pull in the sides and awnings when the tent is shut.

The arms and their unique design again assist with the lifting of the tent and ensures that it is rigid when open, essentially strengthening the construction.

Unclip ALL FOUR latches and ensure that they are open before pressing the button to lift the tent. There is a safety feature (limit switch) that assists with telling the motor when to STOP while lifting/lowering the tent. YOU, however, are responsible for telling the tent when to START, so kindly ensure all the latches have been opened.

Should you forget to unclip one of the latches the arm inside will bend. It is also the only way to damage the tent from the inside. It is easy enough to fix but best avoided.

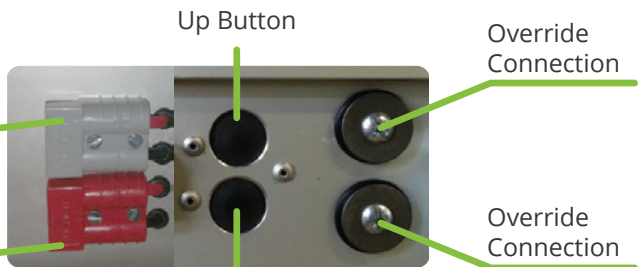
We will also be able to tell whether this was the cause, so better to be honest when taking it in for repairs!

OUR TENTS HAVE A ONE YEAR MECHANICAL WARRANTY.

OPERATING THE TENT

12v Power
Connects to
vehicle's dual
battery system.

Solar Wiring
Connects to
vehicle's regulator.



Down Button

THE ELECTRONICS

All the electronics used in the BunduTop can be found inside the Electronics Box which houses:

- The Switch
- The Manual Override
- 2 x Diodes
- 1 x Relay
- 1 x Lighter Socket

Should you experience any difficulties with your tent's wiring, this is where everything is located.

Electrical Override:

Up – Open

Positive top

Negative bottom

Down – Close

Negative top

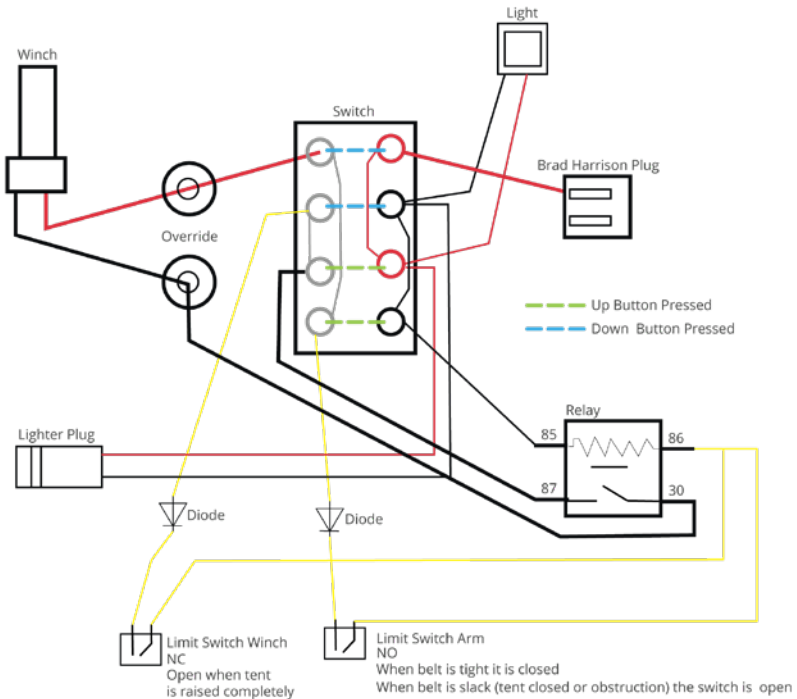
Positive bottom



COVERED: Location of electronics cover inside tent



UNCOVERED-Location of relay



ELECTRICAL FAULTS AND HOW TO PINPOINT THEM

Diode

If the light inside still works, but your tent won't lift or lower, it is most probably the diode. The diode blows when there is a short in your wiring system. The short is caused by the wiring touching the body.

The Limit Switches:

The Limit Switch located near the winch tells the tent when to stop lifting. The Limit Switch on the arm tells the tent when to stop lowering. **NEVER** adjust these switches unless instructed otherwise by a technician.

PLEASE NOTE that it is preferable to connect your tent to the secondary battery.

PLEASE NOTE that depending on what solar panel you have installed, you need to install a regulator that can handle VOLTS and WATTS. A lot of smart systems can handle 28V but not the 45V that a 300W Solar Panel produces.



Location of Limit Switch near the winch motor



Location of Limit Switch on the arm

HOW DO I FIT THE TENT MYSELF?

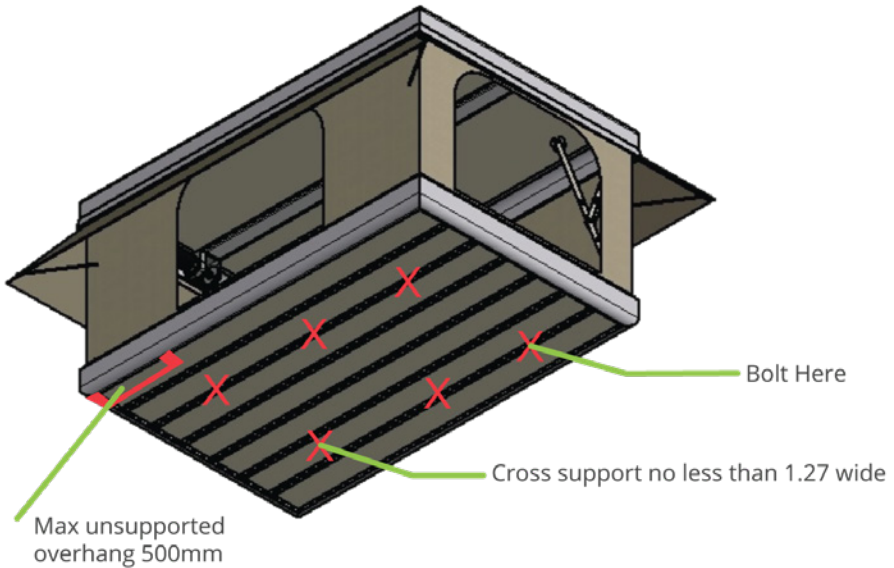
When installing the tent, we advise that there is no more than a 1.6ft unsupported overhang.

We also advise that the roofrack/load bars should be no less than 4.16ft wide.

If installing on load bars use three evenly spaced supports. The tent can be bolted on with a minimum of 4, preferably 6 bolts and you can run wiring from the dual battery system with a Brad Harrison plug through the vehicle or make an extension.

NO LIMIT SWITCHES WORK WHEN YOU OVERRIDE THE TENT MANUALLY. BE CAREFUL TO STOP THE LIFTING/LOWERING IN TIME.

BOTTOM FRONT VIEW



UNDERSIDE OF TENT

If you are doing the wiring from your battery directly to the tent:

- Use a Brad Harrison plug
- Use 0.23in 2 electrical wire
- Use 15 Amp inline fuse – this will help prevent damage if you forget to open the latches.
- Make sure to connect positive and negative correctly.

PLEASE NOTE that a larger fuse is not a good idea. The purpose of the inline fuse is to blow when the tent pulls too many amps.

This means that if you accidentally left a latch on, the tent's motor will work harder to lift the roof, thus pulling more amps and therefore blowing the fuse.

After the fuse blows the tent will come to a standstill and thus safeguard against bending the arms or snapping the ropes inside.

Quick Tip:

Some Dual Battery systems already installed may have a low amp rating. When lifting the tent the system detects a high amp on the load output leading to the tent and cuts off the power. If connecting to these type of systems please make sure that the output can accommodate the amps required by the tent.

PLEASE NOTE that if opening the tent for the first time for installation and the wiring is not made up yet, use the electric override option to open tent and be careful to not over tighten the tent.

If installing on load bars use three evenly spaced supports.

Remember to mount the ladder bracket:

After installing the tent mount the ladder bracket beneath the opening you will be using as the door. This way the ladder has a place to hook on to and will be less damaging than simply hooking the ladder onto the lip of the tent.

1. Hold the bracket in position on the side of the tent where you will be entering your tent.
2. Trace the outline.
3. Mark where you want to place your 3 bolts and drill the holes.
4. Hold the bracket in place again and mark the 3 holes you just drilled through the bracket onto the tent and drill them as well.
5. Line up the holes on the bracket to the ones on the tent and bolt through both.



After Fitment:

After installing the tent it is a good idea to check for symmetry when lifting/lowering.

You can fine-tune how evenly the roof lifts/lowers by adjusting the turnbuckles. If you screw them in the roof will lift, if you screw them out the roof will lower – you have about 1.9in to work with.

HOW TO INSTALL A SOLAR PANEL

PLEASE NOTE to be careful when drilling through to the inside of the tent as the drill bit might catch on the roof-lining and cause tears. Also ensure that the holes are properly sealed to insure that it is still dust/water tight.

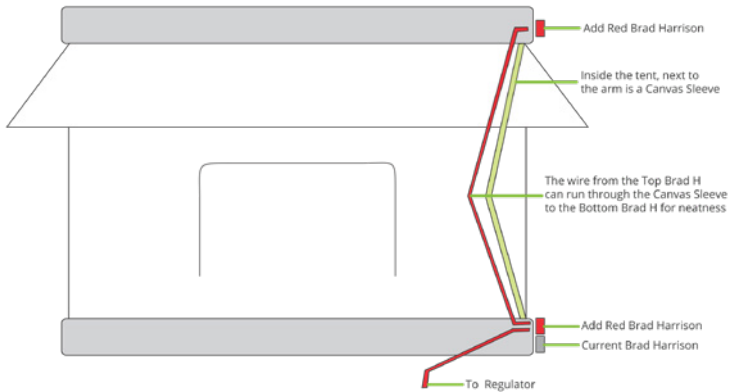
HOW TO ADD SOLAR WIRING AFTERWARDS

Add a Brad Harrison plug next to your current grey plug on the bottom frame. Add a Brad Harrison plug to the top frame. Connect the two with 0.23in wiring that can go through the inside of your BunduTop – ensure the length is long enough. To eaten the appearance, you can run it through the canvas sleeve next to the arm that already contains wiring.

PLEASE NOTE that since the end of 2017 all tents are manufactured with solar wiring so the above will only be applicable as an upgrade to older tents.

HOW TO ADD FANS AND LIGHTS AFTERWARDS

You can order the 12v Fans or LED lights from the factory to install afterwards. The frames they come in have a clear aluminium area that gets fastened to the interior roof of the tent. Firstly decide on placement and with a blade remove the roof-lining – this insures that when you drill the holes to rivet/bolt the fan/light to the roof the drill bit does not catch on the material and cause tears. Kindly use the wiring diagram as reference.



To hide wires you can run them underneath the CANVAS edging around the tent – merely lift this edging, run the wiring through and glue down neatly again (you can use the canvas sleeve in the arm to hide any additional wiring).

PLEASE NOTE that this can affect the warranty of the tent if not to professional standards.

MAINTENANCE

While unnecessary when not experiencing any faults, we do recommend maintenance in the older tents, as designs are upgraded continuously. This can be done by just replacing the ropes and re-aligning the roof.

How to replace the Ropes:

- Remove old ropes (remember to leave one arm as is as a reference when you do the new ropes).
- Turn the turnbuckles so that they are halfway in and halfway out (about mid way).
- Roll the belt onto the barrel until about only 3.93in is left.
- Snake the rope through the 4 holes in the belt, the ropes have to go through the correct bearings in the roof.
- There are 4 bearings in the middle of the roof under the light cover, left bearing is for left far side, second to left bearing is for is left front and the other two mirror for the right.
- Snake the rope through the arm mechanism as per the copy you left intact.
- Tie the rope to the turnbuckle, preferably hang mans noose, otherwise just a proper knot.
- Begin at the belt and tighten the rope through its course, the roof of the tent will lift – just keep going until the canvas is nice and taught and tie the rope off at the belt. Repeat for each arm.
- You can fine-tune how evenly the roof lifts/lowers by adjusting the turnbuckles. If you screw them in, the roof will lift, if you screw them out the roof will lower – you have about 5cm to work with.
- If you need to lift/lower more for an even roof you need to adjust the rope at the belt area again.



REPAIRS

The only other faults we have experienced are the following:

1. Tent does not go up or down.
 - Check that the electric cord to the tent has power (if the light goes on inside the tent then there is power).
 - Check that the connectors are not corroded (if the connectors are corroded it will not allow enough current through to drive the winch).
 - Use the electric override if all else fails.
2. Tent opens but does not close.
 - Check the limit switch near the winch.

The arm on the limit switch might bend over time and not make contact. Bend the arm a little bit down so that the switch makes contact when the belt is tight. When the tent closes and the belt gets slack the switch will disconnect and stop the winch.
 - Use the electric override if all else fails.

The other main fault we have experienced is the customer accidentally forgetting to open the latches. The ropes should snap before any serious damage can be done, but we have had instances where the arms are bent. In this case you can either straighten out the arms after removing them or get replacements from the factory. You may have to replace the safety belt on the winch motor if the ropes damaged the edge of the belt.

If you are replacing the belt:

- Remove old belt and ropes (remember to leave one arm as is as a reference when you do the new ropes).
- Turn the turnbuckles so that they are halfway in and halfway out (about mid way).
- Drill out the 2 old rivets from the barrel of the winch.
- Paint adhesive glue on the 3.93in front section of the belt and paint adhesive glue on the barrel of the winch.
- Give a few minutes to air dry to ensure maximum stickiness, then re-rivet the belt to the winch.
- The belt has to go over the top of the barrel (between the winch and the tent's roof).
- Follow the rest of the instructions under "Maintenance".
- In some instances the diode may have been damaged – the tent will then neither lift nor lower. Just replace the diode situated in the electronics box and all should be well.



FAQ

What is it made from?

The tent is full aluminium construction and a durable Riptech canvas. The tent seals completely when closed and gives a full dust/water proof seal.

We use a 300gsm Riptech canvas that is UV resistant to prevent fading. The wrap-around awning is at a 45° angle so that you can have ventilation in poor weather with maximum water deflection. Our mesh is coated in a rubber compound making it extremely flexible and durable.

The roof of the BunduTop is raw aluminium sheet to ensure maximum heat reflection and is the main reason you can sleep comfortably cool inside even in direct sunlight.

The 2000lbs Winch Motor lifts and lowers the tent with the use of 0.1in Dyneema Rope on a pulley system.

The foam backed roof-lining absorbs moisture and condensation but if you are going to extremely cold areas we do recommend putting a carpet as insulation under the mattress as very cold temperatures creates additional condensation.

The frame built into the bottom of the tent provides additional strength and makes it versatile to mount. It can be bolted directly to your load bars or roof rack.

Quick Tip:

Taking care of your canvas is easy! Take a look at the tab stitched inside for instructions on how to properly care for your canvas.

Can I fit the tent myself?

Yes. It is not heavy, but it is an awkward shape and will need 2 people to handle.

What if it doesn't work?

Should you for some reason experience electrical failure the tent will be the least of your worries. (Those beers will be getting warm!)

Even so the tent has a manual override outside, situated right next to the buttons used to lift/lower the tent.

Electricity in the form of a jumper cable connection can be used to lift/lower the tent this way.

PLEASE NOTE THAT WHEN YOU USE THE OVERRIDE IT BYPASSES ALL THE SAFETY MEASURES WE HAVE BUILT IN.

This means that your tent WILL NOT KNOW WHEN TO STOP.

You HAVE to stop it lifting by removing the electrical flow as soon as the canvas is taut.

The same will apply when you lower it this way. When the tent is about 0.39in from being completely shut, remove the electrical flow.

You can simply pull down the roof the last centimeter and fasten the latches.

What if I accidentally broke it by forgetting one of my latches on?

It will still work.

The roof of the tent (which weighs +/- 44.09lb) can be easily lifted by one person, who can crawl inside and wedge the corner arms in place. You may need a cable tie to tie them into that position. When you lower it the next morning gravity will step in and lower it for you and the sides and awnings will still pull in.

The holes in my tent doesn't have eyelets in them.

The eyelets don't wear well. The holes are actually burned into the canvas, because it's the strongest way to make the holes. While eyelets make for a better finish, it does not make for a stronger one, and our research suggests that eyelets pose as a weak point and is generally where tears can originate.

This is caused by the crimping tool used to install the eyelet, causing it's metal edges to essentially cut into the material it's being installed in, weakening the material on those points.

There are patches on my tent.

This is simply a strengthening patch placed to ensure that your canvas is enforced on places that take more strain.

Can I add extras?

Apart from Fans, Solar Wiring, replacing your Cigarette Lighter Plug for a USB Plug and Stainless Steel supports, there aren't any extras necessary.

If I put a thicker rope inside will I be able to lift heavier things on the roof?

No. It is designed to cater for solar panels only.

Can you provide me with a thicker mattress?

Unfortunately, we don't carry various stock, but if you would prefer a different mattress let us know when ordering and we will exclude the mattress - that way you can source another mattress better suited to your needs.

Can I add extra lights inside?

You can add additional lights inside the tent when you place your order. Adding them at a later date will result in damaged roof-lining inside your tent.

Also note that the light situated inside is bright enough to read by and no additional lighting is necessary.

Can I add fans inside?

You can add fans inside the tent when you place your order. Adding them at a later date will result in damaged roof-lining inside your tent.

Also note that the tent was designed to reflect heat away and the big windows allow maximum airflow, therefore adding a fan is not necessary.

I don't like the color of the tent, can I order another color?

Unfortunately, we don't carry various stock. We have decided on manufacturing the tent in Olive Green and Sand only as most camping gear which utilizes canvas also comes in these colors.

This way the tent color will be the same as all the other canvas products you may already have.

Can I order a bigger size?

You can definitely order a larger sized tent!

Please note that this severely affects the price as we have special extrusions that make up the shell of the tent. One extrusion equals one standard tent.

When we make a larger tent we charge for an additional length of extrusion as there will be off cuts which can't be used again for another tent.

I don't want round rungs on my ladder.

We have recently upgraded our ladder design to feature a double-sided ladder design, which can be utilised either way. Should you require a rounder profile you can use it one way, and should you prefer a square profile you can use it the other way.

All our rungs feature grooves as an added anti slipping measure.

If you would prefer a different ladder, kindly let us know when placing your order and we will exclude the ladder - that way you can source another one better suited to your needs.

Will the shape of the tent affect my fuel consumption?

If it does, it is indiscernible. We have not noticed any increase in fuel consumption over various vehicle types.



CONTACT US



By phoning the office, Front Desk can follow up on all calls and make sure they are attended to.

SOUTH AFRICA

BunduTec

Front Desk

Tel: +27 6 3782 7667

Email: info@bundutec.co.za

AUSTRALIA

Bundutec Australia

Tel: +61 414 500 430

Email: sales@bundutec.com.au

UNITED ARAB EMIRATES

The Great White

Tel: +97 15 0350 2735

Email: hello@tgw.ae | mksbusinesswork@gmail.com

EUROPE & UNITED KINGDOM

Tuff-Trek Ltd

Tel: +44 078 6329 5172

Email: dara@tuff-trek.com

KENYA

Alan Brooks

Tel: +25 47 4363 4921

Email: brooks.nairobi@gmail.com

NAMIBIA

Offroad Center Windhoek

Tel: +26 4 6123 7532

Email: offroad@afol.com.na

Bushwhackers Campworld Swakopmund

Tel: +26 4 6440 0396

Email: swakop@nambush.com

Bushwhackers Windhoek

Tel: +26 46 125 8760

Email: simon@nambush.com

UNITED STATES OF AMERICA

BundutecUSA,

Email: rory@bundutecusa.com

Tel: +1 319-234-0071