

Installation Instructions

Front and Rear Bolt-On Look Fender Flares

TOYOTA TACOMA (16-22)

FF1014

(Fits with or without factory installed Fender Flares, but without factory Mud Guards)

Important: Please read instructions entirely before installing this product.

Hardware Included	QTY
Alcohol Towelette	4

Hardware Included	QTY
"X" stamped Short Clip	4
Hooked end Short Clip	2
Hooked end Long Clip	2

Bolt Kit Included	QTY
Extruded Plastic Bolts	34

Ensure that both left and right hand front Fender Flares suit the profile of the vehicle. Note the areas where the Fender Flares come in contact with the vehicle. NOTE: Before fitting Fender Flares remove any moldings, strips or existing flares from the wheel arch. If there is a body side molding, mark where the molding is to be cut, alternatively the Fender Flare can be cut to go around the molding. Be sure to allow enough room for the extrusion. **No drilling of vehicle is required for Bolt-On Look Fender Flares. This is a non-drill product.**

***PRIOR TO ANY PAINTING & INSTALLATION, PRODUCT SHOULD BE THOROUGHLY INSPECTED FOR ALL COMPONENTS LISTED ABOVE. PRODUCT SHOULD ALSO BE TEST FITTED PRIOR TO ANY PAINTING & INSTALLATION. PLEASE CONTACT EGR IF YOU HAVE ANY FITMENT QUESTIONS AND OR MISSING COMPONENTS.**

PAINTING INSTRUCTIONS – If Fender Flares are being painted; do not install edge extrusion until painting is complete. Prior to painting, clean all surfaces to be painted using clean water and a mild detergent, do not use lacquer thinner or any solvent based products. Wipe completely dry. Best results will be achieved by wiping the areas to be painted with a tack rag just prior to painting. Most automotive paints can be applied directly to the Fender Flares, however some may require a primer (check paint manufacturer specifications). Good adhesion will be achieved without sanding. Select a paint (and primer if necessary) that is suitable for rigid plastics PMMA (Acrylic). If using a paint system that requires baking, do not expose the product to temperatures above 70°C (158°F). Do not fit the extrusion or any of the hardware to the Fender Flares until the paint is completely dry.



STEP 1: Attach the extruded plastic bolts. Peel back white tape liner from the bottom side of the extruded plastic bolt and press until it snaps into place. Ensure inside of Fender Flares where the rubber seal is attached is clean, using the alcohol wipes provided. Wipe away any residue with a dry clean cloth.



STEP 2: Attach the included rubber seal to the Fender Flares. Peel back 2" of the adhesive backing and position on the Fender Flare. Attach the seal to the Fender Flare, peeling back a few inches at a time. Ensure pressure is used to secure rubber seal to Fender Flare edge. Attach rubber seal along the top leading edge of the Fender Flare where it will make contact with the vehicle body.

Installation Instructions

Front and Rear Bolt-On Look Fender Flares

TOYOTA TACOMA (16-22)

FF1014

(Fits with or without factory installed Fender Flares, but without factory Mud Guards)



STEP 3: Trim rubber seal at end of each Fender Flare. Save extra rubber seal for install on opposite side Fender Flare and discard any excess once both sides are complete.

IMPORTANT NOTE: Trim rubber seal.



IMPORTANT NOTE: For rear area of rear Fender Flare. Trim rubber seal to initial contact edge of protective plastic stone guard / wind splitter attached to vehicle. **DO NOT** install rubber trim past this detail area. (Refer to above image)

FRONT FENDER FLARE INSTALLATION



STEP 1: Clean the vehicle body areas with a mild soap and water solution, where the Fender Flares will make contact. Ensure fenders are dry prior to install.



STEP 2: Hold Fender Flare on the vehicle in the position of best fit. For models **with** factory installed Fender Flares, note where above marked holes in Fender Flare align with existing screws in the vehicle. Make special note of "A". Remove the EGR Fender Flare and remove the (5) above indicated screws from the factory flare with a 10mm socket. **DO NOT** remove the factory flare, the EGR Fender Flare installs directly over the factory flare.

Installation Instructions

Front and Rear Bolt-On Look Fender Flares

TOYOTA TACOMA (16-22)

FF1014

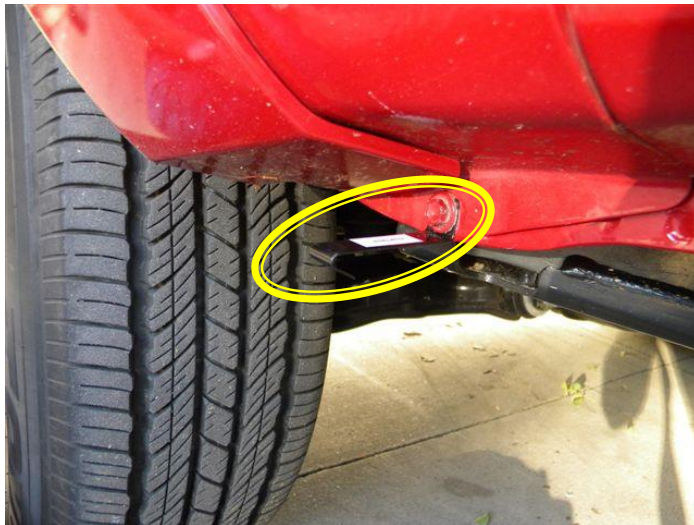
(Fits with or without factory installed Fender Flares, but without factory Mud Guards)



STEP 3: For models without factory installed Fender Flares, remove the (5) above indicated screws from the wheel liner with a 10mm socket and retain for later re-installation.



STEP 4: Again using a 10mm socket, remove the screw from the body sheet metal joint referenced in STEP 5 as Special Note area "A" and retain for later re-installation.



STEP 5: Remove Hooked end Long Clip from hardware kit and install in above shown orientation using the 10mm screw removed from the body sheet metal joint in STEP 8 as Special Note area "A". Fully tighten screw and ensure that finished position of clip is horizontal to ground, with the hook end pointing down.



STEP 6: Begin installation by engaging the hook end of the clip into the slot in the bottom of the Fender Flare and begin rotating the Fender Flare vertically up to its position of best fit.

Installation Instructions

Front and Rear Bolt-On Look Fender Flares

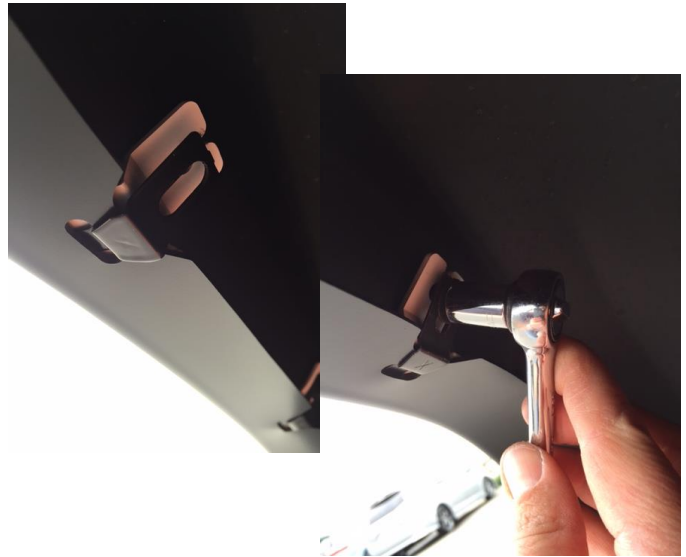
TOYOTA TACOMA (16-22)

FF1014

(Fits with or without factory installed Fender Flares, but without factory Mud Guards)



STEP 7: Ensure that the rubber seal is sitting flat against the painted vehicle surface, pay special attention to front area circled above. Using (3) previously removed 10mm screws from STEP 6 or 7, reinstall at above marked hole positions. Do not fully tighten screws at this stage.



STEP 8: At remaining (2) slot positions in Fender Flare. Remove "X" stamped Short Clips from hardware kit and install as shown above, using the remaining 10mm screws removed in STEP 6 or 7. Do not fully tighten screws at this stage.



STEP 9: If necessary, make minor adjustments to the flares position to achieve the best fit for your vehicle and to ensure that the rubber seal is sitting flat against the painted vehicle surface. When satisfied fully tighten all (5) screw locations, in the above order in which they were just installed. Repeat install for opposite side.

Installation Instructions

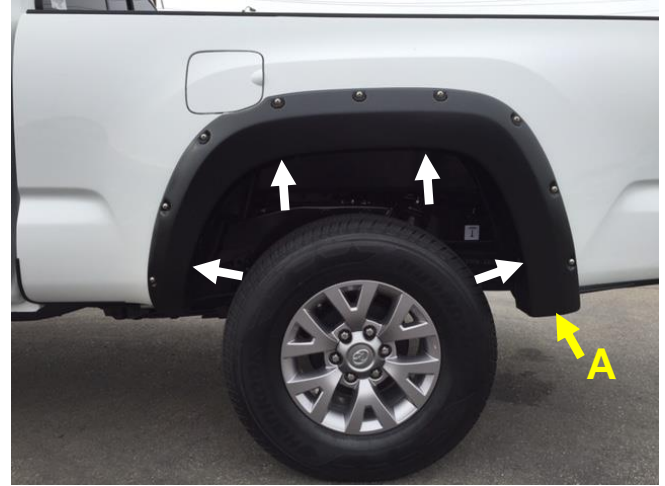
Front and Rear Bolt-On Look Fender Flares

TOYOTA TACOMA (16-22)

FF1014

(Fits with or without factory installed Fender Flares, but without factory Mud Guards)

REAR FENDER FLARE INSTALLATION



STEP 10: Clean the vehicle body areas with a mild soap and water solution, where the Fender Flares will make contact. Ensure fenders are dry prior to install.

STEP 11: Hold Fender Flare on vehicle in the position of best fit. For models **with** factory installed Fender Flares, note where above marked holes in Fender Flare align with existing screws in the vehicle. Make special note of "A". Remove the EGR Fender Flare and remove the (4) above indicated screws from the factory flare with a 10mm socket. **DO NOT** remove the factory flare, the EGR Fender Flare installs directly over the factory flare.



STEP 12: For models **without** factory installed Fender Flares, remove **only** the first (4) above indicated screws, from top to bottom of the fender, (2) each side, with a 10mm socket and retain for later re-installation.



STEP 12a: Remove **ONLY** these (4) above indicated screws as mentioned in previous STEP 15, with a 10mm socket for models **without** factory installed Fender Flares. Leave all other remaining screws in wheel liner area. EGR Fender Flare will install directly over the remaining screws.

Installation Instructions

Front and Rear Bolt-On Look Fender Flares

TOYOTA TACOMA (16-22)

FF1014

(Fits with or without factory installed Fender Flares, but without factory Mud Guards)



STEP 13: The protective plastic stone guard / wind splitter is different between with and without factory installed Fender Flare vehicles, it is necessary to hand file an additional approx. $\frac{1}{4}$ " out of the above indicated tip area of the Fender Flare cut-out to allow the Fender Flare to properly seat against the vehicle painted surface.



STEP 14: Re-Install Fender Flare in position of best fit, ensure that the rubber seal is sitting flat against the painted vehicle surface. Using (4) previously removed 10mm screws from STEP 14 or 15, reinstall at above mounting hole positions. Do not fully tighten screws at this stage.



STEP 15: Remove remaining Hooked end Short Clip from hardware kit. Remove 10mm screw from previously noted area "A" in STEP 14 that aligns with mounting slot in Fender Flare. Install hook end of short clip into Fender Flare as shown above and re-install 10mm screw.



STEP 16: If necessary, make minor adjustments to the flares position to achieve the best fit for your vehicle and to ensure that the rubber seal is sitting flat against the painted vehicle surface. When satisfied fully tighten all screw locations, in the above order in which they were just installed. Repeat install for opposite side.