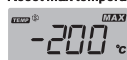


View max temperature



Reset max temperature

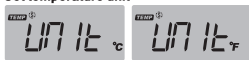


a) The temperature return to initial -20°C (-4°F) after setting.

View temperature unit



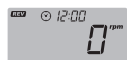
Set temperature unit



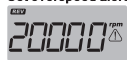
a) There are two optional temperature units "Cand F", the default setting is "C". Switch the temperature by short pressing **MENU** or **SET**.
b) Long press **MENU** + **SET** for 2S to save and exit setting mode.

2. RPM Interface operations

RPM main interface—Real time display current RPM



Set overspeed alert value



Overspeed alert value flash



a) Press **MENU** button to increase set value, press **SET** button to decrease set value. Short press once to change 100; Long p for 1S to change 3 times per second, a change 1000 per time, default value is 8
b) Setting range is 1000-25000. Long pr **MENU** + **SET** to save and exit setting mode.

View max RPM

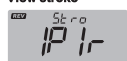


Clear the max RPM

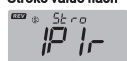


a) The max RPM return to initial 0.

View stroke



Stroke value flash



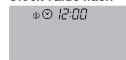
a) Switch stroke type by short pressing **MENU** or **SET**.
b) Long press **MENU** + **SET** to save and exit setting mode.
*Suitable for 9 types: 1P1R/2P1R/3P1R/4P1R/6P1R/8P1R/3P2R/5P2R/1P2R.

3. Clock setting

Any main interface



Clock value flash



a) Press **MENU** decrease set value, press **SET** to increase set value. Short press once to change 1; Long press for 1S to change 3 per second, and change 5 per time.
b) Switch the hour setting interface and minute setting interface by short pressing **MENU** + **SET**. Default is 12:00.

Notice: After connected the meter to external power, backlight will display as follows. When engine is working, backlight will be on automatically; when engine stops working for 10S, backlight will be off.

7 Relationship between stroke and cylinder in setting RPM mode

RPM Type	Ignition Method	Stroke and Cylinder	RPM Range
1P1R	1 spark per revolution	4 stroke 2 cylinder	0~25000
		2 stroke 1 cylinder	0~25000
2P1R	2 spark per revolution	4 stroke 4 cylinder	0~15000
		2 stroke 2 cylinder	0~15000
3P1R	3 spark per revolution	4 stroke 6 cylinder	0~10000
		2 stroke 3 cylinder	0~10000
4P1R	4 spark per revolution	4 stroke 8 cylinder	0~7500
6P1R	6 spark per revolution	4 stroke 12 cylinder	0~5000
8P1R	8 spark per revolution	4 stroke 16 cylinder	0~3750
3P2R	3 spark 2 revolution	4 stroke 3 cylinder	0~20000
5P2R	5 spark 2 revolution	4 stroke 5 cylinder	0~12000
1P2R	1 spark 2 revolution	4 stroke 1 cylinder	0~25000

Notice: A part of 4 stroke 1 cylinder engine is special. When 2P1R's data is incorrectly, please try to set 1P1R.

8 Specifications & Parameter

Product name	Multifunctional meter
Temperature measuring range	-20°C~300°C (-4°F~572°F)
Temperature measuring accuracy	±1%
Total hour range	0-99999H
Housing material	ABS
Waterproof level	IP65
Display mode	LCD
Display windows size(visible)	52X24mm
Product weight	216g
Dimension	79X41X21.6mm
Battery type	CR2450 Replaceable
External power voltage	12/24V

9 Trouble shooting

Problems	Possible reasons	Solutions
Display nothing	1. Battery empty. 2. Battery installed backwards.	1. Replace the battery. 2. Check the battery installation is correct.
Time no change or not accurate after 6 minutes or RPM is not accurate	1. Cable loose or wrapped less cycles. 2. Cable may be damaged. 3. Stroke type setting is incorrect.	1. Tighten or wrap more cycles. 2. Repair or change the cable. 3. Set the correct stroke.
Display no change	The meter is crash.	1. Re-install the battery.
LCD display ERR	1. Sensor is not connected. 2. Sensor is damaged. 3. Sensor type setting is incorrect.	1. Re-install the sensor. 2. Replace a new sensor. 3. Reset sensor type.
Unclear display on LCD or color changed	1. Wrong angle of the product. 2. Low battery.	1. Adjust the angle. 2. Replace the battery.

LATNEX® Canada-EMR Shielding Solutions Inc.

URL: www.latnex.com Email: info@latnex.com

Address: 399 Four Valley Drive Unit 13 Concord Ontario L4K 5Y8 Canada

Canada Tel: 416-583-2005

USA Tel: 310-746-3686