

Wallace Seymour

Fine Art Products

Vintage Watercolour

www.wallaceseymour.co.uk



Brilliant Yellow (A)



Lemon Yellow
(Nickel Titanate) (D)



Horton Lemon (A)



Cadmium Lemon
Yellow (C)



Cadmium Yellow (C)



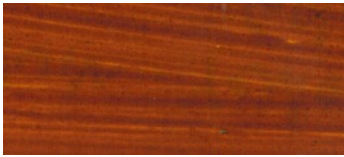
Chrome Yellow hue (B)



Cobalt Yellow (E)



Indian Yellow (C)



Quinacridone
Yellow-Gold (D)



Naples Yellow
Deep genuine (D)



Naples Yellow Hue (A)



Fauve Orange (A)



Cadmium Orange (C)



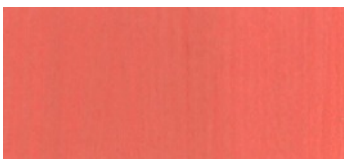
Horton Red (A)



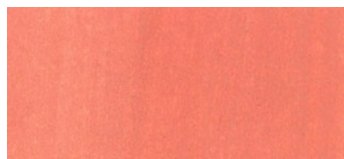
Cadmium Red (C)



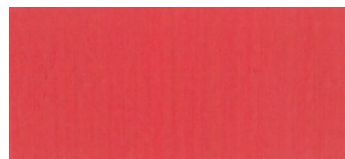
Greave's Red (A)



Vermilion genuine (E)



Cinnabar, Monte Amiata
genuine (E)



Cadmium Red Deep (C)



Rubies Pure
Mineral Colour (F)



Potters Pink (C)



Lacque de Garance,
Alizarin Crimson (C)



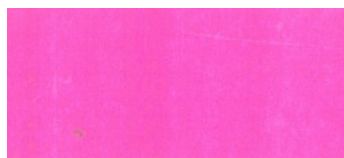
Venetian Rose (C)



Madder Lake genuine (D)



Velvet Rose (D)



Rosa Magenta (B)



Scala Pink (C)



Quinacridone Red
Gold (C)



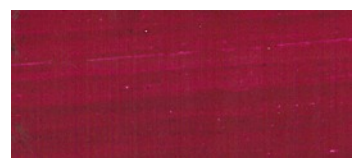
Cobalt Violet (D)



Ultramarine Violet (B)



Manganese Violet (C)



Thioindigo (C)



Horton Violet
(Dioxazine) (A)



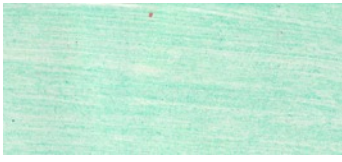
Blue John Pure
Mineral Colour (E)



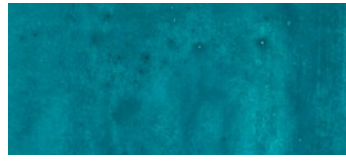
Cerulean Blue (C)



Manganese Blue hue (C)



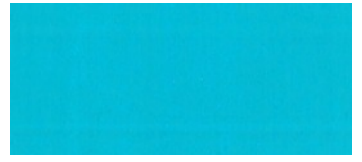
Turquoise Pure
Mineral Colour (E)



Dufy (C)



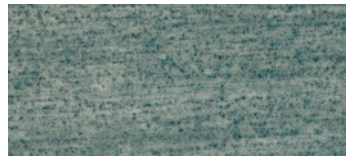
Tillyer Turquoise (D)



Cobalt Turquoise
Light genuine (C)



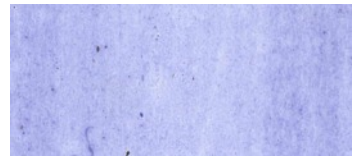
Ultramarine Blue
Deep (B)



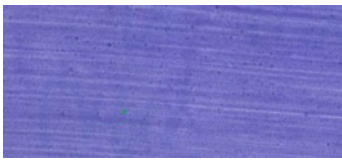
Azurite Pale Pure Mineral
Colour "Church Beck" (E)



Lapis Ashes (Ultramarine
Ashes) genuine (E)



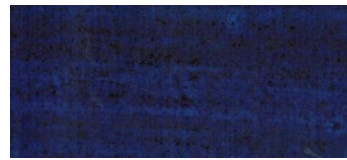
Lapis Lazuli genuine (F)



Lapis Lazuli - De Luxe
genuine (G)



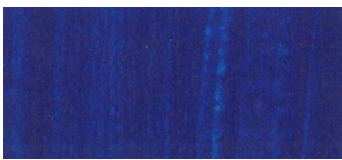
Indigo genuine (C)



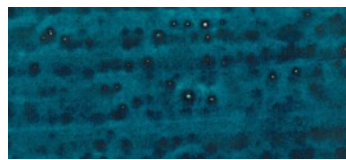
Indanthrene Blue (C)



Prussian Blue (A)



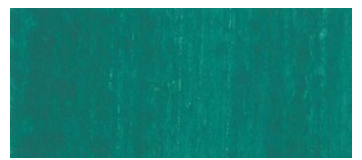
Horton Blue (A)



Bears Blue (C)



Permanent Green
Lightest (C)



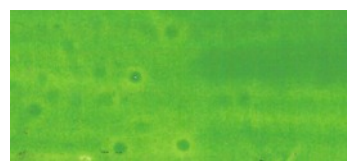
Viridian genuine (D)



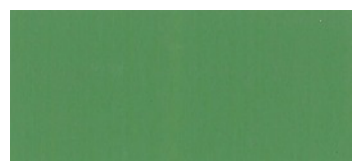
Malachite Pure Mineral
Colour "Church Beck" (E)



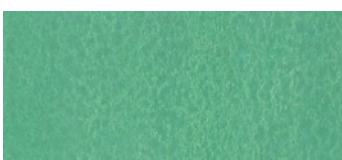
Vert Paolo Veronese (B)



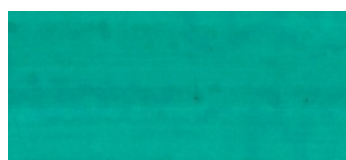
Primavera (Cadmium
Green Light) (C)



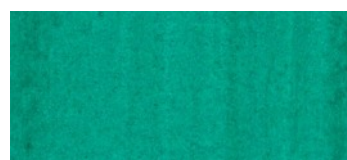
Chromium Oxide Green (B)



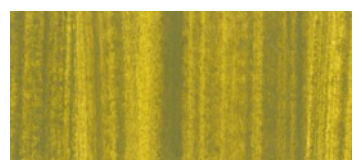
Cobalt Green (D)



Cobalt Green Blue
Oxide (D)



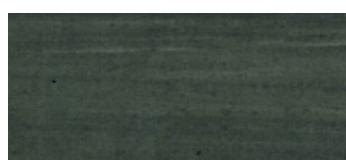
Horton Green (A)



Green Gold (C)



Permanent Sap Green (A)



Dought Green (C)



Lakeland Slate (B)



Oxford Bluestone -
Green Earth (B)



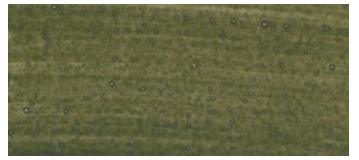
Honister Green Slate
Pale (C)



Ingleton Green Earth (C)



Terre Verte (A)



Verdaccio (B)



Cinabrese (B)



Raw Sienna, Bagnoli,
Monte Amiata (B)



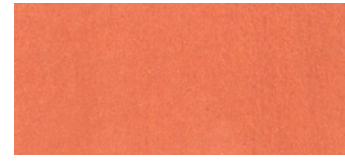
Yellow Ochre (A)



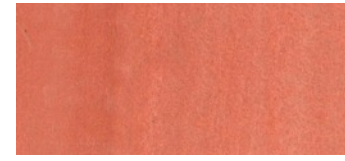
Puisaye Burgundy
Yellow Ochre (B)



Oxford Ochre (B)



Rosso Ercolano (A)



Venetian Red (A)



Borders Red (B)



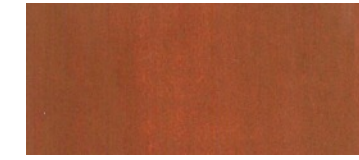
Torridon Sandstone (C)



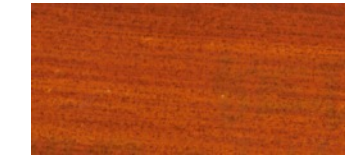
Terra Rosa 'La Vena'
Monte Amiata (C)



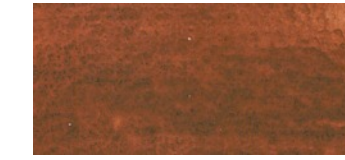
Moughton Whetstone (C)



Burnt Sienna, Bagnoli,
Monte Amiata (B)



Trans-Oxide Red (C)



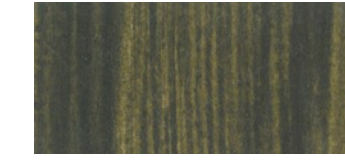
Rudstone, natural
iron-clay ochre (C)



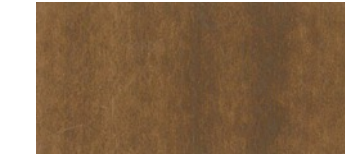
Morrelone, Caput
Mortuum Violet (B)



Indian red (A)



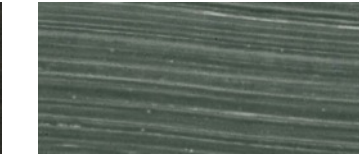
Raw Umber (A)



Burnt Umber (A)



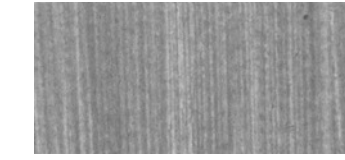
Burnt Umber Extra Dark (A)



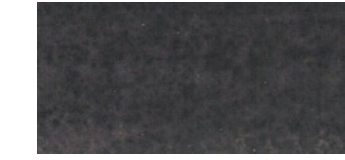
Sepia hue (A)



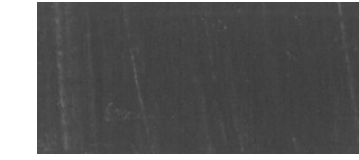
Citadella Grey Schist (C)



Davy's Grey, Oxford
Mudstone (B)



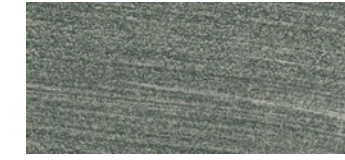
Iron Plum (C)



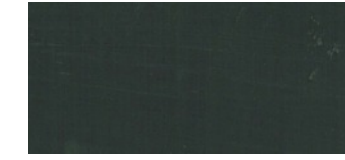
Paynes Grey (A)



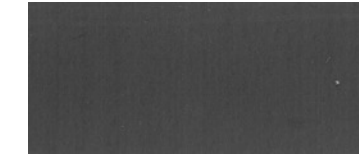
Paynes Grey Original (E)



Shimmer, Iron Glimmer (C)



Magnetite (C)



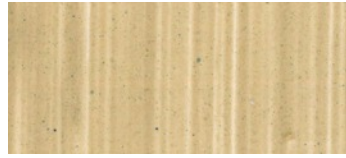
Neutral Tint (A)



Ivory Black (A)



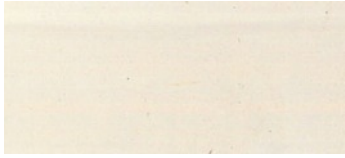
Lamp Black (A)



Terra Bianca (A)



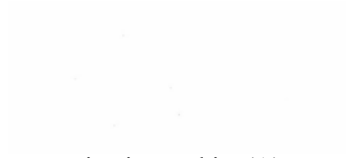
Buff Titanium (A)



Granulation White (A)



Chinese White (A)



Titanium White (A)