



Install Guide

Fits Twin Engine Yamaha Jet Boats 1996-2018

Included In This Kit:

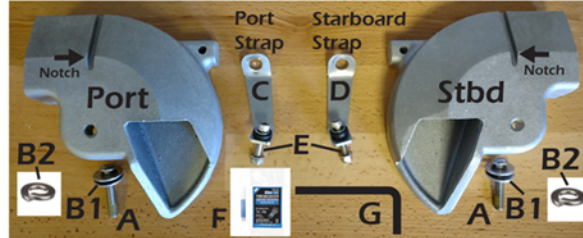
- 2 Lateral Thruster Units (1 Port/1 Stbd)
- 2 Stabilizer Straps
- 1 Hardware Kit

Tools Needed For Install:

- Ratchet
- 14mm Wrench & Socket
- 12mm /Socket
- 10mm Wrench

Hardware Kit Contents

- A: 2 Mount Bolts
- B1: 4 Fender Washers
- B2: 2 Lock Washers
- C: 1 Port Side Stabilizer Strap
- D: 1 Starboard Side Stabilizer Strap
- E: 2 Stabilizer Strap Hardware Assy
- F: 1 Blue Thread Locker
- G: 1 5mm Allen Wrench

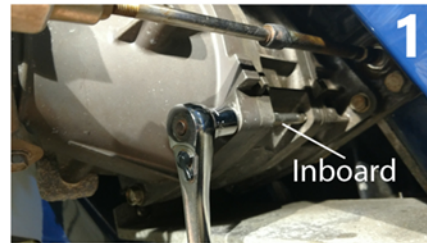


Port Side Installation

Prior to installation remove boat's safety lanyard & move throttle levers forward.

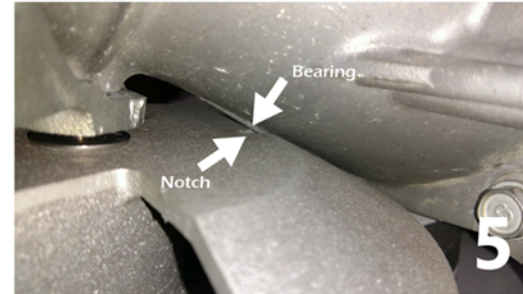
1. Remove lower inboard jet pump mount bolt with 14mm socket. Add port side stabilizer strap (C) as pictured (image 2) & apply liberal amounts of blue thread locker on the threads near the end of the bolt. Reinstall mount bolt but do not tighten all the way at this step. You'll tighten in step 5.

2. Remove lower mount bolt/washer/spacer from deflector nozzle. Keep spacer for reuse and set aside mount bolt & washer.



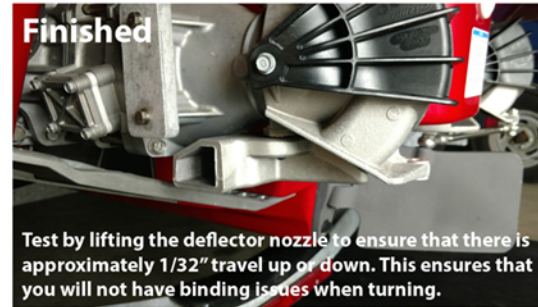
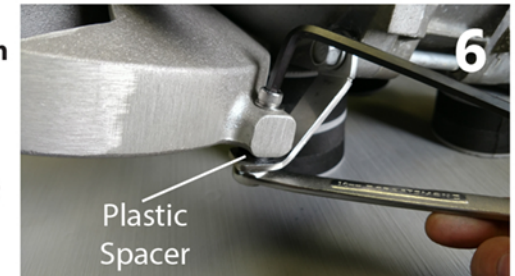
3. Add Lateral Thruster mount bolt & lock washer plus fender washer to underside of central mount point. Add second washer to top of central mount point followed by factory spacer from step 2 & liberal amount of locktite.

4. Align mount bolt under deflector nozzle lower pivot point and thread into jet pump (Pictured Image 4). Make sure that you align the notch on the leading edge of the lateral thruster unit with the bearing on the jet pump (image 5). Use caution while tightening this bolt to ensure that the factory spacer is not pinched between the washer & the deflector nozzle. Thread main mount bolt in and leave slightly loose at this step.



5. Add stabilizer strap mount bolt & washer (E) through topside of stabilizer strap mount point. Then install spacer (image 6) between mount point & stabilizer strap. Pass the strap mount bolt through the stabilizer strap and finally add washer and nylock nut.

Tighten the stabilizer strap mount bolt with 5mm allen wrench & 10mm wrench. Ensure you have at least 2 threads exposed. Now tighten the main mount bolt to approx 10 foot lbs torque. Do not over torque!! Last torque jet pump mount bolt. We do not have a torque value but try to



replicate the same torque that it took to remove the bolt when you began the installation.

This completes the installation on the port side nozzle. For the starboard side nozzle repeat these steps.

Disclaimer: Lateral Thrusters were designed to be compatible with Yamaha Jet Boats as they are shipped from the factory. Also Lateral Thrusters are compatible with Thrust Vector steering systems. They are not compatible with other steering systems on the market. JetBoatPilot will not be held liable for damage to or failure of any factory components in the event Lateral Thrusters are installed in conjunction with steering systems other than JetBoatPilot's Thrust Vector Slow Speed Steering System.

NOTE: IT IS CRITICAL THAT YOU APPLY A LIBERAL COAT OF BLUE LOCKTITE TO THE LOWER MOUNT BOLT PRIOR TO RE-INSTALLATION