

160

— YEARS OF —

Sanderson

INSPIRED BY NATURE SINCE 1860



A CELEBRATION OF THE
NATIONAL TRUST BY SANDERSON

DIGITAL DESIGN BOOK

DESIGNED IN
COLLABORATION WITH



National
Trust



A CELEBRATION OF THE NATIONAL TRUST BY SANDERSON

Fall in love with country house influences, swaying grasses, abundant blooms, the freshness of seas and the warmth of a walled garden. Watch as delicate bees and dainty butterflies meander alongside swooping birds, soaring majestically amidst the fabric of a warm summer sky.

With five captivating design themes exploring the National Trust's *raison d'être* and documents from the Sanderson archive, this collection's exquisite hand drawn designs, technique rich embroidery and textural weaves showcase the captivating beauty of our much-loved countryside.





BY APPOINTMENT TO HER MAJESTY QUEEN ELIZABETH II
SUPPLIERS OF WALLPAPER, PAINTS & FIBRES
ARTHUR SANDERSON AND SONS, ENGLAND

Sanderson

THE SECRET GARDEN

DESIGNED IN
COLLABORATION WITH



National
Trust

THE WALLEDGARDEN, HINTON AMPNER, HAMPSHIRE

Garden image: © National Trust Images/Chris Lacey



THE SECRET GARDEN

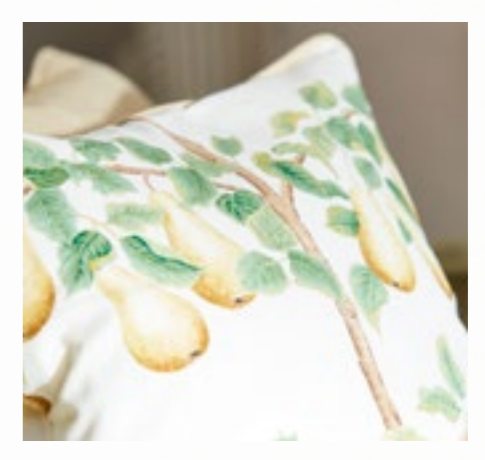
Intricate stitchwork and fine watercolours combine to create this elegant scheme that's influenced by the flowers and fruits found within the walled gardens of countryside estates.

Neutral tones and garden greens create a classic scheme, highlighted with Gold bursts reminiscent of late summer and the mineral contrasts of Steel Blue and Slate.





COUNTRY TONES
AND
ORCHARD FRUITS



ABOVE: CURTAIN Quercus 237190 CUSHIONS Quercus 237190, Perry Pears 226735, Orchard Tree Weave 237203, Orchard Tree 237184.
All other complementary fabrics and paints are from the Sanderson range.

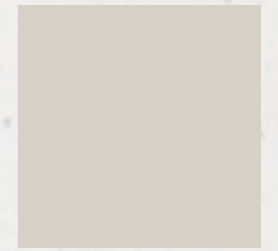
NATURAL INSPIRATION

STYLING TIPS



PAINT INSPIRATION

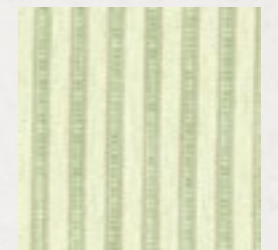
[CLICK TO VIEW ON WEBSITE](#)



NEW SILVER

WEAVE INSPIRATION

[CLICK TO VIEW ON WEBSITE](#)



MELFORD WEAVES



RUE LINEN



MELFORD WEAVES

A SIMPLE PALETTE



For a classic country look, keep the colour palette within the same hues, and add interest by using a striped fabric such as Melford on your sofa.



PERRY PEARS

Hand drawn in watercolour and beautifully detailed, espaliered pears reach across the branches of this English country garden favourite, printed in a choice of traditional or contemporary tones.



PERRY PEARS DNTF226735



PERRY PEARS DNTF226734

▶ [CLICK ON THE PRODUCT IMAGE TO VIEW ON WEBSITE & ORDER SAMPLES](#)



QUERCUS

This beautiful embroidery layers to create a canopy of acorns and leaves. A fine viscose thread adds a delicate shimmer to this accurate design, contrasting against a textural cotton base.



QUERCUS DNTF237190



QUERCUS DNTF237191

▶ [CLICK ON THE PRODUCT IMAGE TO VIEW ON WEBSITE & ORDER SAMPLES](#)



BELLIS

A modern, intricately embroidered floral design with an understated shimmer. Technique rich stitching adds depth and movement to this lovely, stylised design which is perfect for drapes.



BELLIS DNTF237114



BELLIS DNTF237115



BELLIS DNTF237116

▶ [CLICK ON THE PRODUCT IMAGE TO VIEW ON WEBSITE & ORDER SAMPLES](#)

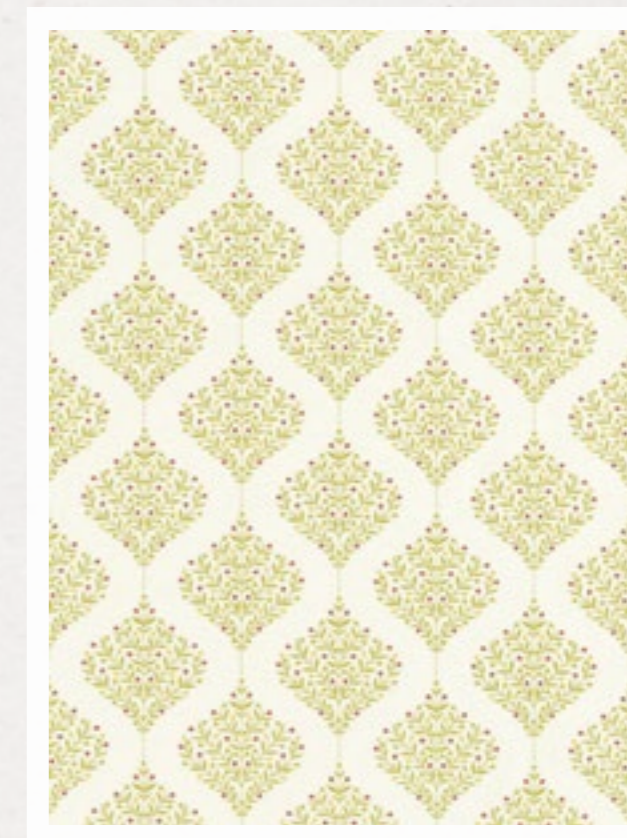


ORCHARD TREE EMBROIDERY

This well-spaced berry tree design showcases a raised circular stitch technique and pops of berry colour. An excellent co-ordinate with a contemporary country feel, this 100% cotton embroidery is ideal for drapes and blinds.



ORCHARD TREE DNTF237184



ORCHARD TREE DNTF237185



ORCHARD TREE DNTF237186

▶ [CLICK ON THE PRODUCT IMAGE TO VIEW ON WEBSITE & ORDER SAMPLES](#)



BY APPOINTMENT TO HM QUEEN ELIZABETH II
SUPPLIERS OF WALLPAPERS, PAINTS & FABRICS
ARTHUR SANDERSON AND SONS ENGLAND

Sanderson

COUNTRY HOUSE

DESIGNED IN
COLLABORATION WITH



National
Trust

THE WALLED GARDEN, COLBY WOODLAND GARDEN, PEMBROKESHIRE

Garden image: © National Trust Images/James Dobson



COUNTRY HOUSE

Create a welcoming country feel by taking inspiration from the treasured wallpapers, delightful formal gardens and stunning embroideries found within the historic buildings in the National Trust's care.

Bringing to life the glory of a country house garden, sumptuous, rich velvets capture the spectacular colours of generous peonies, delicate butterflies and friendly bees.





COLOURFUL
PRINTS
AND
INTRICATE
STITCHING



Garden image: @ National Trust Images/Chris Lacey

ABOVE: BLIND Lophura 226753 CUSHION Tilia Lime 226751 All other complementary fabrics and paints are from the Sanderson range.

BUMBLING
BEES
AND
GLORIOUS
BLOOMS



ABOVE: Summer Peony 226747. All other complementary fabrics, wallpapers and paints are from the Sanderson range.

NATURAL INSPIRATION

STYLING TIPS



country
welcome



Play with contrasting textures, use trimmings or contrast piping on curtains, upholstery and cushions to add that finishing touch



PAINT INSPIRATION

[CLICK TO VIEW ON WEBSITE](#)



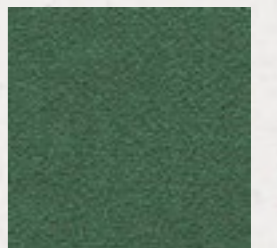
VINEYARD



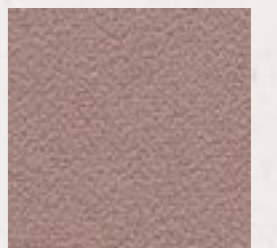
AMSTERDAM GREEN

WEAVE INSPIRATION

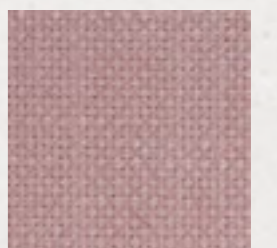
[CLICK TO VIEW ON WEBSITE](#)



DORTON



DORTON



TUSCANY II





SUMMER PEONY

Abundant blooms feature on this lovely cottage garden scene of beautiful peonies, delicate butterflies and friendly bees. Bold and richly coloured, the Vineyard/Rose and Newby Green colourways are available in a sumptuous velvet.



SUMMER PEONY DNTF226747



SUMMER PEONY DNTF226748



SUMMER PEONY DNTF226749

▶ [CLICK ON THE PRODUCT IMAGE TO VIEW ON WEBSITE & ORDER SAMPLES](#)



TILIA LIME

Painted in a trompe-l'oeil style to imitate wood carving, Tilia Lime is a classic scrolling leaf and floral pattern which takes its inspiration from the many wood carvings found within the National Trust's Petworth House.



TILIA LIME DNTF226750



TILIA LIME DNTF226751



TILIA LIME DNTF226752

▶ [CLICK ON THE PRODUCT IMAGE TO VIEW ON WEBSITE & ORDER SAMPLES](#)



LOPHURA

Taken from an archive document and with its classic chinoiserie appeal, block printed pheasants, flowers and leaves adorn this stylised Sanderson fabric.



LOPHURA DNTF226753



LOPHURA DNTF226754



LOPHURA DNTF226755

▶ [CLICK ON THE PRODUCT IMAGE TO VIEW ON WEBSITE & ORDER SAMPLES](#)



PASSION VINE

With a glorious country house style, intricate stitching showcases the detail of Passion Vine's original hand drawn design. This stunning embroidery features a cotton/linen base and viscose yarns give a soft iridescence to this classic floral trail.



PASSION VINE DNTF237195

▶ [CLICK ON THE PRODUCT IMAGE TO VIEW ON WEBSITE & ORDER SAMPLES](#)



BY APPOINTMENT TO HM QUEEN ELIZABETH II
SUPPLIERS OF WALLPAPERS, PRINTS & FABRICS
ARTHUR SANDERSON AND SONS ENGLAND

Sanderson



DESIGNED IN
COLLABORATION WITH

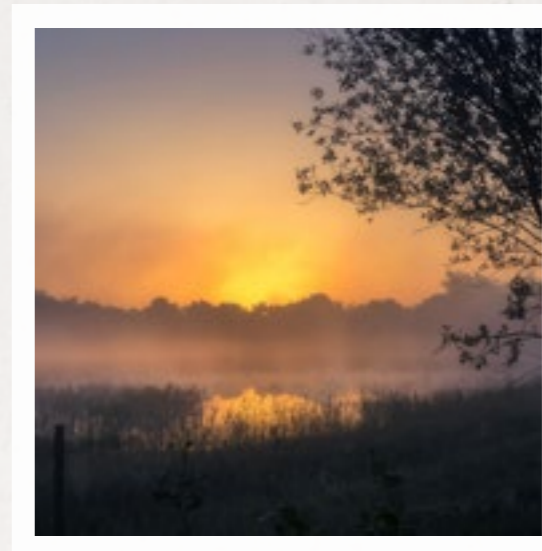


National
Trust

WICKEN FEN NATURE RESERVE, CAMBRIDGESHIRE

Garden image: © National Trust Images/Joe Cornish

THE FENS



THE FENS

The weaving grasses and wild flowers of this fresh, uplifting scheme represent the tranquillity of Cambridgeshire's Wicken Fen, the National Trust's first and oldest nature reserve.

Natural greens, fresh yellows and pops of kingfisher blue reflect the colours of this picturesque landscape, accented by textural looks and the painterly detail of delicate bees and emperor dragonflies.



LEFT: CURTAIN Kingfisher and Iris 226731
CUSHIONS Meadow Fields 237197, Violet Grasses 237198.



DAZZLING
KINGFISHERS
AND
ELEGANT
IRIS STEMS



ABOVE: CURTAIN Violet Grasses 237198 CUSHION Kingfisher and Iris 226731

NATURAL INSPIRATION

STYLING TIPS



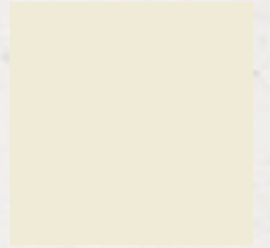
Pick out a tone within the main fabric to add a contrast leading edge to your curtains. If you want to elevate the feel, why not try a Dorton Velvet?



nature's highlights

PAINT INSPIRATION

[CLICK TO VIEW ON WEBSITE](#)



MATTERHORN

WALLPAPER INSPIRATION

[CLICK TO VIEW ON WEBSITE](#)



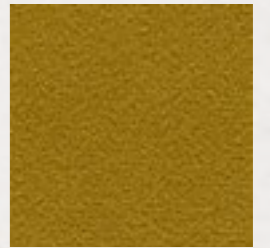
MATTERHORN

WEAVE INSPIRATION

[CLICK TO VIEW ON WEBSITE](#)



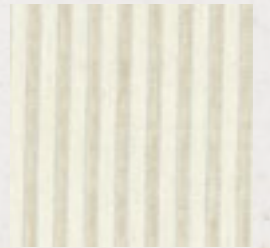
DORTON



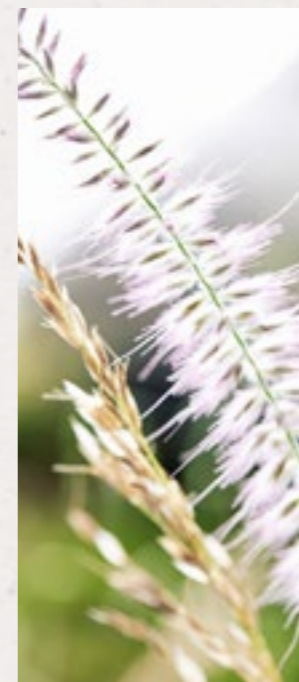
DORTON



MELFORD



MELFORD STRIPE



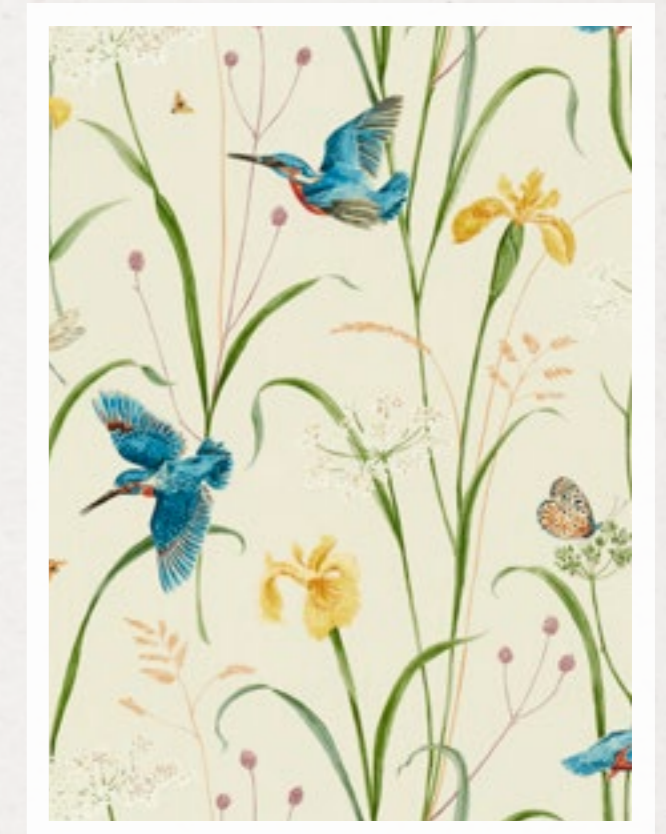


KINGFISHER & IRIS

This beautifully accurate interpretation of a marshland scene sees kingfishers swooping between tall grasses and iris stems, with bees, butterflies and emperor dragonflies. Printed on either satin or cotton cloth and hand drawn in watercolour.



KINGFISHER & IRIS DNTF237131



KINGFISHER & IRIS DNTF237132



KINGFISHER & IRIS DNTF237133

▶ [CLICK ON THE PRODUCT IMAGE TO VIEW ON WEBSITE & ORDER SAMPLES](#)



FELIX

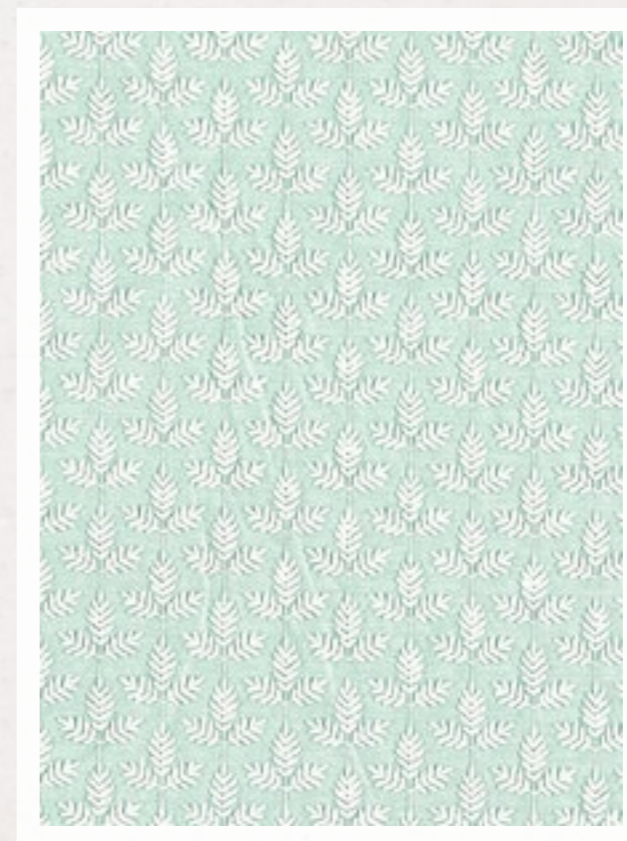
Felix is a wonderfully easy to use small-scale co-ordinate in three country colourways. Perfect for blinds and drapes the fern leaf from which this design takes its name, is embroidered to enhance the appearance of the simple pattern.



FELIX DNTF237192



FELIX DNTF237193



FELIX DNTF237194

▶ [CLICK ON THE PRODUCT IMAGE TO VIEW ON WEBSITE & ORDER SAMPLES](#)



MEADOW FIELDS

A summery take on a flower filled meadow, this dual-purpose weave is a wonderfully versatile addition to any home. Add a pop of colour with the High Sea colourway or co-ordinate Linen with contrasting tones.



MEADOW FIELDS DNTF237196



MEADOW FIELDS DNTF237197

▶ [CLICK ON THE PRODUCT IMAGE TO VIEW ON WEBSITE & ORDER SAMPLES](#)



VIOLET GRASSES

Taking its inspiration from Wicken Fen, this oasis of grasses and flowers captures the beauty of the English countryside. A painterly weft creates a textural look across this woven jacquard, akin to ripples of water.



VIOLET GRASSES DNTF237198



VIOLET GRASSES DNTF237199

▶ [CLICK ON THE PRODUCT IMAGE TO VIEW ON WEBSITE & ORDER SAMPLES](#)



BY APPOINTMENT TO HM QUEEN ELIZABETH II
SUPPLIERS OF WALLPAPERS, PAINTS & FABRICS
ARTHUR SANDERSON AND SONS ENGLAND

Sanderson

UNDER THE GREENWOOD TREE

DESIGNED IN
COLLABORATION WITH



National
Trust

HARDY'S COTTAGE, DORSET

Garden image: © National Trust Images/Robert Morris



UNDER THE GREENWOOD TREE

The colourful flowers and prolific pollinators found amongst the National Trust's cottage gardens, specifically that of Thomas Hardy's Dorset home, have inspired this charming theme.

Stylised fruits and berries in feminine, pastel colours are teamed with timeless hand painted floral trails, to bring a sophisticated air to elegant interiors.





DELICATE
PASTELS
AND
DETAILED
FLOWERS



ABOVE: CURTAIN Poet's Rose 226736 CUSHION Catherinae 237189.
All other complementary fabrics, wallpapers and paints are from the Sanderson range.

CHEERFUL BIRDS AND PLUMP BERRIES

Create a wonderful country feel with this fresh contemporary design that is produced using eco-inks and printed on sustainable cotton.



Garden image: @ National Trust Images/Chris Lacey



ABOVE: CURTAIN Birds and Berries 226728 CUSHION Wild Berries - 226745.
All other complementary fabrics, wallpapers and paints are from the Sanderson range.

NATURAL INSPIRATION

STYLING TIPS



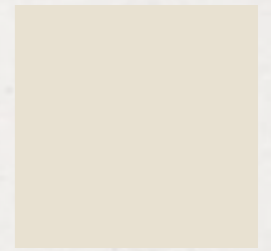
When creating a beautiful table setting create levels by adding layers of different textures and height. Use the tones in the interior setting and add one highlight such as this bright yellow to make the room sing!

textural layers



PAINT INSPIRATION

[CLICK TO VIEW ON WEBSITE](#)



BIRCH WHITE



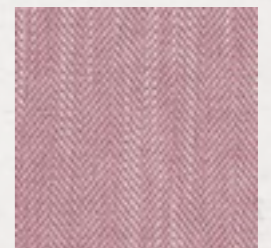
SAGE GREY



CANOPY GREEN

WEAVE INSPIRATION

[CLICK TO VIEW ON WEBSITE](#)



MELFORD



MELFORD



TUSCANY II

COMPLEMENTARY

PAINT

TONES

floral indulgence





BIRDS & BERRIES

Walk through the woods and forage for berries and fruits with this delightful scene of stylised birds, fruits and berries in fresh contemporary colourways. Printed using Ecofast inks on a sustainably sourced cotton.



BIRDS & BERRIES DNTF226728

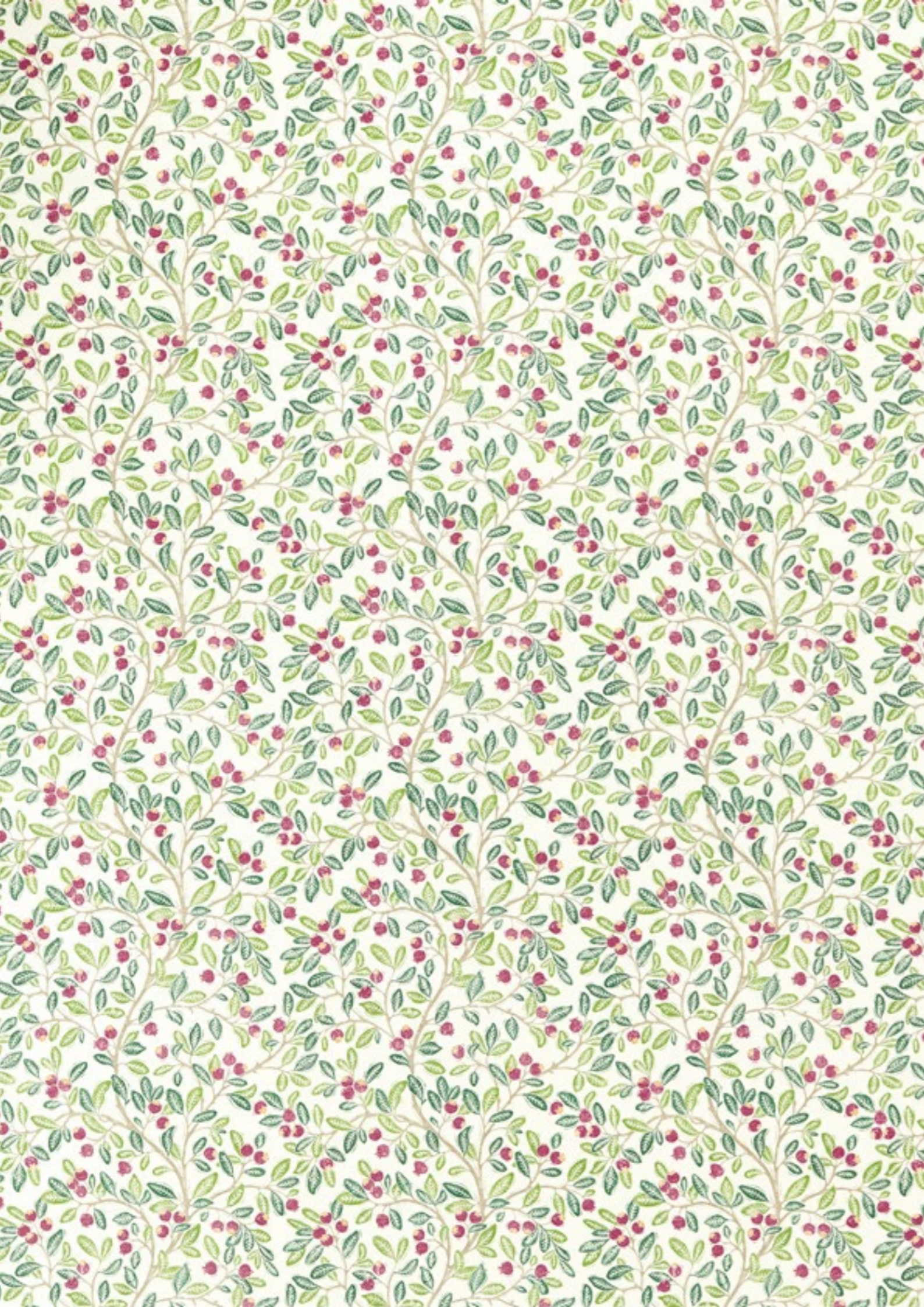


BIRDS & BERRIES DNTF226729



BIRDS & BERRIES DNTF226730

▶ [CLICK ON THE PRODUCT IMAGE TO VIEW ON WEBSITE & ORDER SAMPLES](#)



WILD BERRIES

Meandering berries climb the walls to create this stylistic, small scale trail. Hand painted and lino printed using Ecofast inks on a sustainably sourced cotton, Wild Berries is a co-ordinate that works wonderfully with Birds and Berries.



WILD BERRIES DNTF226743



WILD BERRIES DNTF226744



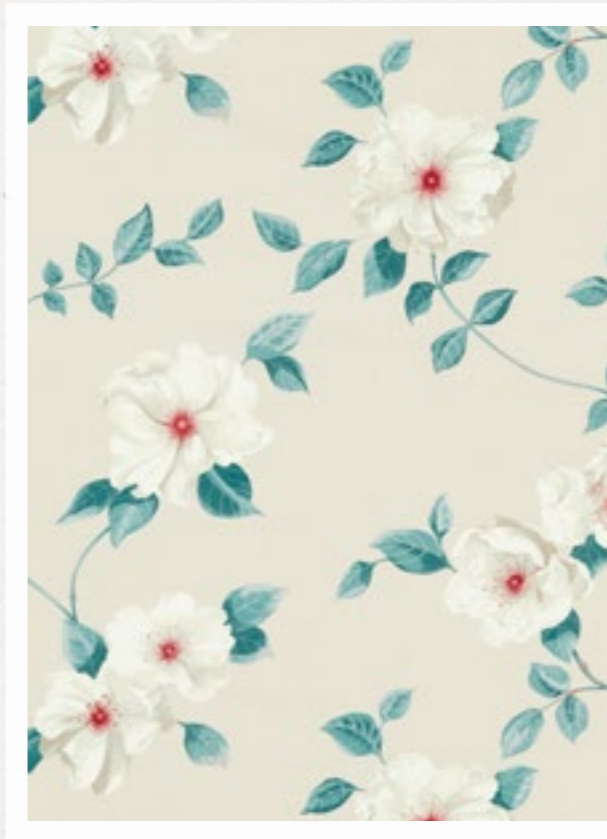
WILD BERRIES DNTF226745

▶ [CLICK ON THE PRODUCT IMAGE TO VIEW ON WEBSITE & ORDER SAMPLES](#)



POET'S ROSE

A sophisticated print in feminine pastel colours, this trailing dog rose is hand painted to create a timeless, cottage garden feel. Dog rose is a particular favourite with bees and insects alike, creating an enticing and welcoming floral habitat.



POET'S ROSE DNTF226736



POET'S ROSE DNTF226737



WILD BERRIES DNTF226738

▶ [CLICK ON THE PRODUCT IMAGE TO VIEW ON WEBSITE & ORDER SAMPLES](#)



CATHERINAE

This beautifully detailed design shows the Pincushion Protea in all its glory. Embroidered in a viscose thread on a cotton ground, a delicate shimmer highlights the colours and textures of the fabric's flowers and leaves.



CATHERINAE DNTF237187



CATHERINAE DNTF237188



CATHERINAE DNTF237189

▶ [CLICK ON THE PRODUCT IMAGE TO VIEW ON WEBSITE & ORDER SAMPLES](#)



HONEY FLOWERS

With a contemporary painterly appearance, bees are drawn to the flowers of the entwined honeysuckle and fuchsia stems that flow across this natural looking design, printed on satin to give a crisp, clean look.



HONEY FLOWERS DNTF226739



HONEY FLOWERS DNTF226740

▶ [CLICK ON THE PRODUCT IMAGE TO VIEW ON WEBSITE & ORDER SAMPLES](#)



BY APPOINTMENT TO HER MAJESTY THE QUEEN
SUPPLIERS OF WALLPAPER, PAINTS & FABRICS
ARTHUR SANDERSON AND SONS ENGLAND

Sanderson

THE LOOKOUT

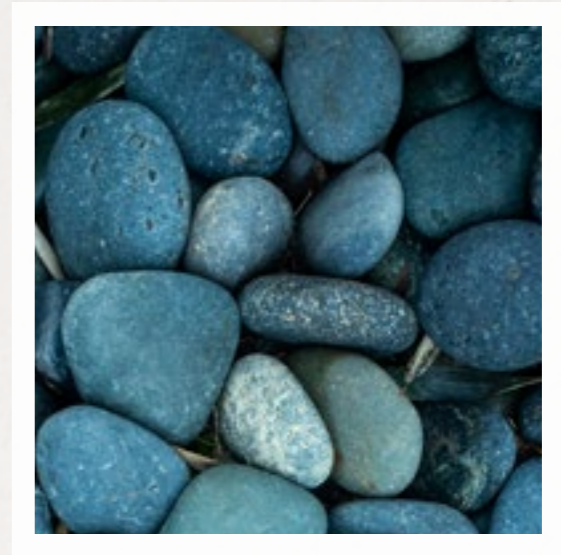
DESIGNED IN
COLLABORATION WITH



National
Trust

LUNDY ISLAND, DEVON

Garden image: © National Trust Images/Nick Upton



THE LOOKOUT

We're celebrating the 780 miles of coastline and precious wildlife within the National Trust's care by capturing a sophisticated coastal look with darting seabirds and rolling waves.

Abstract patterns and lino cut looks introduce a versatility to this theme with beautiful Indigo, Navy and Teal colourways representative of a seaside panorama that's highlighted with the Raspberry tones of spring flowers.





ROLLING
WAVES
AND
SWOOPING
SWIFTS



NATURAL INSPIRATION

STYLING TIPS



coastal
retreat



Create a perfect retreat by keeping your colour palette tonal. To ensure the room feels restful whilst using a bold print, pair with a small scale wallpaper design or paint.

PAINT INSPIRATION

[CLICK TO VIEW ON WEBSITE](#)



ELDER BARK

WALLPAPER INSPIRATION

[CLICK TO VIEW ON WEBSITE](#)



ELDER BARK

WEAVE INSPIRATION

[CLICK TO VIEW ON WEBSITE](#)



MELFORD



MELFORD STRIPE



RUE LINEN



RUE LINEN



SWALLOWS AT SEA

With its hand cut lino appearance and art-deco feel, swooping swallows play amongst rolling waves in this stylised Sanderson print.



SWALLOWS AT SEA DNTF226741



SWALLOWS AT SEA DNTF226742

▶ [CLICK ON THE PRODUCT IMAGE TO VIEW ON WEBSITE & ORDER SAMPLES](#)



POET'S GARDEN

This crisp, abstract pattern captures the tones of spring flowers and rippling waters. Spontaneous and colourful, this contemporary ikat watercolour introduces a versatility that can be adapted to any scheme.



POET'S GARDEN DNTF226756



POET'S GARDEN DNTF226757

▶ [CLICK ON THE PRODUCT IMAGE TO VIEW ON WEBSITE & ORDER SAMPLES](#)



160

— YEARS OF —

Sanderson

INSPIRED BY NATURE SINCE 1860

USEFUL LINKS

COMPLEMENTARY WALLPAPER
[LITTLEMORE WALLPAPERS](#)

COMPLEMENTARY WEAVES
[MELFORD WEAVES](#)

COMPLEMENTARY LINENS
[RUE LINEN](#)

COMPLEMENTARY PAINTS
[SANDERSON PAINT](#)

DESIGNED IN
COLLABORATION WITH



nationaltrust.org.uk

Produced by Sanderson under licence from
The National Trust (Enterprises) Limited (a subsidiary of
The National Trust for Places of Historic Interest or Natural
Beauty, England & Wales registered charity number 205846).

Through sales generated from the National Trust
'A celebration of the National Trust by Sanderson', a minimum
of £50,000 will be given to the National Trust to help look after
nature, beauty and history for everyone, forever.