

## CUSTOMER INFORMATION

Customer name \_\_\_\_\_ Date \_\_\_\_\_

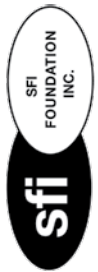
Shipping Address

Phone # \_\_\_\_\_

Email \_\_\_\_\_

**SUIT TYPE**     ONE PIECE     TWO PIECE     JACKET

## SUIT OPTIONS



**STANDARD 1 LAYER SFI 3.2A/1 \$549.95**  
**JACKET PRICE \$350.95**

295 \*g/m<sup>2</sup> FR Cotton / \*TPP 10

**STANDARD 2 LAYER SFI 3.2A/5 \$1199.95**  
**JACKET PRICE \$650.95**

250 \*g/m<sup>2</sup> Meta Para Aramid Outer Layer  
180 \*g/m<sup>2</sup> 100% Nomex Inner Layer  
430 \*g/m<sup>2</sup> Total Suit Weight / \*TPP 22.6

**PREMIUM 1 LAYER SFI 3.2A/1 \$649.95**  
**JACKET PRICE \$450.95**

This material is only available in Black, Grey and White  
240 \*g/m<sup>2</sup> FR Breathable Cotton / \*TPP 8.26

**PREMIUM 2 LAYER SFI 3.2A/5 \$1399.95**  
**JACKET PRICE \$750.95**

150 \*g/m<sup>2</sup> 100% Nomex Outer Layer  
180 \*g/m<sup>2</sup> 100% Nomex Inner Layer  
330 \*g/m<sup>2</sup> Total Suit Weight / \*TPP 21.6

**SAFETY X INNER LINER (+\$100) ADDS +70 GSM IN WEIGHT / ADDS TPP +7.5 (Upgrade on 2 layer suits only)**

**\*TPP Rating** - Divide this number by two to determine the number of seconds before a second degree burn occurs

**\*g/m<sup>2</sup>** Grams per square meter refers to the weight of the suit

**BODY TYPE**     Male     Female     Child

**FIT TYPE**     Slim     Regular     Loose

**NOMEX INNER LINING COLOR (If Applicable)**

Black     White     Blue     Red

**NOMEX INNER LINING FLO COLOR (+\$100.00)**

Flo Blue     Flo Green     Flo Yellow     Flo Orange     Flo Red     Flo Pink

**STRETCH PANELS (Arm Gusset, Back and Crotch panels are included)**     Side Panels (+\$50)

**ADDITIONAL OPTIONS**     Arm Restraint D Rings (+\$50)     Raceceiver Pocket (+\$25)     Passport Pocket (+\$25)

## Standard Suit Options Included In Price

### SFI 1 Auto Racing Suit

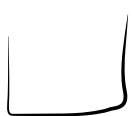
Unlimited Embroidery  
Custom Sizing  
360 Degree Arm Gussets  
Lower Back Stretch Panel  
Crotch Stretch Panels  
Choice of Quilting Stitch Color  
Choice of Leg Design  
Standard Cotton FR Proban Outer Shell

### SFI 5 Auto Racing Suit

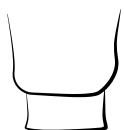
Unlimited Embroidery  
Custom Sizing  
360 Degree Arm Gussets  
Lower Back Stretch Panel  
Crotch Stretch Panels  
Premium Knit Nomex Inner Lining  
Choice of Quilting Stitch Color  
Choice of Leg Design (Boot Cut or Cuffed)  
Standard Meta Para - Aramid Nomex Outer Shell

## Legging Styles

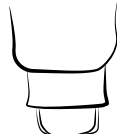
## Collar Styles



Boot Cut



Euro Cut



Euro Cut w/ Elastic



Large w/ Velcro



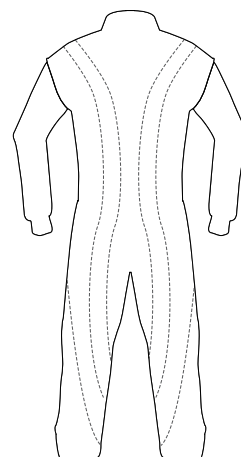
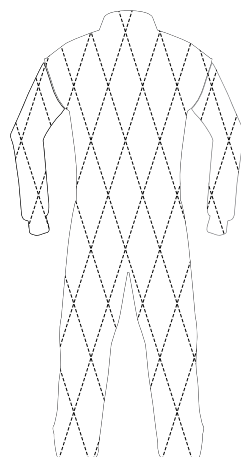
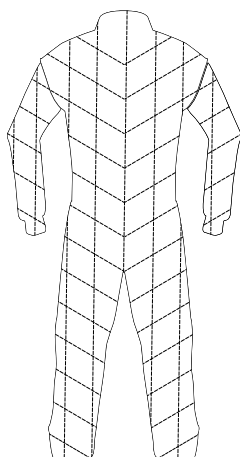
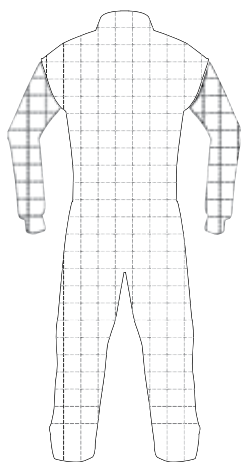
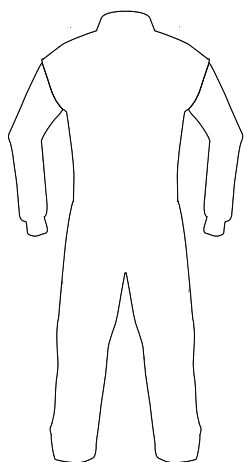
Tapered w/ Velcro



Tapered V

## Stitching Styles

Stitching color will match the main color of the suit unless otherwise specified.



No Stitching

Box Stitching

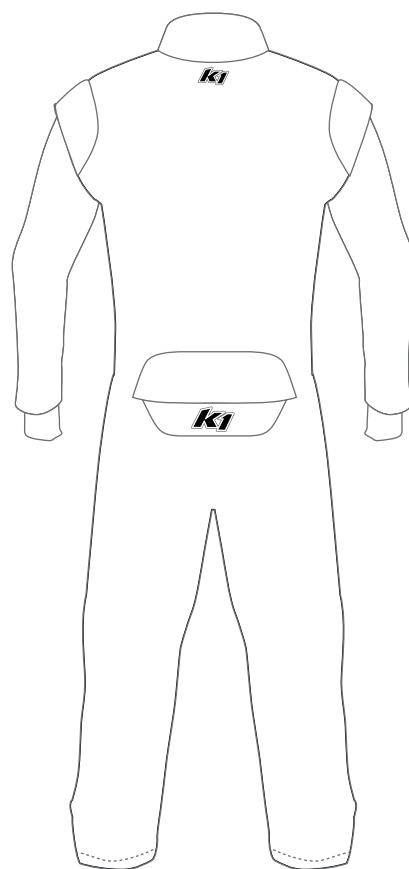
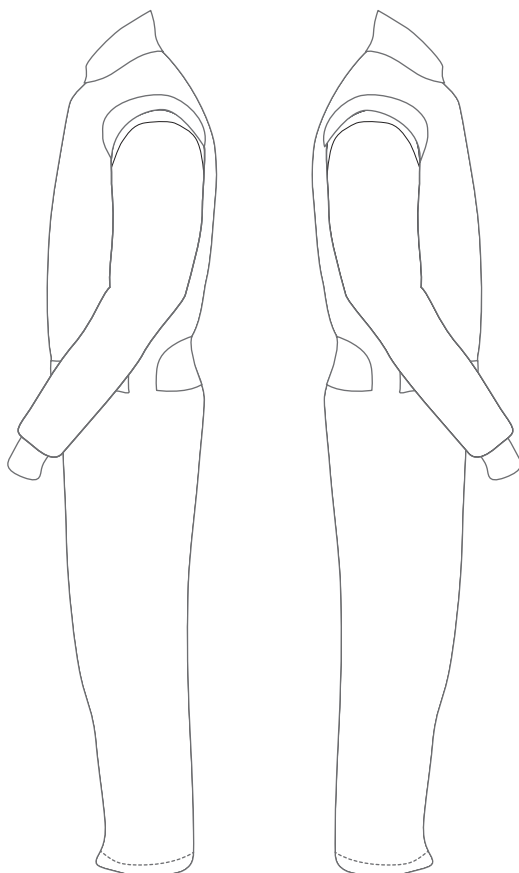
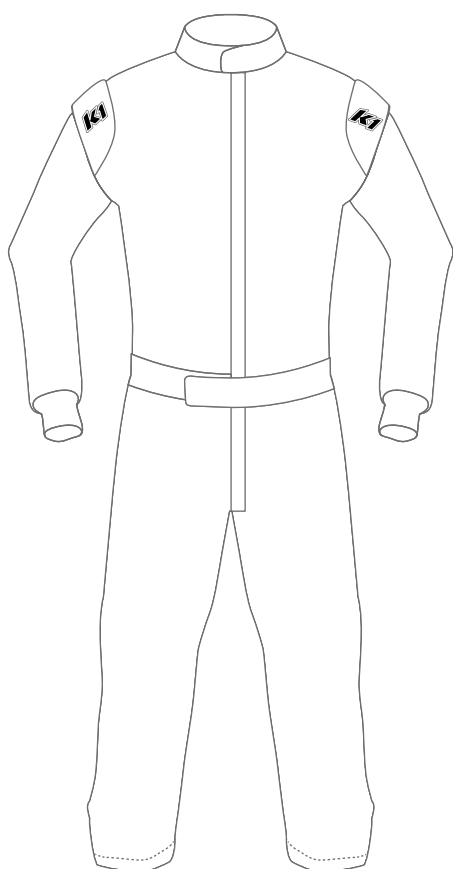
Diagonal Stitching

Diamond Stitching

Custom Stitching

*(Single layer suit only)*

## Logo Placement

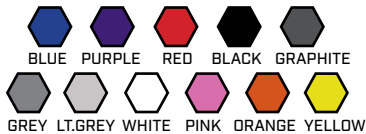


Write the name of the logo on the line and write the corresponding number inside a drawn box the size you would like the logo to be. If there are more than 6 per side, write the name of the logo on the drawing.

FRONT	LEFT SIDE	RIGHT SIDE	BACK
1. _____	1. _____	1. _____	1. _____
2. _____	2. _____	2. _____	2. _____
3. _____	3. _____	3. _____	3. _____
4. _____	4. _____	4. _____	4. _____
5. _____	5. _____	5. _____	5. _____
6. _____	6. _____	6. _____	6. _____

# Suit Design Options

## Standard 1 layer suit colors



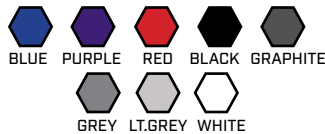
## Premium 1 layer suit colors

Breathable fr cotton only available in:



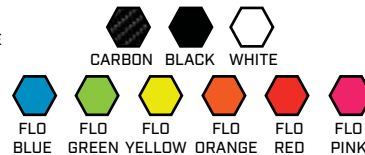
Standard 1 layer suit colors may be used as accent color options but it will be the heavier material

## Standard 2 layer suit colors



## Premium 2 layer suit colors

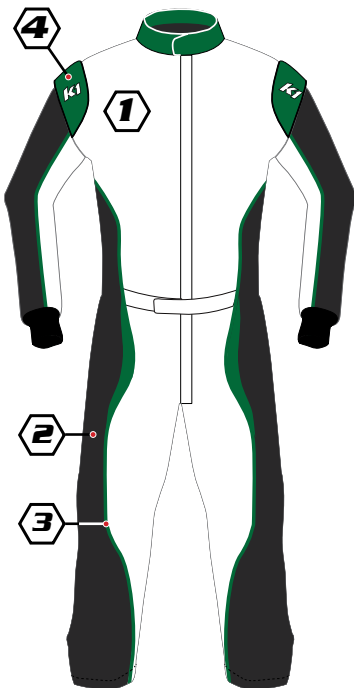
All standard colors plus:



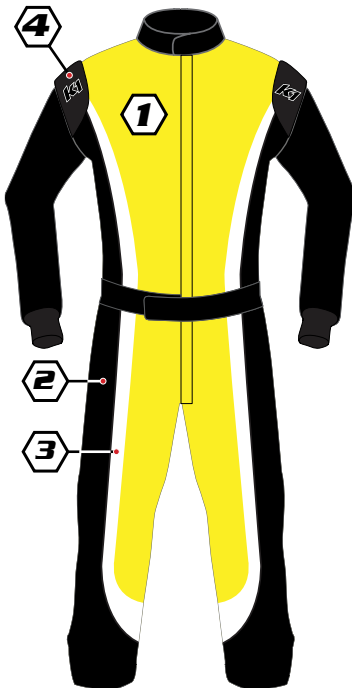
Colors shown on suits are for reference only and are to be chosen in the space below



Design #1



Design #2



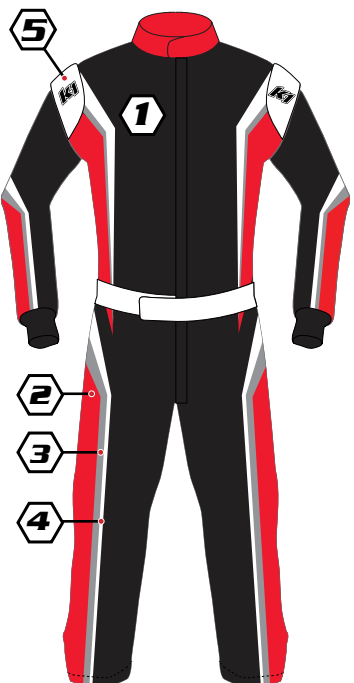
Design #3



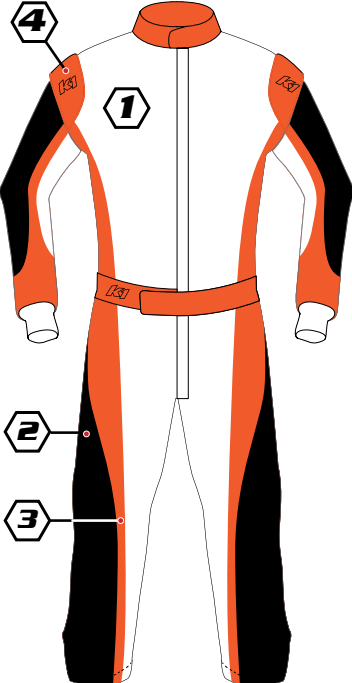
Design #4



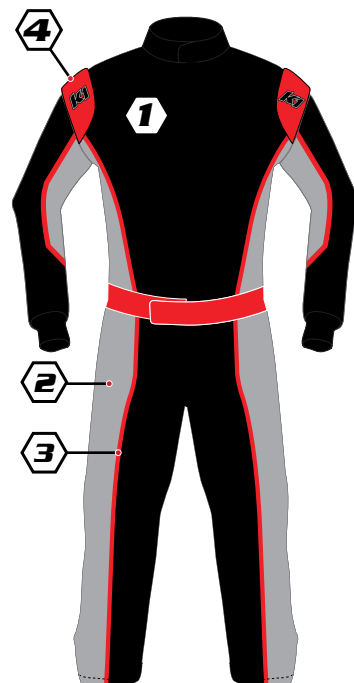
Design #5



Design #6



Design #7



Design #8

### COLORS

Color 1: \_\_\_\_\_  
 Color 2: \_\_\_\_\_  
 Color 3: \_\_\_\_\_  
 Color 4: \_\_\_\_\_  
 Color 5: \_\_\_\_\_

### PIPING COLOR

Collar: \_\_\_\_\_  
 Epaulets: \_\_\_\_\_  
 Belt: \_\_\_\_\_

### ADDITIONAL INFO

Name on belt \_\_\_\_\_  
 Flag on belt \_\_\_\_\_  
 Wrist cuff color \_\_\_\_\_  
 Collar color \_\_\_\_\_

