

CUSTOMER INFORMATION

Customer name _____ Date _____

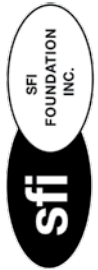
Shipping Address

Phone # _____

Email _____

SUIT TYPE ONE PIECE TWO PIECE JACKET

SUIT OPTIONS



STANDARD 1 LAYER SFI 3.2A/1 \$499.95
JACKET PRICE \$350.95
 295 *g/m² FR Cotton / *TPP 10

PREMIUM 1 LAYER SFI 3.2A/1 \$599.95
JACKET PRICE \$450.95
 240 *g/m² FR Breathable Cotton / *TPP 8.26

STANDARD 2 LAYER SFI 3.2A/5 \$1099.95
JACKET PRICE \$550.95
 250 *g/m² Meta Para Aramid Outer Layer
 180 *g/m² 100% Nomex Inner Layer
 430 *g/m² Total Suit Weight / *TPP 22.6

PREMIUM 2 LAYER SFI 3.2A/5 \$1199.95
JACKET PRICE \$650.95
 150 *g/m² 100% Nomex Outer Layer
 180 *g/m² 100% Nomex Inner Layer
 330 *g/m² Total Suit Weight / *TPP 21.6

SAFETY X INNER LINER (+\$100) ADDS +70 GSM IN WEIGHT / ADDS TPP +7.5 (Upgrade on 2 layer suits only)

**TPP Rating- Divide this number by two to determine the number of seconds before a second degree burn occurs* **g/m² Grams per square meter refers to the weight of the suit*

BODY TYPE Male Female Child

FIT TYPE Slim Regular Loose

NOMEX INNER LINING COLOR (If Applicable) Black White Blue Red

NOMEX INNER LINING FLO COLOR (+\$100.00) Flo Blue Flo Green Flo Yellow Flo Orange Flo Red Flo Pink

STRETCH PANELS (Arm Gusset, Back and Crotch panels are included) Side Panels (+\$50)

ADDITIONAL OPTIONS Arm Restraint D Rings (+\$50) Raceceiver Pocket (+\$25) Passport Pocket (+\$25)

Standard Suit Options Included In Price

SFI 1 Auto Racing Suit

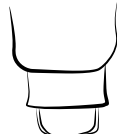
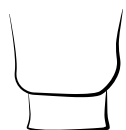
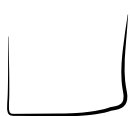
Unlimited Embroidery
 Custom Sizing
 360 Degree Arm Gussets
 Lower Back Stretch Panel
 Crotch Stretch Panels
 Choice of Quilting Stitch Color
 Choice of Leg Design
 Standard Cotton FR Proban Outer Shell

SFI 5 Auto Racing Suit

Unlimited Embroidery
 Custom Sizing
 360 Degree Arm Gussets
 Lower Back Stretch Panel
 Crotch Stretch Panels
 Premium Knit Nomex Inner Lining
 Choice of Quilting Stitch Color
 Choice of Leg Design (Boot Cut or Cuffed)
 Standard Meta Para - Aramid Nomex Outer Shell

Legging Styles

Collar Styles



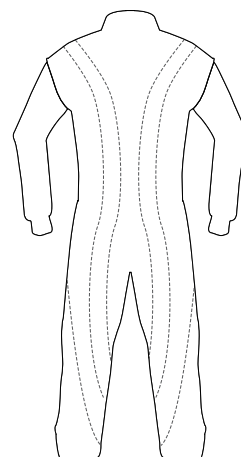
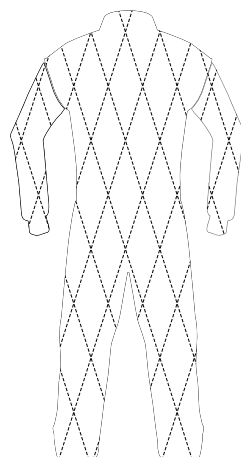
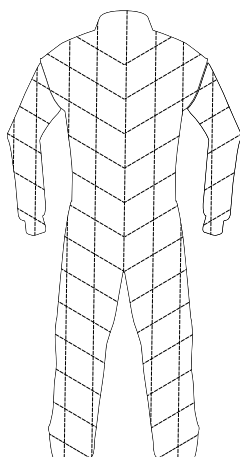
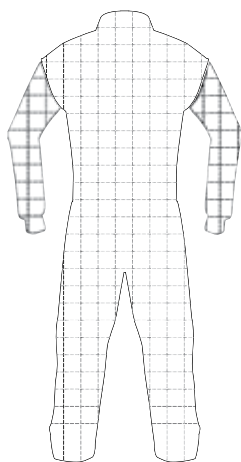
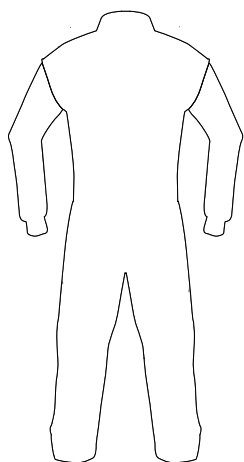
Boot Cut Euro Cut Euro Cut w/ Elastic

Large w/ Velcro Tapered w/ Velcro

Tapered V

Stitching Styles

Stitching color will match the main color of the suit unless otherwise specified.



No Stitching

Box Stitching

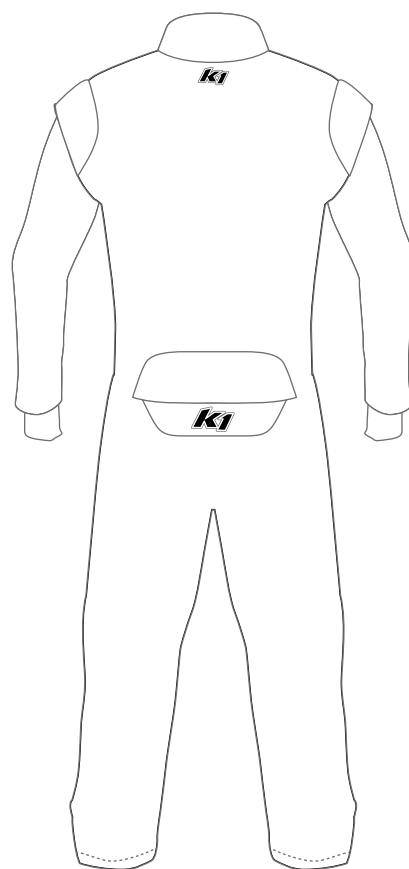
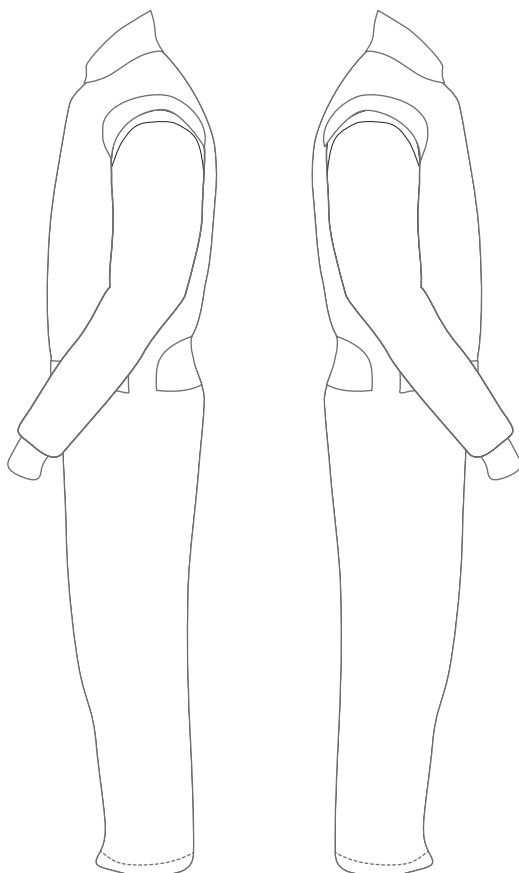
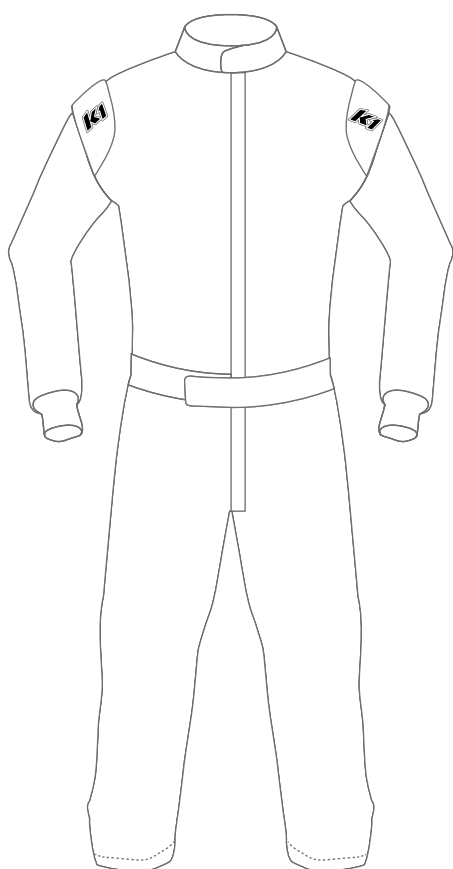
Diagonal Stitching

Diamond Stitching

Custom Stitching

(Single layer suit only)

Logo Placement

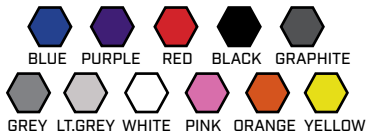


Write the name of the logo on the line and write the corresponding number inside a drawn box the size you would like the logo to be. If there are more than 6 per side, write the name of the logo on the drawing.

FRONT	LEFT SIDE	RIGHT SIDE	BACK
1. _____	1. _____	1. _____	1. _____
2. _____	2. _____	2. _____	2. _____
3. _____	3. _____	3. _____	3. _____
4. _____	4. _____	4. _____	4. _____
5. _____	5. _____	5. _____	5. _____
6. _____	6. _____	6. _____	6. _____

Suit Design Options

Standard 1 layer suit colors



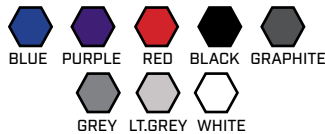
Premium 1 layer suit colors

Breathable fr cotton only available in:



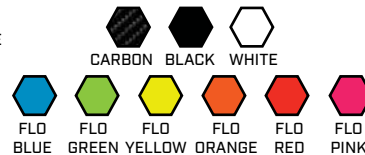
Standard 1 layer suit colors may be used as accent color options but it will be the heavier material

Standard 2 layer suit colors



Premium 2 layer suit colors

All standard colors plus:



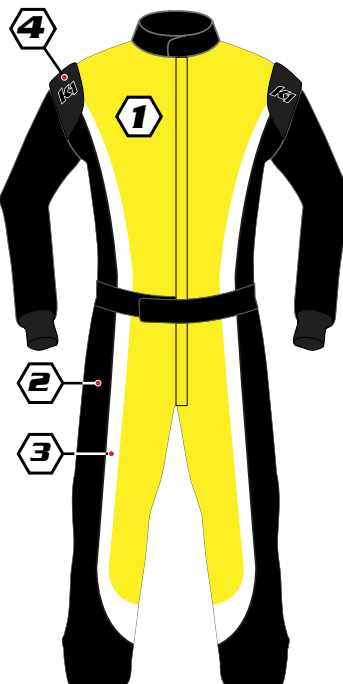
Colors shown on suits are for reference only and are to be chosen in the space below



Design #1



Design #2



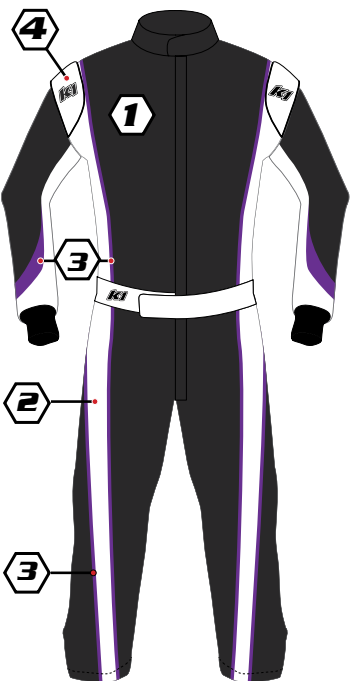
Design #3



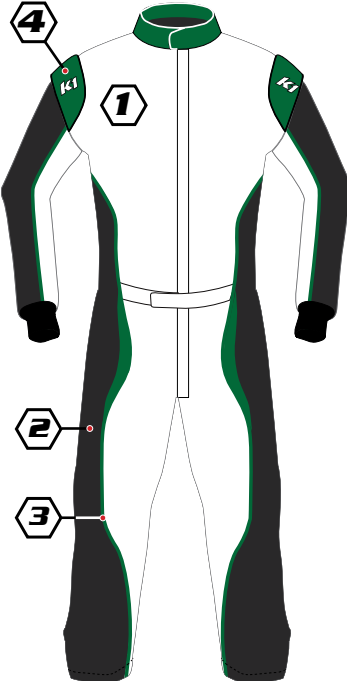
Design #4



Design #5



Design #6



Design #7



Design #8

COLORS

Color 1: _____
 Color 2: _____
 Color 3: _____
 Color 4: _____
 Color 5: _____

PIPING COLOR

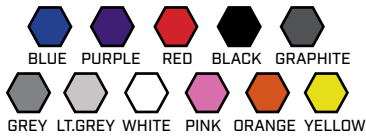
Collar: _____
 Epaulets: _____
 Belt: _____

ADDITIONAL INFO

Name on belt _____
 Flag on belt _____
 Wrist cuff color _____
 Collar color _____

Suit Design Options

Standard 1 layer suit colors



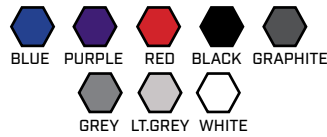
Premium 1 layer suit colors

Breathable fr cotton only available in:



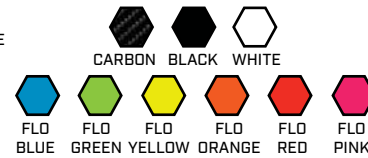
Standard 1 layer suit colors may be used as accent color options but it will be the heavier material

Standard 2 layer suit colors

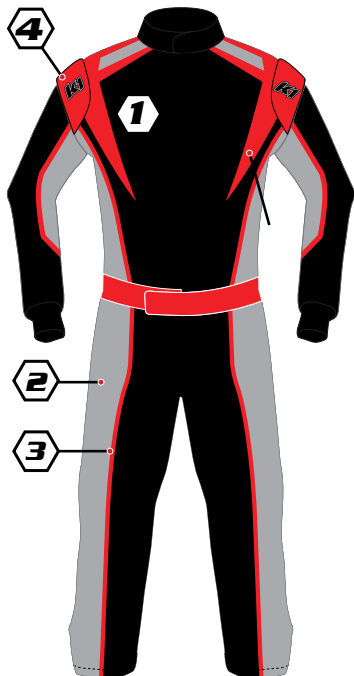


Premium 2 layer suit colors

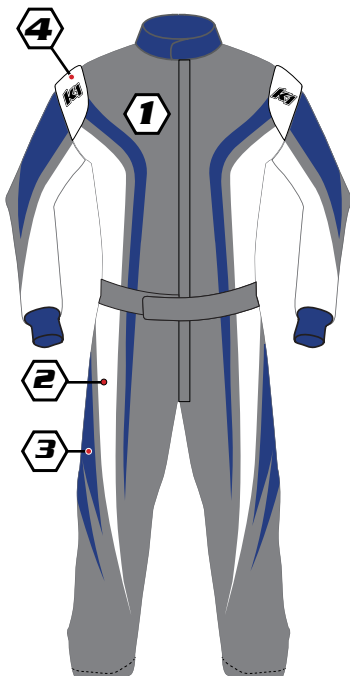
All standard colors plus:



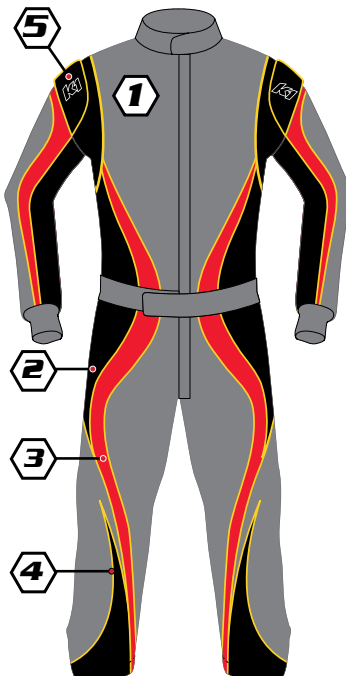
Colors shown on suits are for reference only and are to be chosen in the space below



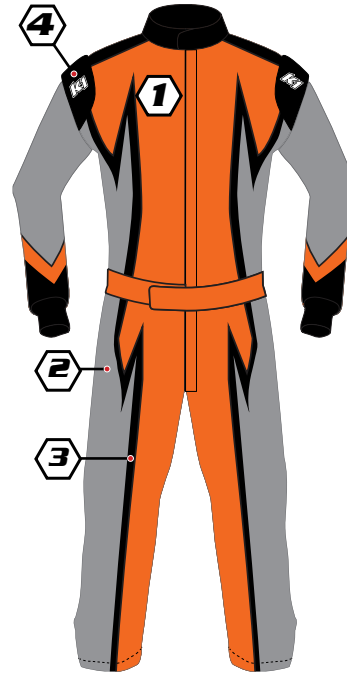
Design #9



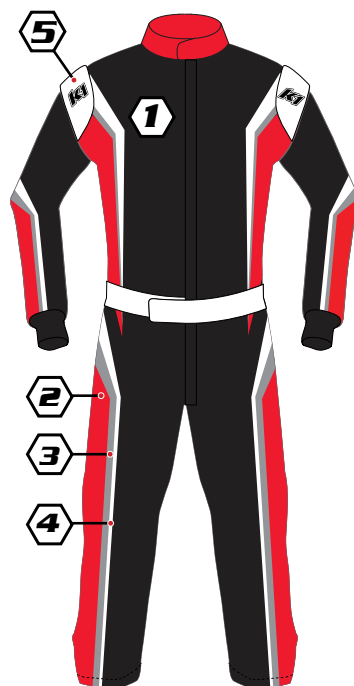
Design #10



Design #11



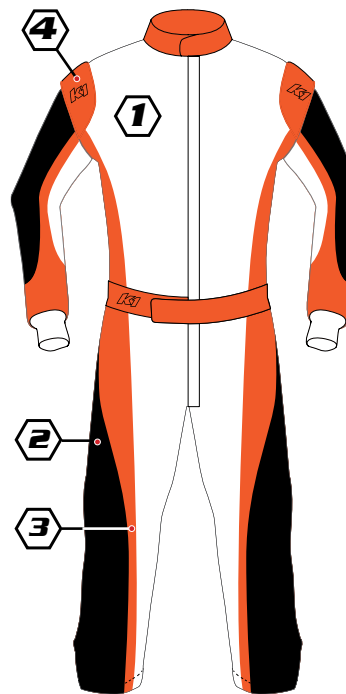
Design #12



Design #13



Design #14



Design #15



Design #16

COLORS

Color 1: _____
 Color 2: _____
 Color 3: _____
 Color 4: _____
 Color 5: _____

PIPING COLOR

Collar: _____
 Epaulets: _____
 Belt: _____

ADDITIONAL INFO

Name on belt _____
 Flag on belt _____
 Wrist cuff color _____
 Collar color _____